



US006341287B1

(12) **United States Patent**
Sziklai et al.

(10) **Patent No.:** **US 6,341,287 B1**
(45) **Date of Patent:** **Jan. 22, 2002**

(54) **INTEGRATED CHANGE MANAGEMENT UNIT**

(75) Inventors: **Anthony T. Sziklai**, Half Moon Bay; **Ashish K. Verma**, Foster City; **Judith E. Popowski**, Half Moon Bay; **Richard Frankland**, San Jose; **Christopher M. Mitchell**, El Granada; **Joseph D. Ferguson**, Santa Clara; **Douglas H. Sturgeon**, San Mateo, all of CA (US)

(73) Assignee: **Alternative Systems, Inc.**, Half Moon Bay, CA (US)

(*) Notice: Subject to any disclaimer, the term of this patent is extended or adjusted under 35 U.S.C. 154(b) by 0 days.

(21) Appl. No.: **09/215,898**

(22) Filed: **Dec. 18, 1998**

(51) **Int. Cl.**⁷ **G06F 17/00**

(52) **U.S. Cl.** **707/102; 705/8**

(58) **Field of Search** 707/102, 200, 707/202, 203, 205; 705/7, 8, 9, 10, 28, 29, 11; 588/1, 16; 700/266

(56) **References Cited**

U.S. PATENT DOCUMENTS

4,803,039 A	*	2/1989	Impink, Jr. et al.	376/216
5,185,699 A	*	2/1993	Reiner et al.	707/531
5,532,928 A	*	7/1996	Stanczyk et al.	705/7
5,664,112 A	*	9/1997	Sturgeon et al.	705/28
5,712,990 A	*	1/1998	Henderson	705/28

5,726,884 A	*	3/1998	Sturgeon et al.	705/9
5,965,858 A	*	10/1999	Suzuki et al.	235/375
6,067,549 A	*	5/2000	Smalley et al.	707/104
6,097,995 A	*	8/2000	Tipton et al.	700/266
6,122,622 A	*	9/2000	Wiitala et al.	705/28
6,163,732 A	*	12/2000	Petke et al.	700/106

* cited by examiner

Primary Examiner—Thomas Black

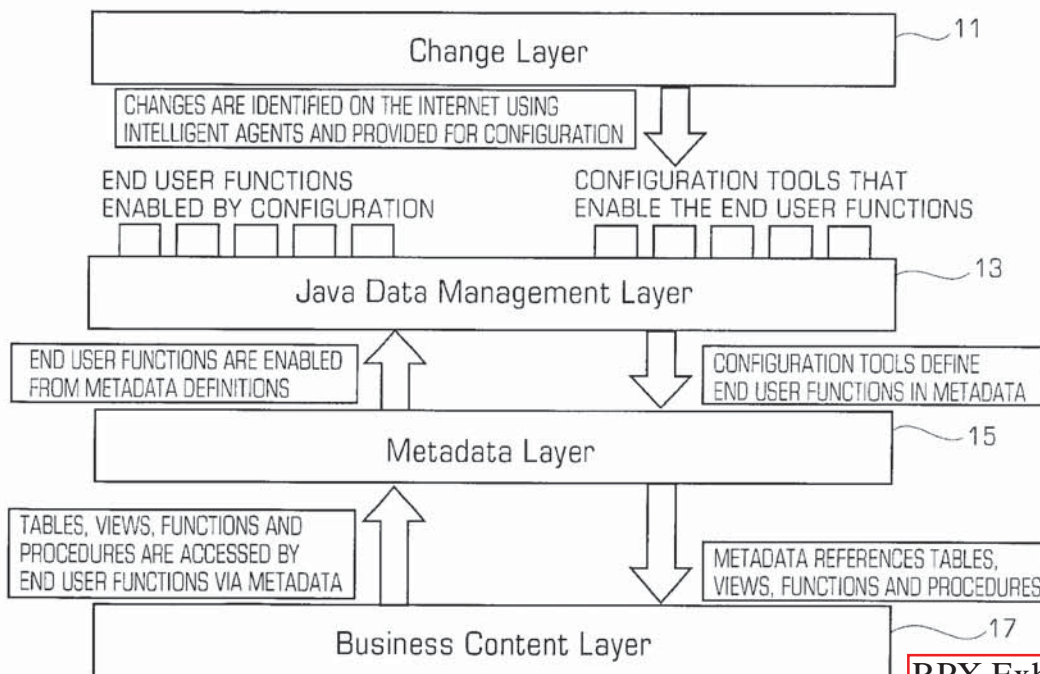
Assistant Examiner—Mary Wang

(74) *Attorney, Agent, or Firm*—Gray Cary Ware & Freidenrich, LLP

(57) **ABSTRACT**

An integrated system for managing changes in regulatory and non-regulatory requirements for business activities at an industrial or commercial facility. Application of this system to environmental, health and safety activities, and to food, drug, cosmetic, and medical treatment and device activities, are discussed as examples. The system: provides one or more databases that contain information on operations and requirements concerning an activity or area of business; receives information on regulatory and non-regulatory changes that affect operations of the business; converts these changes into changes in data entry forms, data processing and analysis procedures, and presentation (by printing, electronic display and/or distribution) of data processing and analysis results to selected recipients, without requiring the services of one or more programmers to re-key and/or reformat the items affected by the change; and implements receipt of change information and dissemination of data processing and analysis results using the facilities of the Internet.

1 Claim, 13 Drawing Sheets



RPX Exhibit 1013
RPX - ATT

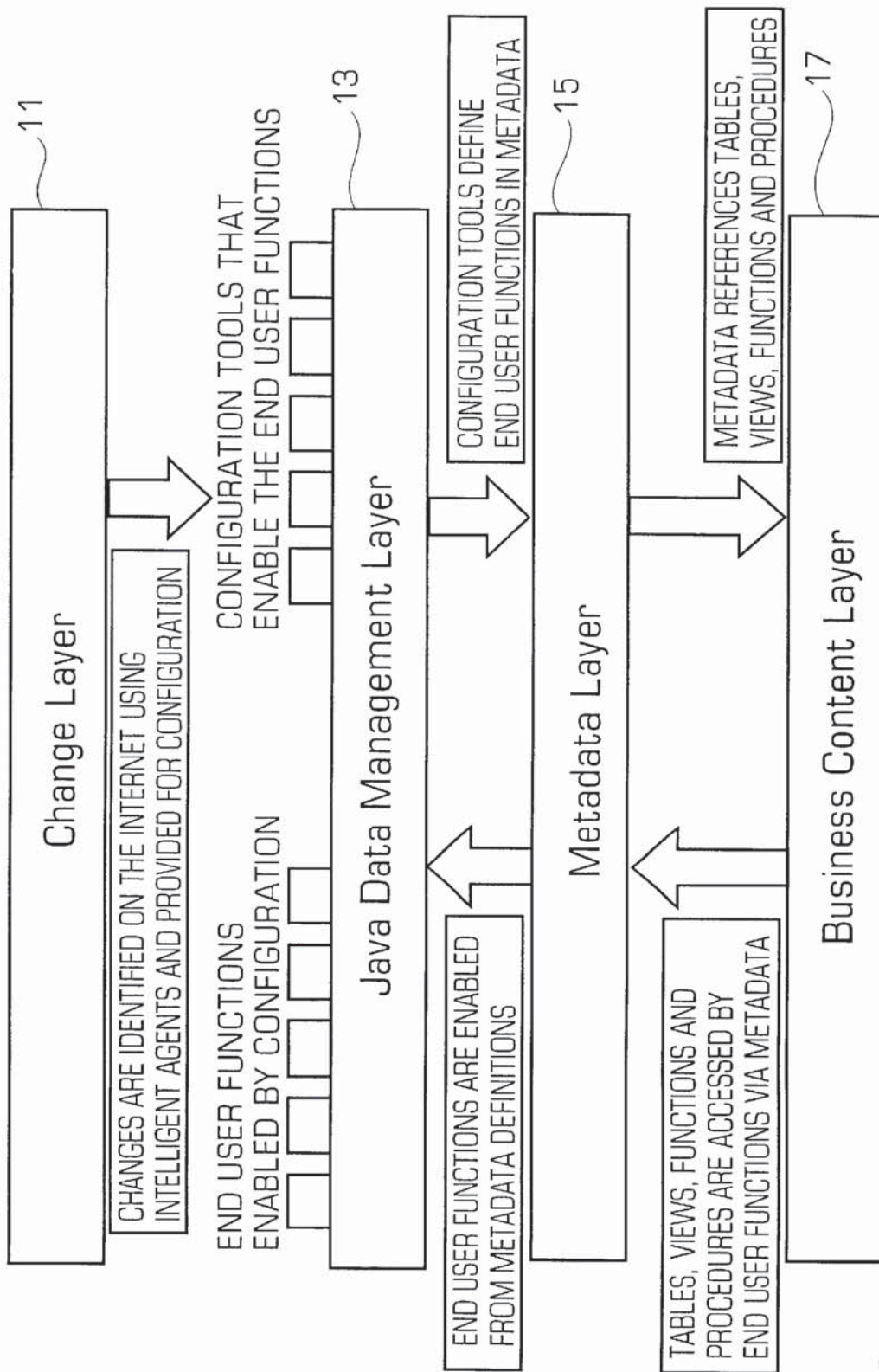


FIG. 1

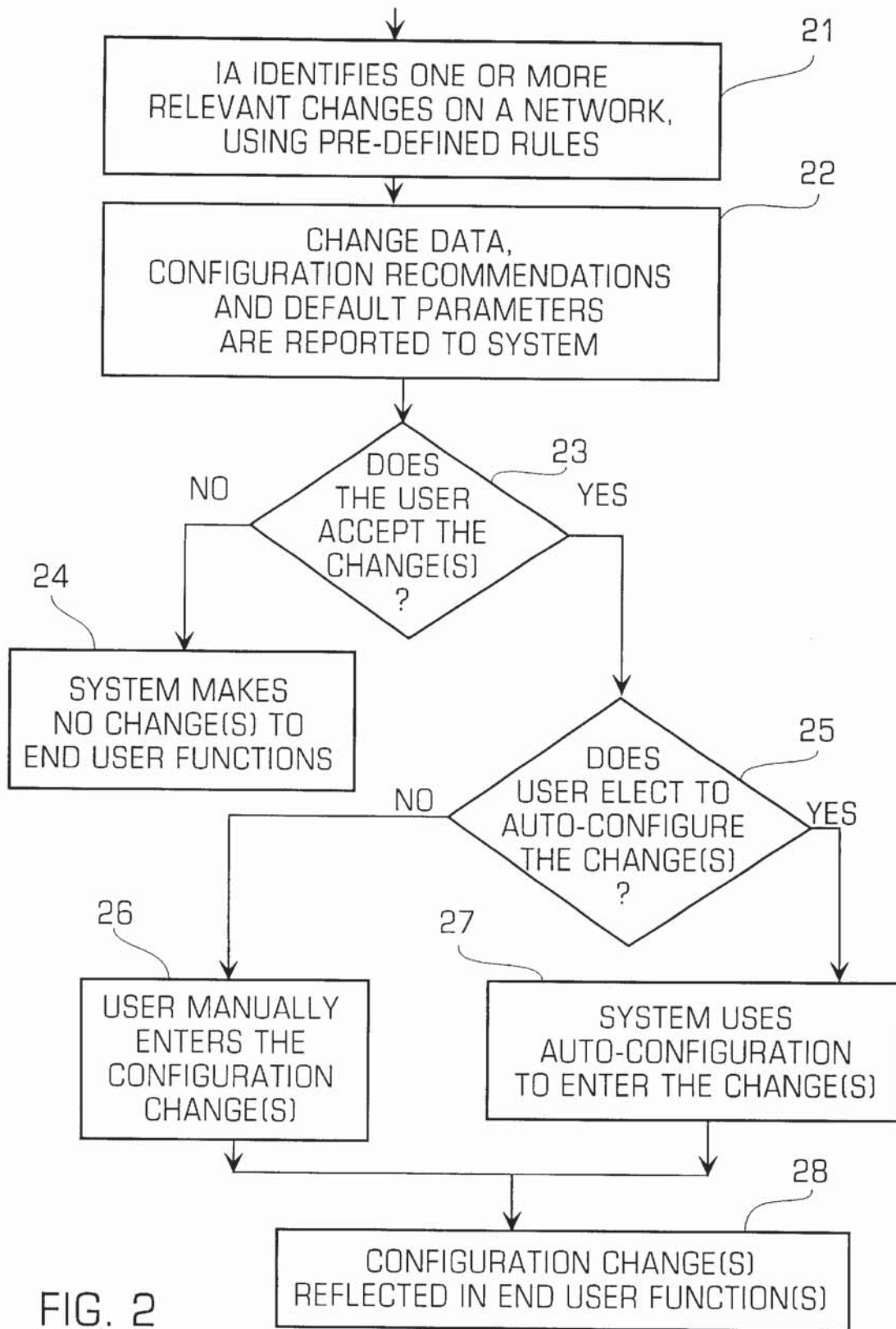


FIG. 2

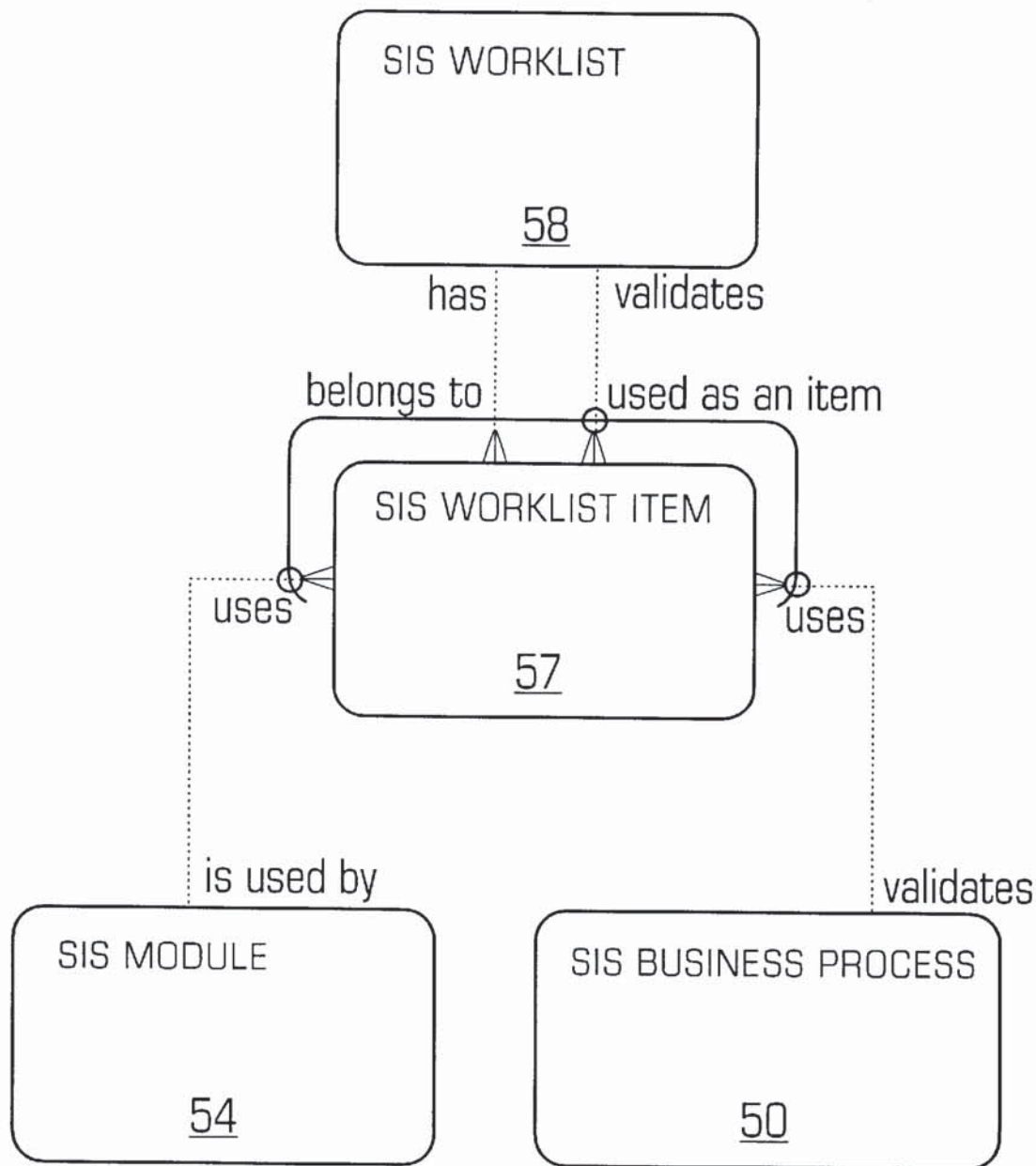
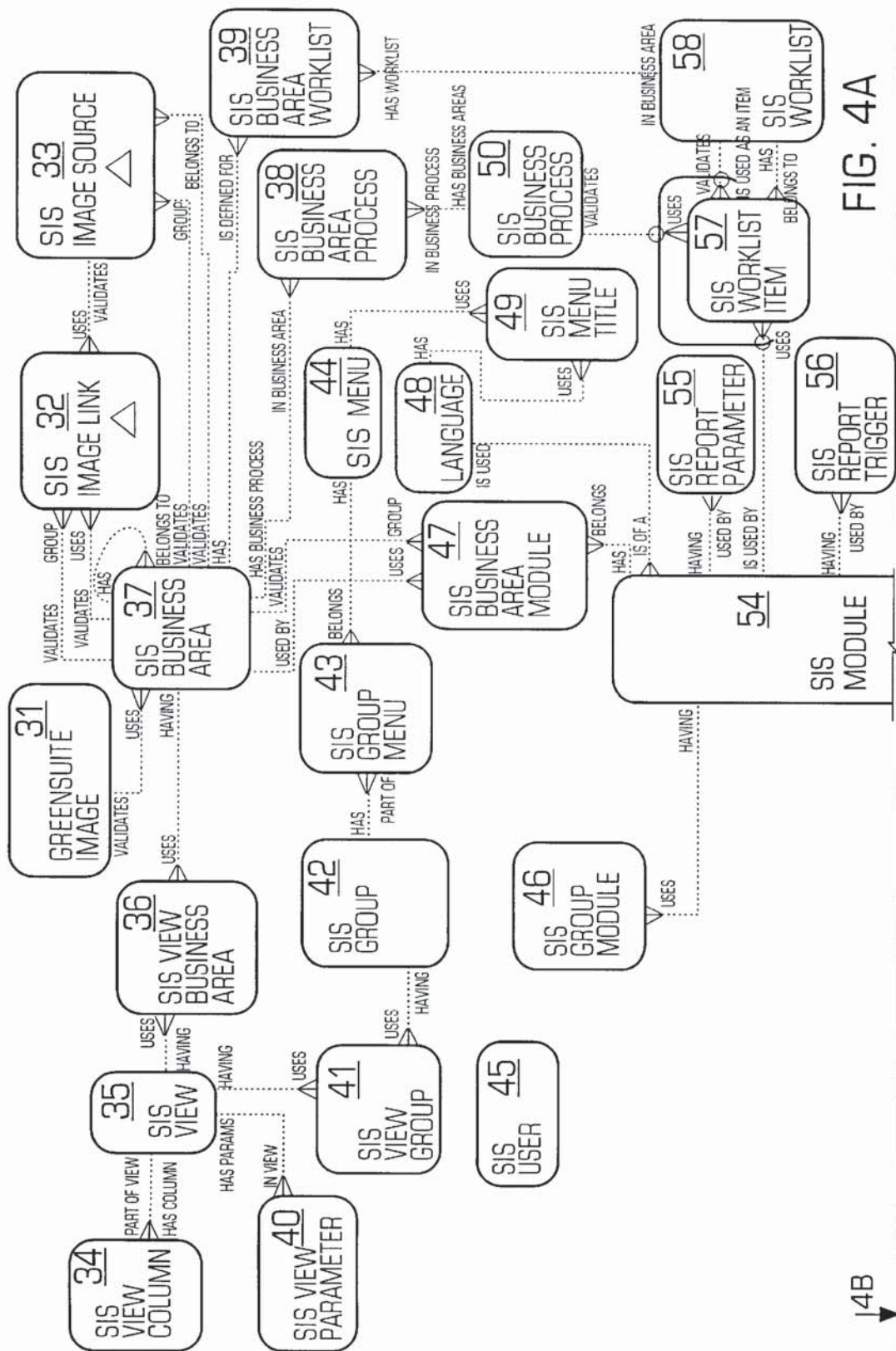


FIG. 3



Explore Litigation Insights

Docket Alarm provides insights to develop a more informed litigation strategy and the peace of mind of knowing you're on top of things.

Real-Time Litigation Alerts



Keep your litigation team up-to-date with **real-time alerts** and advanced team management tools built for the enterprise, all while greatly reducing PACER spend.

Our comprehensive service means we can handle Federal, State, and Administrative courts across the country.

Advanced Docket Research



With over 230 million records, Docket Alarm's cloud-native docket research platform finds what other services can't. Coverage includes Federal, State, plus PTAB, TTAB, ITC and NLRB decisions, all in one place.

Identify arguments that have been successful in the past with full text, pinpoint searching. Link to case law cited within any court document via Fastcase.

Analytics At Your Fingertips



Learn what happened the last time a particular judge, opposing counsel or company faced cases similar to yours.

Advanced out-of-the-box PTAB and TTAB analytics are always at your fingertips.

API

Docket Alarm offers a powerful API (application programming interface) to developers that want to integrate case filings into their apps.

LAW FIRMS

Build custom dashboards for your attorneys and clients with live data direct from the court.

Automate many repetitive legal tasks like conflict checks, document management, and marketing.

FINANCIAL INSTITUTIONS

Litigation and bankruptcy checks for companies and debtors.

E-DISCOVERY AND LEGAL VENDORS

Sync your system to PACER to automate legal marketing.