



US007860999B1

(12) **United States Patent**  
**Subramanian et al.**

(10) **Patent No.:** **US 7,860,999 B1**  
(45) **Date of Patent:** **\*Dec. 28, 2010**

(54) **DISTRIBUTED COMPUTATION IN NETWORK DEVICES**

(75) Inventors: **Siva Subramanian**, Cary, NC (US); **Tal I. Lavian**, Sunnyvale, CA (US)

(73) Assignee: **Avaya Inc.**, Basking Ridge, NJ (US)

(\*) Notice: Subject to any disclaimer, the term of this patent is extended or adjusted under 35 U.S.C. 154(b) by 1839 days.

This patent is subject to a terminal disclaimer.

(21) Appl. No.: **09/736,678**

(22) Filed: **Dec. 13, 2000**

**Related U.S. Application Data**

(60) Provisional application No. 60/239,484, filed on Oct. 11, 2000.

(51) **Int. Cl.**  
**G06F 15/16** (2006.01)  
**G06F 15/173** (2006.01)

(52) **U.S. Cl.** ..... **709/238; 709/235; 370/229; 370/230.1; 370/231; 370/234**

(58) **Field of Classification Search** ..... **709/235, 709/238; 370/229, 230.1, 231, 235, 234**  
See application file for complete search history.

(56) **References Cited**

**U.S. PATENT DOCUMENTS**

5,167,033 A \* 11/1992 Bryant et al. .... 709/235

5,377,327 A *	12/1994	Jain et al. ....	709/235
5,495,426 A *	2/1996	Waclawsky et al. ....	709/226
5,845,091 A *	12/1998	Dunne et al. ....	709/240
5,854,899 A *	12/1998	Callon et al. ....	709/238
6,044,075 A *	3/2000	Le Boudec et al. ....	370/351
6,078,953 A *	6/2000	Vaid et al. ....	709/223
6,151,633 A *	11/2000	Hurst et al. ....	709/235
6,226,267 B1 *	5/2001	Spinney et al. ....	370/235
6,286,052 B1 *	9/2001	McCloghrie et al. ....	709/238
6,289,389 B1 *	9/2001	Kikinis ....	709/239
6,421,734 B1 *	7/2002	Nessett et al. ....	709/247
6,424,621 B1 *	7/2002	Ramaswamy et al. ....	370/230
6,570,867 B1 *	5/2003	Robinson et al. ....	370/351
6,611,872 B1 *	8/2003	McCanne ....	709/238
6,611,874 B1 *	8/2003	Denecheau et al. ....	709/239
6,701,363 B1 *	3/2004	Chiu et al. ....	709/224
6,792,461 B1 *	9/2004	Hericourt	
6,868,061 B1 *	3/2005	Kilkki et al. ....	370/230.1

\* cited by examiner

*Primary Examiner*—Ario Etienne

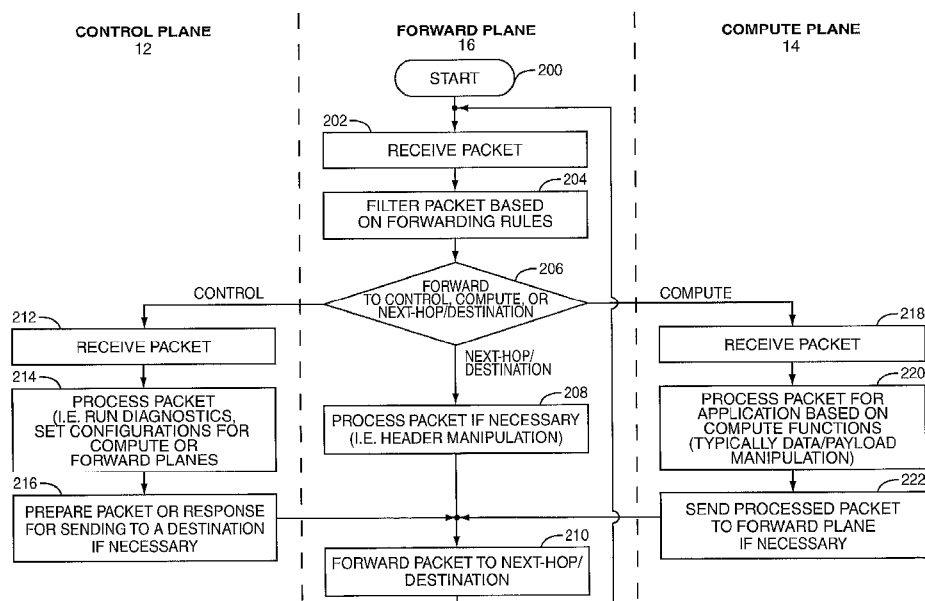
*Assistant Examiner*—Avi Gold

(74) *Attorney, Agent, or Firm*—Winthrow & Terranova, PLLC

(57) **ABSTRACT**

The present invention facilitates routing traffic over a network and distributing application level support among multiple routing devices during routing. Routing nodes are configured to process the content of the traffic to provide the requisite application level support. The traffic is routed, in part, based on the resources available for providing the processing. The processing of the traffic may be distributed throughout the network based on processing capacity of the routing nodes at any given time and given the amount of network congestion.

**50 Claims, 9 Drawing Sheets**



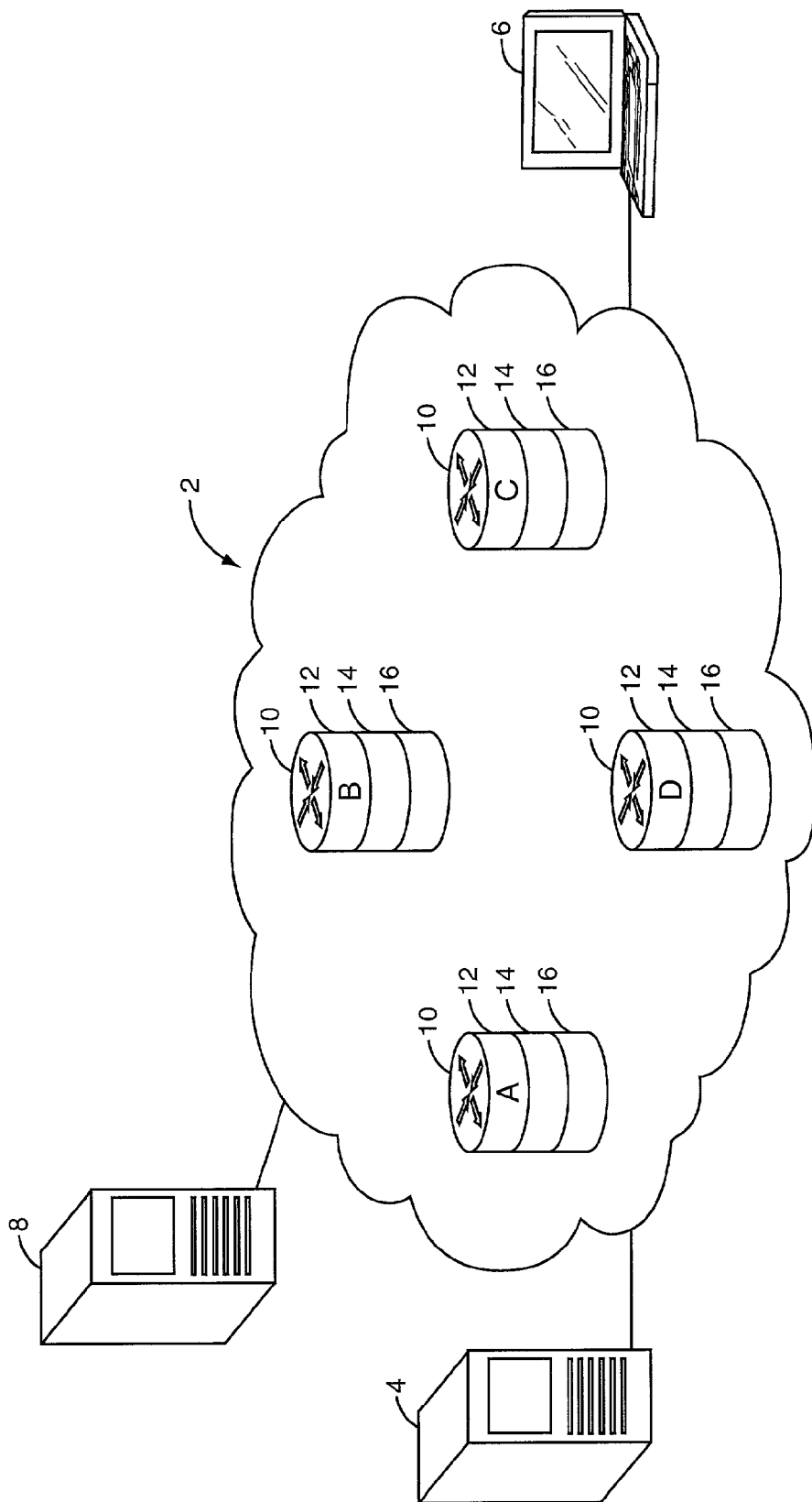


FIG. 1A

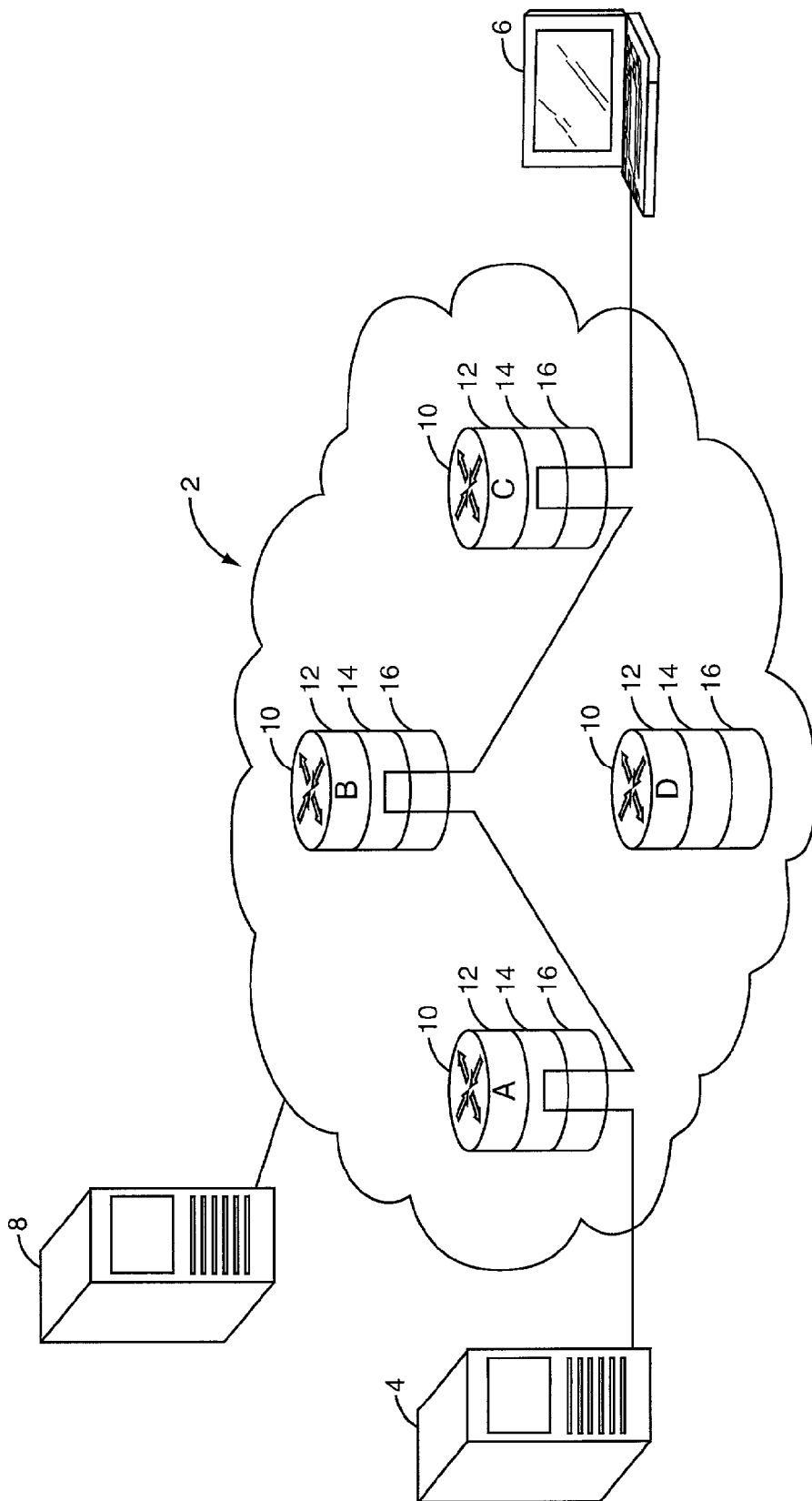


FIG. 1B

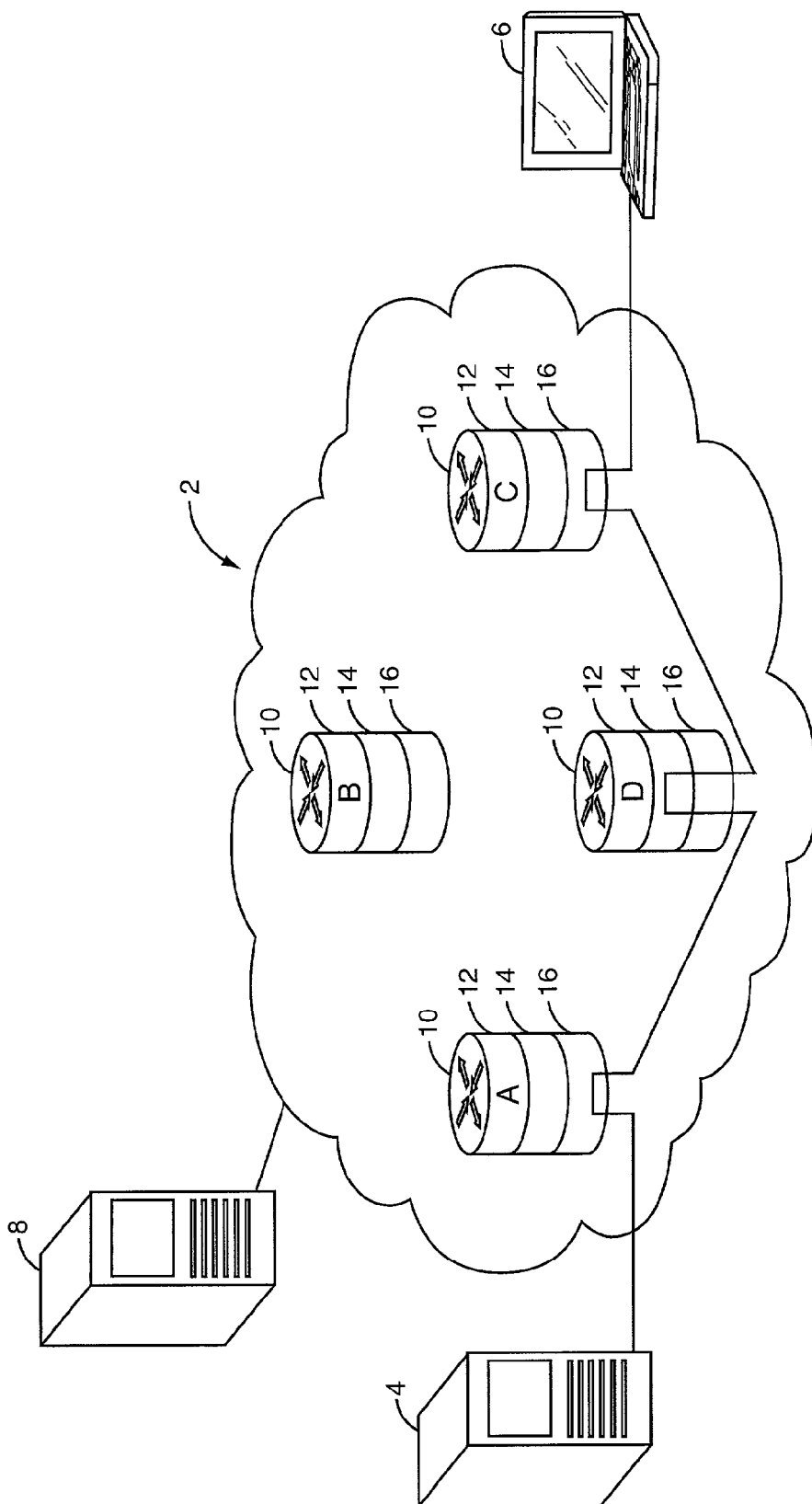


FIG. 1C

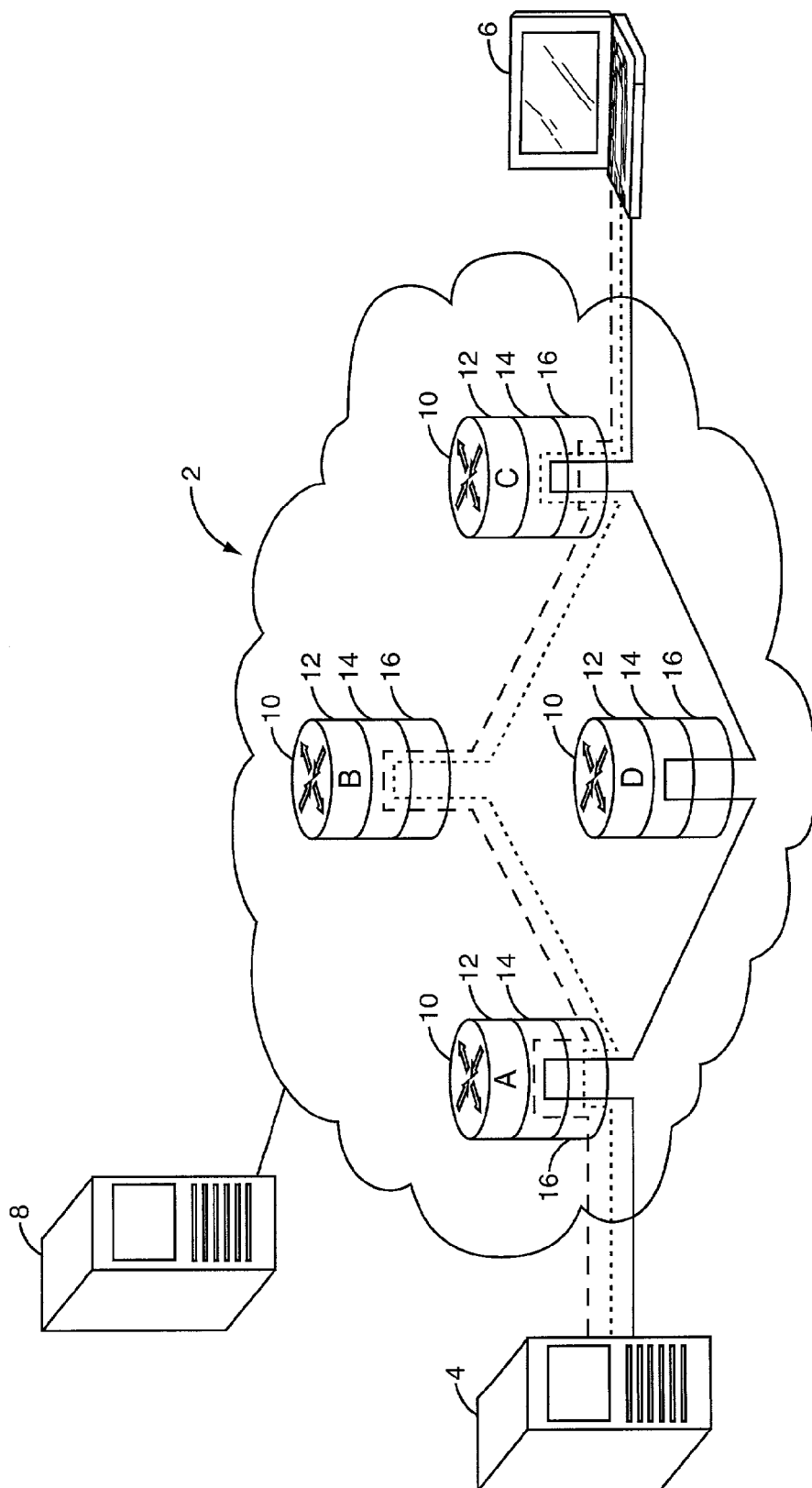


FIG. 1D

# Explore Litigation Insights

Docket Alarm provides insights to develop a more informed litigation strategy and the peace of mind of knowing you're on top of things.

## Real-Time Litigation Alerts



Keep your litigation team up-to-date with **real-time alerts** and advanced team management tools built for the enterprise, all while greatly reducing PACER spend.

Our comprehensive service means we can handle Federal, State, and Administrative courts across the country.

## Advanced Docket Research



With over 230 million records, Docket Alarm's cloud-native docket research platform finds what other services can't. Coverage includes Federal, State, plus PTAB, TTAB, ITC and NLRB decisions, all in one place.

Identify arguments that have been successful in the past with full text, pinpoint searching. Link to case law cited within any court document via Fastcase.

## Analytics At Your Fingertips



Learn what happened the last time a particular judge, opposing counsel or company faced cases similar to yours.

Advanced out-of-the-box PTAB and TTAB analytics are always at your fingertips.

## API

Docket Alarm offers a powerful API (application programming interface) to developers that want to integrate case filings into their apps.

## LAW FIRMS

Build custom dashboards for your attorneys and clients with live data direct from the court.

Automate many repetitive legal tasks like conflict checks, document management, and marketing.

## FINANCIAL INSTITUTIONS

Litigation and bankruptcy checks for companies and debtors.

## E-DISCOVERY AND LEGAL VENDORS

Sync your system to PACER to automate legal marketing.