

[54] **METHOD AND APPARATUS FOR LOCATING A MOBILE STATION BY COMPARING CALCULATED LOCATION AREA WITH GPS COORDINATES**

5,293,318	3/1994	Fukushima	364/449.95
5,365,447	11/1994	Dennis	342/357
5,390,124	2/1995	Kyrtsos	464/449.9
5,390,339	2/1995	Bruckert et al.	455/56.1
5,422,813	6/1995	Schuchman	455/440
5,479,482	12/1995	Grimes	379/59
5,504,482	4/1996	Schreder	364/449.7

[75] Inventors: **Nicolas Kauser; Alan Denis MacDonald**, both of Bellevue, Wash.

Primary Examiner—Reinhard J. Eisenzopf
Assistant Examiner—Lester G. Kincaid

[73] Assignee: **AT&T Wireless Services, Inc.**, Middletown, N.J.

[57] **ABSTRACT**

[21] Appl. No.: 603,793

A method and apparatus for determining the location of a mobile telephone within the serving area of a mobile telephone system. A mobile switching center analyzes the calling mobile telephone number and called telephone number to determine if a location function is required. Upon initiation of the location function by the mobile switching center, a mobile location module calculates a location estimate of the mobile telephone. The mobile location module receives a list of signal strengths received by the mobile telephone from cell site antennas within the serving area. The distance between the mobile telephone and a plurality of cell site antennas is calculated using a technique which reduces the error component of the calculated distances. These reduced error distances are used to geometrically determine an estimate of the location area. In addition, the mobile telephone comprises a GPS receiver/processor for sending the most recent GPS coordinates of the mobile telephone which are within a predetermined confidence level to the mobile location module. These GPS coordinates are compared with the calculated location area to increase the accuracy of the location determination.

[22] Filed: **Feb. 20, 1996**

Related U.S. Application Data

[63] Continuation-in-part of Ser. No. 472,082, Jun. 7, 1995.

[51] Int. Cl.⁶ **G01C 21/00; G01S 3/02; H04B 7/26**

[52] U.S. Cl. **455/456; 455/67.1; 364/449.8; 342/451**

[58] **Field of Search** 455/54.1, 56.1, 455/67.1, 33.1, 33.4, 33.2, 67.6, 524, 456, 457, 440; 379/59, 60; 342/457, 357, 451, 452, 450, 463; 364/449.1, 449.8, 449.9, 449.95, 449.7

[56] **References Cited**

U.S. PATENT DOCUMENTS

4,903,212	2/1990	Yokouchi et al.	364/449.95
5,043,736	8/1991	Darnell et al.	342/357
5,055,851	10/1991	Sheffer	455/54.1
5,272,483	12/1993	Kato	342/357

32 Claims, 6 Drawing Sheets

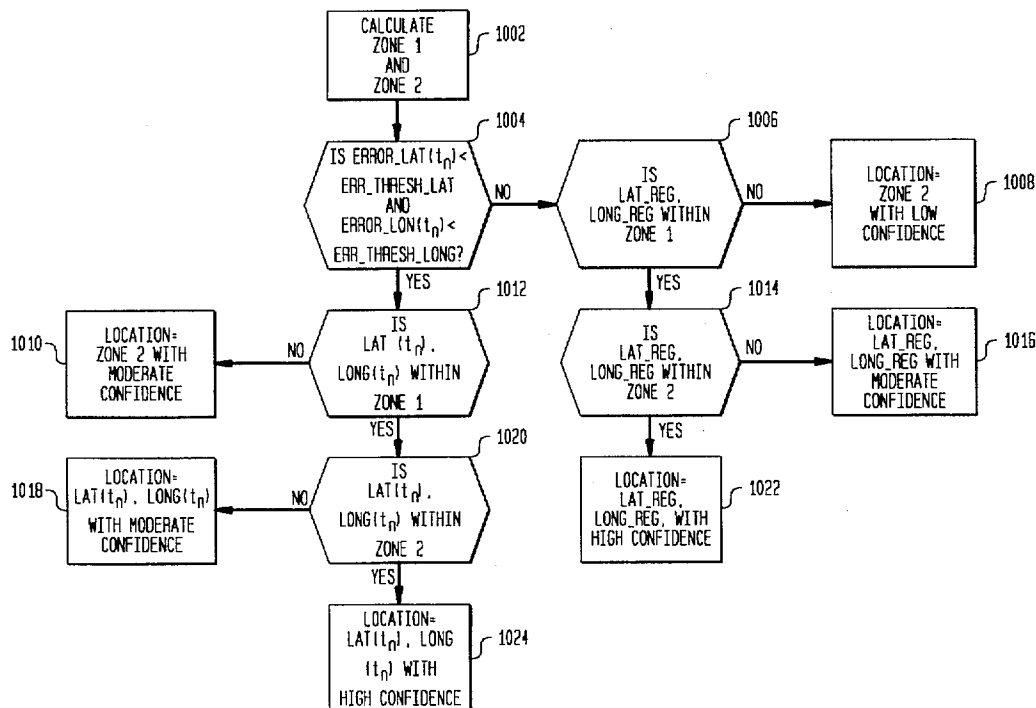


FIG. 1

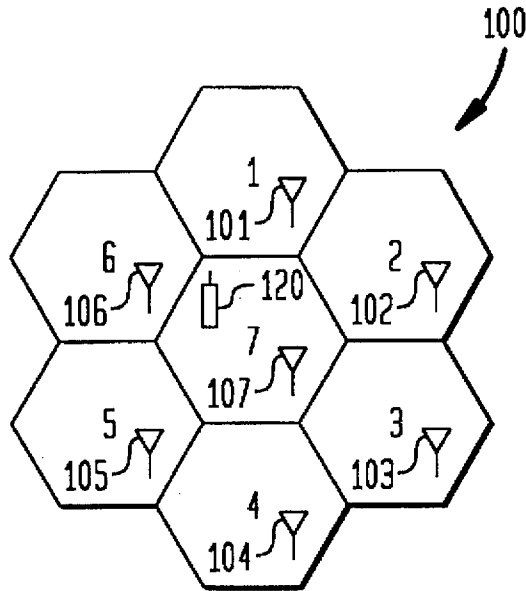


FIG. 3

CELL	SS
1	RSSI ₁
2	RSSI ₂
3	RSSI ₃
4	RSSI ₄
5	RSSI ₅
6	RSSI ₆

An arrow points from the label 300 to the table.

FIG. 2

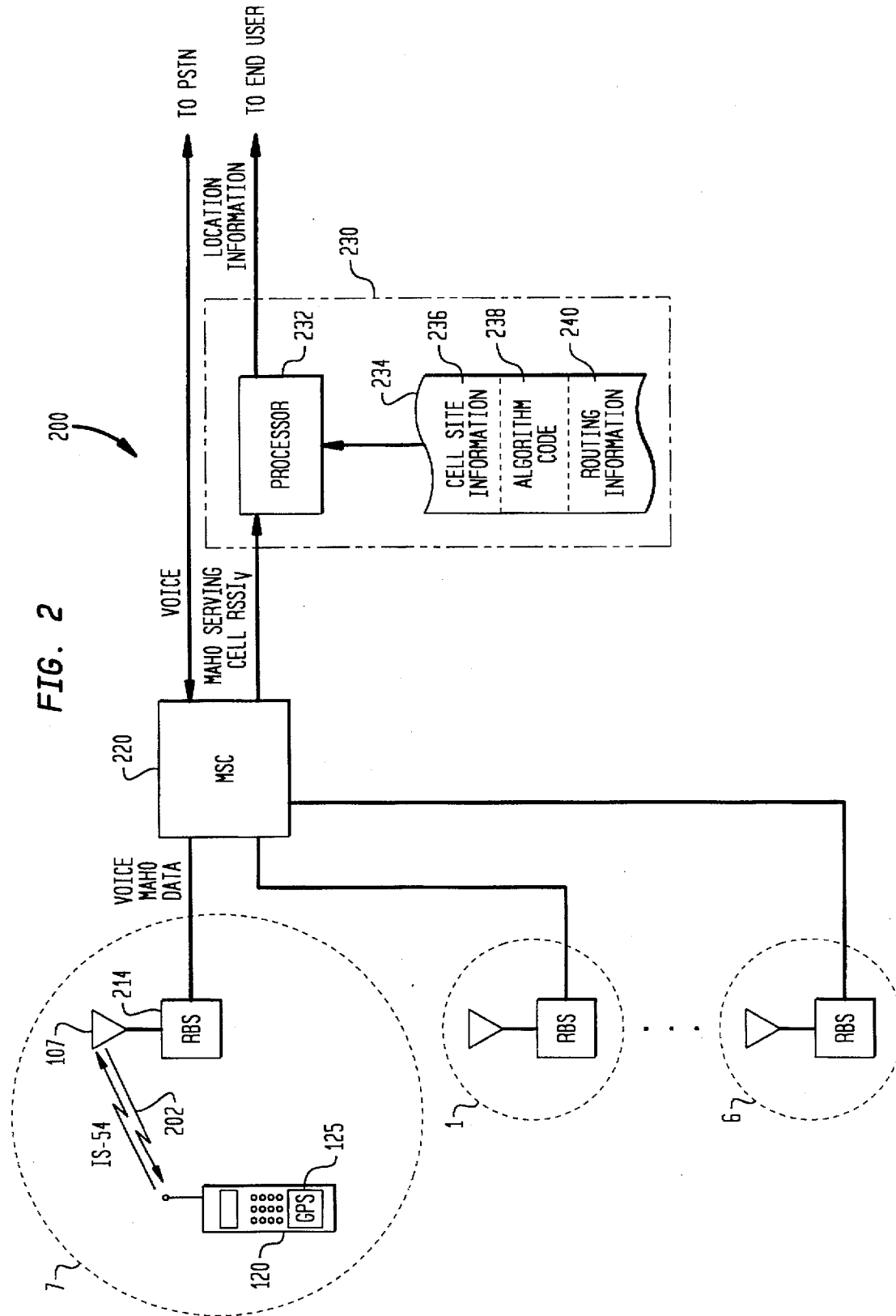


FIG. 4

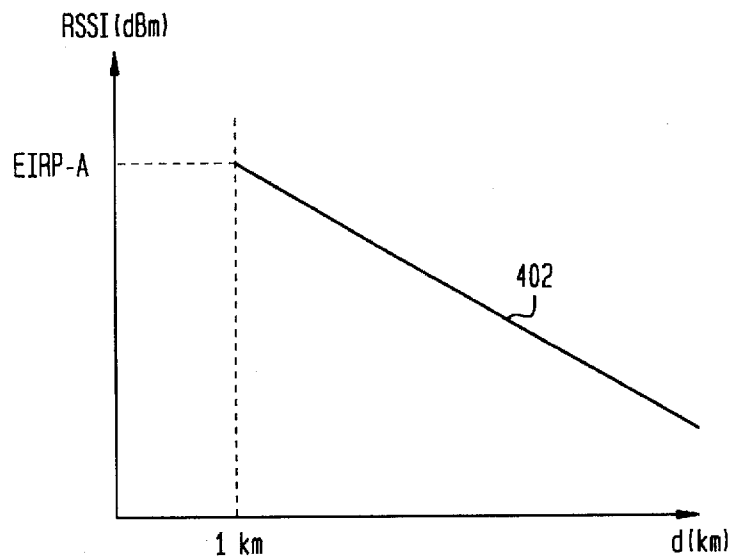


FIG. 5

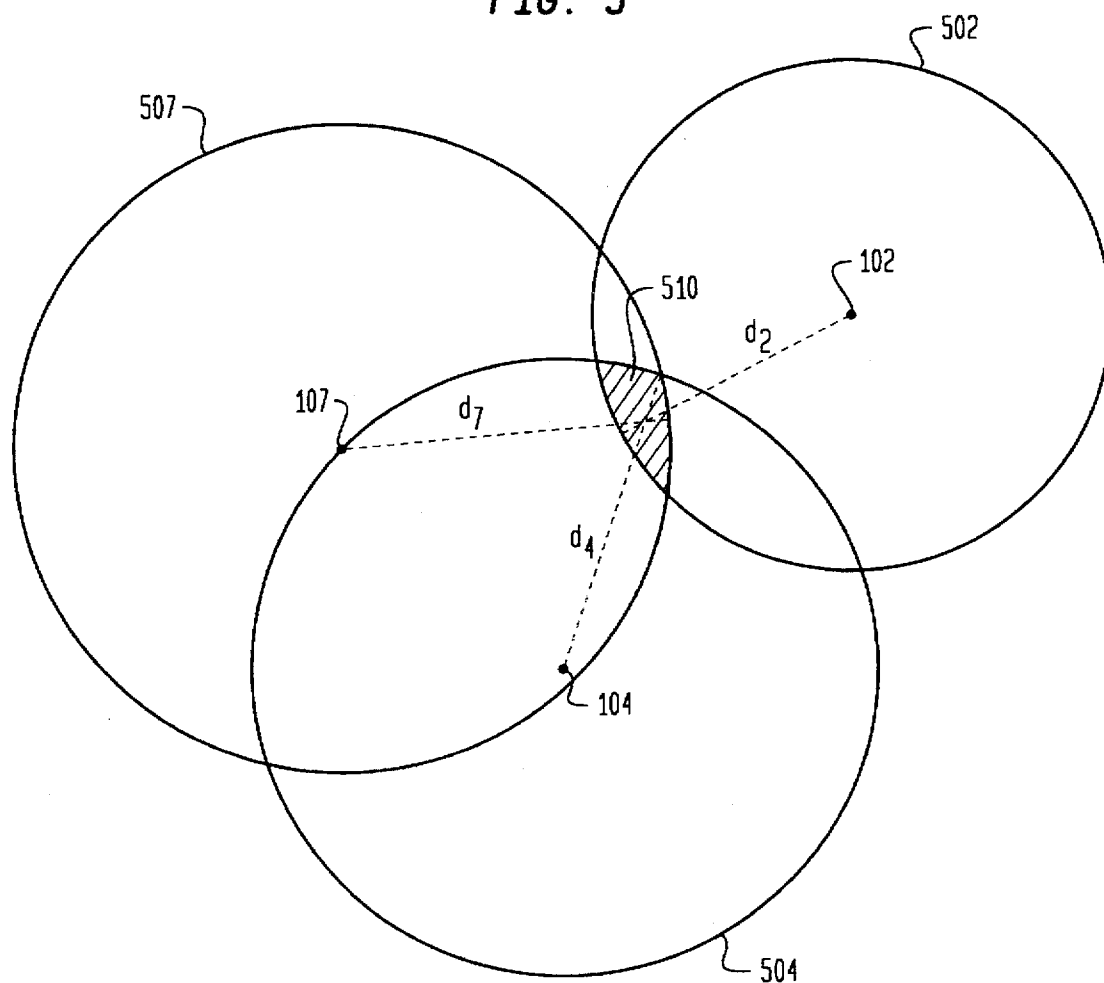


FIG. 6

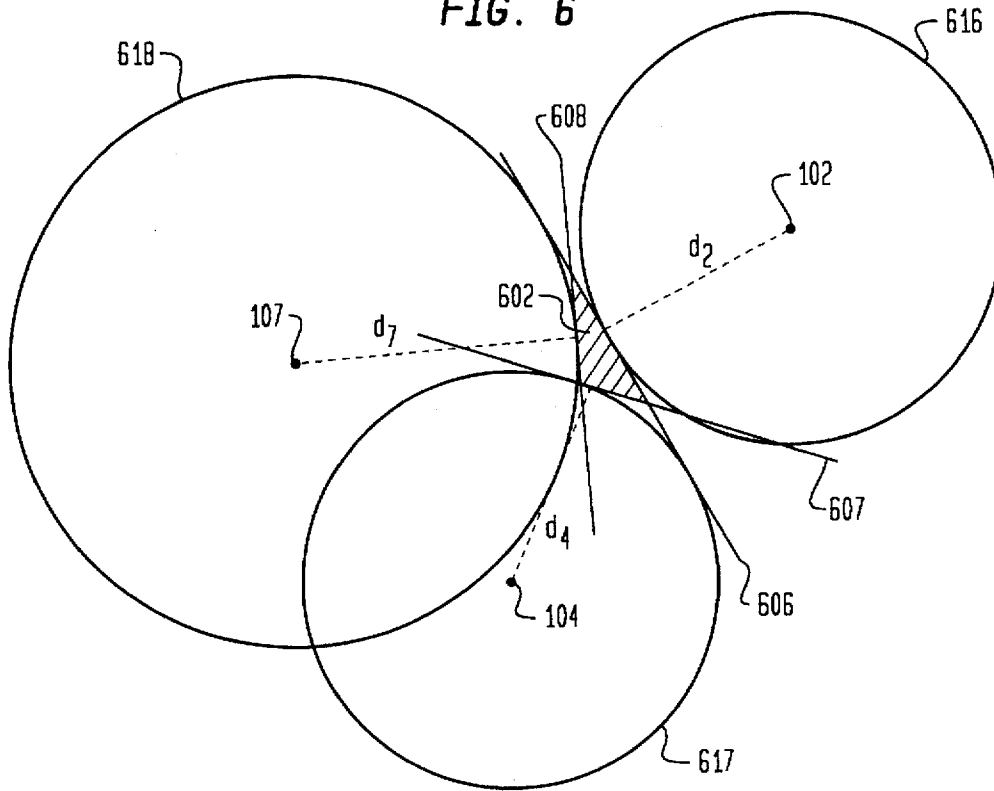
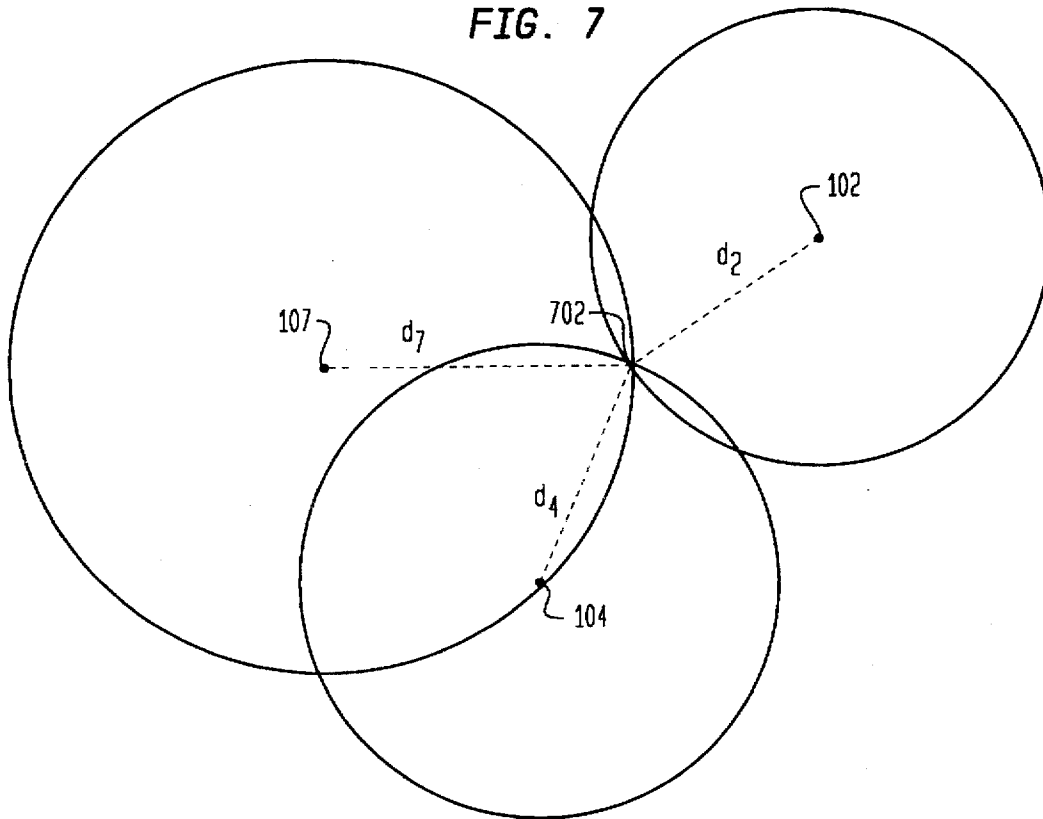


FIG. 7



Explore Litigation Insights

Docket Alarm provides insights to develop a more informed litigation strategy and the peace of mind of knowing you're on top of things.

Real-Time Litigation Alerts



Keep your litigation team up-to-date with **real-time alerts** and advanced team management tools built for the enterprise, all while greatly reducing PACER spend.

Our comprehensive service means we can handle Federal, State, and Administrative courts across the country.

Advanced Docket Research



With over 230 million records, Docket Alarm's cloud-native docket research platform finds what other services can't. Coverage includes Federal, State, plus PTAB, TTAB, ITC and NLRB decisions, all in one place.

Identify arguments that have been successful in the past with full text, pinpoint searching. Link to case law cited within any court document via Fastcase.

Analytics At Your Fingertips



Learn what happened the last time a particular judge, opposing counsel or company faced cases similar to yours.

Advanced out-of-the-box PTAB and TTAB analytics are always at your fingertips.

API

Docket Alarm offers a powerful API (application programming interface) to developers that want to integrate case filings into their apps.

LAW FIRMS

Build custom dashboards for your attorneys and clients with live data direct from the court.

Automate many repetitive legal tasks like conflict checks, document management, and marketing.

FINANCIAL INSTITUTIONS

Litigation and bankruptcy checks for companies and debtors.

E-DISCOVERY AND LEGAL VENDORS

Sync your system to PACER to automate legal marketing.