

(19) **United States**

(12) **Patent Application Publication** (10) **Pub. No.: US 2002/0121056 A1**

Von Hoyningen Huene et al.

(43) **Pub. Date: Sep. 5, 2002**

(54) **MOVEABLE AND DEMOUNTABLE WALL PANEL SYSTEM**

(75) Inventors: **Eberhard Von Hoyningen Huene**, Hudson (CA); **Michael Salzman**, Dollard-des-Ormeaux (CA); **Geoffrey Boyer**, Pointe-Claire (CA)

Correspondence Address:
MERCHANT & GOULD PC
P.O. BOX 2903
MINNEAPOLIS, MN 55402-0903 (US)

(73) Assignee: **EBERHARD VON HUENE & ASSOCIATES**, Vaudreuil-Dorion (CA)

(21) Appl. No.: **10/027,872**

(22) Filed: **Dec. 21, 2001**

(30) **Foreign Application Priority Data**

Dec. 22, 2000 (CA) 2,329,591

Publication Classification

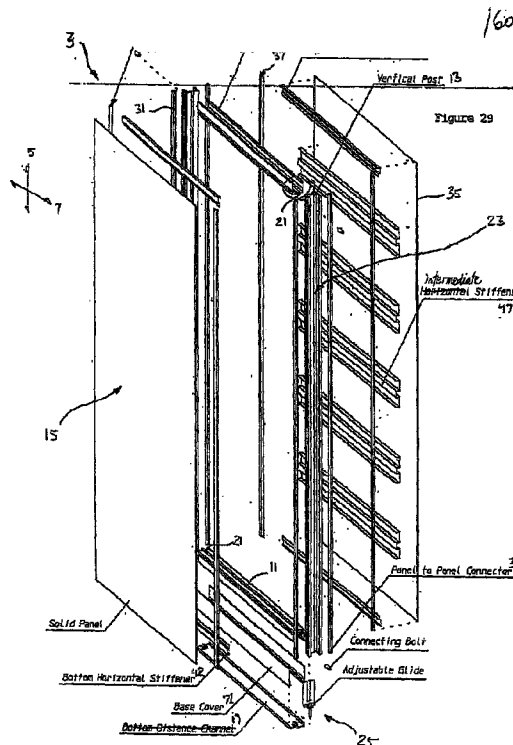
(51) **Int. Cl.⁷** **E04H 1/00**

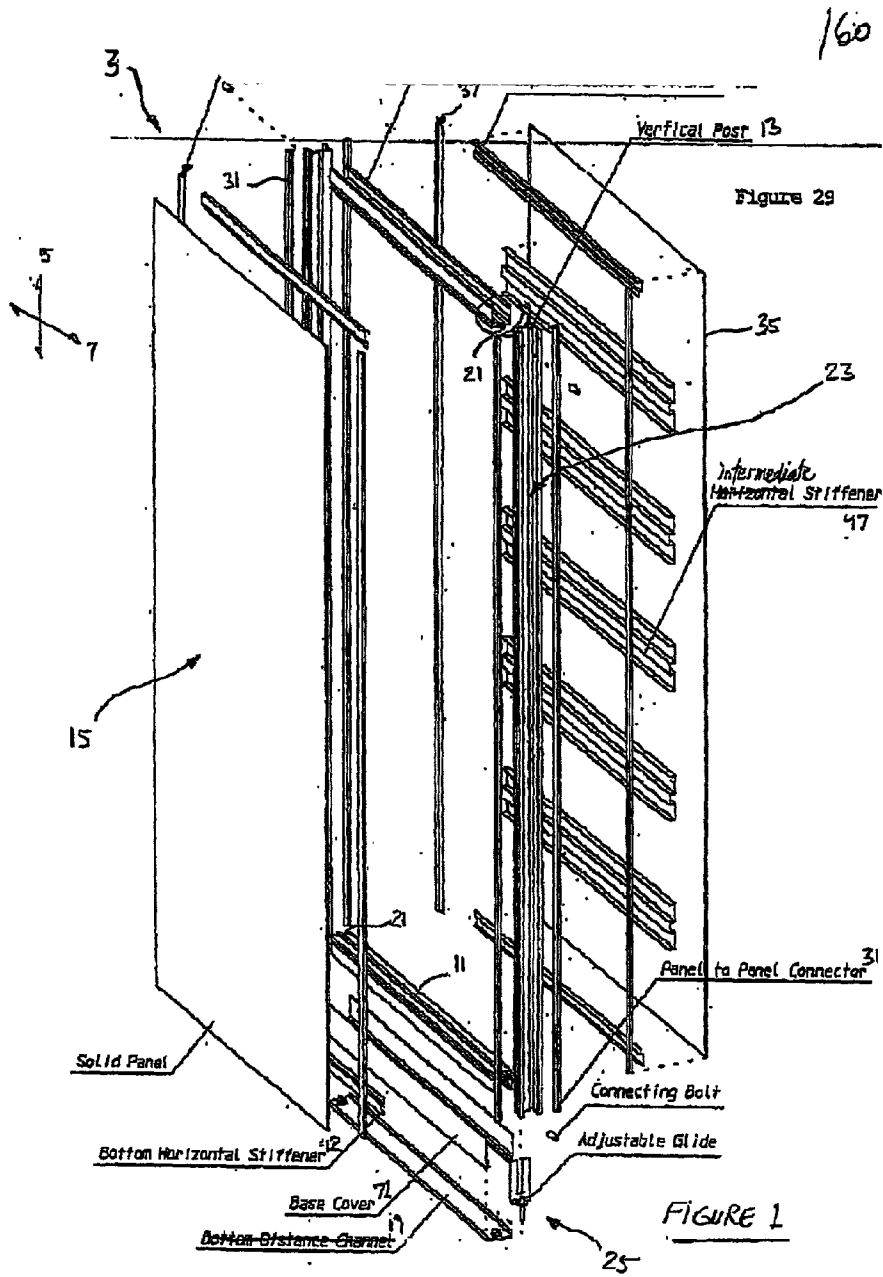
(52) **U.S. Cl.** **52/241; 52/126.3**

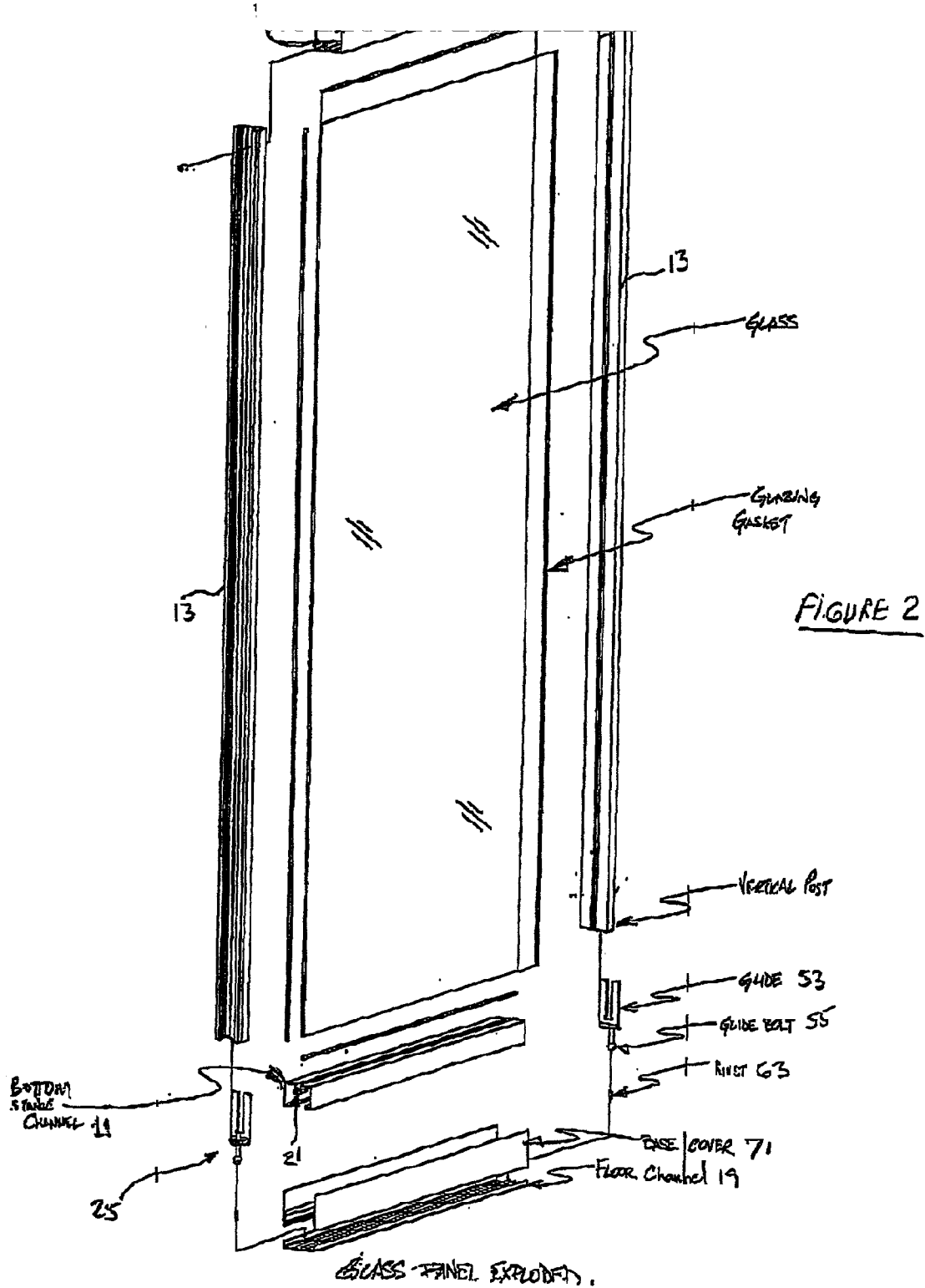
(57) **ABSTRACT**

A moveable and demountable wall panel system including a plurality of panels used for defining an office space. Each panel has opposite top and bottom distance channels, oppo-

site left and right vertical posts, a panel covering, a ceiling rail, and an articulating floor channel. The top and bottom distance channels extend along a direction substantially parallel to a horizontal axis of the panel. The left and right vertical posts extend along a direction substantially parallel to a vertical axis of the panel. The distance channels and vertical posts are affixed to one another by means of connecting studs in order to form a rectangular support frame of the panel. The panel covering is removably mountable onto receiving means of the rectangular support frame. The ceiling rail is operatively connected to a top portion of the rectangular support frame and is used for operatively securing the rectangular support frame of the panel to a ceiling surface. The articulating floor channel is operatively connected to a bottom portion of the rectangular support frame by means of left and right glide assemblies mounted into receiving channels of the left and right vertical posts respectively. The articulating floor channel is used for operatively securing the rectangular support frame of the panel to a ground surface. The glide assemblies are also used for displacing the rectangular support frame with respect to the floor channel along a direction substantially parallel to the vertical axis of the panel. Each vertical post has at least one receiving lip extending along a direction substantially parallel to the vertical axis of the panel. Each receiving lip is removable connectable to another receiving lip of a vertical post of a neighboring panel by means of a connector for selectively and removably connecting together a plurality of panels in order to define the office space. By virtue of its design and its components, the present wall panel system is a moveable non-progressive mountable and demountable wall panel system.







160

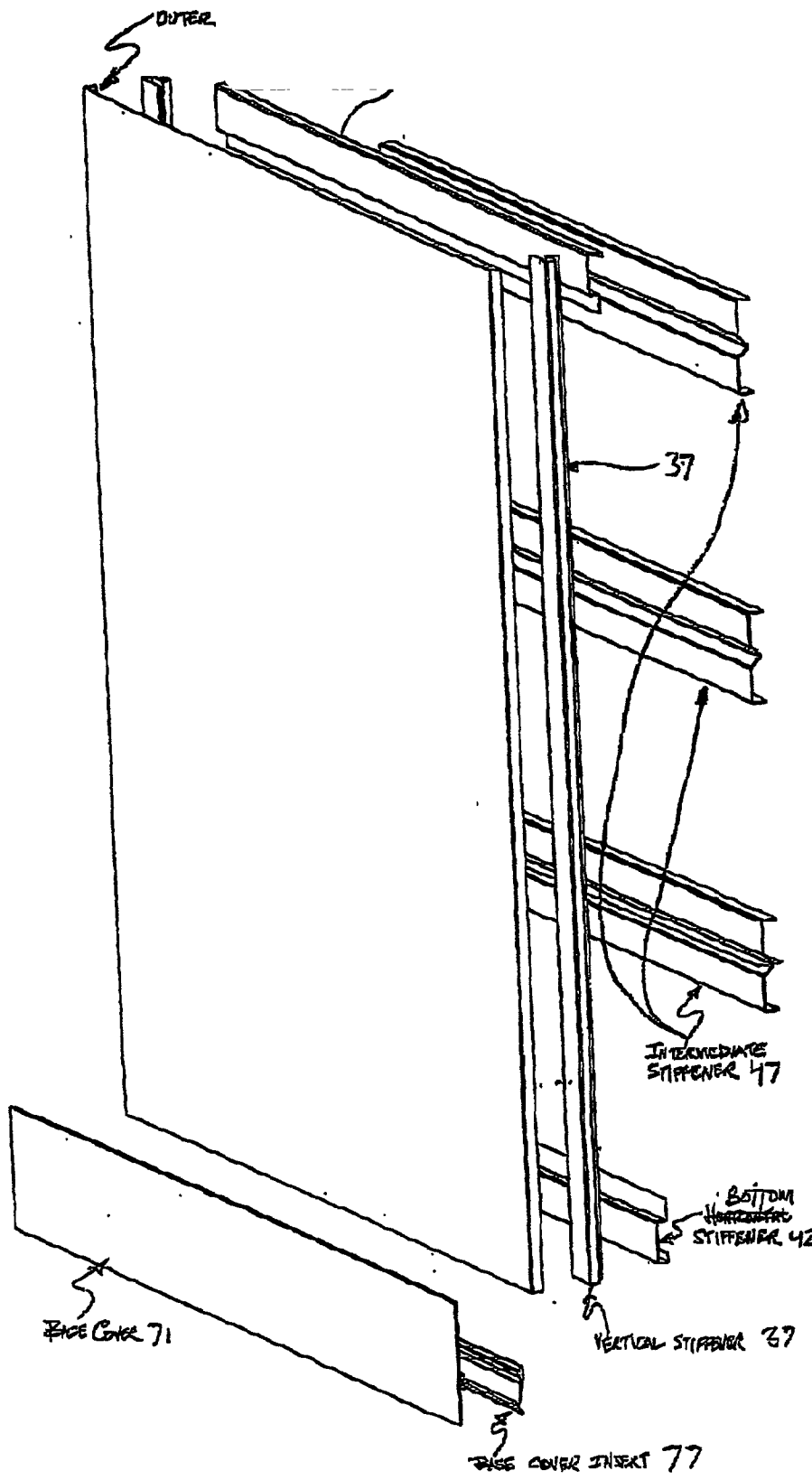


FIGURE 3

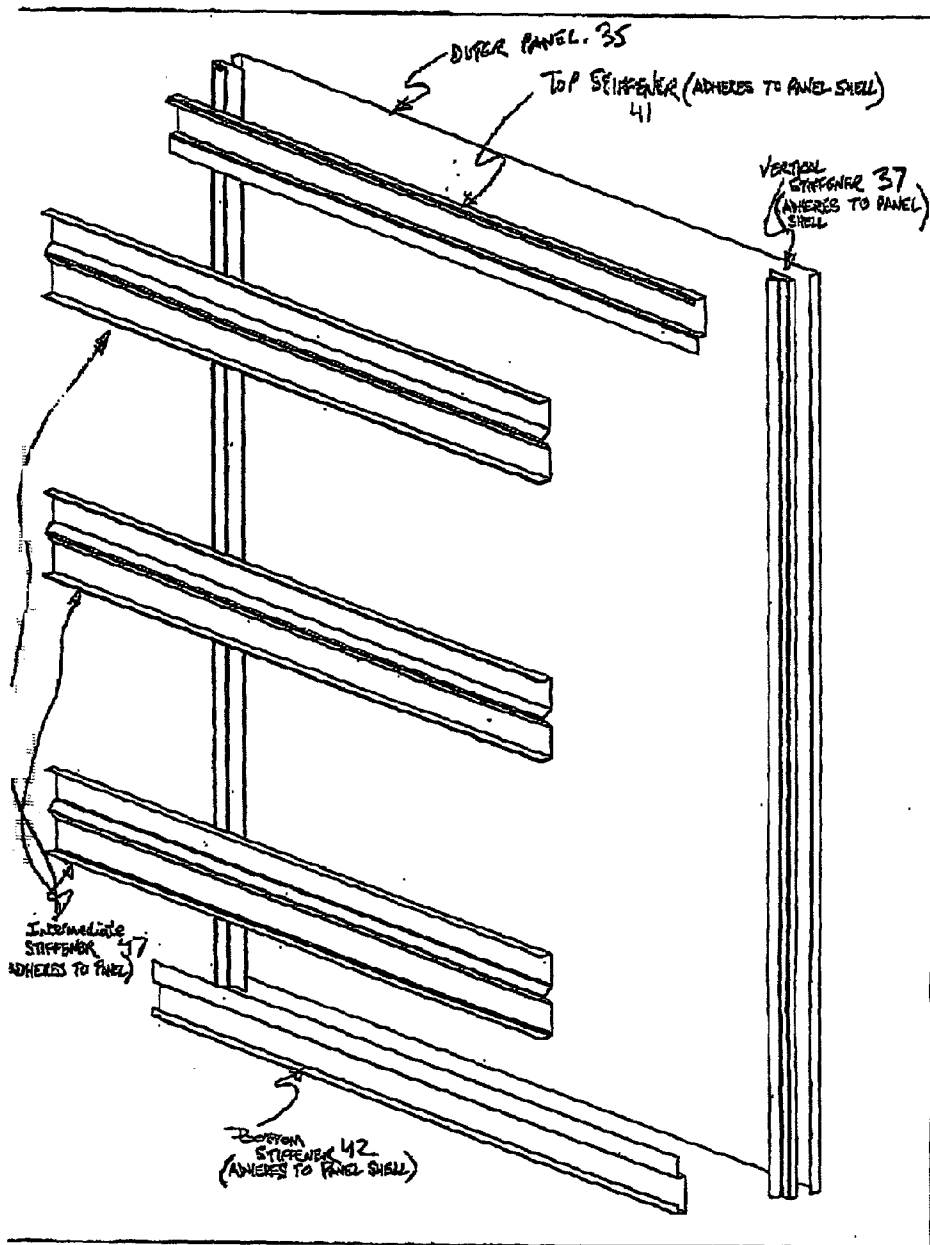


FIGURE 4

OTEX Panel Construction

Explore Litigation Insights

Docket Alarm provides insights to develop a more informed litigation strategy and the peace of mind of knowing you're on top of things.

Real-Time Litigation Alerts



Keep your litigation team up-to-date with **real-time alerts** and advanced team management tools built for the enterprise, all while greatly reducing PACER spend.

Our comprehensive service means we can handle Federal, State, and Administrative courts across the country.

Advanced Docket Research



With over 230 million records, Docket Alarm's cloud-native docket research platform finds what other services can't. Coverage includes Federal, State, plus PTAB, TTAB, ITC and NLRB decisions, all in one place.

Identify arguments that have been successful in the past with full text, pinpoint searching. Link to case law cited within any court document via Fastcase.

Analytics At Your Fingertips



Learn what happened the last time a particular judge, opposing counsel or company faced cases similar to yours.

Advanced out-of-the-box PTAB and TTAB analytics are always at your fingertips.

API

Docket Alarm offers a powerful API (application programming interface) to developers that want to integrate case filings into their apps.

LAW FIRMS

Build custom dashboards for your attorneys and clients with live data direct from the court.

Automate many repetitive legal tasks like conflict checks, document management, and marketing.

FINANCIAL INSTITUTIONS

Litigation and bankruptcy checks for companies and debtors.

E-DISCOVERY AND LEGAL VENDORS

Sync your system to PACER to automate legal marketing.