

- [54] **DEMOUNTABLE INTERIOR PARTITION SYSTEM AND COMPONENTS THEREFOR**
- [75] Inventors: **Richard L. Raith**, Solon, Ohio;
Joseph A. Davenport, Portland, Oreg.
- [73] Assignee: **Hauserman, Inc.**, Cleveland, Ohio
- [21] Appl. No.: **215,540**
- [22] Filed: **Dec. 11, 1980**

Related U.S. Application Data

- [62] Division of Ser. No. 882,668, Mar. 2, 1978, Pat. No. 4,251,968.
- [51] Int. Cl.³ **E04C 1/10**
- [52] U.S. Cl. **52/580; 52/588; 52/594; 52/802**
- [58] Field of Search **52/588, 802, 805, 284, 52/595, 594, 579, 580**

References Cited

U.S. PATENT DOCUMENTS

863,779	8/1907	Budd	52/579
2,048,457	7/1936	Mauser	52/580
2,693,256	11/1954	Crafton	52/802
2,711,231	6/1955	Spangler	52/588
3,186,525	6/1965	Gresham et al.	52/579 X
3,416,793	12/1968	Fox	52/588 X
3,742,672	7/1973	Schaeufele	52/588 X
3,886,698	6/1975	Raith et al.	52/36
3,992,839	11/1976	La Borde	52/594 X
4,104,837	8/1978	Naito	52/588 X
4,183,393	1/1980	Bailey	52/802 X

FOREIGN PATENT DOCUMENTS

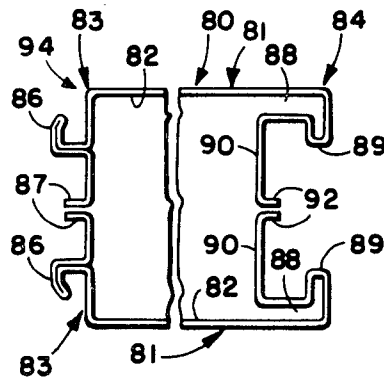
258954 11/1964 Australia 52/594

Primary Examiner—Carl D. Friedman
Attorney, Agent, or Firm—Maky, Renner, Otto & Boiselle

[57] **ABSTRACT**

An interior partition system wherein with relatively few components, most of which can be roll formed from common sets of roller dies, a wide variety of interior screens or full height partitions can be constructed, thus avoiding the necessity of the manufacture and inventory of a large number of parts. For some parts, where volume may not justify the investment in the required roll sets, other manufacturing techniques may be employed, but such parts are readily compatible with the high volume components and usable interchangeably therewith. In the preferred form, a verticaless panel is constructed having a roll formed slotted, recessed edge which includes a double thickness folded flange of special configuration so that adjacent panels may readily be secured together either with a multipurpose co-extruded plastic zipper strip which will provide the desired light and sound seal, accommodate a wide variety of surface finishes and provide an appearance cover for the recessed slots yet providing access thereto for hanging components or accessories to the screen or partition, or a spring metal panel connector.

5 Claims, 30 Drawing Figures



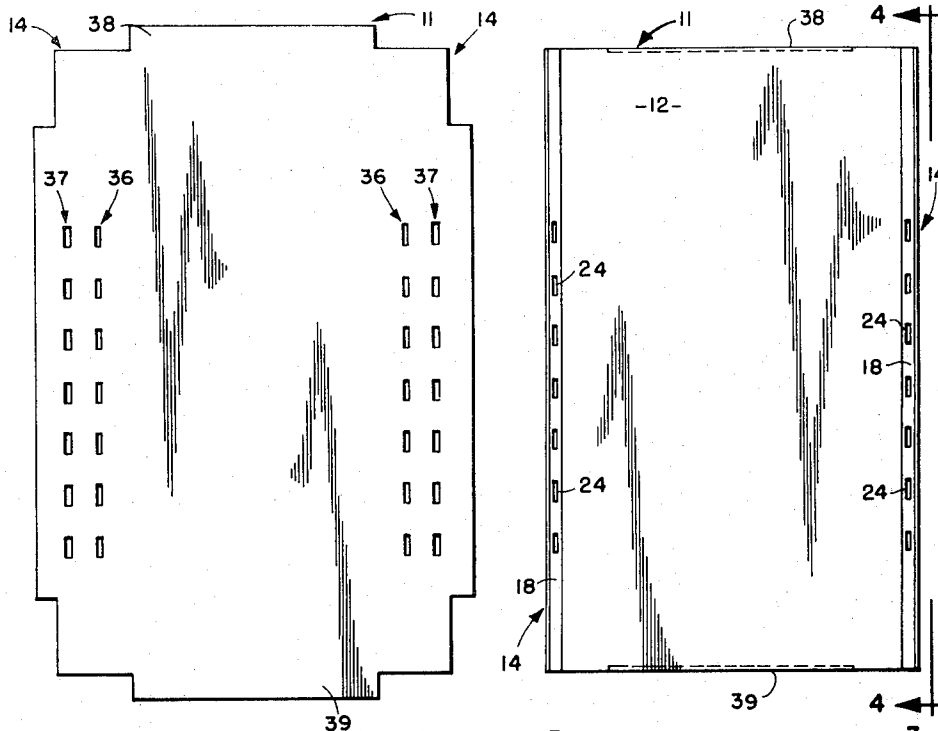


FIG. 1

FIG. 2

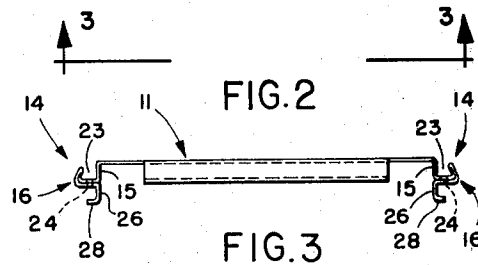


FIG. 3

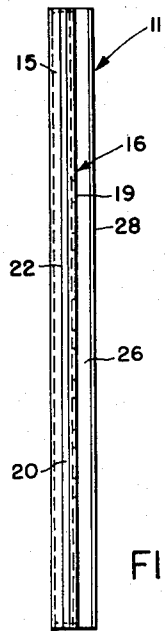


FIG. 4

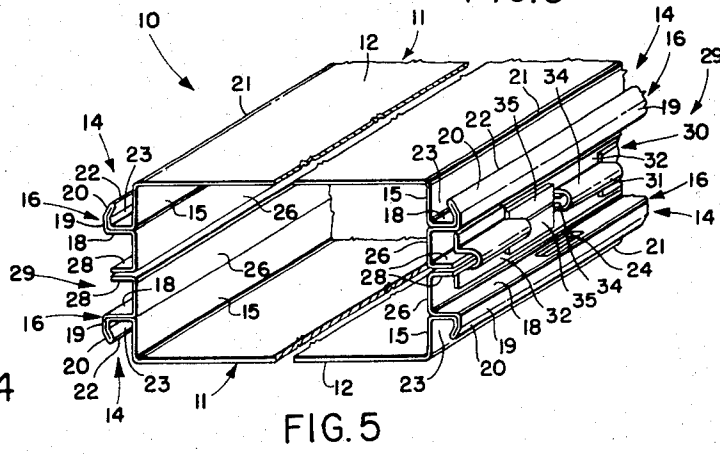
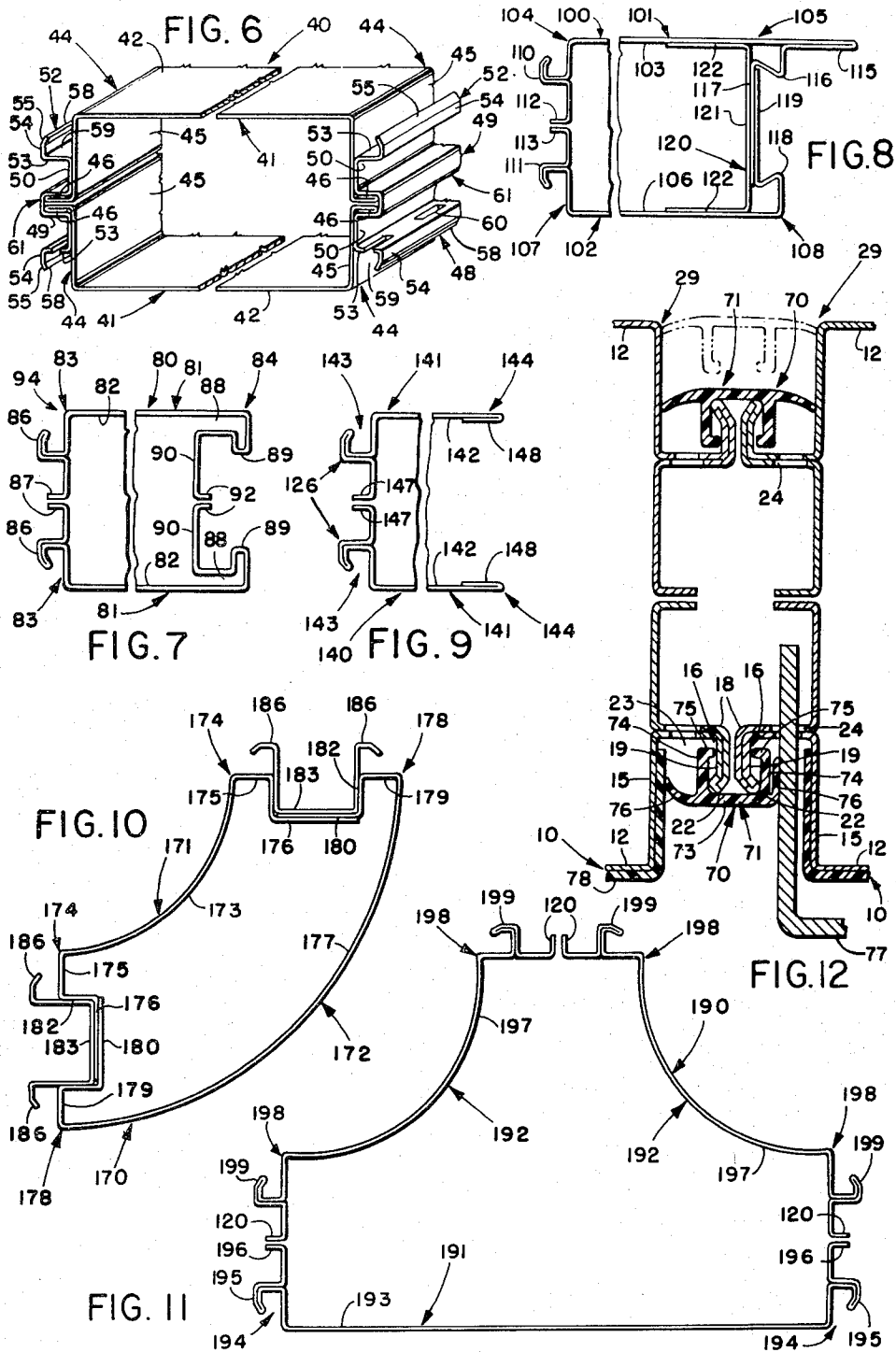


FIG. 5



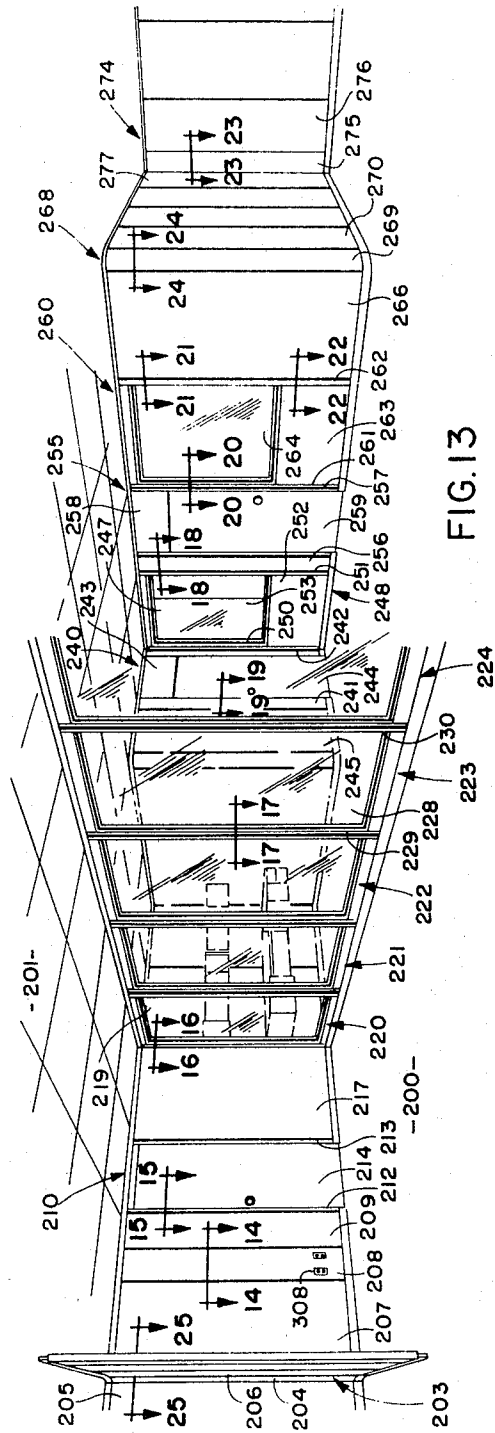


FIG. 13

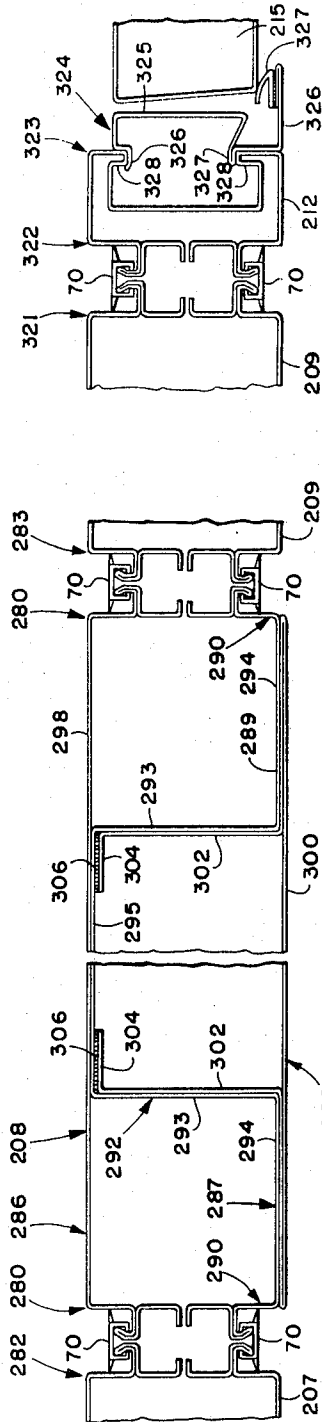


FIG. 15

FIG. 14

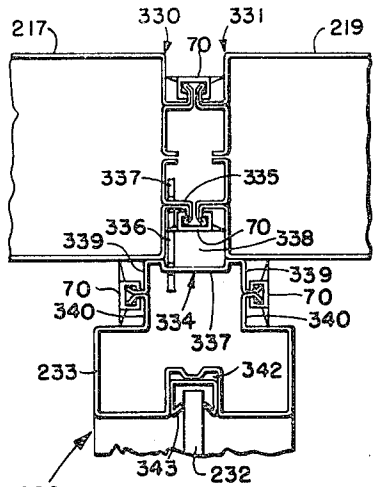


FIG. 16

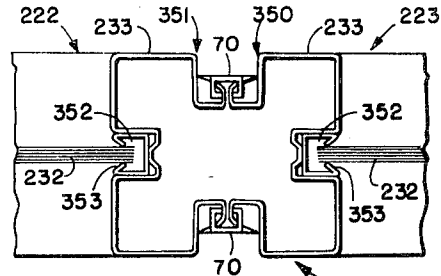


FIG. 17

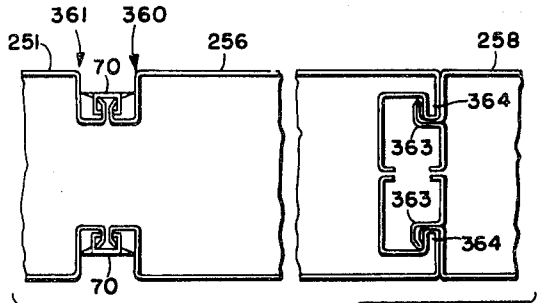


FIG. 18

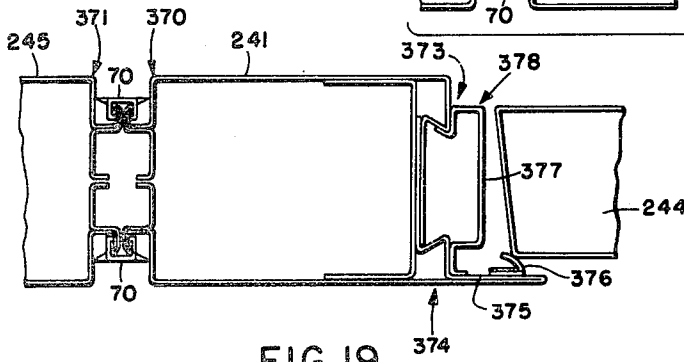


FIG. 19

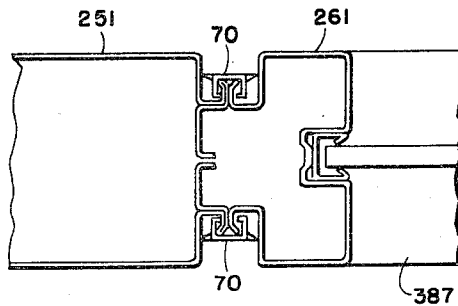


FIG. 20

Explore Litigation Insights

Docket Alarm provides insights to develop a more informed litigation strategy and the peace of mind of knowing you're on top of things.

Real-Time Litigation Alerts



Keep your litigation team up-to-date with **real-time alerts** and advanced team management tools built for the enterprise, all while greatly reducing PACER spend.

Our comprehensive service means we can handle Federal, State, and Administrative courts across the country.

Advanced Docket Research



With over 230 million records, Docket Alarm's cloud-native docket research platform finds what other services can't. Coverage includes Federal, State, plus PTAB, TTAB, ITC and NLRB decisions, all in one place.

Identify arguments that have been successful in the past with full text, pinpoint searching. Link to case law cited within any court document via Fastcase.

Analytics At Your Fingertips



Learn what happened the last time a particular judge, opposing counsel or company faced cases similar to yours.

Advanced out-of-the-box PTAB and TTAB analytics are always at your fingertips.

API

Docket Alarm offers a powerful API (application programming interface) to developers that want to integrate case filings into their apps.

LAW FIRMS

Build custom dashboards for your attorneys and clients with live data direct from the court.

Automate many repetitive legal tasks like conflict checks, document management, and marketing.

FINANCIAL INSTITUTIONS

Litigation and bankruptcy checks for companies and debtors.

E-DISCOVERY AND LEGAL VENDORS

Sync your system to PACER to automate legal marketing.