

(12) **United States Patent**
Gosling et al.

(10) **Patent No.:** **US 8,024,901 B2**
(45) **Date of Patent:** **Sep. 27, 2011**

- (54) **INTEGRATED RECONFIGURABLE WALL SYSTEM**
- (75) Inventors: **Geoff Gosling**, Calgary (CA); **Mogens Smed**, Dewinton (CA)
- (73) Assignee: **Dirtt Environmental Solutions Ltd.**, Calgary, Alberta (CA)
- (*) Notice: Subject to any disclaimer, the term of this patent is extended or adjusted under 35 U.S.C. 154(b) by 1054 days.
- (21) Appl. No.: **11/205,314**
- (22) Filed: **Aug. 17, 2005**

6,260,321	B1 *	7/2001	Rudduck	52/474
6,282,854	B1 *	9/2001	Vos et al.	52/239
6,341,457	B1 *	1/2002	Aerts et al.	52/239
6,481,168	B1 *	11/2002	Hodges et al.	52/220.7
6,920,727	B2 *	7/2005	Yu et al.	52/239
2002/0108330	A1 *	8/2002	Yu et al.	52/238.1
2002/0157335	A1	10/2002	Vos	
2003/0089057	A1 *	5/2003	Wiechecki et al.	52/238.1
2003/0221384	A1	12/2003	Burken et al.	
2004/0020137	A1 *	2/2004	Batthey et al.	52/36.1
2004/0035074	A1	2/2004	Stanescu et al.	
2004/0177573	A1 *	9/2004	Newhouse et al.	52/239
2006/0059806	A1	3/2006	Gosling et al.	
2006/0185276	A1	8/2006	Pai	

* cited by examiner

(65) **Prior Publication Data**
US 2006/0059806 A1 Mar. 23, 2006

Related U.S. Application Data

- (60) Provisional application No. 60/601,985, filed on Aug. 17, 2004.
- (51) **Int. Cl.**
E04H 1/00 (2006.01)
E04B 1/00 (2006.01)
- (52) **U.S. Cl.** **52/238.1; 52/481.2; 52/772**
- (58) **Field of Classification Search** **52/238.1, 52/239, 242, 243, 243.1, 578, 582.1, 474, 52/476, 481.2, 482, 772, 773, 781.3, 126.3; 403/286, 297, 329, 397**
See application file for complete search history.

Primary Examiner — Khoi Tran
Assistant Examiner — Jason Holloway
(74) *Attorney, Agent, or Firm* — Welsh Flaxman & Gitler LLC

(56) **References Cited**

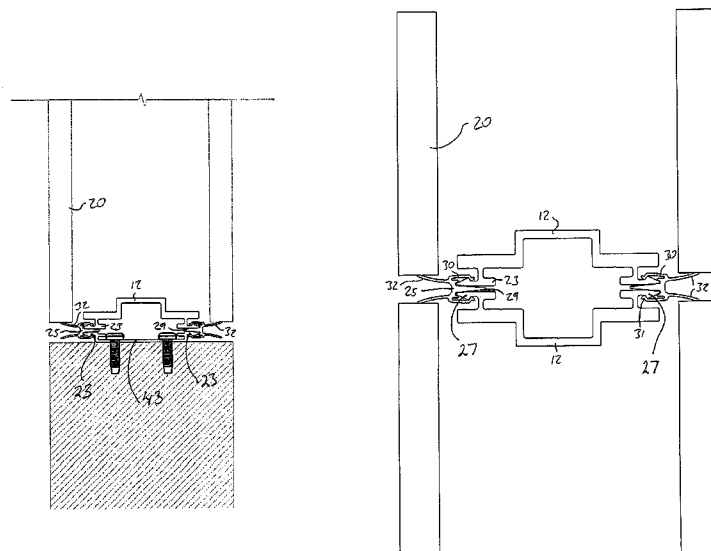
U.S. PATENT DOCUMENTS

5,600,926	A *	2/1997	Ehrlich	52/239
6,250,032	B1 *	6/2001	Davis et al.	52/239

(57) **ABSTRACT**

A movable reconfigurable wall system having at least one module having a front and rear surface, the at least one module having: vertical end frames disposed at least at its side edges, each the vertical end frame having a vertically extending flange directed toward the front surface and a vertically extending flange directed toward the rear surface; a plurality of horizontal stringers affixed between the pair of vertical end frames; and an aesthetic surface affixed to the stringers; and a removable connecting strip, the connecting strip adapted to affix about one of the two flanges on one of the vertical end frames and join the one of the two flanges to a corresponding flange on one of a second module, a wall bracket, a finishing trim or a connection post.

25 Claims, 21 Drawing Sheets



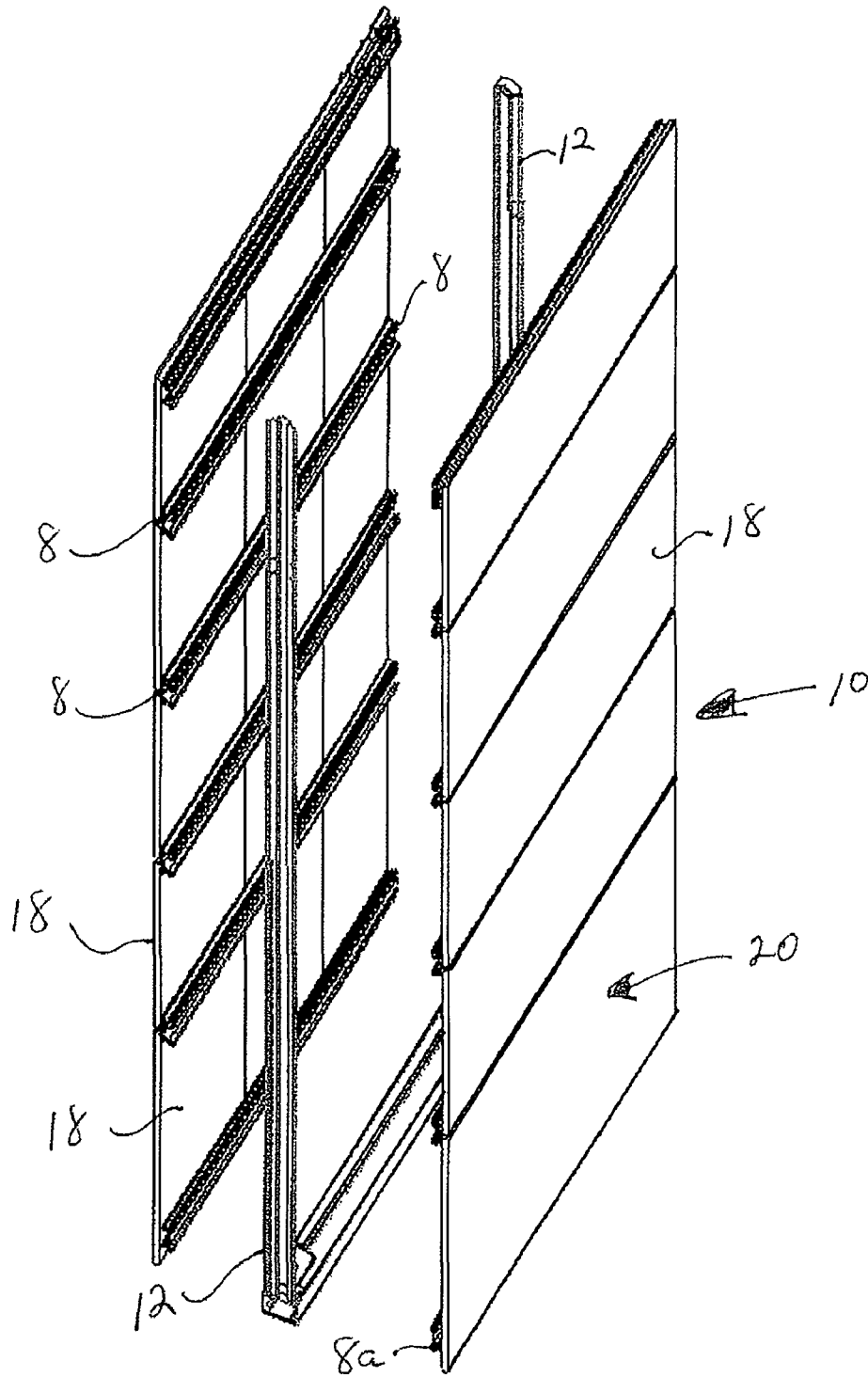


Figure 1

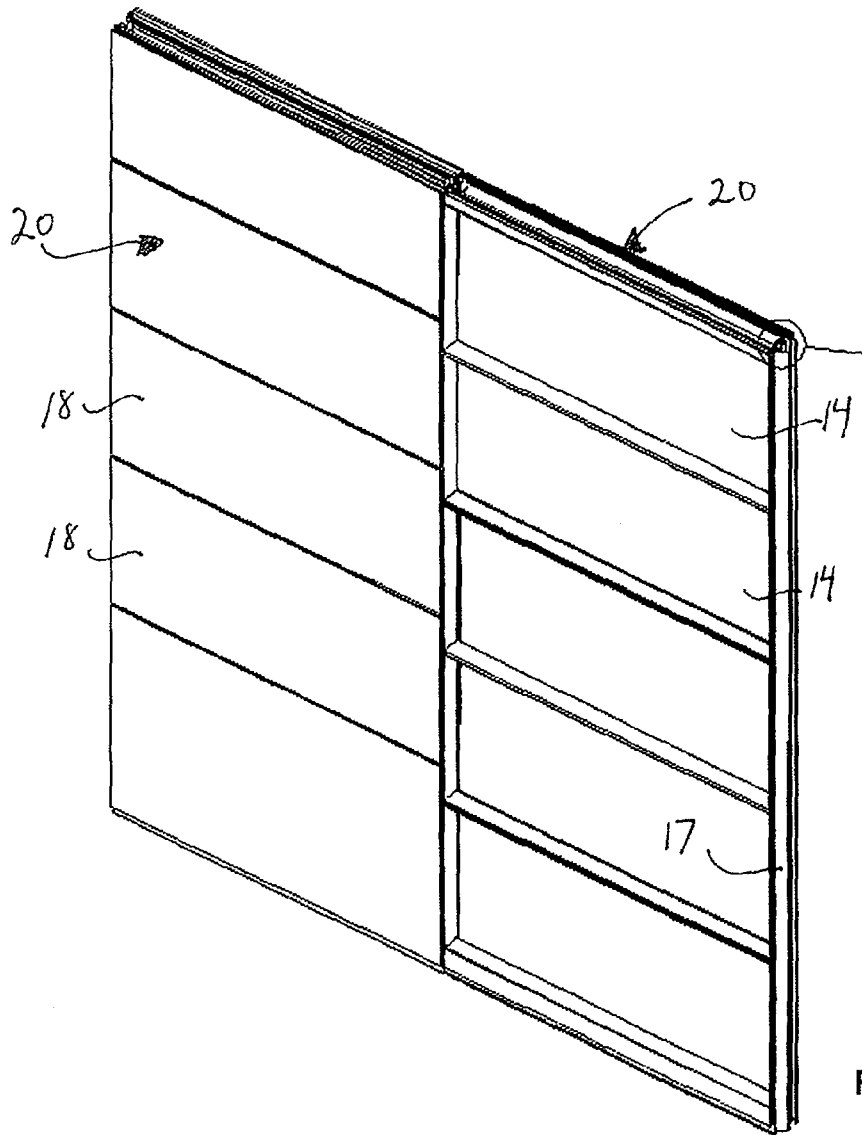


Figure 2

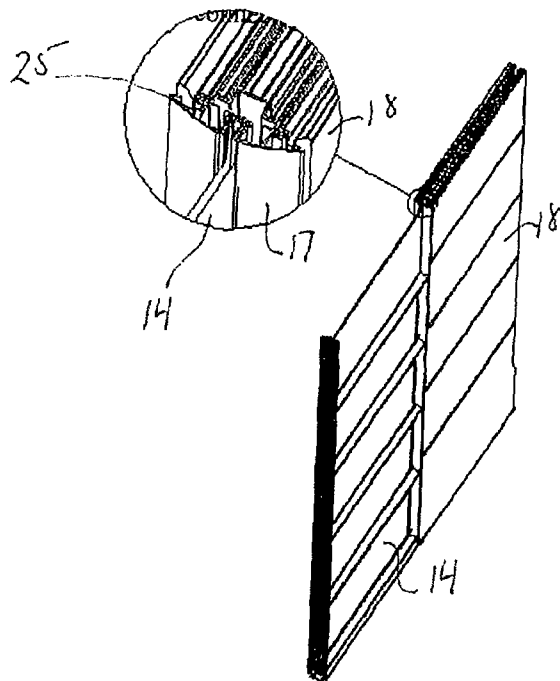


Figure 3

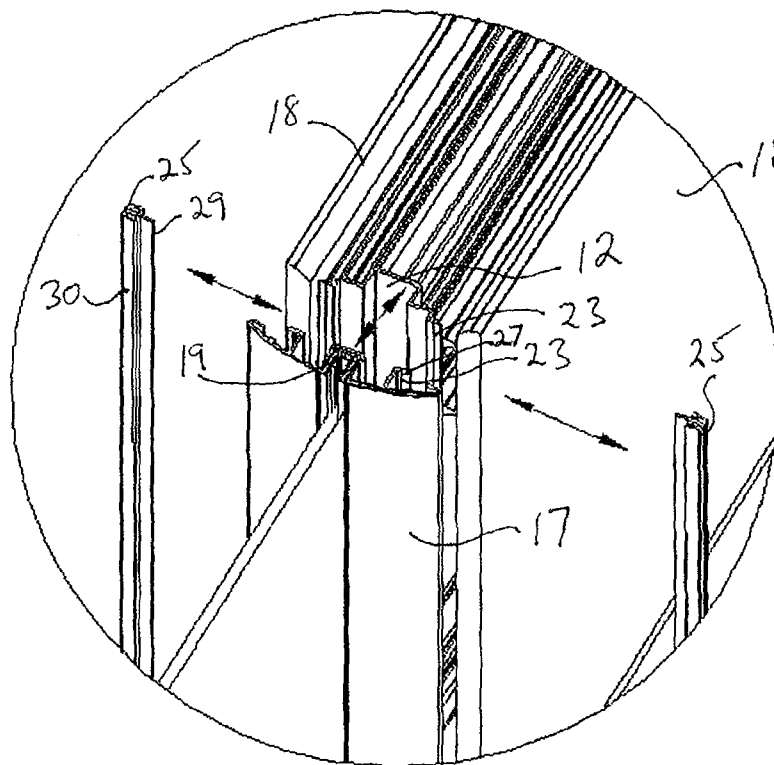


Figure 4

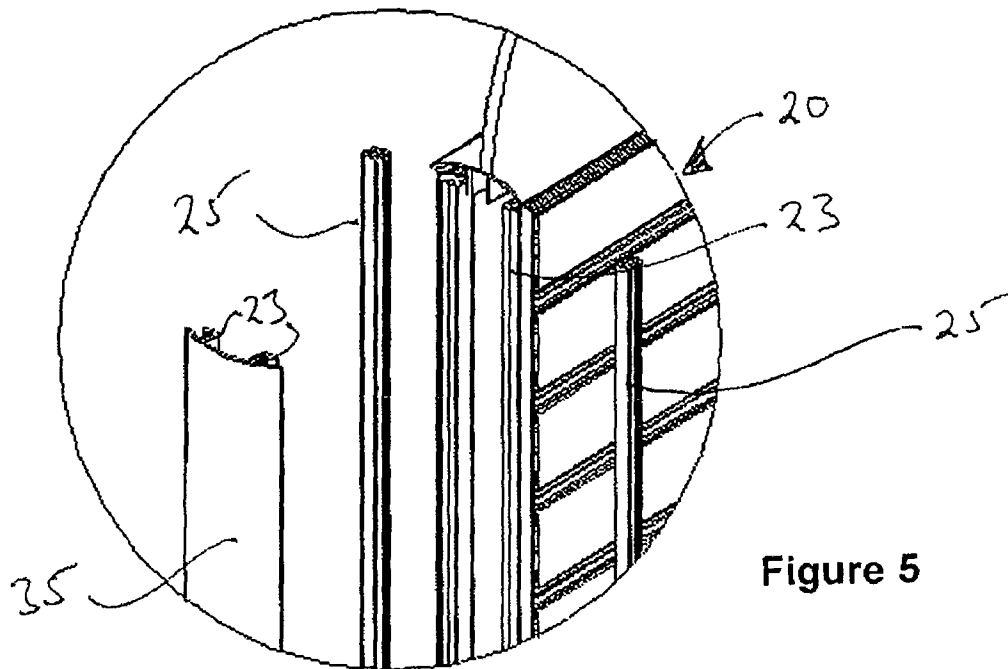


Figure 5

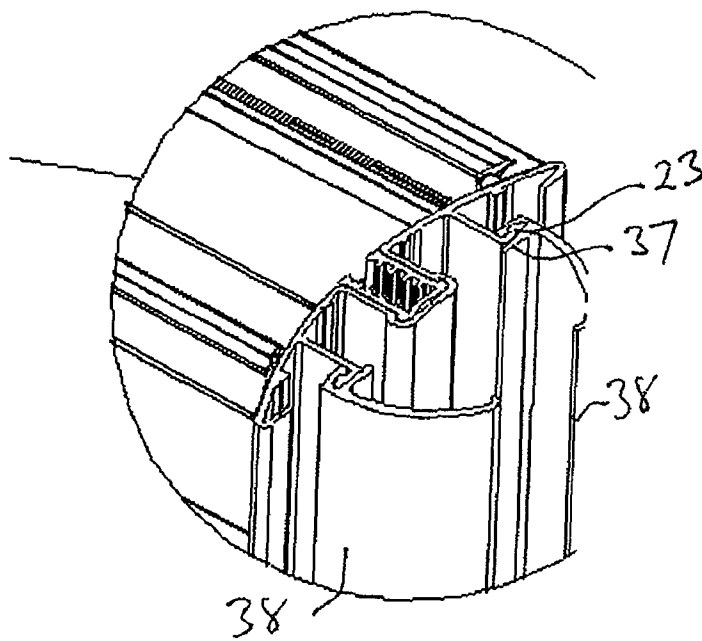


Figure 6

Explore Litigation Insights

Docket Alarm provides insights to develop a more informed litigation strategy and the peace of mind of knowing you're on top of things.

Real-Time Litigation Alerts



Keep your litigation team up-to-date with **real-time alerts** and advanced team management tools built for the enterprise, all while greatly reducing PACER spend.

Our comprehensive service means we can handle Federal, State, and Administrative courts across the country.

Advanced Docket Research



With over 230 million records, Docket Alarm's cloud-native docket research platform finds what other services can't. Coverage includes Federal, State, plus PTAB, TTAB, ITC and NLRB decisions, all in one place.

Identify arguments that have been successful in the past with full text, pinpoint searching. Link to case law cited within any court document via Fastcase.

Analytics At Your Fingertips



Learn what happened the last time a particular judge, opposing counsel or company faced cases similar to yours.

Advanced out-of-the-box PTAB and TTAB analytics are always at your fingertips.

API

Docket Alarm offers a powerful API (application programming interface) to developers that want to integrate case filings into their apps.

LAW FIRMS

Build custom dashboards for your attorneys and clients with live data direct from the court.

Automate many repetitive legal tasks like conflict checks, document management, and marketing.

FINANCIAL INSTITUTIONS

Litigation and bankruptcy checks for companies and debtors.

E-DISCOVERY AND LEGAL VENDORS

Sync your system to PACER to automate legal marketing.