

# CONSTRUCTIVE SOLUTIONS™



## Creates Intelligent Workspace

SMED is a fiercely client focused company that goes to market with an unparalleled range of products and services called Constructive Solutions . It includes architectural products - flooring and walls - plus furniture, lighting, accessories and seating.

Constructive Solutions™ also includes hundreds of dedicated professionals who come to work everyday with the mission of achieving 100% customer satisfaction 100% of the time.

LifeSPACE , as part of Constructive Solutions , creates intelligent workspace.

**S M E D**  
INTERNATIONAL

10 Smed Lane S.E. Calgary, Alberta T2C 4T5  
Canada / USA 1-800 661-3169

[www.smednet.com](http://www.smednet.com)

**The Future of Interior Construction**

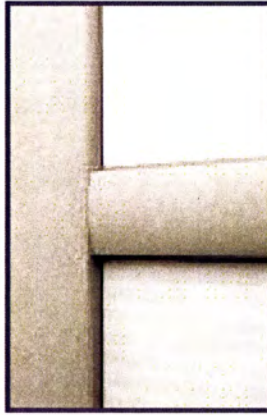


**LifeSPACE™**

**S M E D**  
INTERNATIONAL

**DOCKET**  
**A L A R M**

Find authenticated court documents without watermarks at [docketalarm.com](http://docketalarm.com).



## We started the revolution

first

We're the first to make a movable wall that looks monolithic.

We're the first to offer complete design freedom.

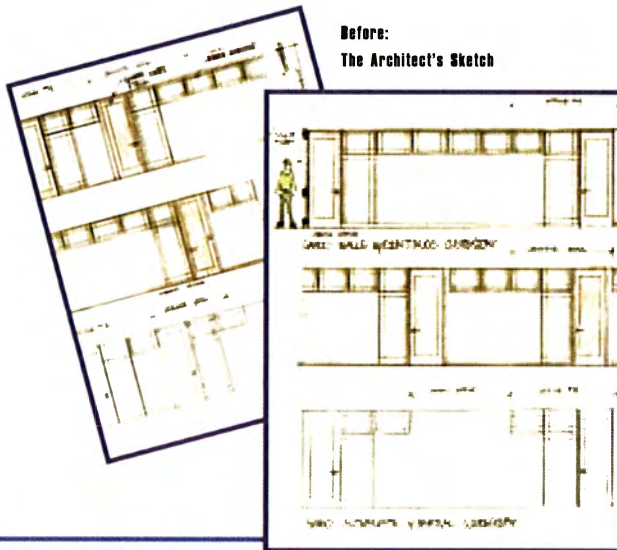
We're the first to provide a total acoustic solution.

And, we're the first to combine quality materials with the ability to integrate everything from electrical cabling to plumbing.

Is it any wonder that in a wall industry that has been around for more than 70 years, LifeSPACE™ Walls have become the sales leader in less than seven years.

Look ahead with LifeSPACE™.





We help create a vision. Clients aren't forced to choose from a selection of pre-manufactured products. With SMED, design the wall you want; be it wood, glass or aluminum and we'll build it.

Choose from thousands of renderings or designs to help create your own look.

LifeSPACE™ has a unique post-cap to connect panels; providing a visually seamless, clean and monolithic look.

Any walls, doors or hardware ordered today can be reordered. All the products we design are compatible with what we've designed in the past.

We use the best quality materials; aluminum frames, wood solids and architectural grade veneers.

SMED's reputation for quality walls is unmatched by any other wall, movable or not.

## Superior Aesthetics



Fabulous



## More than Movable

function

LifeSPACE™ Walls are fully modular. They're built in increments of 1/16" to fit your building, so there's no wasted space or panels.

There is no fixed sequence with LifeSPACE™. Take out a door. Take out a window. Take out a panel. It won't affect the rest of the wall.

Save space without sacrificing privacy. Our 10X10 office uses a sliding barn or pocket door to make the most of valuable real estate.

The walls integrate with the rest of your environment - Nexus™ Flooring, cabling, electrical, lighting, accessories and furniture (yours, SMED's or someone else's).

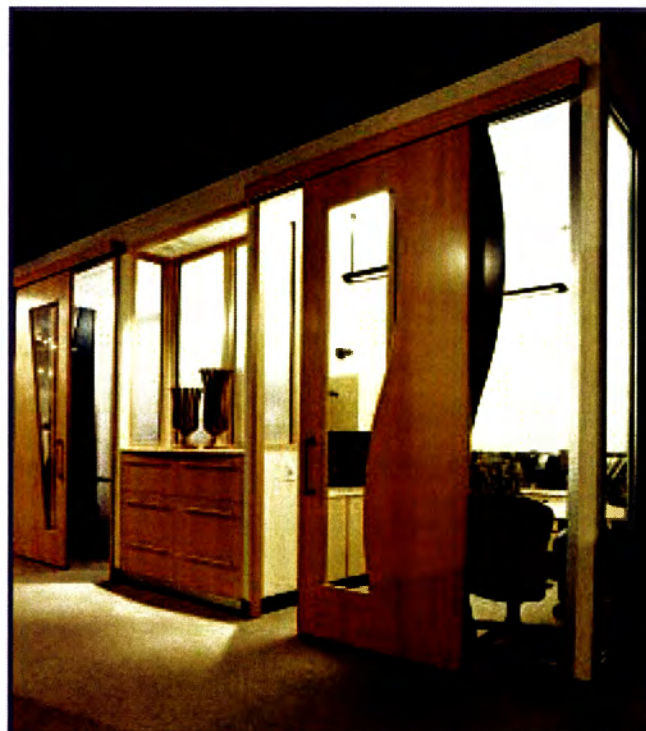
LifeSPACE™ Walls are easily repaired, refreshed or cut to fit a new location.

They can accommodate voice, data, and electrical cabling.

### Acoustic Solutions

Gypsum board and acoustic batting are part of our Acoustic Solutions.

A study by SMED, Armstrong World Industries and Dynasound suggests the entire environment must work together as an integrated unit to ensure speech doesn't travel from room to room.



# Explore Litigation Insights

Docket Alarm provides insights to develop a more informed litigation strategy and the peace of mind of knowing you're on top of things.

## Real-Time Litigation Alerts



Keep your litigation team up-to-date with **real-time alerts** and advanced team management tools built for the enterprise, all while greatly reducing PACER spend.

Our comprehensive service means we can handle Federal, State, and Administrative courts across the country.

## Advanced Docket Research



With over 230 million records, Docket Alarm's cloud-native docket research platform finds what other services can't. Coverage includes Federal, State, plus PTAB, TTAB, ITC and NLRB decisions, all in one place.

Identify arguments that have been successful in the past with full text, pinpoint searching. Link to case law cited within any court document via Fastcase.

## Analytics At Your Fingertips



Learn what happened the last time a particular judge, opposing counsel or company faced cases similar to yours.

Advanced out-of-the-box PTAB and TTAB analytics are always at your fingertips.

## API

Docket Alarm offers a powerful API (application programming interface) to developers that want to integrate case filings into their apps.

## LAW FIRMS

Build custom dashboards for your attorneys and clients with live data direct from the court.

Automate many repetitive legal tasks like conflict checks, document management, and marketing.

## FINANCIAL INSTITUTIONS

Litigation and bankruptcy checks for companies and debtors.

## E-DISCOVERY AND LEGAL VENDORS

Sync your system to PACER to automate legal marketing.