

[54] **DIAGNOSTIC DATA RECORDER**
 [75] **Inventors:** James F. Neely, Washington; James E. Krass, Jr., Grosse Pointe Woods, both of Mich.
 [73] **Assignee:** Micro Processor Systems, Inc., Sterling Heights, Mich.
 [21] **Appl. No.:** 588,004
 [22] **Filed:** Mar. 9, 1984
 [51] **Int. Cl.⁴** G06F 13/00
 [52] **U.S. Cl.** 179/2 A; 360/6; 360/53; 340/52 F; 364/431.03
 [58] **Field of Search** 179/2 A, 2 AM, 2 DP, 179/2 R; 346/14 MR, 33 R; 360/6, 40, 48, 53; 340/52 F, 53, 52 R, 870.16-870.18; 364/424, 431.01-431.12, 551; 371/53

4,236,215 11/1980 Callahan et al. .
 4,246,566 1/1981 Endo et al. .
 4,258,421 3/1981 Juhasz .
 4,267,569 5/1981 Baumann et al. .
 4,270,174 5/1981 Karlin et al. .
 4,271,402 6/1981 Kastura et al. .
 4,277,772 7/1981 Kastura et al. .
 4,293,842 10/1981 Tanaka et al. .
 4,296,409 10/1981 Whitaker et al. .
 4,297,693 10/1981 Parsons .
 4,307,374 12/1981 Bode et al. .
 4,309,900 1/1982 Kreft et al. .
 4,317,106 2/1982 Huber .
 4,317,364 3/1982 Asano et al. .
 4,328,546 5/1982 Kreft et al. .
 4,338,599 7/1982 Leininger .
 4,361,870 11/1982 D'Agostini et al. .
 4,504,831 3/1985 Jahr et al. 179/2 AM X

Primary Examiner—James L. Dwyer
Attorney, Agent, or Firm—Harness, Dickey & Pierce

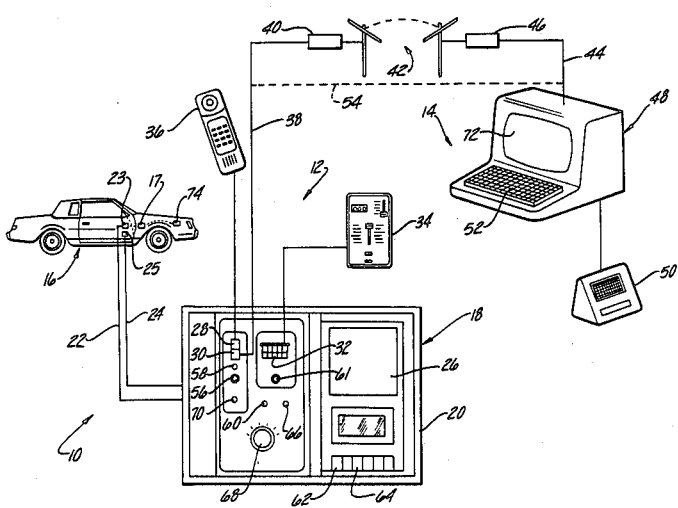
[56] **References Cited**
U.S. PATENT DOCUMENTS

- 3,048,034 8/1962 Schultz .
- 3,409,252 9/1966 Miller .
- 3,469,252 9/1969 Bet .
- 3,626,367 12/1971 Howard et al. .
- 3,893,108 7/1975 McBride, Jr. et al. .
- 3,956,753 5/1976 Armstrong et al. .
- 4,031,363 6/1977 Freeman et al. .
- 4,067,061 1/1978 Juhasz .
- 4,072,850 2/1978 McGlynn .
- 4,113,980 9/1978 Bell .
- 4,125,894 11/1978 Cashel et al. .
- 4,137,553 1/1979 Tokitsu et al. .
- 4,149,148 4/1979 Miller et al. .
- 4,164,763 8/1979 Briccetti et al. .
- 4,179,740 12/1979 Malin .
- 4,188,618 2/1980 Weisbart .
- 4,194,349 3/1980 Lane .
- 4,216,779 8/1980 Squires et al. .
- 4,234,921 11/1980 Kinoshita et al. .

[57] **ABSTRACT**

A vehicular diagnostic system is described which generally comprises a portable communications control station and a remote data processing station. The control station includes a portable communications controller which is adapted to be connected to a vehicle data terminal capable of supplying parameter data monitored by a vehicle computer and connected to a source of electrical power in the vehicle. The controller also includes the circuitry required to enable the flow of the parameter data through the vehicle data terminal, to compose the data into a predetermined data stream, to record this data stream on magnetic tape, and transmit live or recorded data through a telephone line to the remote data processing station.

20 Claims, 7 Drawing Figures
Microfiche Appendix Included
 (2 Microfiche, 103 Pages)



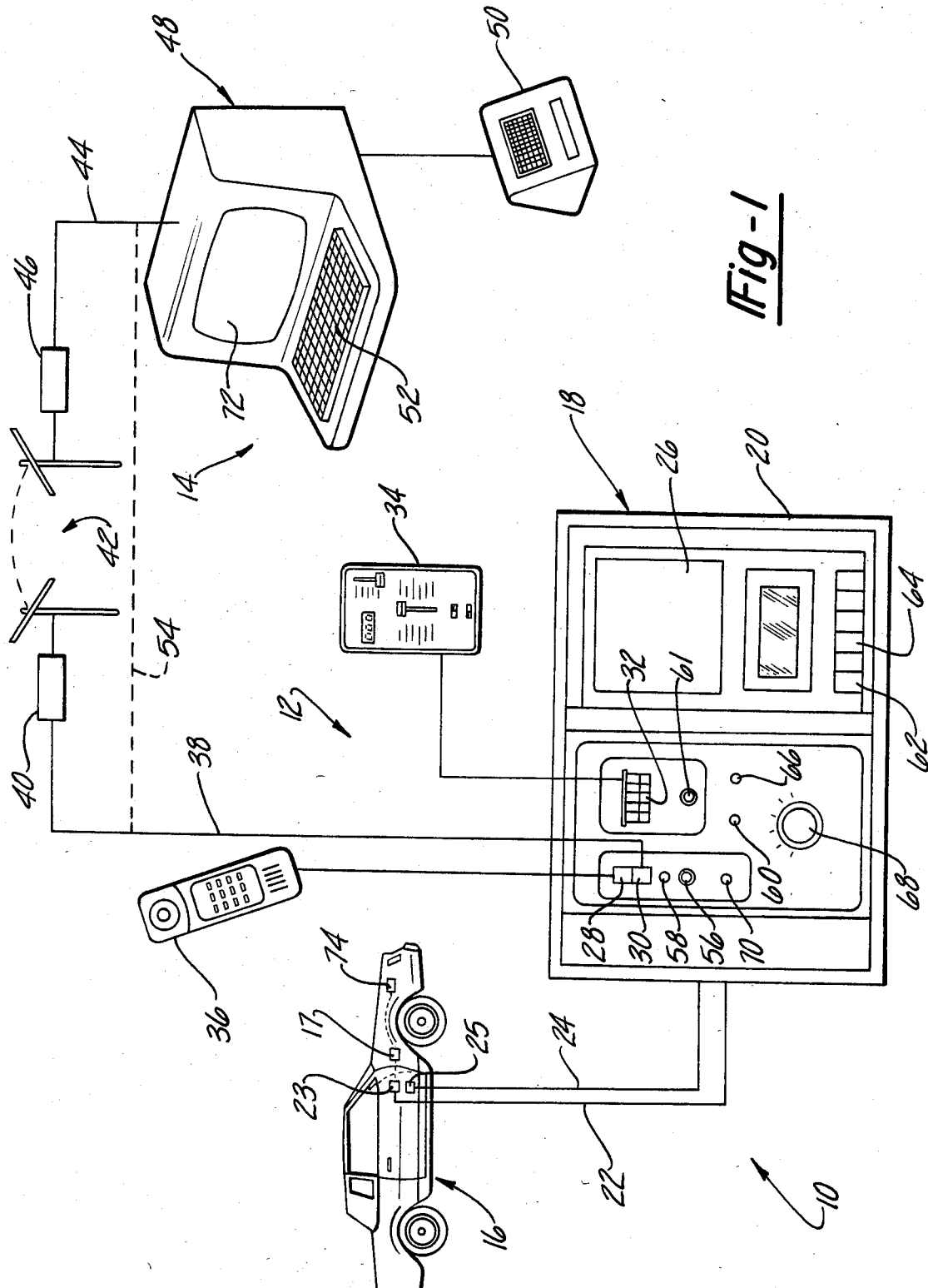


Fig-1

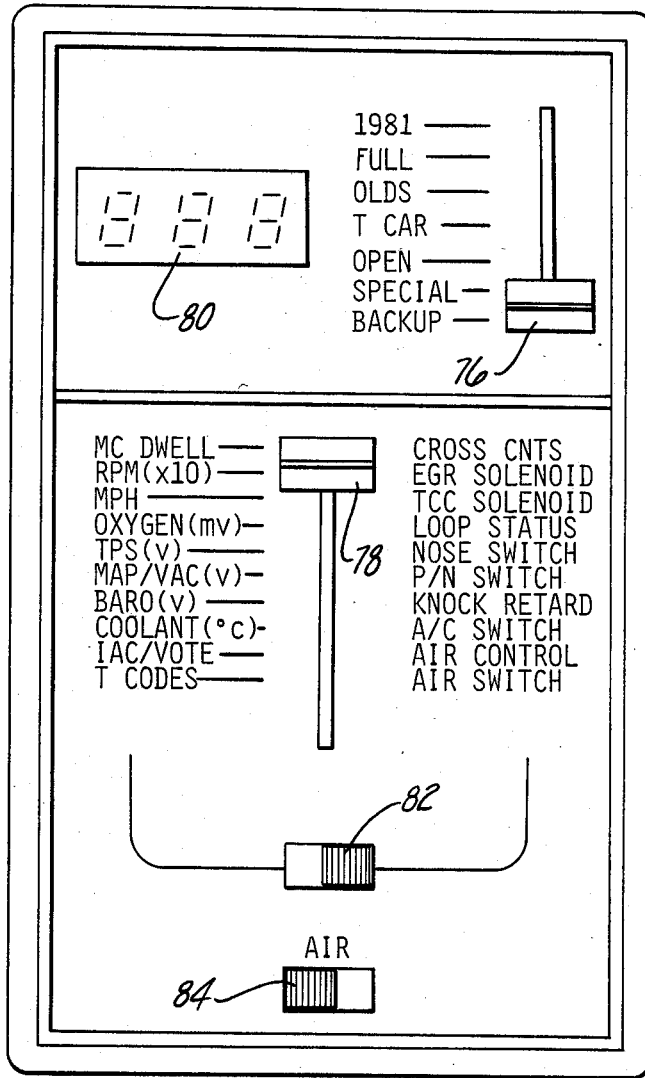
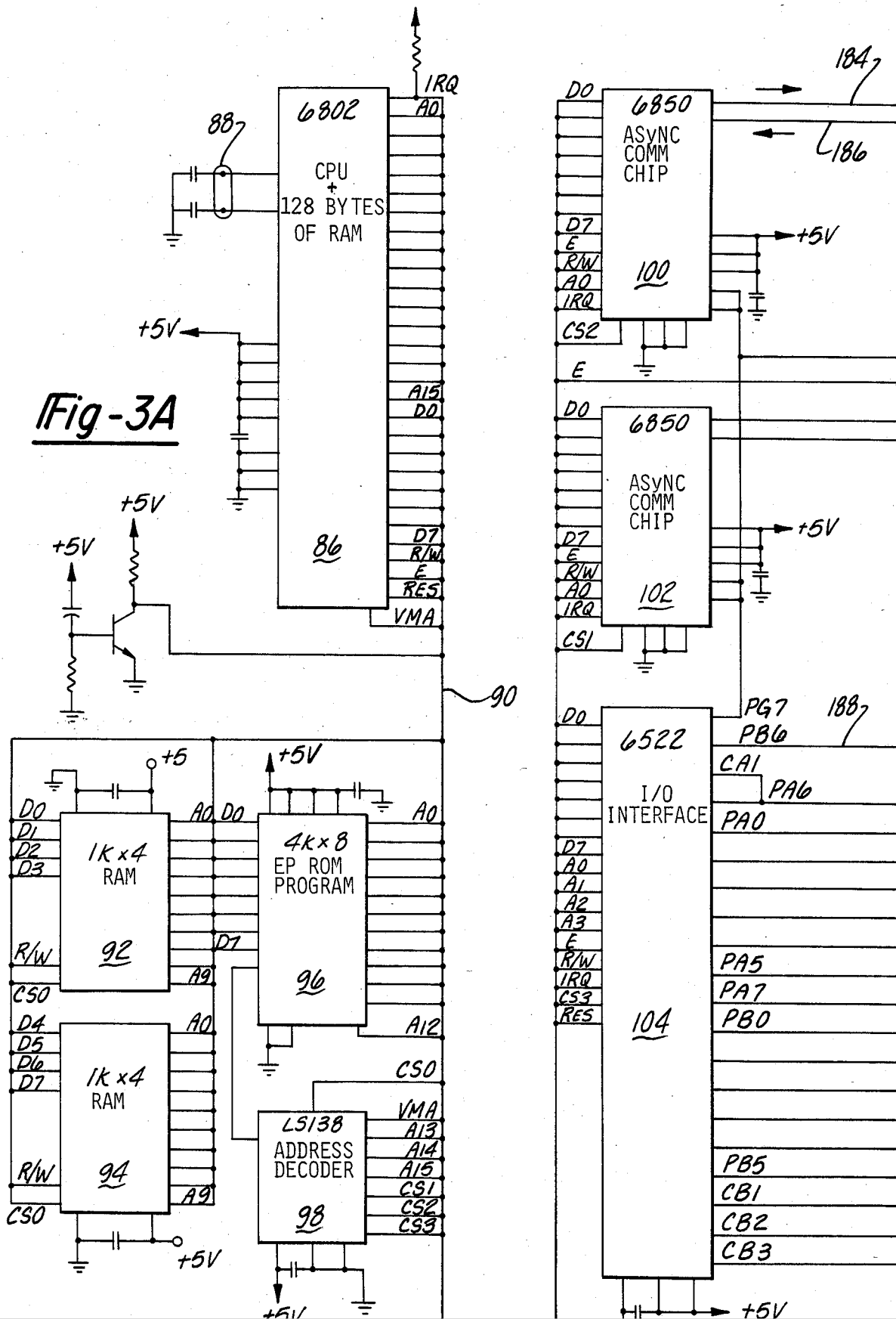


Fig-2



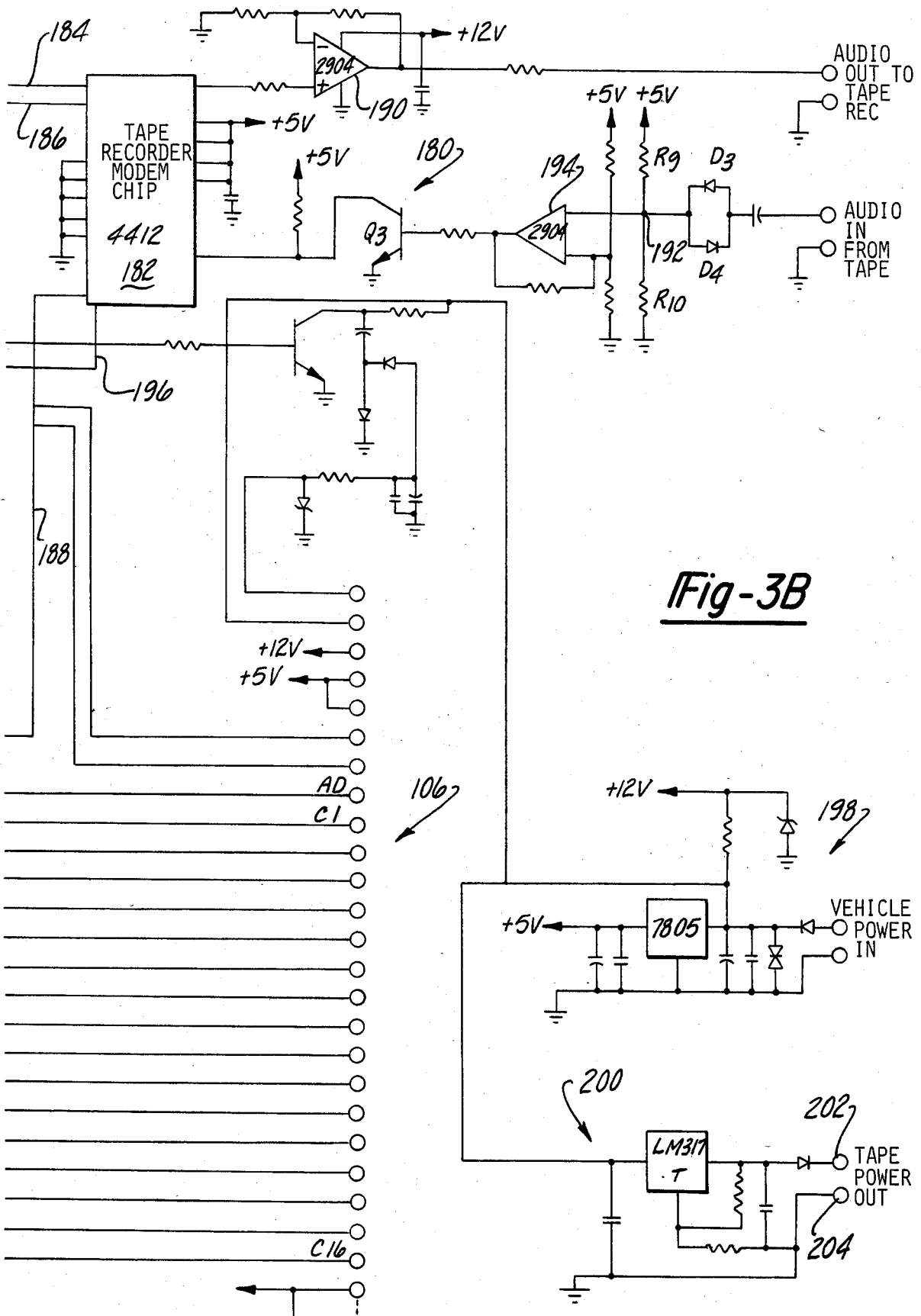


Fig-3B

Explore Litigation Insights

Docket Alarm provides insights to develop a more informed litigation strategy and the peace of mind of knowing you're on top of things.

Real-Time Litigation Alerts



Keep your litigation team up-to-date with **real-time alerts** and advanced team management tools built for the enterprise, all while greatly reducing PACER spend.

Our comprehensive service means we can handle Federal, State, and Administrative courts across the country.

Advanced Docket Research



With over 230 million records, Docket Alarm's cloud-native docket research platform finds what other services can't. Coverage includes Federal, State, plus PTAB, TTAB, ITC and NLRB decisions, all in one place.

Identify arguments that have been successful in the past with full text, pinpoint searching. Link to case law cited within any court document via Fastcase.

Analytics At Your Fingertips



Learn what happened the last time a particular judge, opposing counsel or company faced cases similar to yours.

Advanced out-of-the-box PTAB and TTAB analytics are always at your fingertips.

API

Docket Alarm offers a powerful API (application programming interface) to developers that want to integrate case filings into their apps.

LAW FIRMS

Build custom dashboards for your attorneys and clients with live data direct from the court.

Automate many repetitive legal tasks like conflict checks, document management, and marketing.

FINANCIAL INSTITUTIONS

Litigation and bankruptcy checks for companies and debtors.

E-DISCOVERY AND LEGAL VENDORS

Sync your system to PACER to automate legal marketing.