



US005949974A

# United States Patent [19]

[11] Patent Number: **5,949,974**

Ewing et al.

[45] Date of Patent: **Sep. 7, 1999**

[54] **SYSTEM FOR READING THE STATUS AND FOR CONTROLLING THE POWER SUPPLIES OF APPLIANCES CONNECTED TO COMPUTER NETWORKS**

5,585,678	12/1996	Dijk et al.	307/112
5,652,893	7/1997	Ben-Meir et al.	395/750.02
5,761,084	6/1998	Edwards	364/528.28
5,781,434	7/1998	Tobita et al.	364/184

### OTHER PUBLICATIONS

W. Richard Stevens, "TCP/IP Illustrated, vol. 1 —The Protocols", pp. 359–361, 1994.

Michael Slater, "Microprocessor-Based Design—A Comprehensive Guide to Hardware Design", pp. 19–24, 1989.

Peter Drake, "Using SNMP to Manage Networks", pp. 2/1–2/4, 1991.

Primary Examiner—Zarni Maung

Assistant Examiner—Andrew Caldwell

Attorney, Agent, or Firm—Richard B. Main

[76] Inventors: **Carrell W. Ewing**, 585 Washington, Palo Alto, Calif. 94301; **Andrew J. Cleveland**, 12467 Creek View Ct., San Martin, Calif. 95046

[21] Appl. No.: **08/685,436**

[22] Filed: **Jul. 23, 1996**

[51] Int. Cl.<sup>6</sup> ..... **G06F 15/16**; G06F 1/26

[52] U.S. Cl. .... **395/200.32**; 395/200.53; 395/750.08

[58] Field of Search ..... 340/644, 646, 340/310.01, 825.5; 395/200.32, 200.53, 200.54

### [57] ABSTRACT

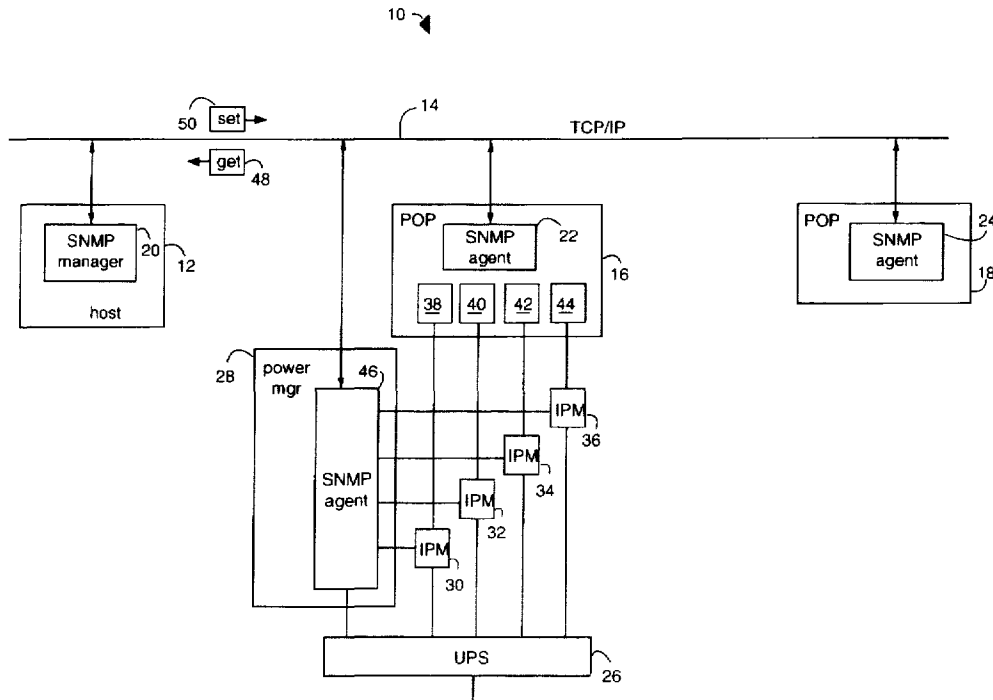
A SNMP network comprises a power manager with a SNMP agent in TCP/IP communication over a network with a SNMP network manager. The power manager is connected to control several intelligent power modules each able to independently control the on/off power to several inter-networking devices in an equipment rack at a common remote node, e.g., a point-of-presence site. Power-on and load sensors within each intelligent power module are able to report the power status of each inter-networking device to the SNMP network manager with MIB variables in response to GET commands. The SNMP network manager is further able to reboot each inter-networking device by cycling the power on/off to its respective intelligent power module with the SET command provided in conventional SNMP management applications.

### [56] References Cited

#### U.S. PATENT DOCUMENTS

4,101,878	7/1978	Shimizu et al.	340/310.01
4,495,568	1/1985	Gilbert et al.	395/182.2
4,709,318	11/1987	Gephart et al.	363/37
4,780,714	10/1988	Moustakas et al.	340/825.5
4,937,561	6/1990	Sasaki et al.	340/646
5,374,922	12/1994	Ebersohl	340/644
5,412,645	5/1995	Younkin et al.	370/365
5,481,730	1/1996	Brown et al.	395/750.08
5,485,576	1/1996	Fee et al.	395/185.09
5,495,607	2/1996	Pisello et al.	707/10
5,506,573	4/1996	Ewing et al.	340/644
5,561,769	10/1996	Kumar et al.	395/200.32

12 Claims, 4 Drawing Sheets



Baritan v. Server Technology

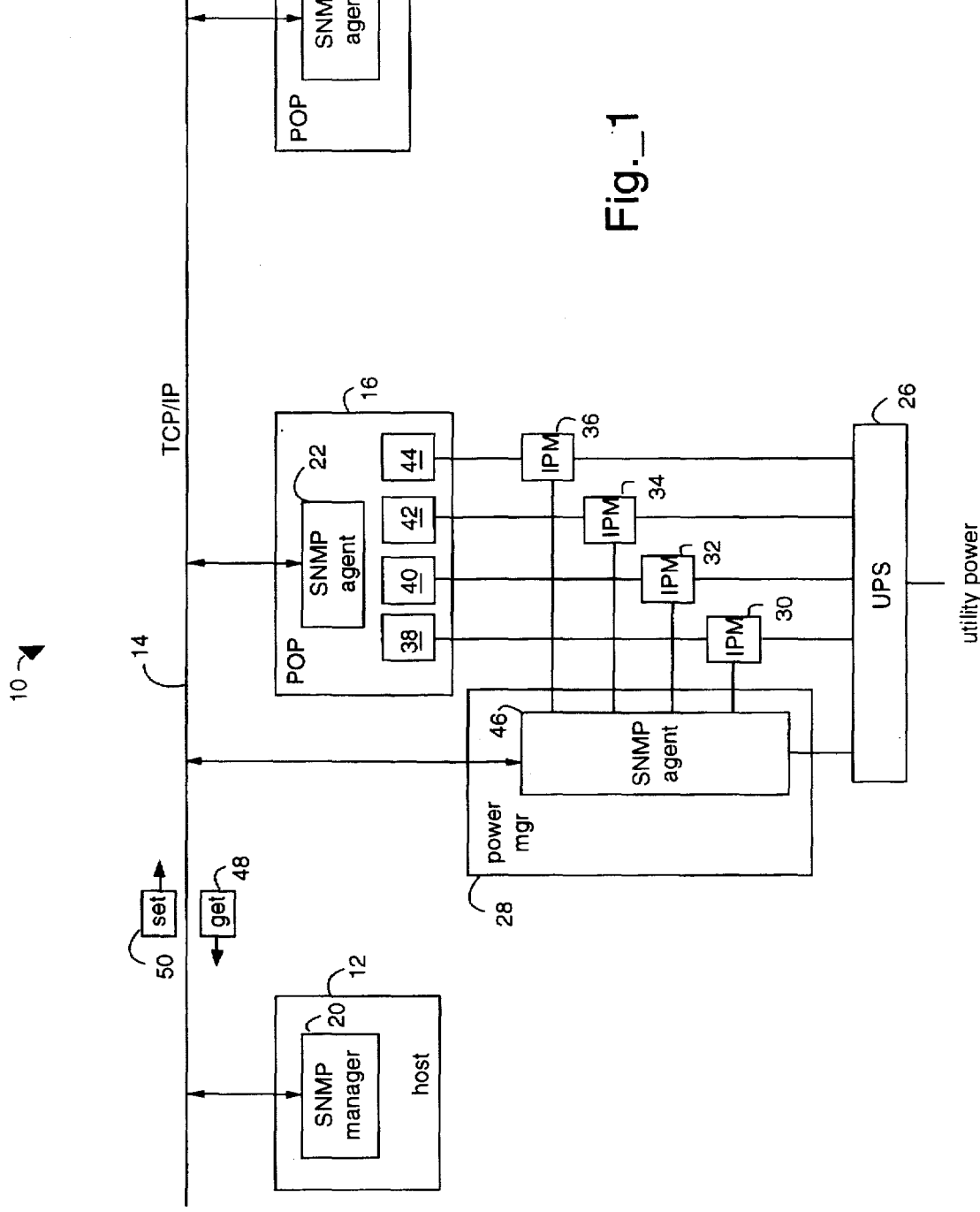
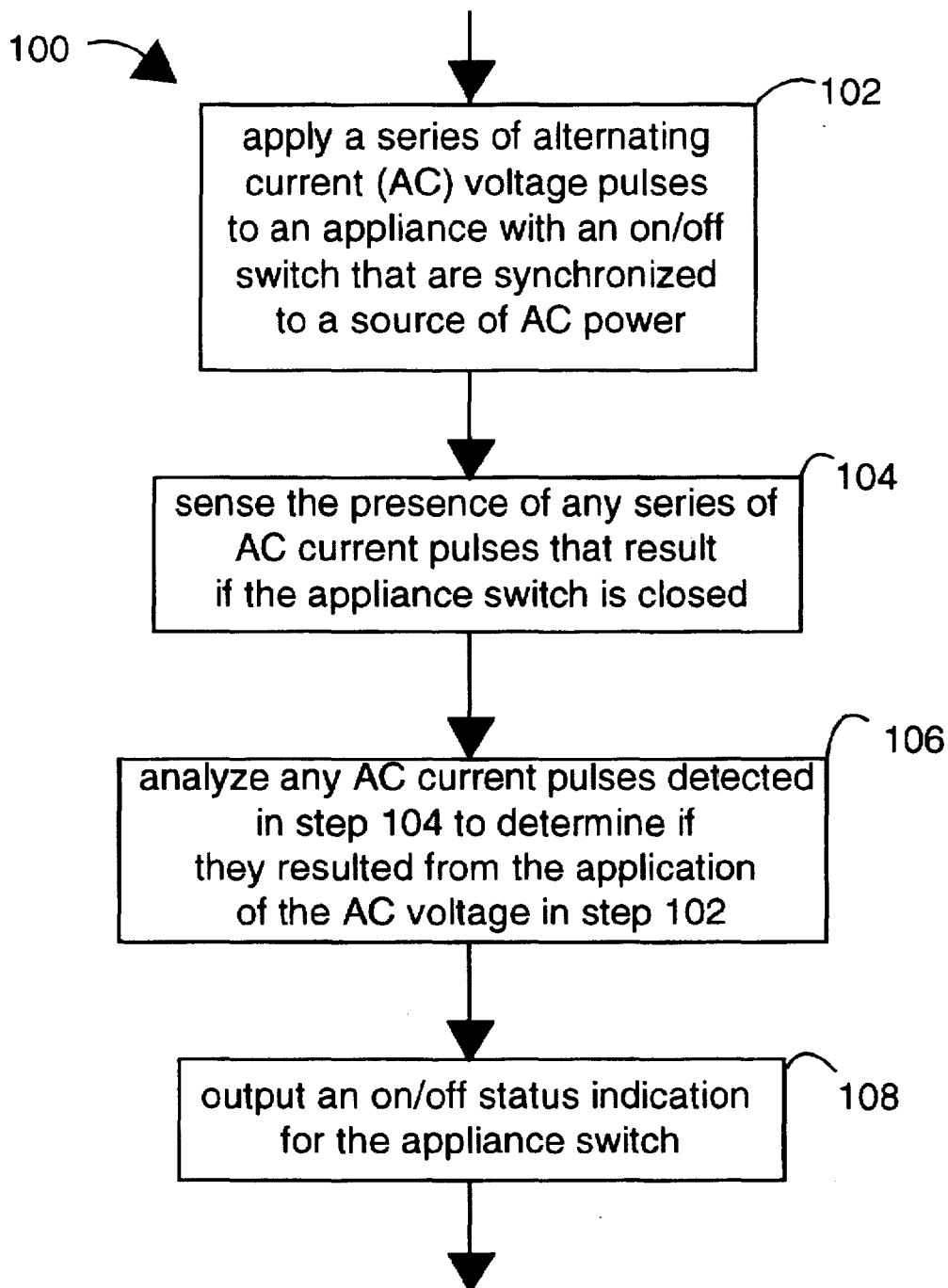


Fig. 1

Fig. 2



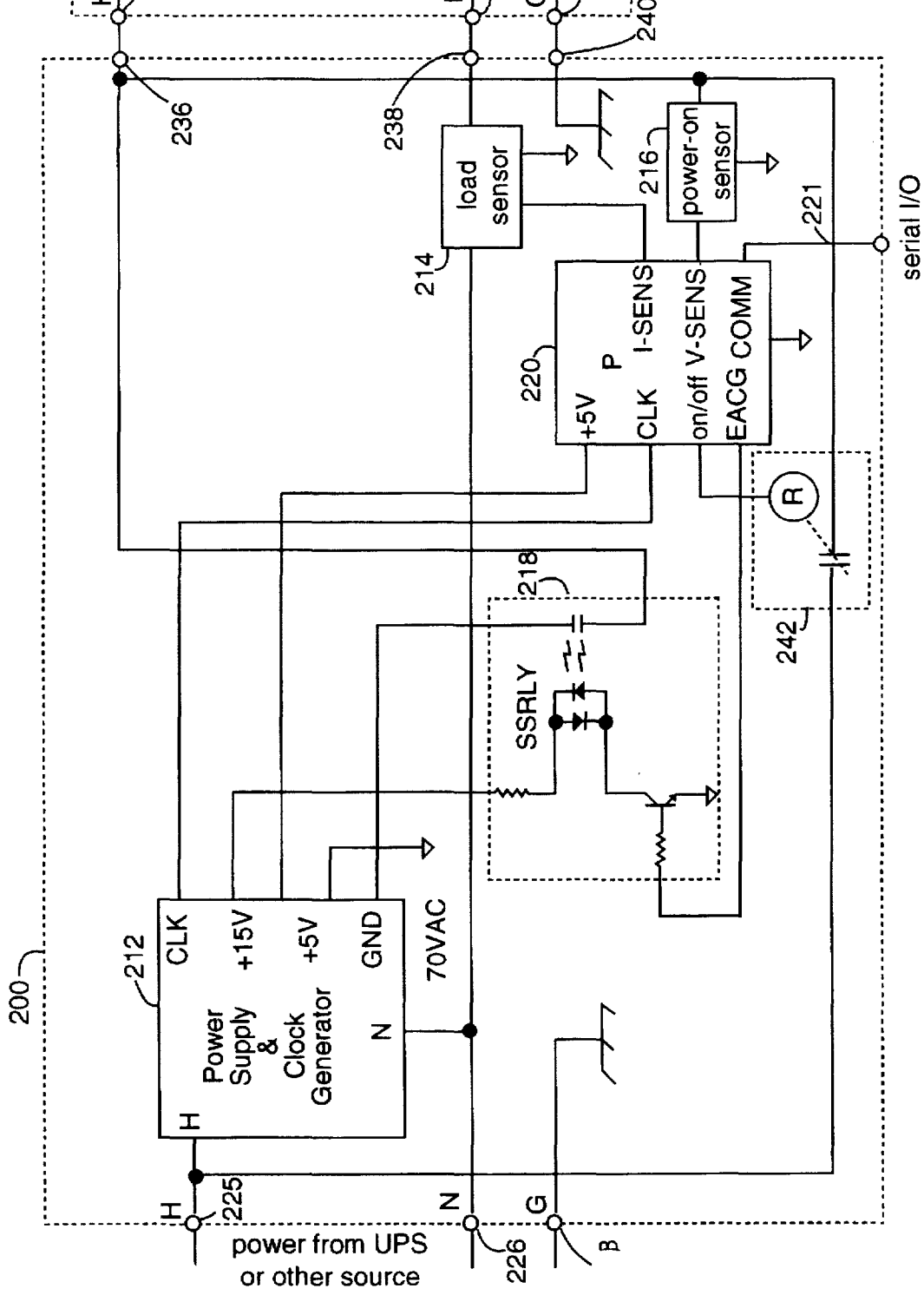


Fig.\_4

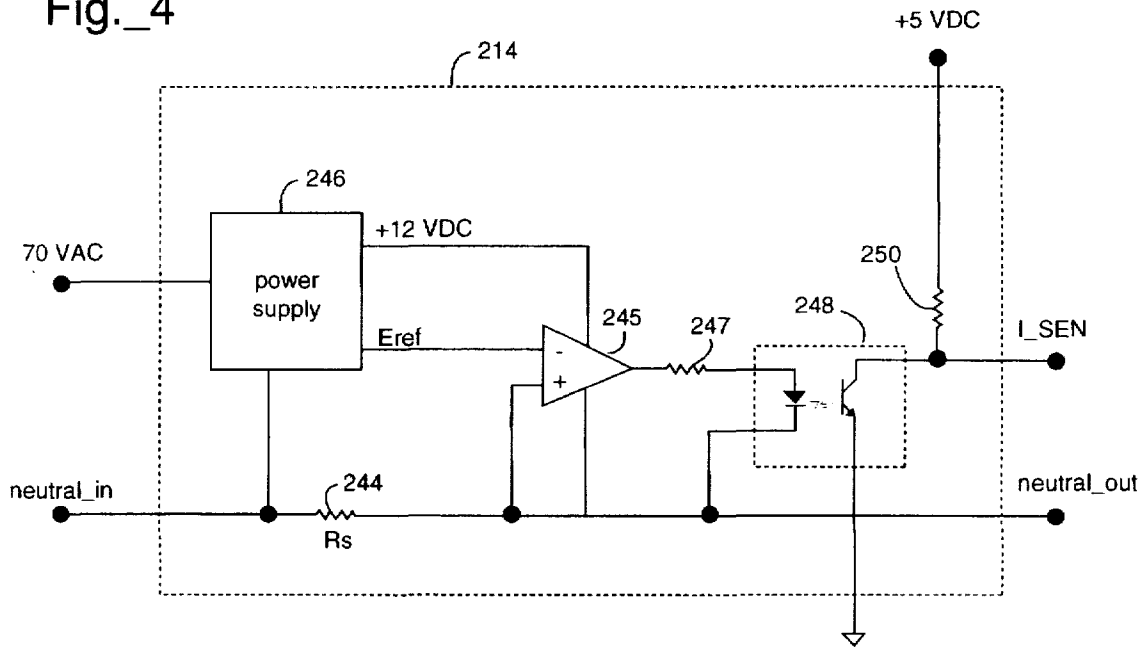
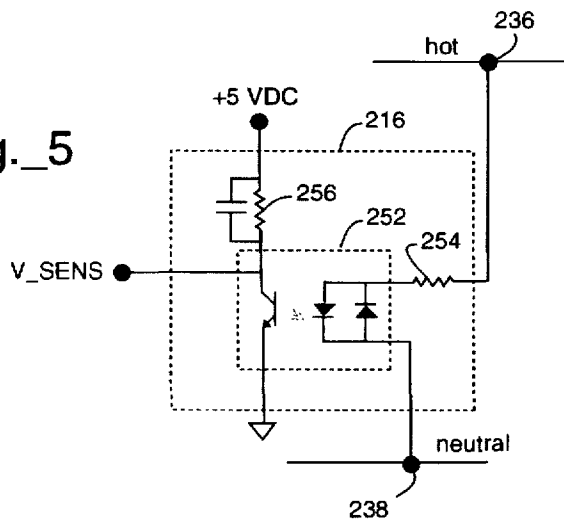


Fig.\_5



# Explore Litigation Insights

Docket Alarm provides insights to develop a more informed litigation strategy and the peace of mind of knowing you're on top of things.

## Real-Time Litigation Alerts



Keep your litigation team up-to-date with **real-time alerts** and advanced team management tools built for the enterprise, all while greatly reducing PACER spend.

Our comprehensive service means we can handle Federal, State, and Administrative courts across the country.

## Advanced Docket Research



With over 230 million records, Docket Alarm's cloud-native docket research platform finds what other services can't. Coverage includes Federal, State, plus PTAB, TTAB, ITC and NLRB decisions, all in one place.

Identify arguments that have been successful in the past with full text, pinpoint searching. Link to case law cited within any court document via Fastcase.

## Analytics At Your Fingertips



Learn what happened the last time a particular judge, opposing counsel or company faced cases similar to yours.

Advanced out-of-the-box PTAB and TTAB analytics are always at your fingertips.

## API

Docket Alarm offers a powerful API (application programming interface) to developers that want to integrate case filings into their apps.

## LAW FIRMS

Build custom dashboards for your attorneys and clients with live data direct from the court.

Automate many repetitive legal tasks like conflict checks, document management, and marketing.

## FINANCIAL INSTITUTIONS

Litigation and bankruptcy checks for companies and debtors.

## E-DISCOVERY AND LEGAL VENDORS

Sync your system to PACER to automate legal marketing.