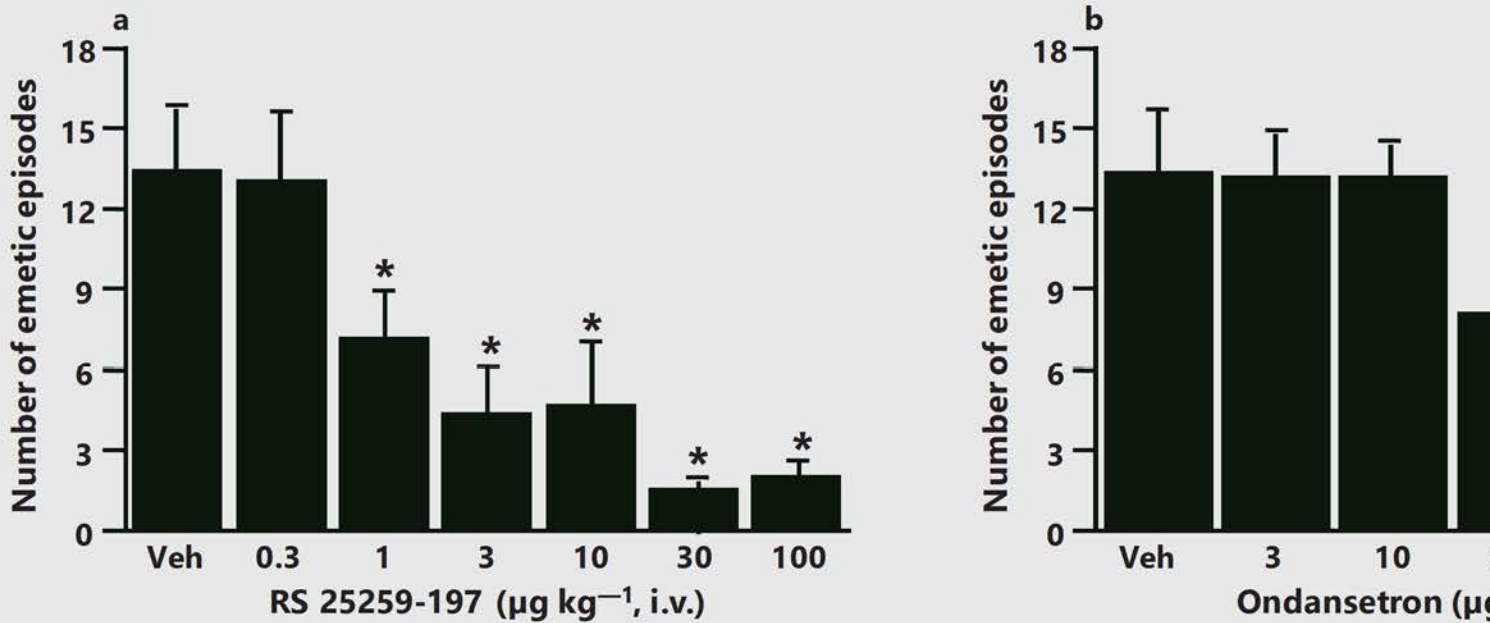


# Eglen (Exh. 1052)



**Figure 6** Inhibitory effects of intravenously administered RS 25259-197 (a) and ondansetron (b) on induced emesis in dogs. Each point represents the mean  $\pm$  s.e.mean,  $n = 6$ . \*Significantly different (p < 0.05) from vehicle control (Veh).

## Eglen (Exh. 1011): Dogs (IV Administration)

Dr. Re