

Eglen (Exh. 1052)

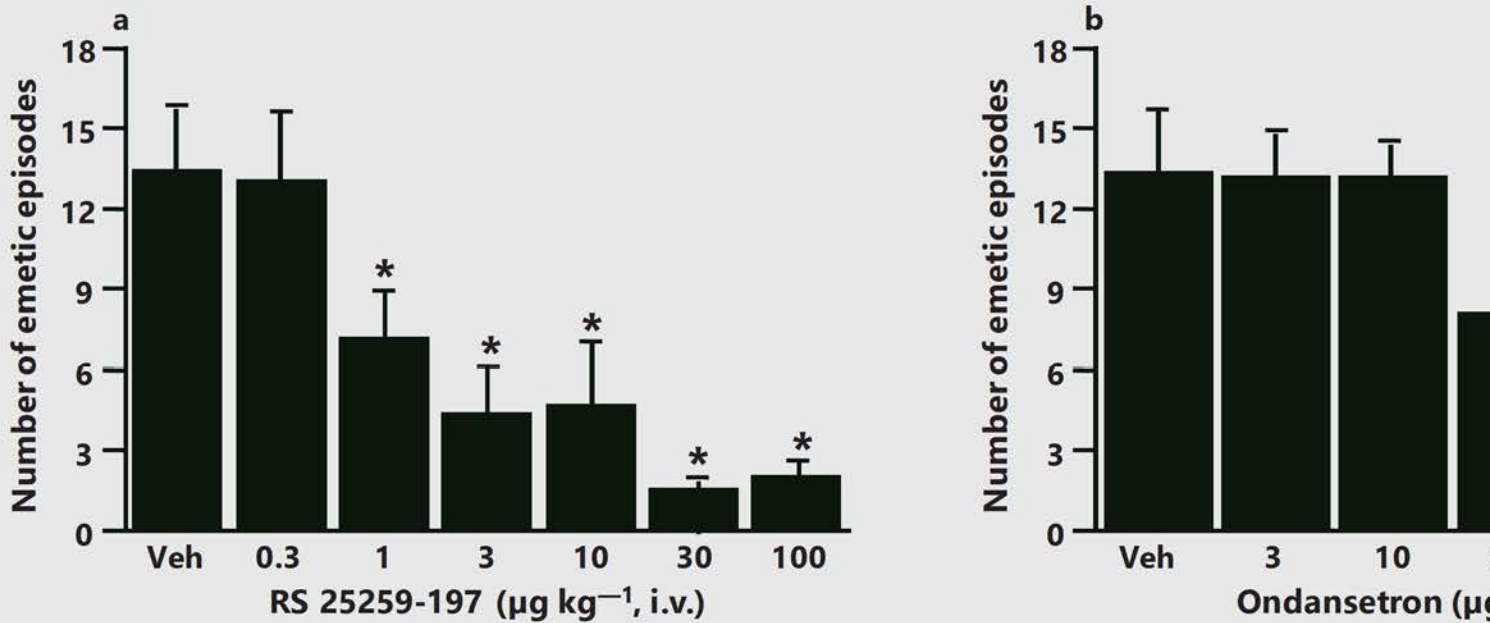


Figure 6 Inhibitory effects of intravenously administered RS 25259-197 (a) and ondansetron (b) on induced emesis in dogs. Each point represents the mean \pm s.e.mean, $n = 6$. *Significantly different (p < 0.05) from vehicle control (Veh).

Eglen (Exh. 1011): Dogs (IV Administration)

Dr. Re