



US006366130B1

(12) **United States Patent**
Podlesny et al.

(10) **Patent No.:** US 6,366,130 B1
(45) **Date of Patent:** Apr. 2, 2002

(54) **HIGH SPEED LOW POWER DATA TRANSFER SCHEME**

(75) Inventors: **Andrew V. Podlesny; Alexander V. Malshin; Alexander Y. Solomatnikov**, all of Moscow (RU)

(73) Assignee: **Elbrus International Limited**, George Town Grand Cayman (KY)

(*) Notice: Subject to any disclaimer, the term of this patent is extended or adjusted under 35 U.S.C. 154(b) by 0 days.

(21) Appl. No.: **09/505,656**

(22) Filed: **Feb. 17, 2000**

Related U.S. Application Data

(60) Provisional application No. 60/120,531, filed on Feb. 17, 1999.

(51) Int. Cl.⁷ **H03K 19/0185; G11C 7/06**

(52) U.S. Cl. **326/95; 326/86; 326/87; 326/90; 327/57; 327/55; 327/52**

(58) Field of Search **326/21-23, 26-28, 326/30, 86, 87, 90, 93, 95, 98; 327/51-57**

References Cited

U.S. PATENT DOCUMENTS

5,598,371 A * 1/1997 Lee et al. 365/189.05
5,781,028 A * 7/1998 Decuir 326/30

5,894,233 A * 4/1999 Yoon 327/55
6,028,455 A * 2/2000 Yamauchi 327/52
6,147,514 A * 11/2000 Shiratake 327/55
6,154,064 A * 11/2000 Proebsting 327/55
6,184,722 B1 * 2/2001 Hayakawa 327/55

OTHER PUBLICATIONS

Article "On the Parallel Evaluation of Polynomials" in IEEE Transactions On Computer, vol. C-22, No. 1, Jan. 1973 by Kiyoshi Maruyama.

* cited by examiner

Primary Examiner—Michael Tokar

Assistant Examiner—Vibol Tan

(74) *Attorney, Agent, or Firm*—Townsend and Townsend and Crew LLP

(57) **ABSTRACT**

A data transfer arrangement. The data transfer arrangement includes two active pull up/active pull down bus drivers and a voltage precharge source. A differential bus is coupled to the bus drivers and to the voltage precharge source. A latching sense amplifier is coupled to the differential bus and serves as the bus receiver. The bus drivers operate in a precharge phase and a data transfer phase. The bus receiver operates in an analogous but opposite manner, i.e., when the bus drivers are in the precharge phase, the bus receiver is in the data transfer phase and when the bus drivers are in the data transfer phase, the bus receiver is in a precharge phase.

8 Claims, 2 Drawing Sheets

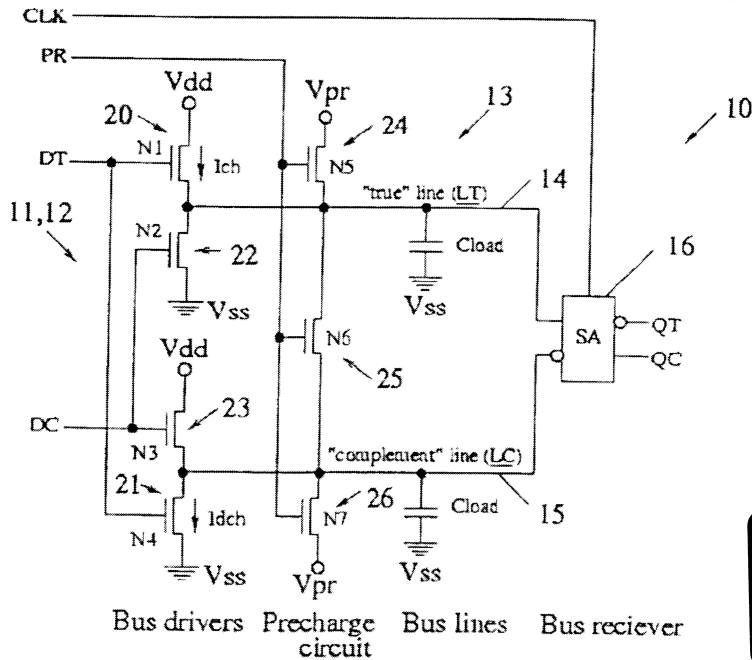


EXHIBIT 1023
WIT: Huber
DATE: 7-1-16
 K. KIDWELL, RMR, CRR, CLR

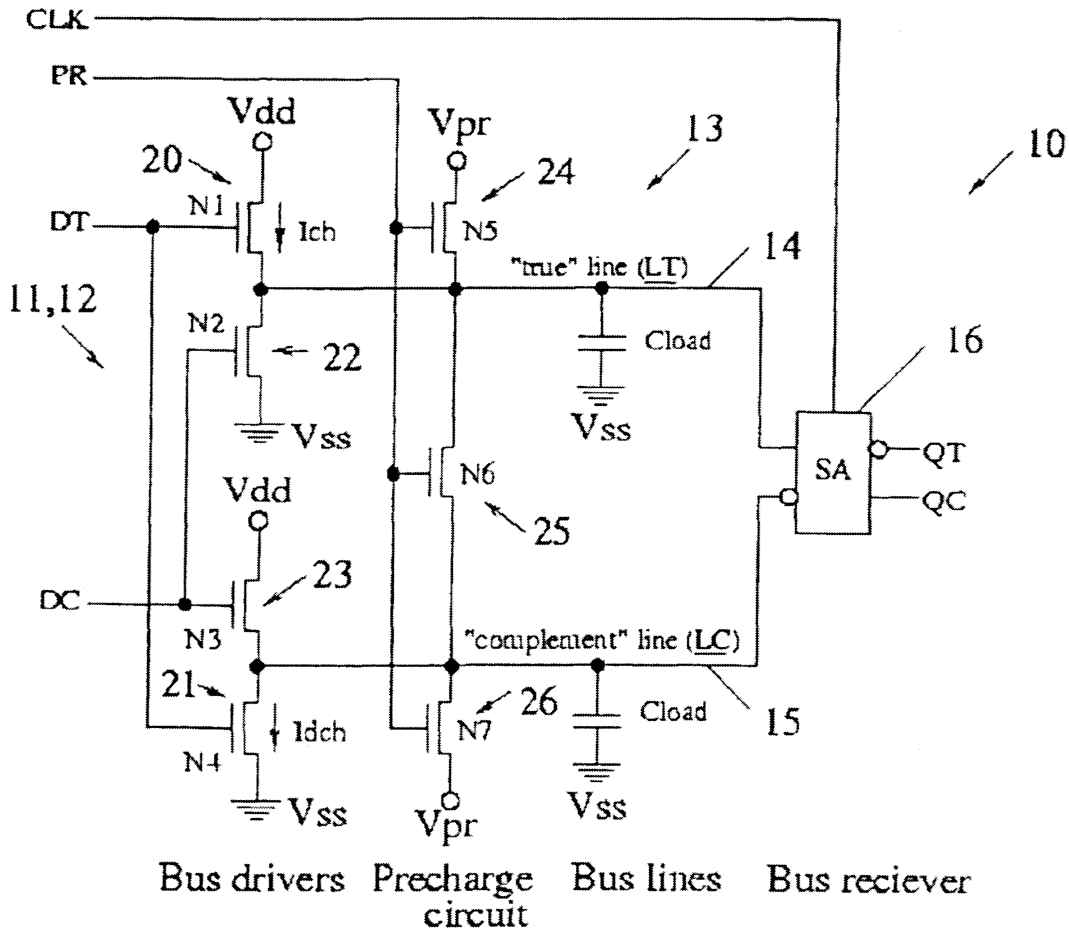
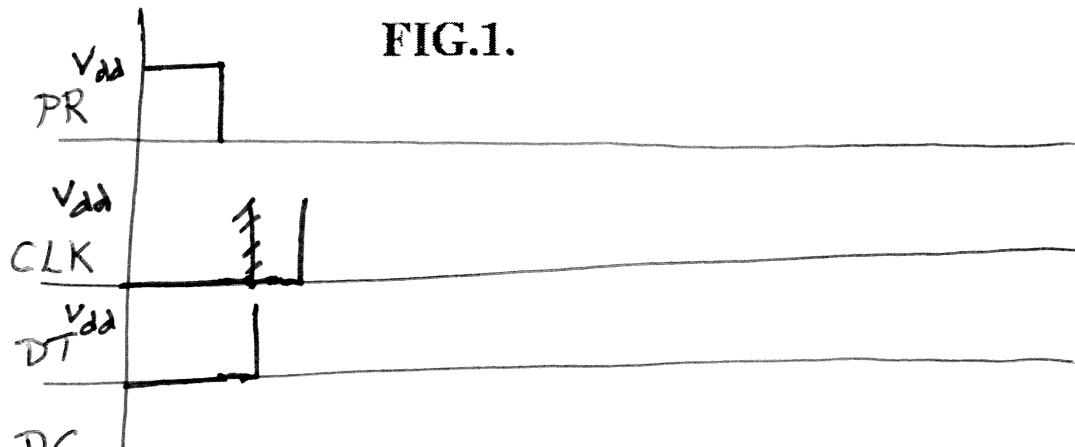


FIG.1.



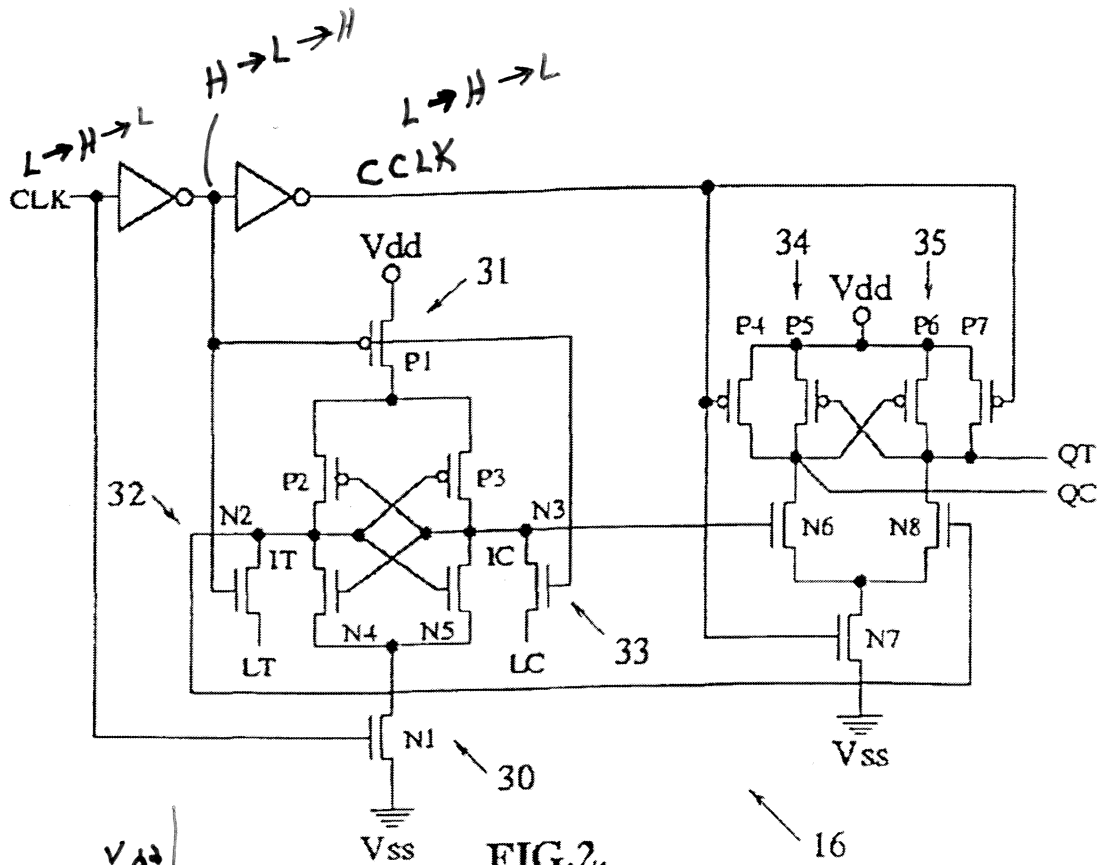
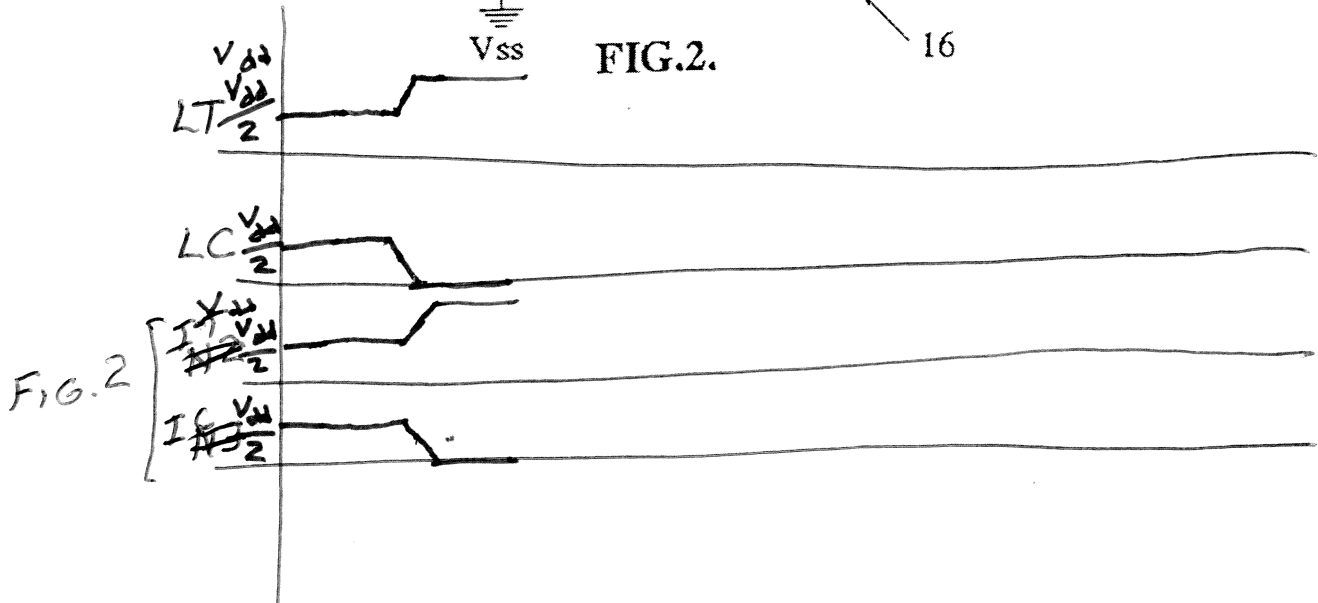


FIG. 2.



1

HIGH SPEED LOW POWER DATA TRANSFER SCHEME

This application claims priority from U.S. Provisional Patent Application No. 60/120,531, filed Feb. 17, 1999, the disclosure of which is incorporated herein by reference in its entirety.

BACKGROUND OF THE INVENTION

1. Field of the Invention

The present invention relates to a data transfer scheme, and more particularly, to a high speed and low power CMOS data transfer scheme.

2. Description of the Prior Art

Today's requirements for electronic circuits require high speed. Additionally, the circuits should be as small and simple as possible due to the ever increasing number of circuits that are crowding today's chip devices. Furthermore, circuits for data transfer should not be sensitive to circuit parameter mismatches, noise, and deviations in various applied voltages.

SUMMARY OF THE INVENTION

The present invention provides a high speed and low power CMOS data transfer arrangement that includes two active pull up/pull down bus drivers, a differential bus that precharges to a specific voltage level and a latched differential sense amplifier that serves as a bus receiver.

In accordance with one embodiment of the present invention, a data transfer arrangement includes two bus drivers, a voltage precharge source, a differential bus coupled to the bus drivers and to the voltage precharge source, and a latching sense amplifier coupled to the differential bus.

In accordance with another embodiment of the present invention, the latching sense amplifier is arranged as a cross coupled latched amplifier.

In accordance with a further embodiment of the present invention, the two bus drivers consist of active pull up/pull down bus drivers.

Thus, the present invention provides a data transfer arrangement that operates at a high speed and uses low power. The data transfer arrangement is faster because the bus voltage swing passes directly to high gain nodes of the cross-coupled latched amplifier. Additionally, the data transfer arrangement uses a lower number of stacked transistors coupled between the Supply voltage and the high gain nodes when compared to the prior art. Additionally, the arrangement according to the present invention is less sensitive to deviations in voltage sources and the deviation of threshold voltage concerns of the input transistors. Additionally, the arrangement is less sensitive to circuit parameter mismatches, data bus common mode noise and power bus noises.

Other features and advantages of the present invention will be understood upon reading and understanding the detailed description of the preferred embodiments below, in conjunction with reference to the drawings, in which like numerals represent like elements.

BRIEF DESCRIPTION OF THE DRAWINGS

FIG. 1 is a schematic of a differential data transfer arrangement in accordance with the present invention; and

FIG. 2 is a schematic of a circuit for a sense amplifying latch for use in the data transfer arrangement illustrated in FIG. 1.

2

DETAILED DESCRIPTION OF THE PREFERRED EXEMPLARY EMBODIMENTS

FIG. 1 illustrates a data transfer arrangement circuit 10 that includes two bus drivers 11, 12, a precharge circuit 13, and two complementary bus lines 14, 15. The bus lines are inputs to a bus receiver 16 that is arranged as a latching sense amplifier.

The two bus drivers are complementary and consist, preferably, of two active pull up/active pull down bus drivers.

Operation of the data transfer arrangement consists of two phases: A bus precharge phase and a data transfer phase.

During the bus precharge phase, the control input PR (control signal for bus precharge circuit 13) is high and signal inputs DT (true phase of dual-rail data function) and DC (complement phase of dual-rail data function) are low. The true phase driver on transistors 20 and 21 and the complement phase driver on transistors 22 and 23 are in high impedance state and both bus lines are equalized and precharged to a potential V_{pr} (buses precharging voltage level) through the turned on transistors 24, 25 and 26.

During the data transfer phase, the control input PR is low. The signal inputs become differential: DT is high and DC is low, and vice versa. One of the drivers is pulled up and charges the appropriate bus line from the precharged level V_{pr} toward a more positive $V_{dd}-V_t$ (where V_t is the threshold voltage of the pull up NMOS transistor of the driver). At the same time, the other driver is pulled down and discharges the opposite bus line from the precharged level V_{pr} towards a more negative level V_{ss} (ground). This provides a differential voltage: $+dV$ and $-dV$ from the precharging level V_{pr} between true and complement bus lines. To provide proper operation of the bus receiver (the sensing amplifier), the minimum voltage difference $2 * dV_{min}$ (swing) between the lines may be about 0.05–0.20V. This low voltage swing is a basis to obtain high frequency of data transfer through the bus.

FIG. 2 illustrates sensing amplifier 16. Preferably, the sensing amplifier is a cross-coupled latched amplifier.

The sense amplifier operates in two phases, a precharge phase and a data transfer phase. However, the sensing amplifier operates opposite to analogous phases of the bus driver.

When the control input CLK is low and the bus driver is in the data transfer mode, the sensing amplifier is in the precharge mode. The cross-coupled latched amplifier is isolated from the power buses (transistors 30 and 31 are turned off).

Transistors 32 and 33 are turned on and thus, the bus voltage swing passes to the internal nodes IT (positive binary single-rail internal point of the sensing amplifier) and IC (negative binary single-rail data input phase internal point of the sensing amplifier) of the latched amplifier. The output nodes of both dynamic gates are precharged to V_{dd} and the complementary outputs QT (true phase of dual-rail data output signal) and QC (complement phase of dual-rail output data signal) of the sensing amplifier become high.

When the control input CLK is high and the bus driver is in the precharge mode, the sensing amplifier is in the data transfer mode. Transistors 32 and 33 are turned off and isolate the internal nodes IT and IC of the latched amplifier from the bus lines. The cross-coupled latched amplifier is connected to power buses (transistors 30 and 31 are turned on) and it begins to amplify the low voltage swings of the internal nodes IT and IC to full logic levels. The output node

3

of one of the dynamic gates is discharged to ground and the appropriate output QT or QC of the sensing amplifier becomes low.

The use of domino output stages in accordance with the present invention instead of static inverters is necessary to avoid leakage currents and output glitches, which may appear because potentials of nodes IT and IC are approximately equal to V_{pr} during the operating cycle of the bus driver. Weak PMOS transistors 34 and 35 are preferably included in the sensing amplifier to help prevent output glitches.

The data transfer arrangement in accordance with the present invention provides an increase in speed due to the differential low voltage swing bus driver in combination with the use of the latched differential sense amplifier as the bus receiver.

A further increase in speed is attained with the data transfer arrangement due to the pull up/pull down bus drivers, which provide equal low differential voltage swings $+dV/-dV$ in both bus lines. This allows both bus lines to be active during the data transfer phase, eliminates the necessity to use special circuits for holding the precharged level and leads to a reduction in the capacitance load of the driver.

The buses precharging to the specific level between ground and $V_{dd}(V_{pr}=K*V_{dd}$, where $K=1/3$ for the ideal MOS model) also provides: equal charge and discharge driver currents $I_{ch}=I_{dch}$, provided by the NMOS pull up follower and the NMOS pull down switch, respectively, and therefore, equal differential voltage swings dV in both charged and discharged bus during the data transfer phase $Pdtf: +dV=I_{ch}*D_{dtf}/C_{LOAD}$; and $-dV=I_{dch}*T_{dtf}/C_{LOAD}$. I_{ch} represents the driver pull up output current (which provides the C_{LOAD} charging from V_{pr} up to V_{dd}); I_{dch} represents the driver pull down output current (providing the C_{LOAD} discharging from V_{pr} up to V_{ss}); C_{LOAD} represents the bus lines' capacitances; $+dV$ represents the bus voltage change up from V_{pr} during data transfer phase; $-dV$ represents the bus voltage change down from V_{pr} during data transfer phase; and T_{dtf} represents the data transfer phase duration. The buses precharging to the specific level between ground and V_{dd} also provides high noise immunity due to active mode for both buses that equal low output resistances of the drivers in pull up and pull down mode and; low total power consumed by drivers during the cycle of operation (transfer plus precharge).

The latched sense amplifier is faster due to the bus voltage swing passing directly to the high-gain nodes IT and IC of the cross-coupled latched amplifier, the lower number of stacked transistors that are connected between the supply voltage V_{dd} (or V_{cc}) and nodes IT and IC, the fact that during latching of the IT and IC nodes, the nodes are charged by $K*V_{dd}$ and $(1-K)*V_{dd}$ instead of simply V_{dd} . Additionally, the speed of the latched sensing amplifier is effected little by the deviation of voltage V_{pr} and the deviation of the threshold voltage of the input transistors.

In addition to the higher speed and low power consumption of the data transfer arrangement in accordance with the present invention, the arrangement is also less sensitive to circuit parameters mismatching, data bus common mode noise and power buses' noises since both drivers are active during data transfer phase. During the appropriate bus precharge phase, the bus receiver is isolated from the bus lines.

Although the invention has been described with reference to specific exemplary embodiments, it will be appreciated that it is intended to cover all modifications and equivalents within the scope of the appended claims.

4

What is claimed is:

1. A data transfer arrangement comprising:
 - two bus drivers;
 - a voltage precharge source;
 - a differential bus coupled to the bus drivers and to the voltage precharge source; and
 - a latching sense amplifier coupled to the differential bus; wherein the latching sense amplifier comprises:
 - a first stage including a cross-coupled latch coupled to a differential data bus; and
 - an output stage coupled to an output of said first stage; wherein the output of the first stage is coupled to an input of the output stage;
 wherein the differential bus and the differential data bus are precharge to a voltage V_{pr} between V_{dd} and ground, where $V_{pr}=K*V_{dd}$, and K is a precharging voltage factor.
2. The data transfer arrangement in accordance with claim 1 wherein the bus drivers comprise active pull-up and active pull-down bus drivers.
3. The data transfer arrangement in accordance with claim 1, wherein the first stage of the latching sense amplifier comprises:
 - a plurality of input pass transistors each having a gate, a source terminal, and a drain; and
 - a plurality of NMOS and PMOS transistors each having a gate, a source terminal, and a drain;
 wherein the drains of the input pass transistors are coupled to the drains of the cross-coupled latch amplifier NMOS and PMOS transistors, each source terminal of the input pass transistors is coupled to an input, the sources of the cross-coupled latch amplifier NMOS transistors are coupled to the drain of the NMOS transistor coupled to a clock signal input, and the sources of the PMOS transistors are coupled to the drain of the PMOS transistor having a gate coupled to an inverted clock signal input.
4. The data transfer arrangement in accordance with claim 1, wherein the output stage of the latching sense amplifier comprises:
 - a plurality of input transistors each having a gate, a source terminal, and a drain; and
 - a pair of cross-coupled PMOS transistors each having a gate, a source terminal, and a drain;
 - a first PMOS transistor having a gate, a source terminal, and a drain, the gate being coupled to a clock signal input; the source being coupled to the source of the first of the cross-coupled PMOS transistors; and the drain being coupled to the drain of the first of the input transistors; and
 - a second PMOS transistor having a gate, a source terminal, and a drain, the gate being coupled to a clock signal input; the source being coupled to the source of a second of the cross-coupled PMOS transistors; and the drain being coupled to the drain of the second of the input transistors;
 wherein the sources of the input transistors are coupled to a source of an NMOS transistor having a gate coupled to a clock signal input;
 - wherein the sources of the cross-coupled PMOS transistors are coupled to a voltage supply, the drains of the cross-coupled PMOS transistors are coupled to the drains of the input transistors; and
 - wherein the drains of the cross-coupled transistors provide a true and a complement phase of a data output signal.

Explore Litigation Insights

Docket Alarm provides insights to develop a more informed litigation strategy and the peace of mind of knowing you're on top of things.

Real-Time Litigation Alerts



Keep your litigation team up-to-date with **real-time alerts** and advanced team management tools built for the enterprise, all while greatly reducing PACER spend.

Our comprehensive service means we can handle Federal, State, and Administrative courts across the country.

Advanced Docket Research



With over 230 million records, Docket Alarm's cloud-native docket research platform finds what other services can't. Coverage includes Federal, State, plus PTAB, TTAB, ITC and NLRB decisions, all in one place.

Identify arguments that have been successful in the past with full text, pinpoint searching. Link to case law cited within any court document via Fastcase.

Analytics At Your Fingertips



Learn what happened the last time a particular judge, opposing counsel or company faced cases similar to yours.

Advanced out-of-the-box PTAB and TTAB analytics are always at your fingertips.

API

Docket Alarm offers a powerful API (application programming interface) to developers that want to integrate case filings into their apps.

LAW FIRMS

Build custom dashboards for your attorneys and clients with live data direct from the court.

Automate many repetitive legal tasks like conflict checks, document management, and marketing.

FINANCIAL INSTITUTIONS

Litigation and bankruptcy checks for companies and debtors.

E-DISCOVERY AND LEGAL VENDORS

Sync your system to PACER to automate legal marketing.