



(12) **United States Patent**  
**Hardee**

(10) **Patent No.:** **US 6,249,469 B1**  
(45) **Date of Patent:** **Jun. 19, 2001**

(54) **SENSE AMPLIFIER WITH LOCAL SENSE DRIVERS AND LOCAL READ AMPLIFIERS**

329 910 A1 8/1989 (EP) .  
2 662 844 12/1991 (FR) ..... G11C/7/00  
2 260 839 4/1993 (GB) .  
2-18785 1/1990 (JP) .  
2-27591 1/1990 (JP) .  
4-228171 8/1992 (JP) .  
4-252493 9/1992 (JP) .

(75) Inventor: **Kim Hardee**, Colorado Springs, CO (US)

(73) Assignees: **United Memories, Inc.**, Colorado Springs, CO (US); **Nippon Steel Semiconductor Corporation** (JP)

**OTHER PUBLICATIONS**

English abstract re JP 2-18785 to Hitachi Ltd.  
English abstract re JP 4-228171 to Hitachi Ltd.  
English abstract re JP 4-252493 to NEC Corp.  
English abstract re JP 5-303495 to Yamatake Honeywell Co., Ltd.

(\* ) Notice: Subject to any disclaimer, the term of this patent is extended or adjusted under 35 U.S.C. 154(b) by 1149 days.

(21) Appl. No.: **08/674,282**

(22) Filed: **Jul. 1, 1996**

\* cited by examiner

**Related U.S. Application Data**

(63) Continuation of application No. 07/976,312, filed on Nov. 12, 1992, now abandoned.

(51) **Int. Cl.**<sup>7</sup> ..... **G11C 7/00**

(52) **U.S. Cl.** ..... **365/205; 365/208; 365/189.05**

(58) **Field of Search** ..... **365/205, 207, 365/208, 189.05, 189.01**

*Primary Examiner*—A. Zarabian

(74) *Attorney, Agent, or Firm*—Cook, Alex, McFarron, Manzo, Cummings & Mehler, Ltd.

(57) **ABSTRACT**

A sense amplifier for a very high density integrated circuit memory using CMOS technology is described. Each sense amplifier includes first and second local sense amplifier drive transistors, one connecting the P channel transistors to VCC; the other connecting the N channel transistors to VSS. A read amplifier circuit is provided within each sense amplifier and is operated by read control signals. Internal nodes of the latch of the sense amplifier are coupled by pass transistors that are responsive to column write control signals. Local data write driver transistors are also provided to selectively couple the pass transistors to VCC-Vt or VSS in response to further data write control signals. A relatively wider power line is coupled to the drive transistors to provide VCC thereto, and a narrower line is used to control those first sense amplifier drive transistors. Corresponding wide and narrow lines are used for the second local sense amplifier drive transistors which couple the N channel transistors to ground. Each sense amplifier may be shared between first and second pairs of bit lines through the use of isolation transistors and a corresponding isolation signal.

(56) **References Cited**

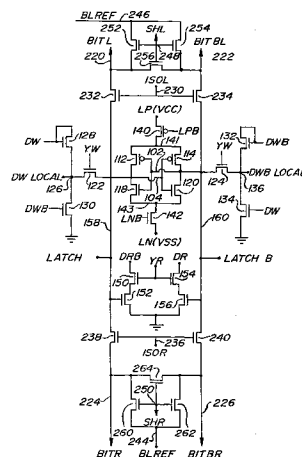
**U.S. PATENT DOCUMENTS**

- 4,680,735 7/1987 Miyamoto et al. .... 365/210
- 4,764,900 8/1988 Bader et al. .... 365/189
- 4,948,993 \* 8/1990 Chin et al. .... 365/205 X
- 4,984,206 1/1991 Komatsu et al. .... 365/208
- 5,083,295 \* 1/1992 Lammerts et al. .... 365/205
- 5,220,527 \* 6/1993 Ohsawa ..... 365/149
- 5,228,106 \* 7/1993 Ang et al. .... 365/205 X
- 5,243,573 \* 9/1993 Makihara et al. .... 365/205
- 5,247,479 \* 9/1993 Young ..... 365/189.05
- 5,265,047 \* 11/1993 Leung et al. .... 365/154
- 5,267,197 11/1993 McClure ..... 365/189.01
- 5,270,971 \* 12/1993 Muraoka et al. .... 365/205 X
- 5,298,815 \* 3/1994 Brunolli ..... 365/205 X

**FOREIGN PATENT DOCUMENTS**

175 880 4/1986 (EP) ..... G11C/7/00

**22 Claims, 7 Drawing Sheets**



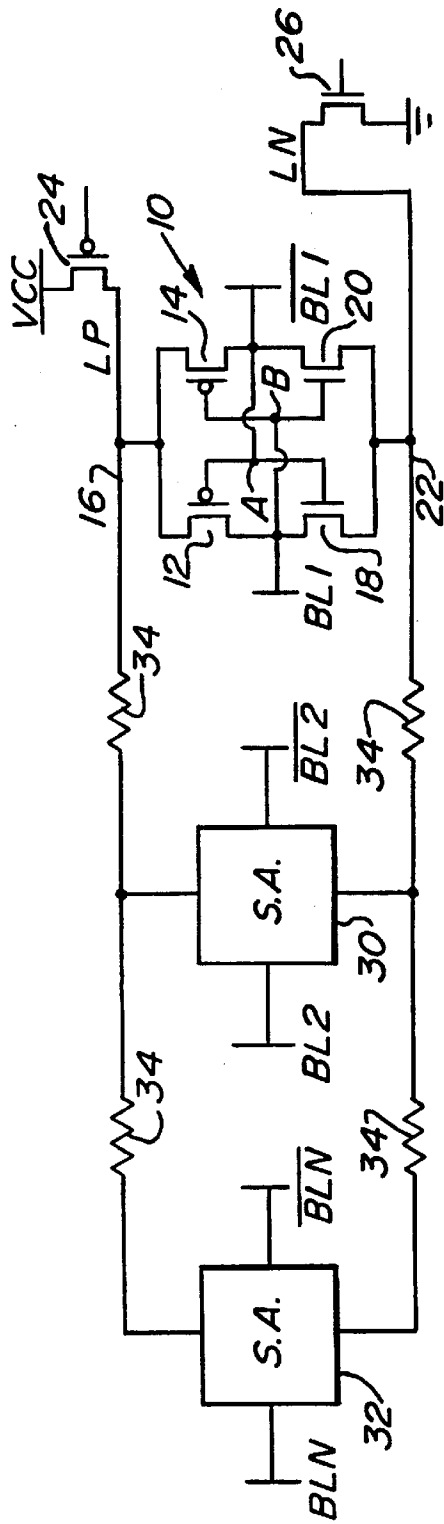


FIG. 1 (PRIOR ART)

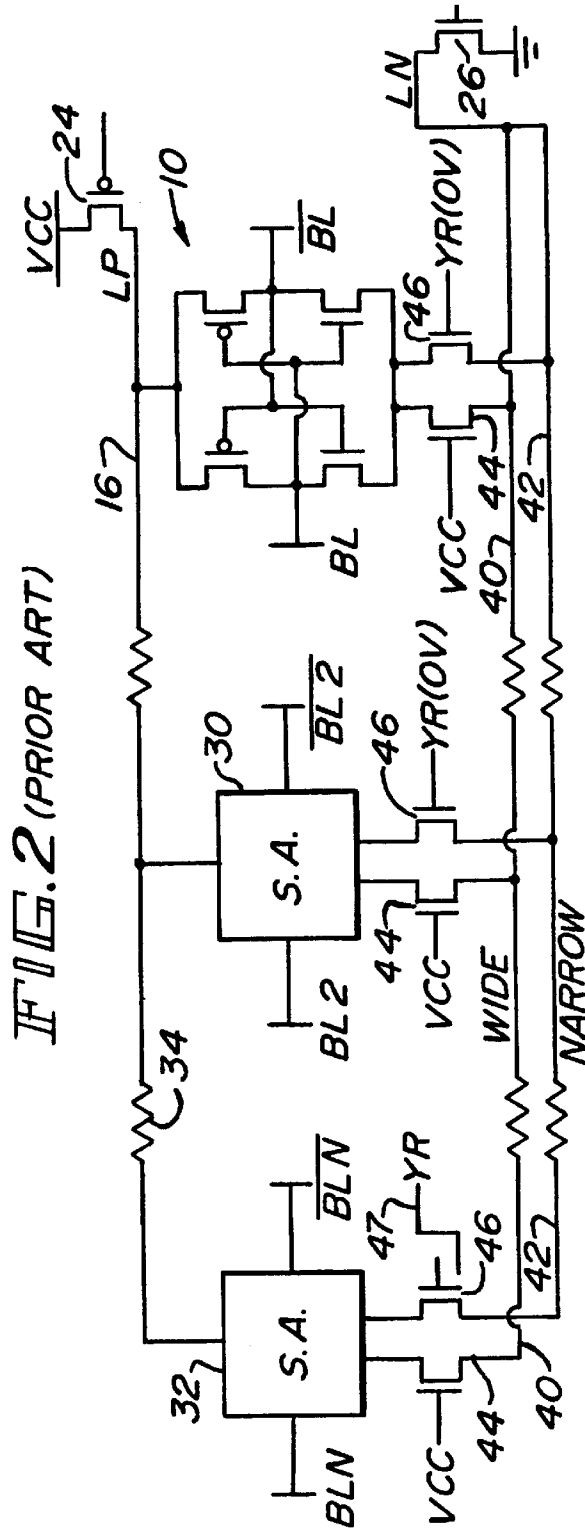


FIG. 2 (PRIOR ART)

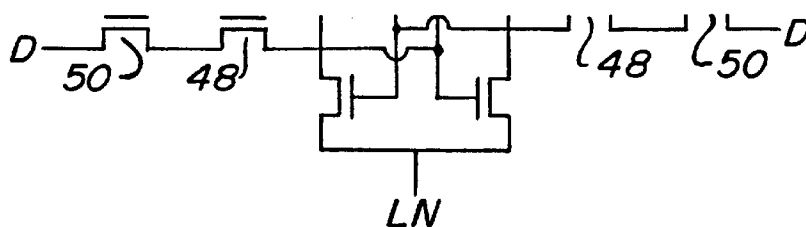
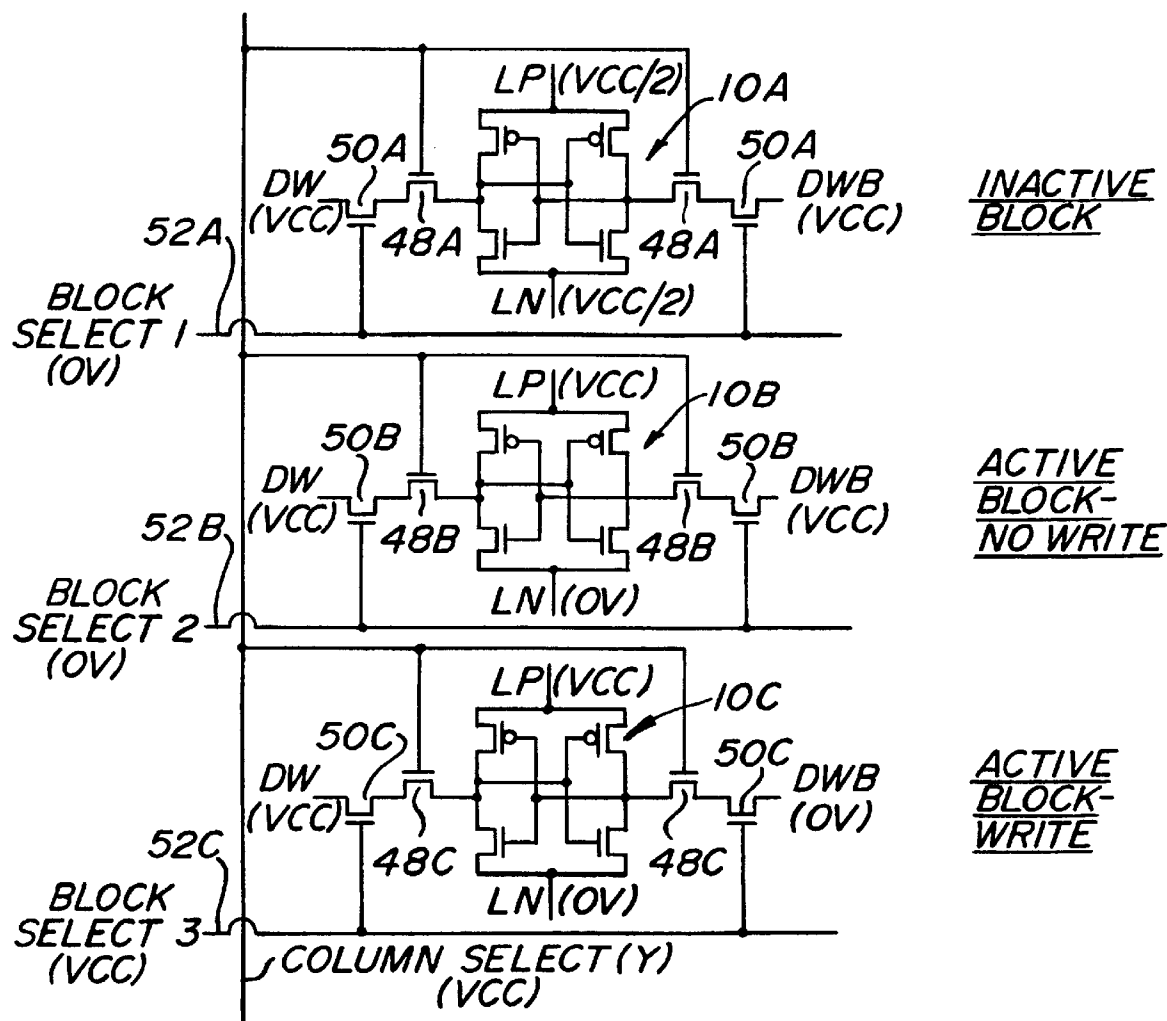


FIG. 3 (PRIOR ART)

FIG. 4 (PRIOR ART)



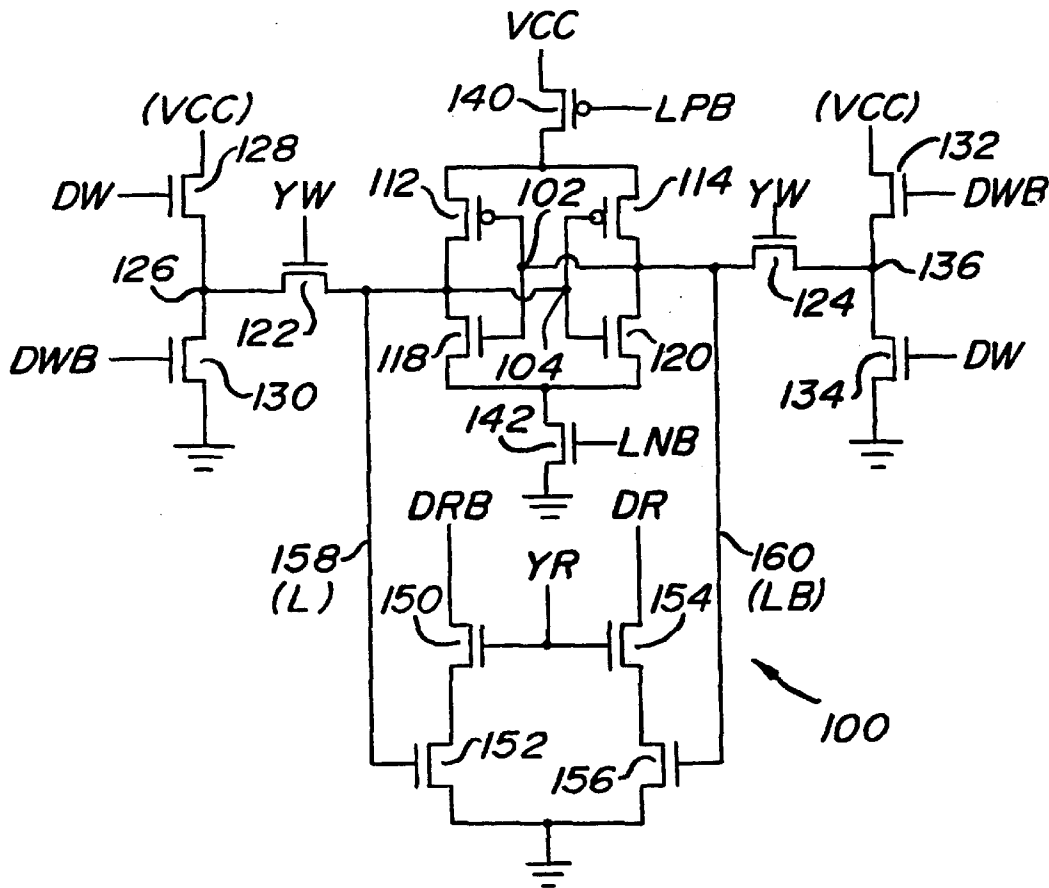


FIG. 5

FIG. 6

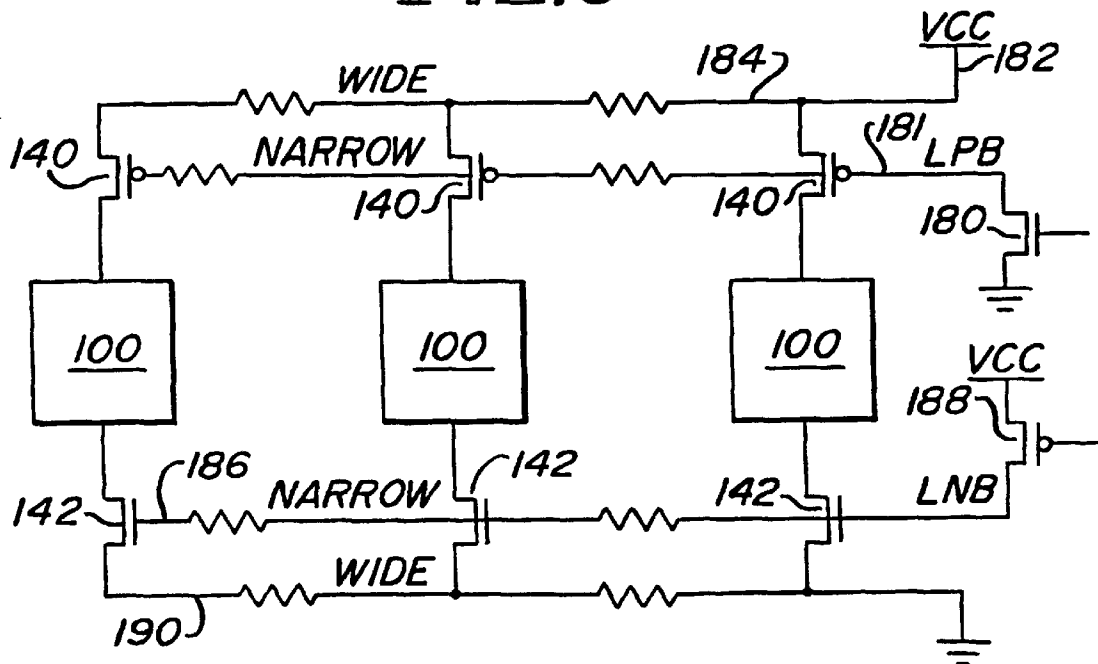
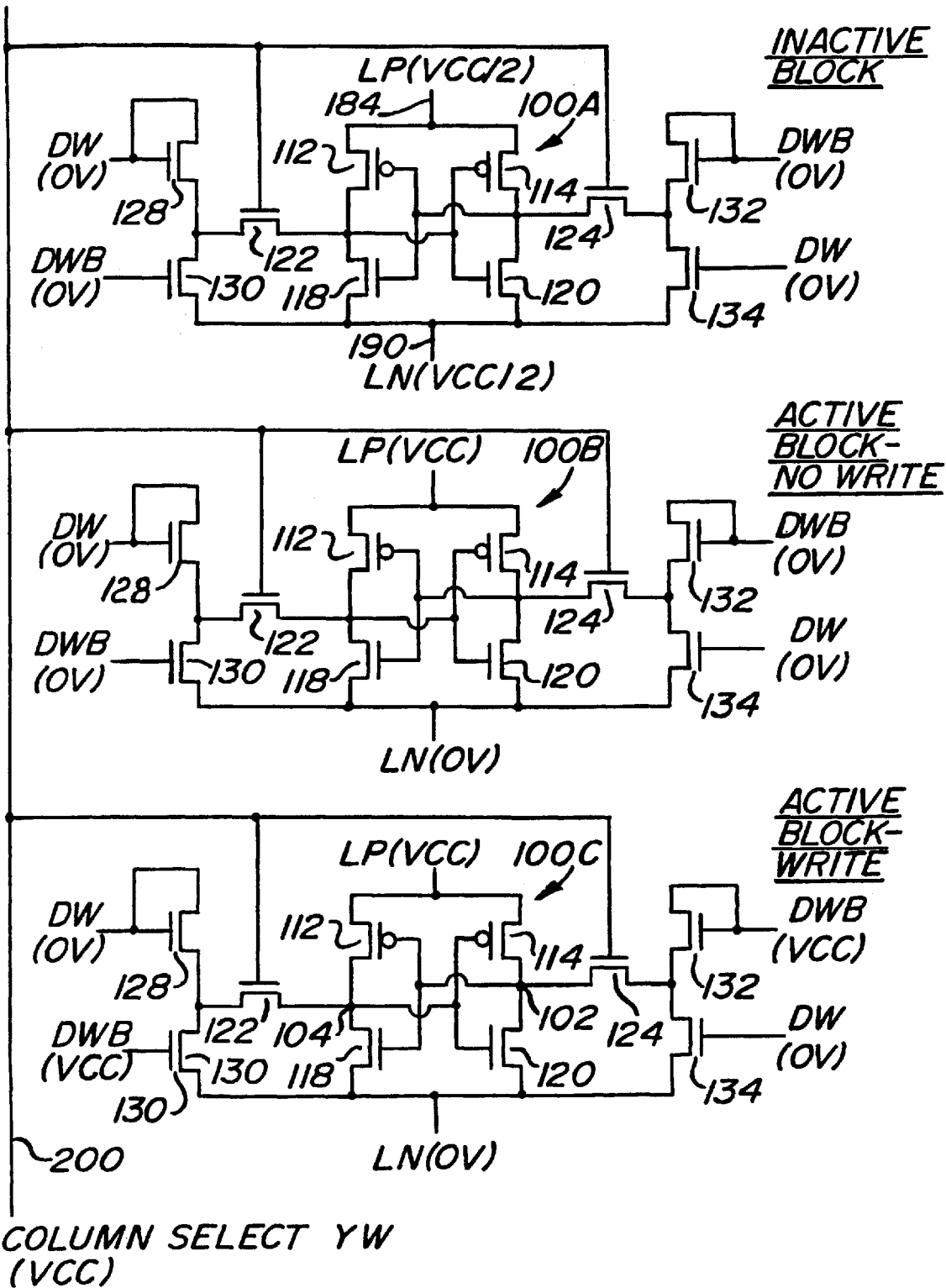


FIG. 7



# Explore Litigation Insights

Docket Alarm provides insights to develop a more informed litigation strategy and the peace of mind of knowing you're on top of things.

## Real-Time Litigation Alerts



Keep your litigation team up-to-date with **real-time alerts** and advanced team management tools built for the enterprise, all while greatly reducing PACER spend.

Our comprehensive service means we can handle Federal, State, and Administrative courts across the country.

## Advanced Docket Research



With over 230 million records, Docket Alarm's cloud-native docket research platform finds what other services can't. Coverage includes Federal, State, plus PTAB, TTAB, ITC and NLRB decisions, all in one place.

Identify arguments that have been successful in the past with full text, pinpoint searching. Link to case law cited within any court document via Fastcase.

## Analytics At Your Fingertips



Learn what happened the last time a particular judge, opposing counsel or company faced cases similar to yours.

Advanced out-of-the-box PTAB and TTAB analytics are always at your fingertips.

## API

Docket Alarm offers a powerful API (application programming interface) to developers that want to integrate case filings into their apps.

## LAW FIRMS

Build custom dashboards for your attorneys and clients with live data direct from the court.

Automate many repetitive legal tasks like conflict checks, document management, and marketing.

## FINANCIAL INSTITUTIONS

Litigation and bankruptcy checks for companies and debtors.

## E-DISCOVERY AND LEGAL VENDORS

Sync your system to PACER to automate legal marketing.