

[54] EVENT DRIVEN REMOTE GRAPHICAL REPORTING OF BUILDING AUTOMATION SYSTEM PARAMETERS

[75] Inventors: Jonathan C. French, Rockford, Ill.; David R. Rounds, Beloit, Wis.; James R. Herdeman, Rockford; Brent S. Bernardi, Loves Park, both of Ill.

[73] Assignee: Barber-Colman Company, Rockford, Ill.

[21] Appl. No.: 529,945

[22] Filed: May 29, 1990

[51] Int. Cl.<sup>5</sup> ..... G08B 19/00; G08B 1/00

[52] U.S. Cl. .... 340/522; 340/506; 340/525; 340/531; 358/400; 358/441; 358/442; 364/550; 379/100

[58] Field of Search ..... 340/522, 506, 525, 531; 358/108, 400, 441, 442; 364/141, 138, 550; 379/100

[56] References Cited

U.S. PATENT DOCUMENTS

4,644,478	2/1987	Stephens et al.	340/506
4,933,667	6/1990	Shaw et al.	340/525
4,977,390	12/1990	Saylor et al.	340/506
4,991,200	2/1991	Lin	358/441

OTHER PUBLICATIONS

Brochure entitled "Network 8000 System Overview", May 1989.

"New Controls Gear Highlights Atlanta HVAC Exposition", Energy User News, Feb. 1990.

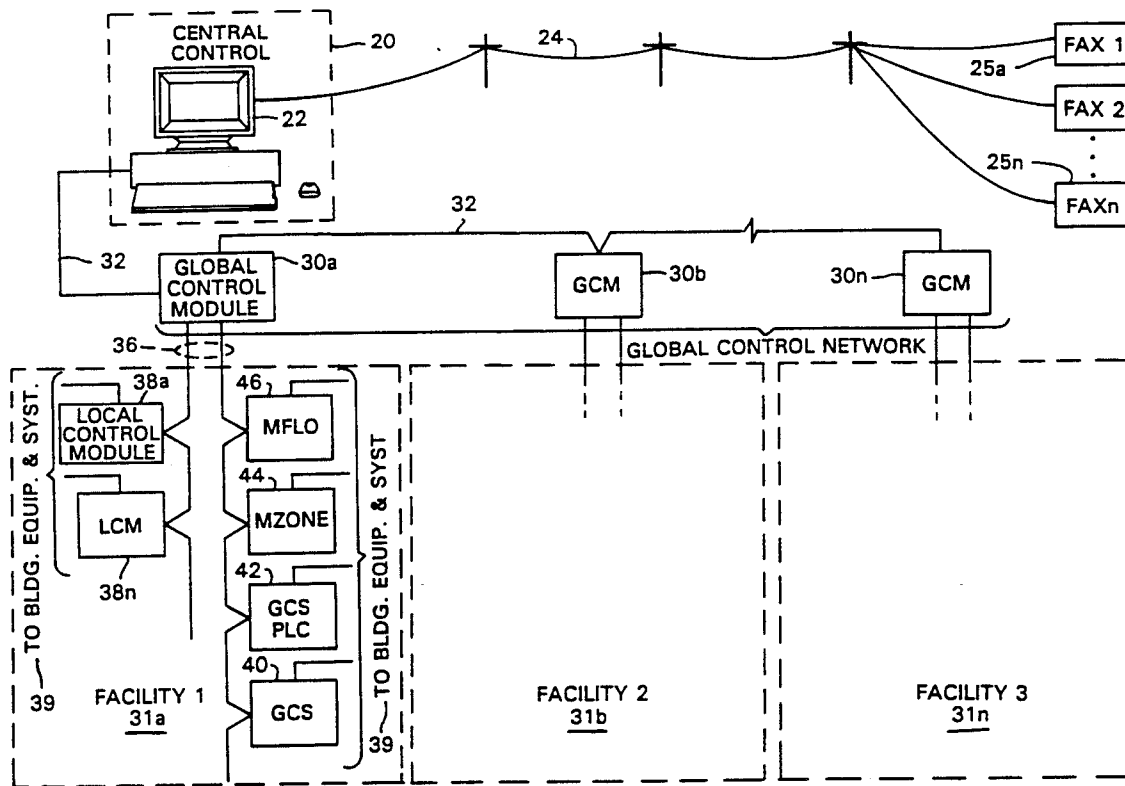
Data Sheet on the Quadram JT-FAX9600.

Primary Examiner—Donnie L. Crosland  
Attorney, Agent, or Firm—Leydig, Voit & Mayer

[57] ABSTRACT

A system and method for reporting of alarms (or other conditions) to a remote location, in a building automation system. The alarm is reported in graphical format which shows not only the information related directly to the alarm, but also additional information, including graphical information, intended to put the alarm in context. The system provides the user the ability to specify a transmittable alarm, and to define a graphical message for that alarm which includes fixed or static building parameters associated with real time building operating parameters. Upon occurrence of an alarm condition, the system assembles a graphical display for transmission which includes the specified fixed parameters and measured data for the real time operating parameters. The system assures that data is collected and assembled into the graphic display for all specified real time operating parameters, then initiates a facsimile transmission of the graphic display to a remote location.

15 Claims, 4 Drawing Sheets



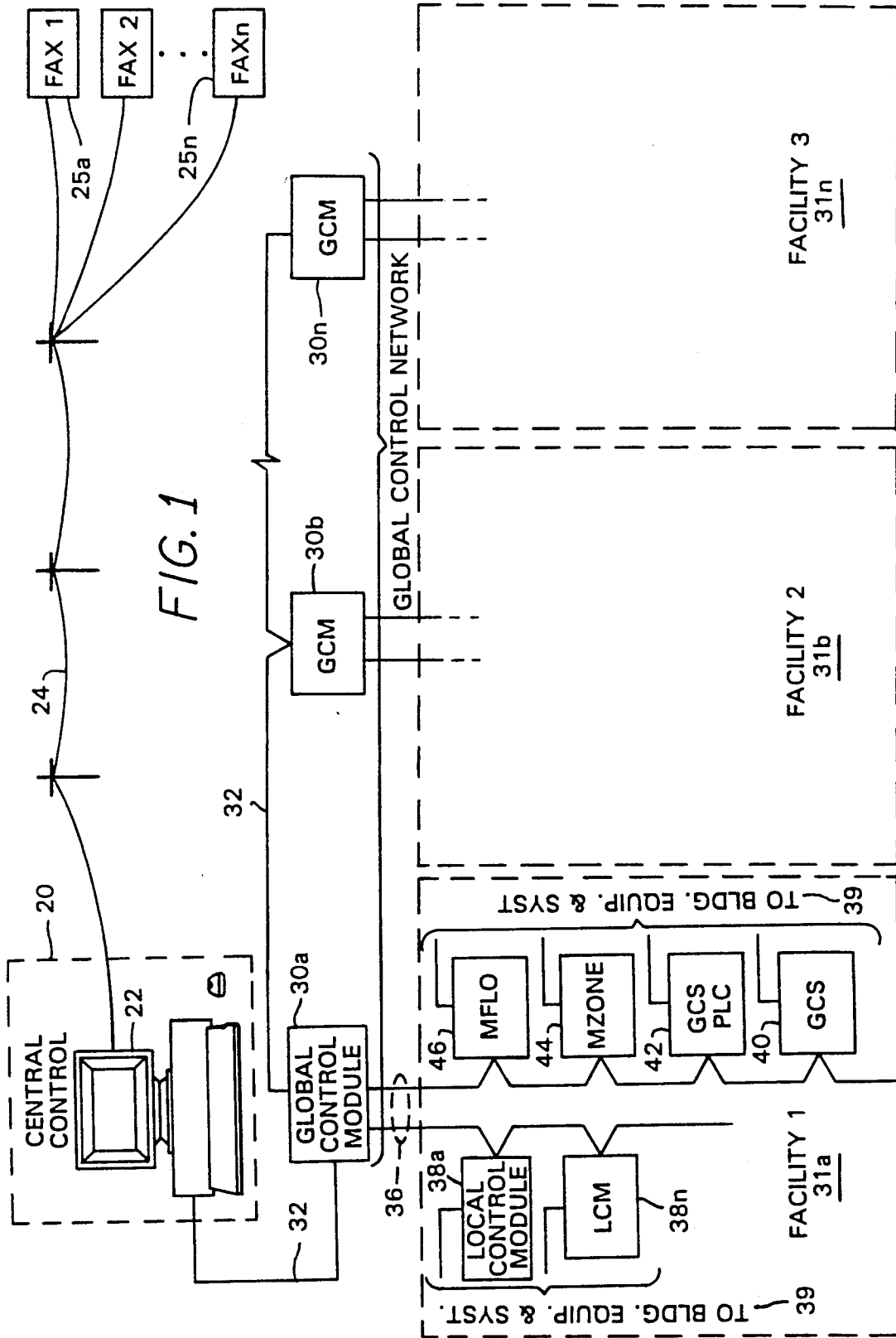


FIG. 1

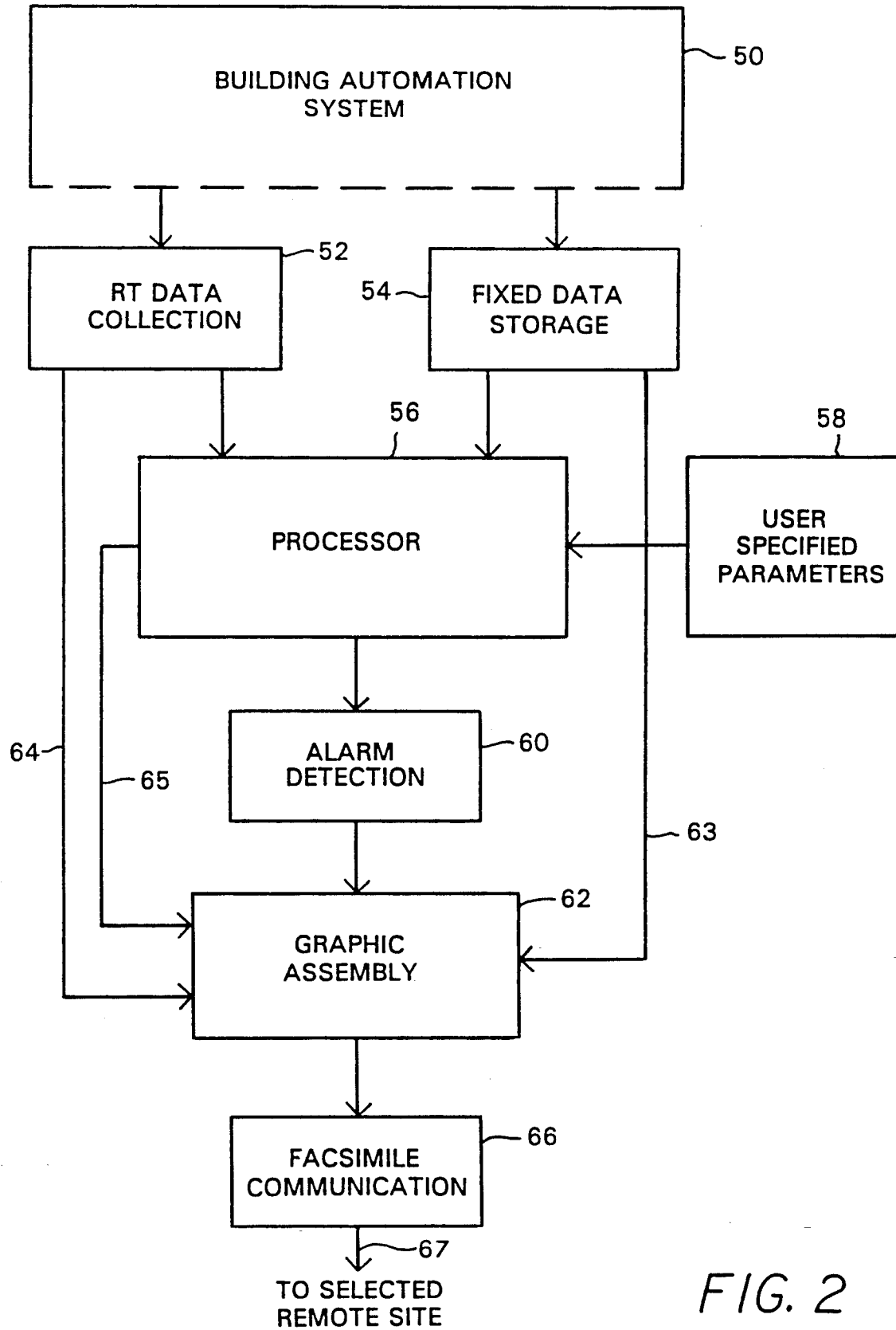


FIG. 2

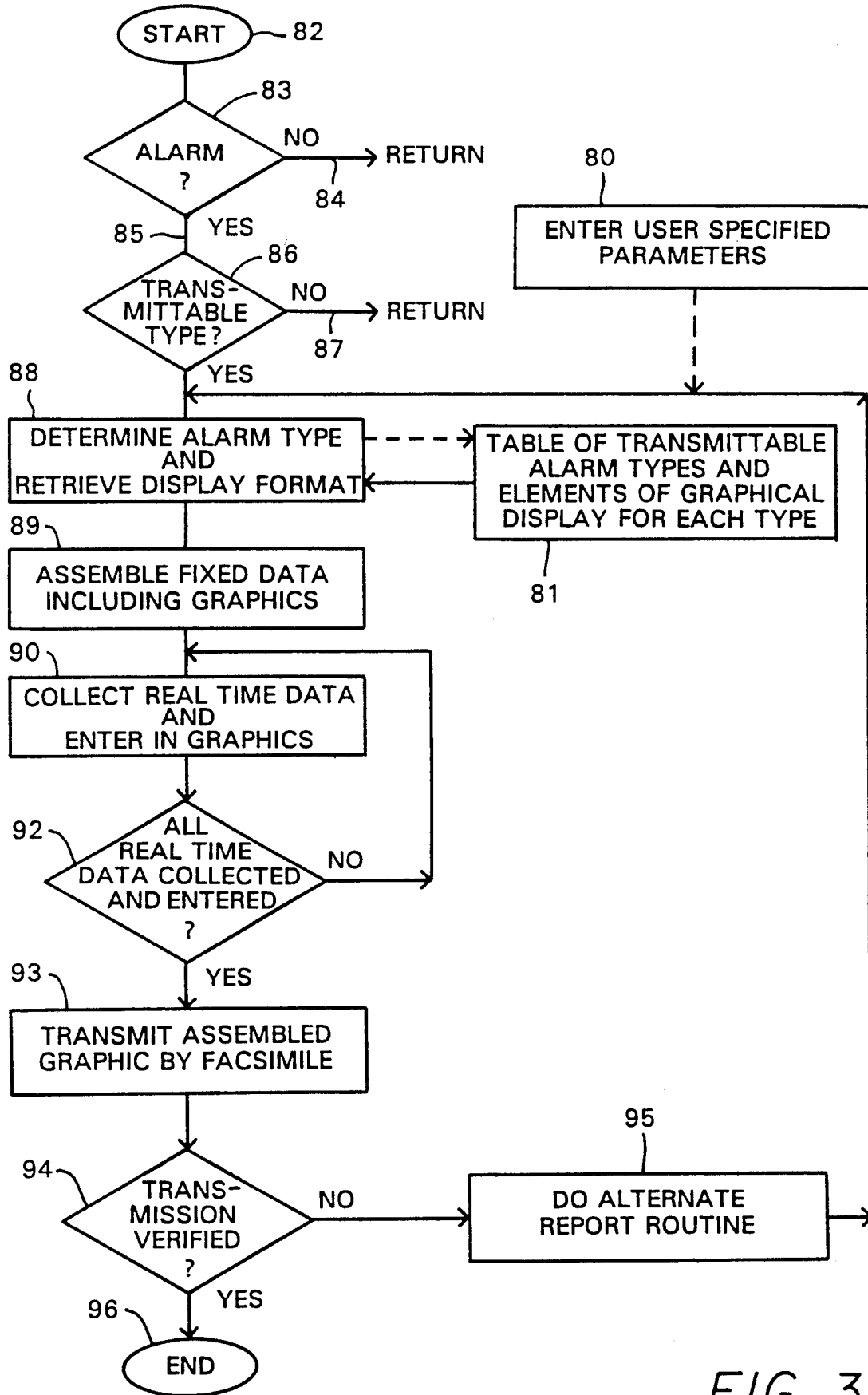


FIG 3

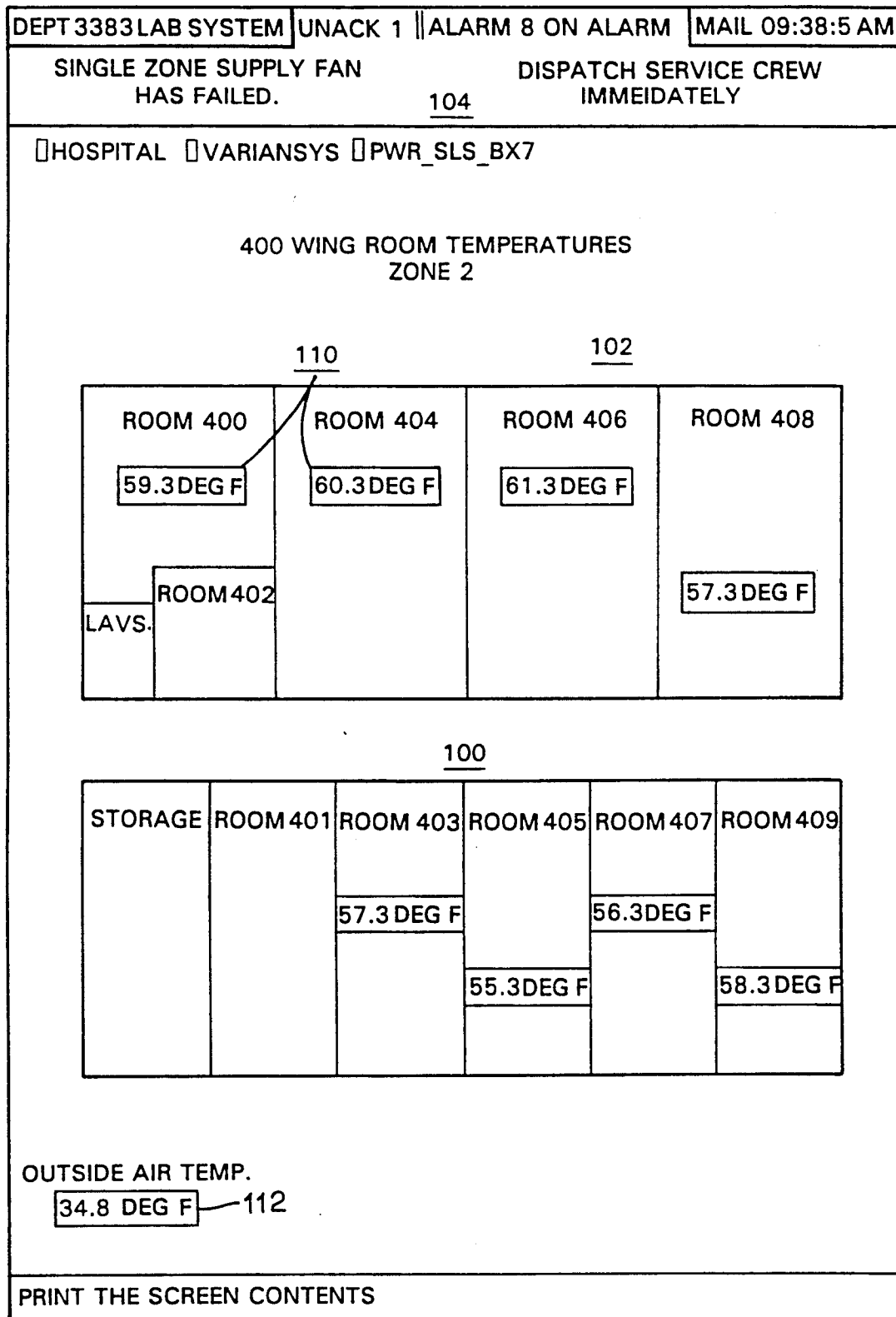


FIG. 4

# Explore Litigation Insights

Docket Alarm provides insights to develop a more informed litigation strategy and the peace of mind of knowing you're on top of things.

## Real-Time Litigation Alerts



Keep your litigation team up-to-date with **real-time alerts** and advanced team management tools built for the enterprise, all while greatly reducing PACER spend.

Our comprehensive service means we can handle Federal, State, and Administrative courts across the country.

## Advanced Docket Research



With over 230 million records, Docket Alarm's cloud-native docket research platform finds what other services can't. Coverage includes Federal, State, plus PTAB, TTAB, ITC and NLRB decisions, all in one place.

Identify arguments that have been successful in the past with full text, pinpoint searching. Link to case law cited within any court document via Fastcase.

## Analytics At Your Fingertips



Learn what happened the last time a particular judge, opposing counsel or company faced cases similar to yours.

Advanced out-of-the-box PTAB and TTAB analytics are always at your fingertips.

## API

Docket Alarm offers a powerful API (application programming interface) to developers that want to integrate case filings into their apps.

## LAW FIRMS

Build custom dashboards for your attorneys and clients with live data direct from the court.

Automate many repetitive legal tasks like conflict checks, document management, and marketing.

## FINANCIAL INSTITUTIONS

Litigation and bankruptcy checks for companies and debtors.

## E-DISCOVERY AND LEGAL VENDORS

Sync your system to PACER to automate legal marketing.