

**United States Patent** [19]

[11] **Patent Number:** 5,747,813

Norton et al.

[45] **Date of Patent:** May 5, 1998

- [54] **BROADBAND MICROSPECTRO-REFLECTOMETER**
- [75] Inventors: **Adam E. Norton**, Palo Alto; **Chester L. Mallory**, Campbell; **Hung V. Pham**, San Jose; **Paul Rasmussen**, Livermore, all of Calif.
- [73] Assignee: **KLA-Tencop. Corporation**, San Jose, Calif.

4,795,256	1/1989	Krause et al. ....	356/320
4,844,617	7/1989	Kelderman et al. ....	356/372
4,848,904	7/1989	Sapp et al. .	
4,899,055	2/1990	Adams .	
4,906,844	3/1990	Hall .	
4,945,220	7/1990	Mallory et al. .	
4,983,823	1/1991	Isobe .	
5,067,805	11/1991	Corle et al. .	

- [21] Appl. No.: **227,482**
- [22] Filed: **Apr. 14, 1994**

**FOREIGN PATENT DOCUMENTS**

29 05 727 A1	11/1979	Germany .....	356/448
57-106846	7/1982	Japan .....	356/326
1-308930	12/1989	Japan .....	356/328

**Related U.S. Application Data**

- [63] Continuation of Ser. No. 899,666, Jun. 16, 1992, abandoned.
- [51] **Int. Cl.<sup>6</sup>** ..... **G01N 21/33**
- [52] **U.S. Cl.** ..... **250/372; 250/339.11; 356/448**
- [58] **Field of Search** ..... **250/372, 339.11; 356/448, 326, 328**

*Primary Examiner*—Constantine Hannaher  
*Attorney, Agent, or Firm*—Majestic, Parsons, Siebert & Hsue

**References Cited**

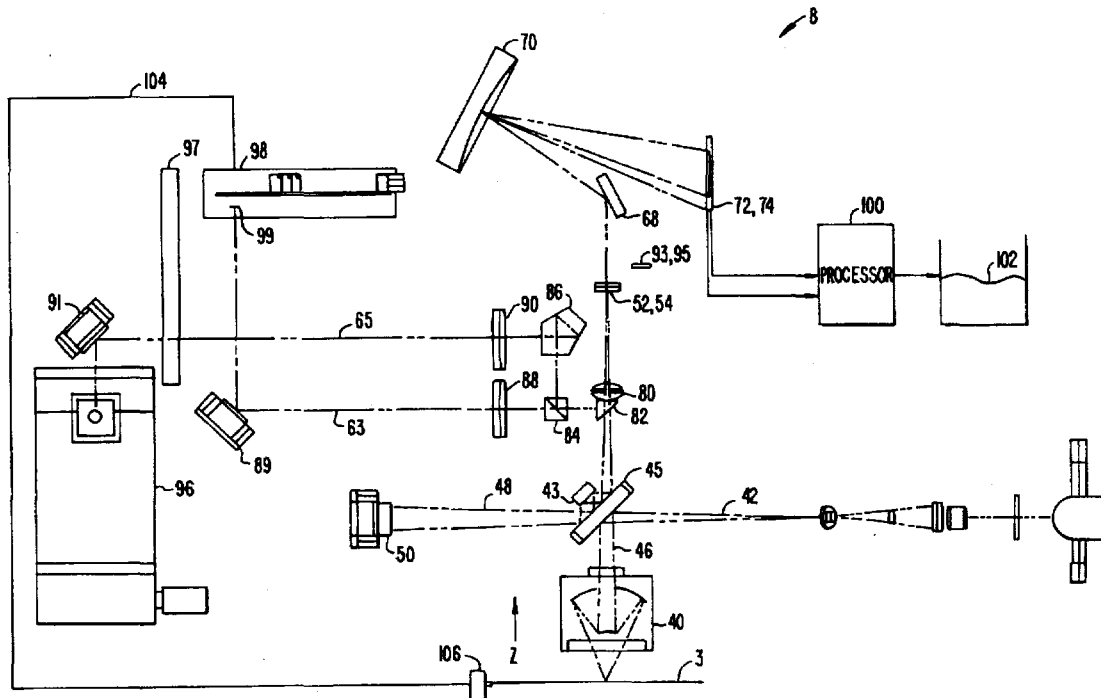
**U.S. PATENT DOCUMENTS**

Re. 34,783	11/1994	Coates .	
3,214,596	10/1965	Schwerdt, Jr. et al. .	
3,752,559	8/1973	Fletcher et al. .	
3,975,084	8/1976	Block .	
3,999,855	12/1976	Hirschfeld .	
4,106,856	8/1978	Babish .	
4,158,505	6/1979	Mathisen et al. .	
4,645,349	2/1987	Tabata .....	356/382
4,712,912	12/1987	Messerschmidt .	
4,758,088	7/1988	Doyle .	
4,770,530	9/1988	Van Aken et al. ....	356/323

[57] **ABSTRACT**

An improved method and apparatus for measuring the relative reflectance spectra of an observed sample (3) and method and apparatus for autofocussing the sample (3). A broadband visible and ultraviolet beam (42) is split into a sample beam (46) and a reference beam (48). The sample beam (46) is reflected off the surface of the sample (3), and the spectrum of the reflected sample beam (46) is compared to the spectrum of the reference beam (48) to determine the relative reflectance spectrum of the sample (3). A video camera (96) is provided for viewing the sample (3). The autofocus system has a course-focus mode and a fine-focus mode. In the course-focus mode, the sample (3) is focused when the centroid of the sample image is centered on a position sensitive detector (99). In the fine-focus mode, the sample is focused when the intensity of light reaching the detector (99) is minimized.

**57 Claims, 7 Drawing Sheets**



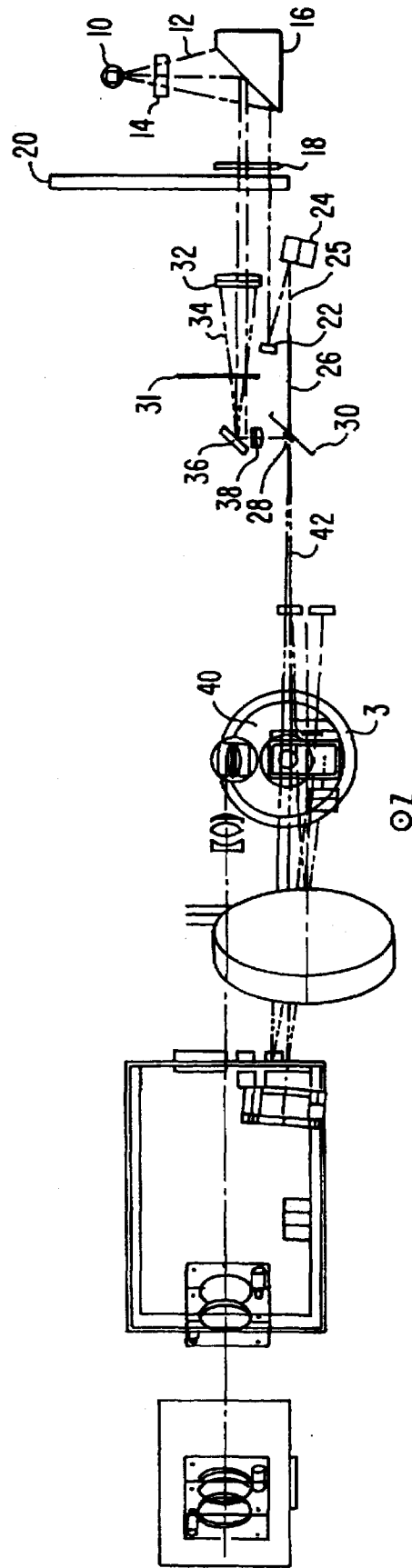


FIG. 1.

8

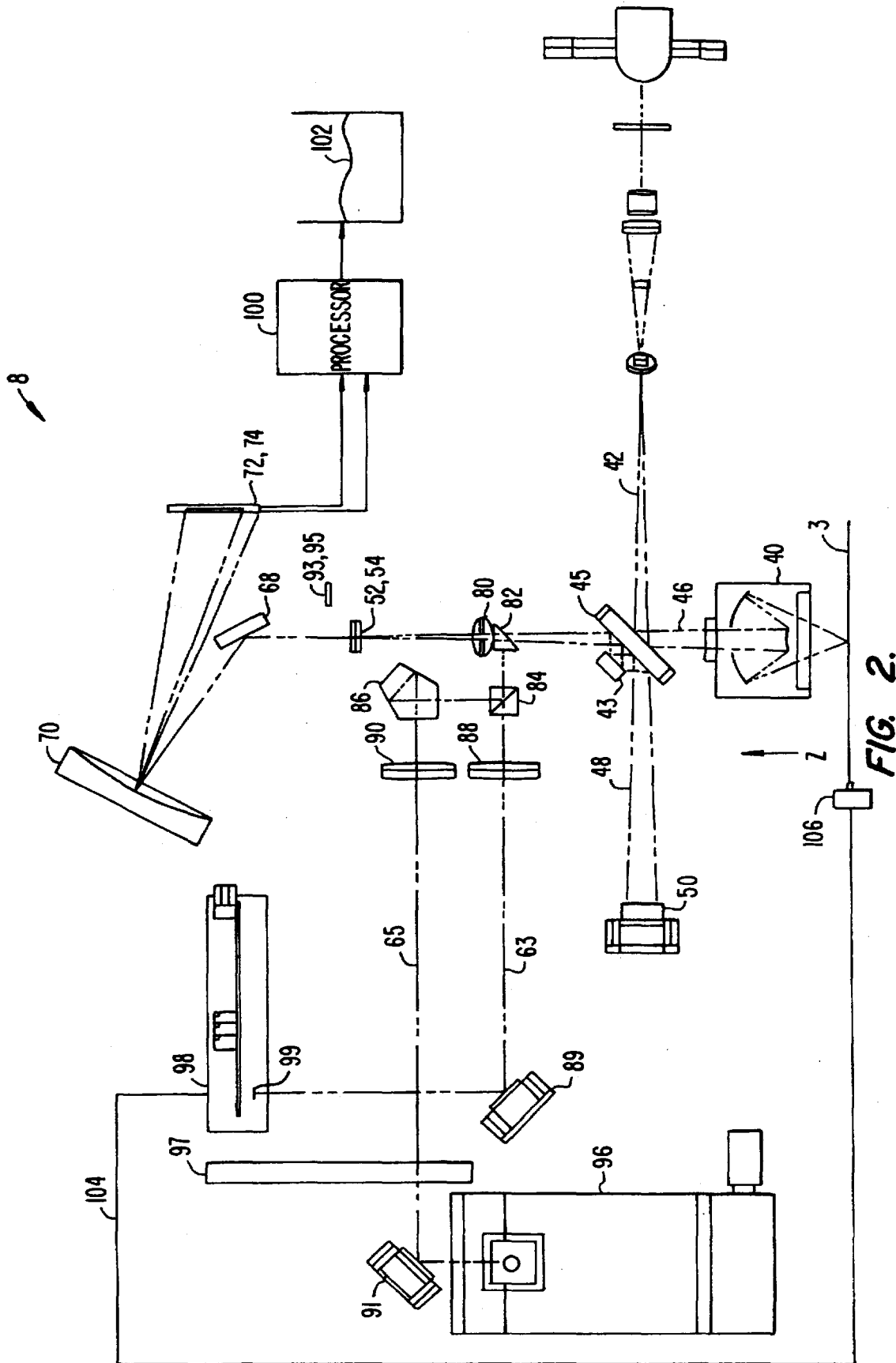


FIG. 2.

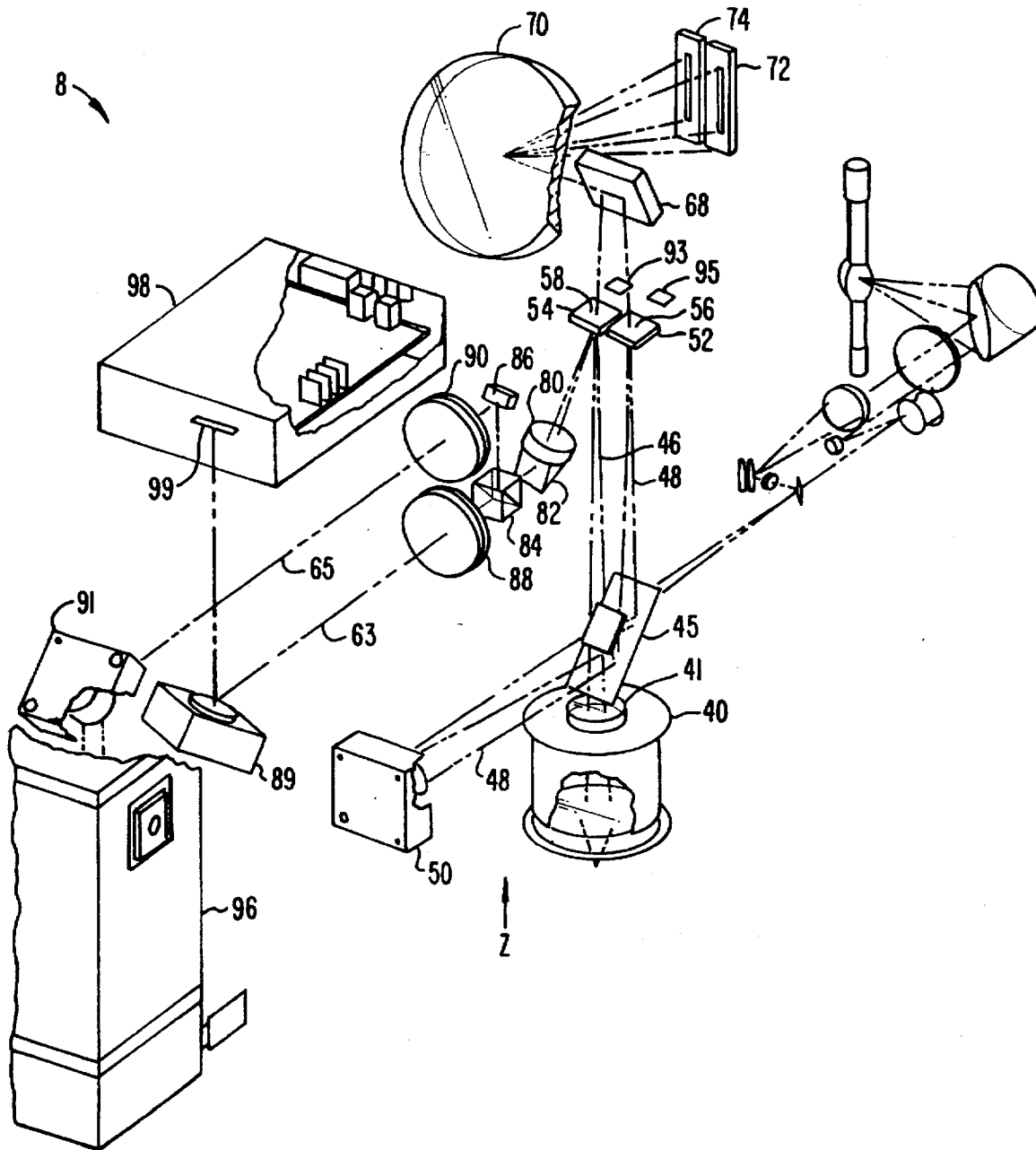


FIG. 3.

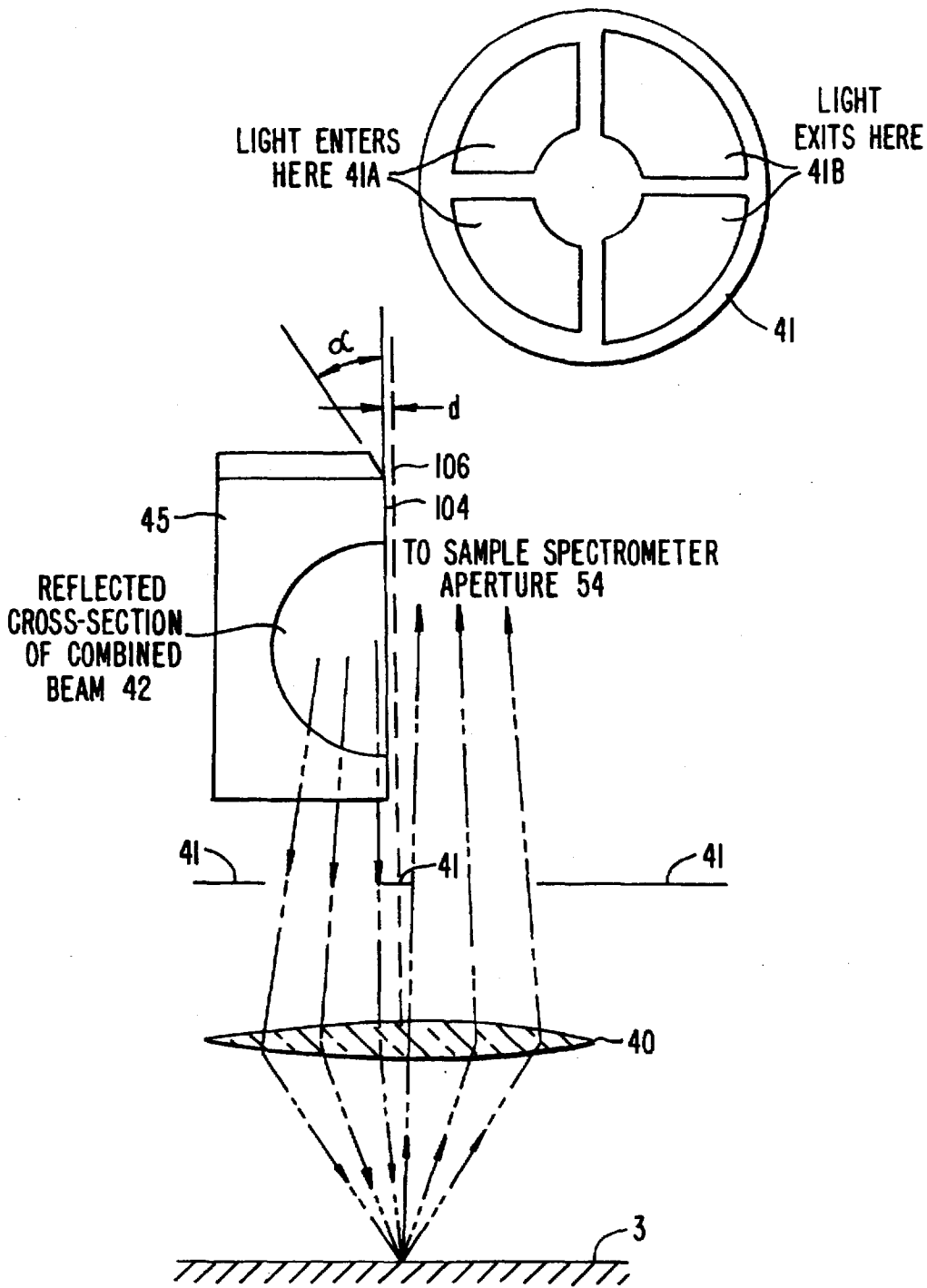


FIG. 4.

# Explore Litigation Insights

Docket Alarm provides insights to develop a more informed litigation strategy and the peace of mind of knowing you're on top of things.

## Real-Time Litigation Alerts



Keep your litigation team up-to-date with **real-time alerts** and advanced team management tools built for the enterprise, all while greatly reducing PACER spend.

Our comprehensive service means we can handle Federal, State, and Administrative courts across the country.

## Advanced Docket Research



With over 230 million records, Docket Alarm's cloud-native docket research platform finds what other services can't. Coverage includes Federal, State, plus PTAB, TTAB, ITC and NLRB decisions, all in one place.

Identify arguments that have been successful in the past with full text, pinpoint searching. Link to case law cited within any court document via Fastcase.

## Analytics At Your Fingertips



Learn what happened the last time a particular judge, opposing counsel or company faced cases similar to yours.

Advanced out-of-the-box PTAB and TTAB analytics are always at your fingertips.

## API

Docket Alarm offers a powerful API (application programming interface) to developers that want to integrate case filings into their apps.

## LAW FIRMS

Build custom dashboards for your attorneys and clients with live data direct from the court.

Automate many repetitive legal tasks like conflict checks, document management, and marketing.

## FINANCIAL INSTITUTIONS

Litigation and bankruptcy checks for companies and debtors.

## E-DISCOVERY AND LEGAL VENDORS

Sync your system to PACER to automate legal marketing.