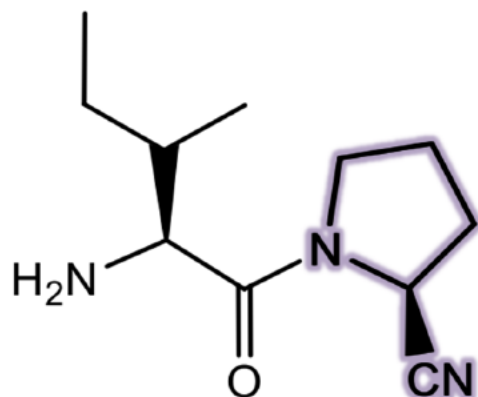
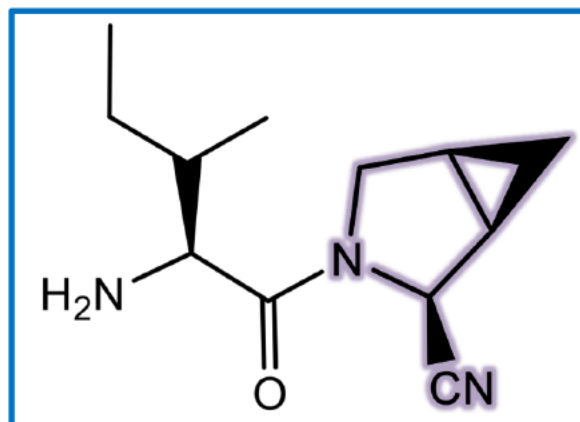


Effects of Cyclopropanation: Magnin (2004)

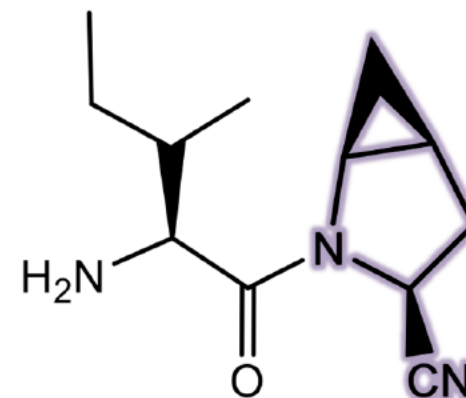
LOCATION Matters for Potency



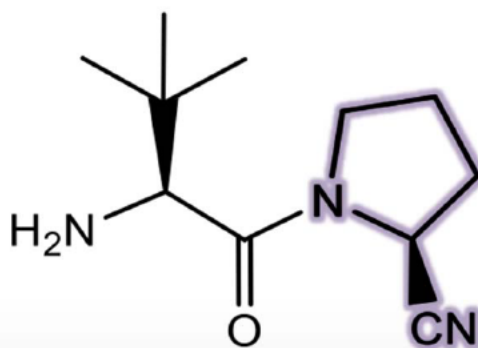
Compound 21
 $K_i = 2 \text{ nM}$



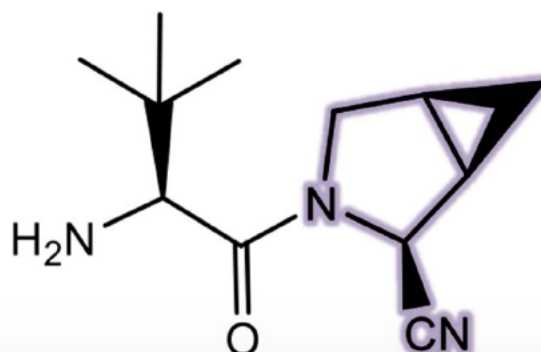
Compound 25 (cis-3,4)
 $K_i = 15 \text{ nM}$



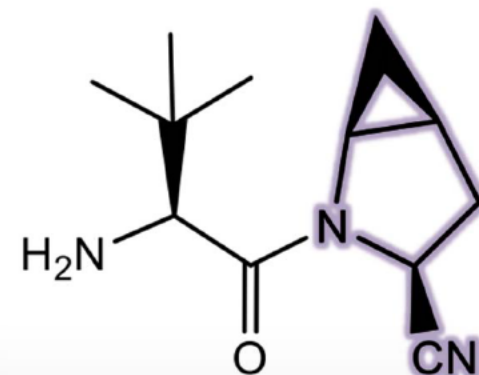
Compound 24 (cis-4,5)
 $K_i = 25 \text{ nM}$



Compound 28
 $K_i = 8 \text{ nM}$



Compound 30 (cis-3,4)
 $K_i = 14 \text{ nM}$



Compound 29 (cis-4,5)
 $K_i = 7 \text{ nM}$