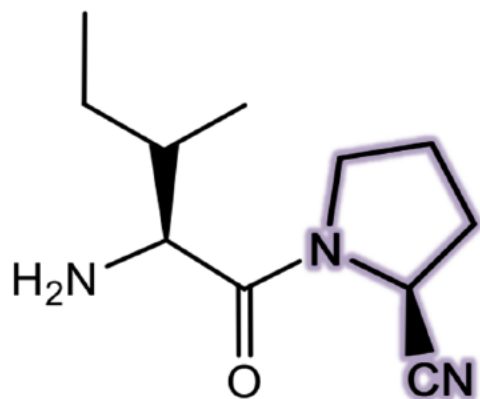


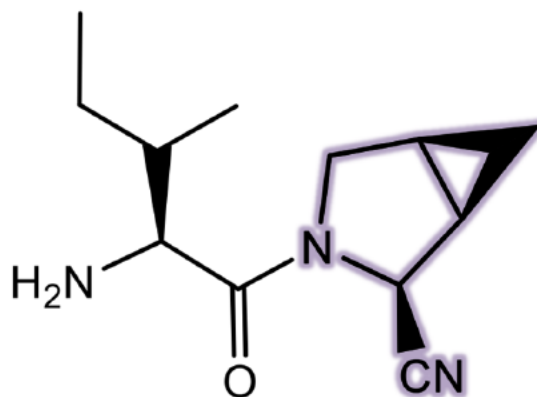
Effects of Cyclopropanation: Magnin (2004)

LOCATION Matters for Stability



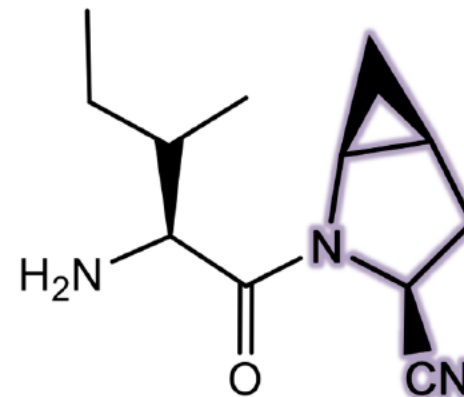
Compound 21

$t_{1/2} = 5 \text{ h}$



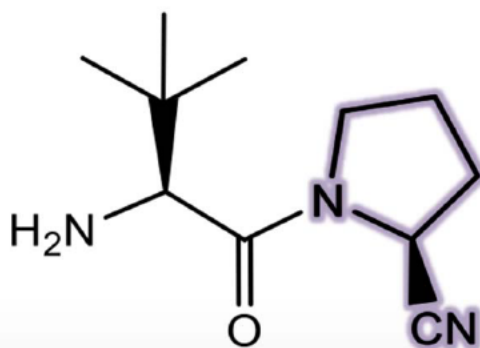
Compound 25 (*cis*-3,4)

$t_{1/2} = 4 \text{ h}$



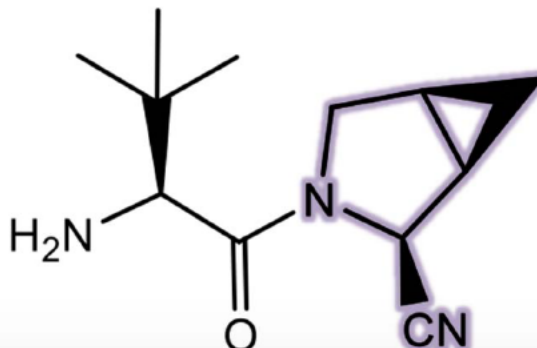
Compound 24 (*cis*-4,5)

$t_{1/2} = 22 \text{ h}$



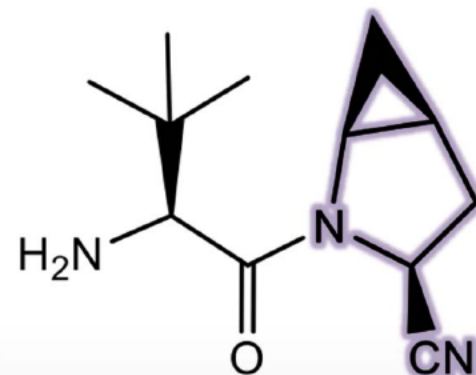
Compound 28

$t_{1/2} = 27 \text{ h}$



Compound 30 (*cis*-3,4)

$t_{1/2} = 4 \text{ h}$



Compound 29 (*cis*-4,5)

$t_{1/2} = 42 \text{ h}$