

NEMA WD 6
WIRING DEVICES—
DIMENSIONAL
SPECIFICATIONS

Approved as an American National Standard
ANSI Approval Date: August 20, 2008

NEMA Standards Publication ANSI/NEMA WD 6-2002 (R2008)

Wiring Devices—Dimensional Specifications

Published by

National Electrical Manufacturers Association

1300 North 17th Street
Suite 1752
Rosslyn, Virginia 22209

www.nema.org

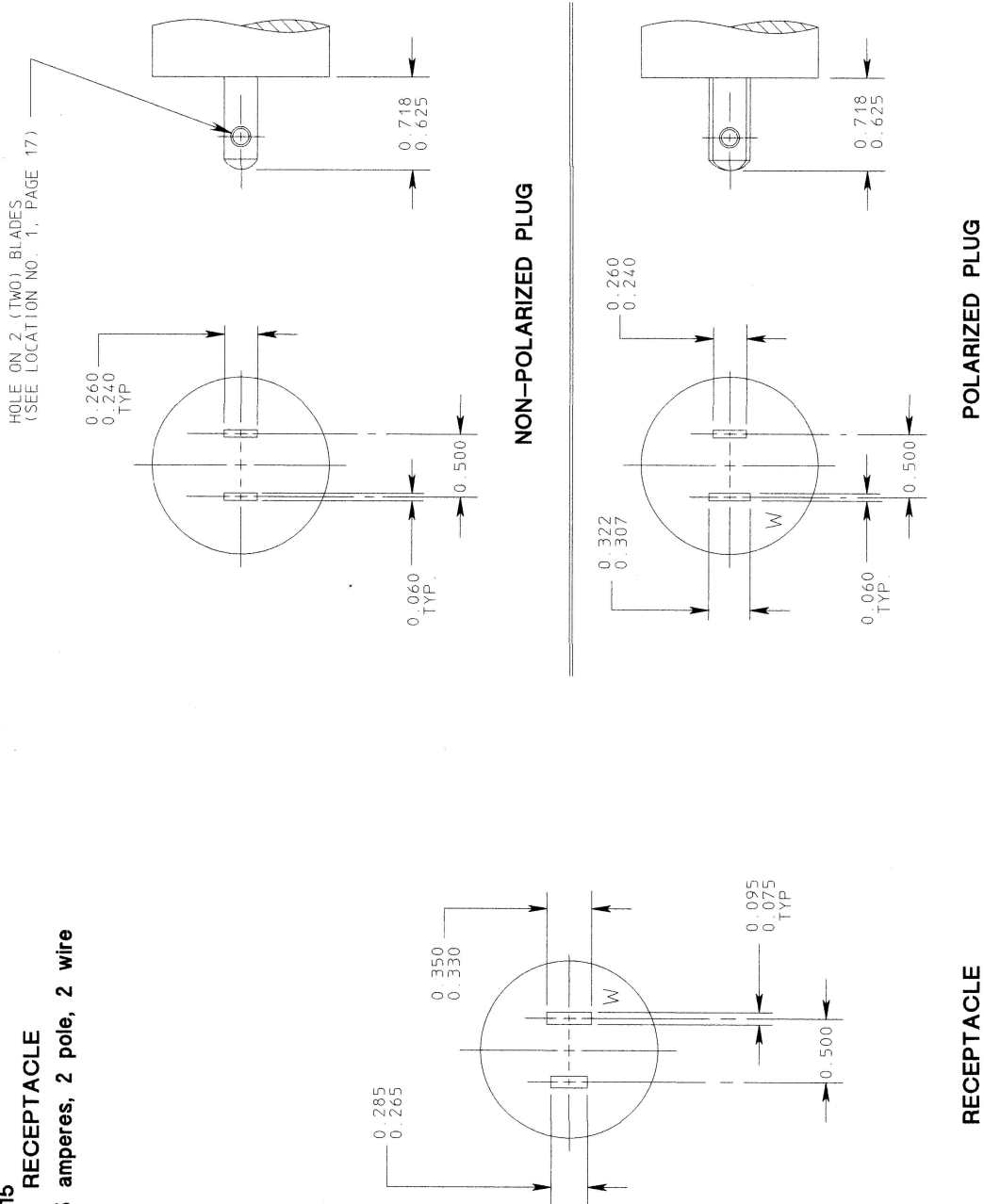
© Copyright 2008 by the National Electrical Manufacturers Association. All rights including translation into other languages, reserved under the Universal Copyright Convention, the Berne Convention for the Protection of Literary and Artistic Works, and the International and Pan American Copyright Conventions.

Introduction

Throughout this publication the following shall apply:

1. All dimensions are in inches, unless otherwise specified.
2. Decimal dimensions without tolerances shall be subject to a plus or minus 0.005-inch tolerance.
3. Angular dimensions without tolerances shall be subject to a plus or minus 1 degree tolerance.
4. "G" denotes equipment ground.
5. "W" denotes system ground.
6. Leading edges of plug blades shall be free of burrs and sharp edges.
7. All slots and slot tolerances are symmetrically located about centerlines.
8. Female contacts associated with plug blades that are 0.125 minimum longer than other blades are engaged prior to the other female contacts.
9. Configurations utilized on alternating current systems are limited to 50 or 60 Hertz, unless otherwise specified.
10. Dimensions shown in these standards are for the purpose of interchangeability, and do not preclude other designs.
11. The electrical ratings of the configurations in these standards are AC and DC, unless specifically stated 'AC' or 'DC'.

FIGURE 1-15
PLUG AND RECEPTACLE
125 volts, 15 amperes, 2 pole, 2 wire



NOTE: FOR TYPICAL DUPLEX OR RECTANGULAR STYLE DEVICES SEE PAGES NO. 10, 11, AND 12.

© Copyright 2002 by the National Electrical Manufacturers Association.

