

[54] SYSTEM FOR CONTROLLING IGNITION TIMING AND FUEL INJECTION TIMING OF A TWO-CYCLE ENGINE

[75] Inventor: Koji Morikawa, Tokyo, Japan

[73] Assignee: Fuji Jukogyo Kabushiki Kaisha, Tokyo, Japan

[21] Appl. No.: 601,937

[22] Filed: Oct. 22, 1990

[30] Foreign Application Priority Data

Nov. 22, 1989 [JP] Japan 1-306079

[51] Int. Cl.⁵ F02M 67/00; F02P 5/15

[52] U.S. Cl. 123/305; 60/285; 123/73 C; 123/425; 123/435

[58] Field of Search 123/73 C, 295, 305, 123/425, 435, 440, 489; 60/274, 276, 284, 285

[56] References Cited

U.S. PATENT DOCUMENTS

3,799,134	3/1974	Griese	123/407
3,949,551	4/1976	Eichler et al.	60/285 X
4,111,010	9/1978	Minami	60/285 X
4,165,610	8/1979	Iizuka et al.	60/285 X

FOREIGN PATENT DOCUMENTS

62-124211 8/1987 Japan .

Primary Examiner—Tony M. Argenbright
Attorney, Agent, or Firm—Martin A. Farber

[57] ABSTRACT

A temperature sensor is provided for detecting temperature of exhaust gas in an exhaust passage of a two-cycle engine. The temperature is compared with a reference temperature for activating a catalytic converter. When the temperature is lower than the reference temperature, the ignition timing and the fuel injection timing of the engine are retarded. The quantity of injected fuel is increased so as to compensate reduction of engine power caused by retarding the ignition timing.

3 Claims, 4 Drawing Sheets

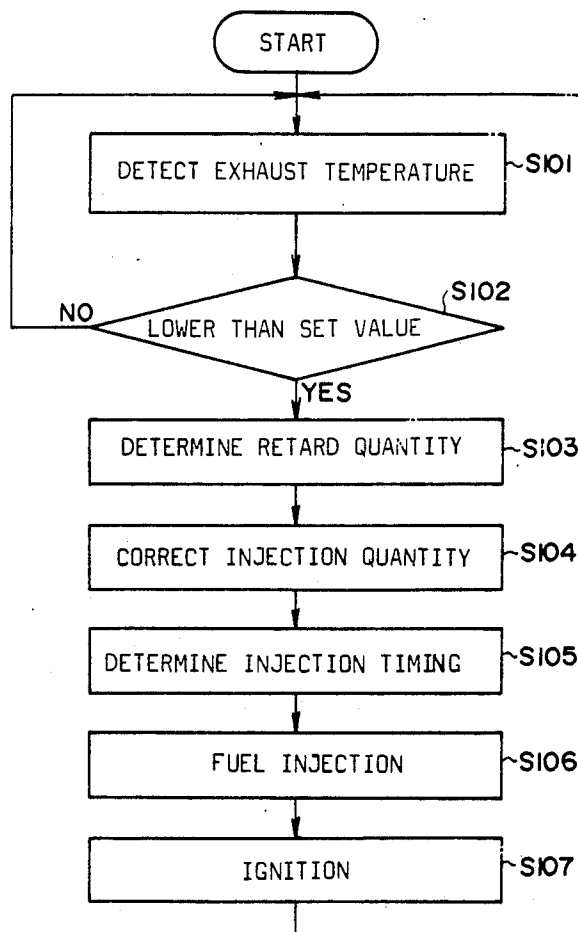


FIG. 1

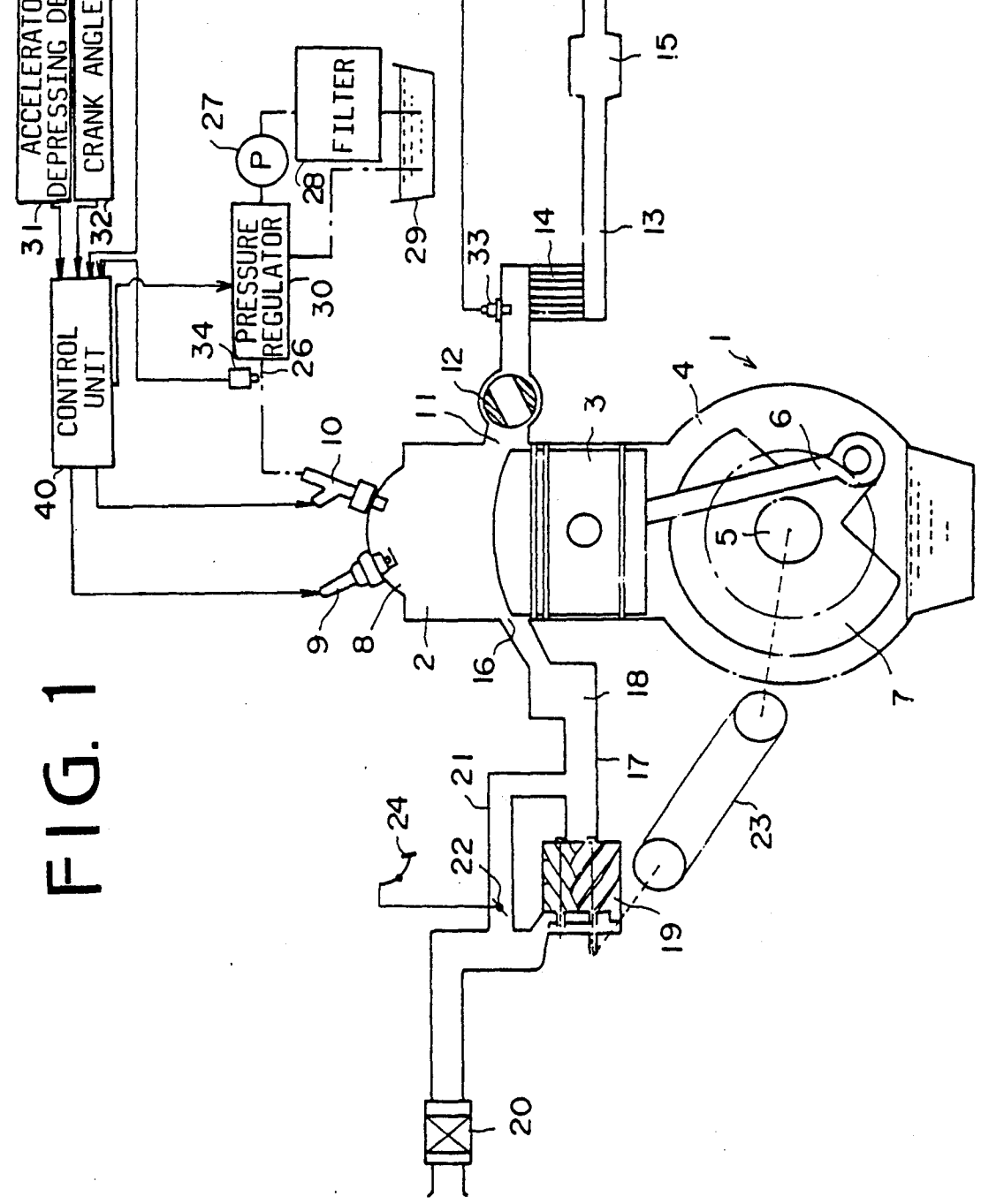


FIG. 2

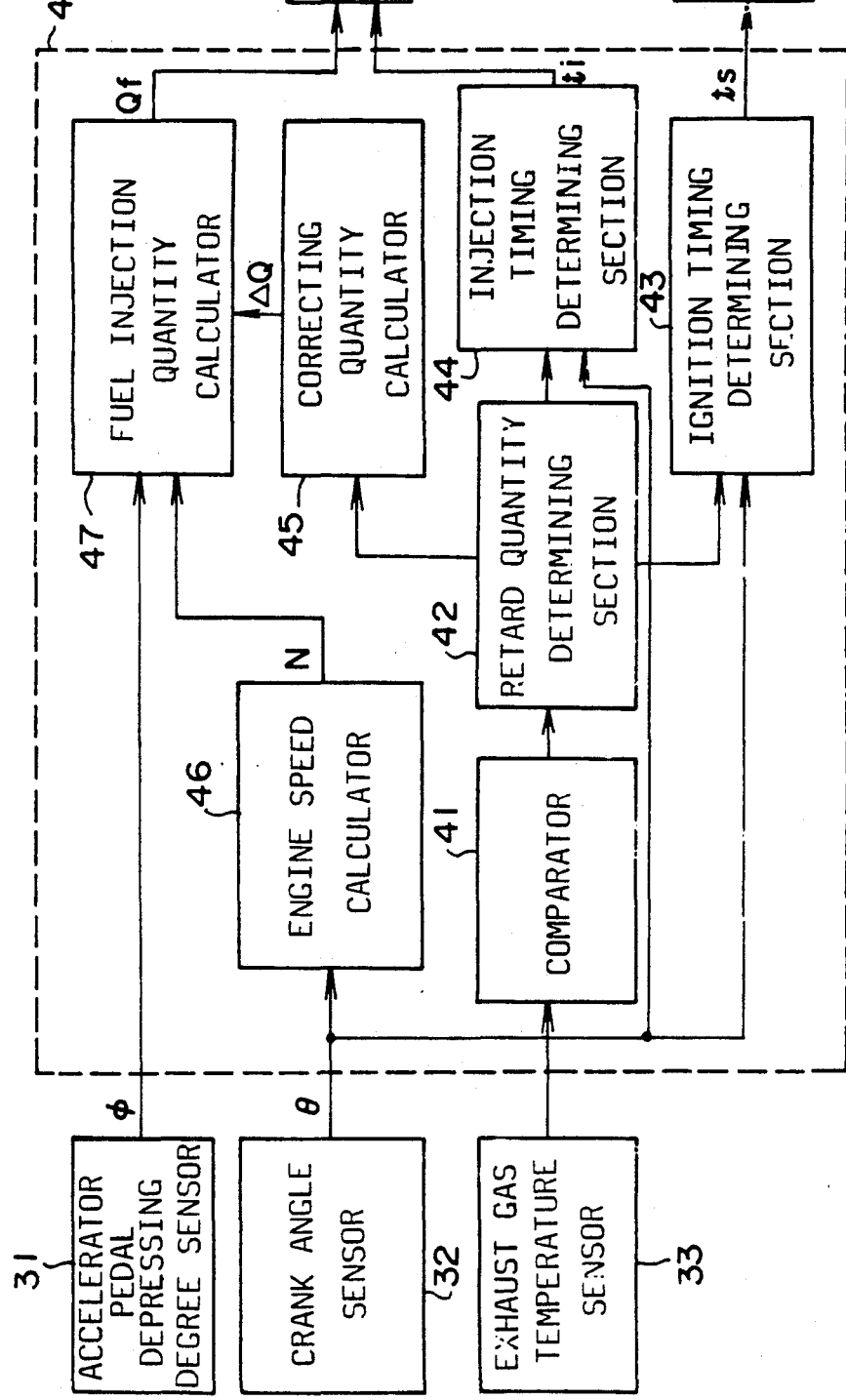


FIG. 3

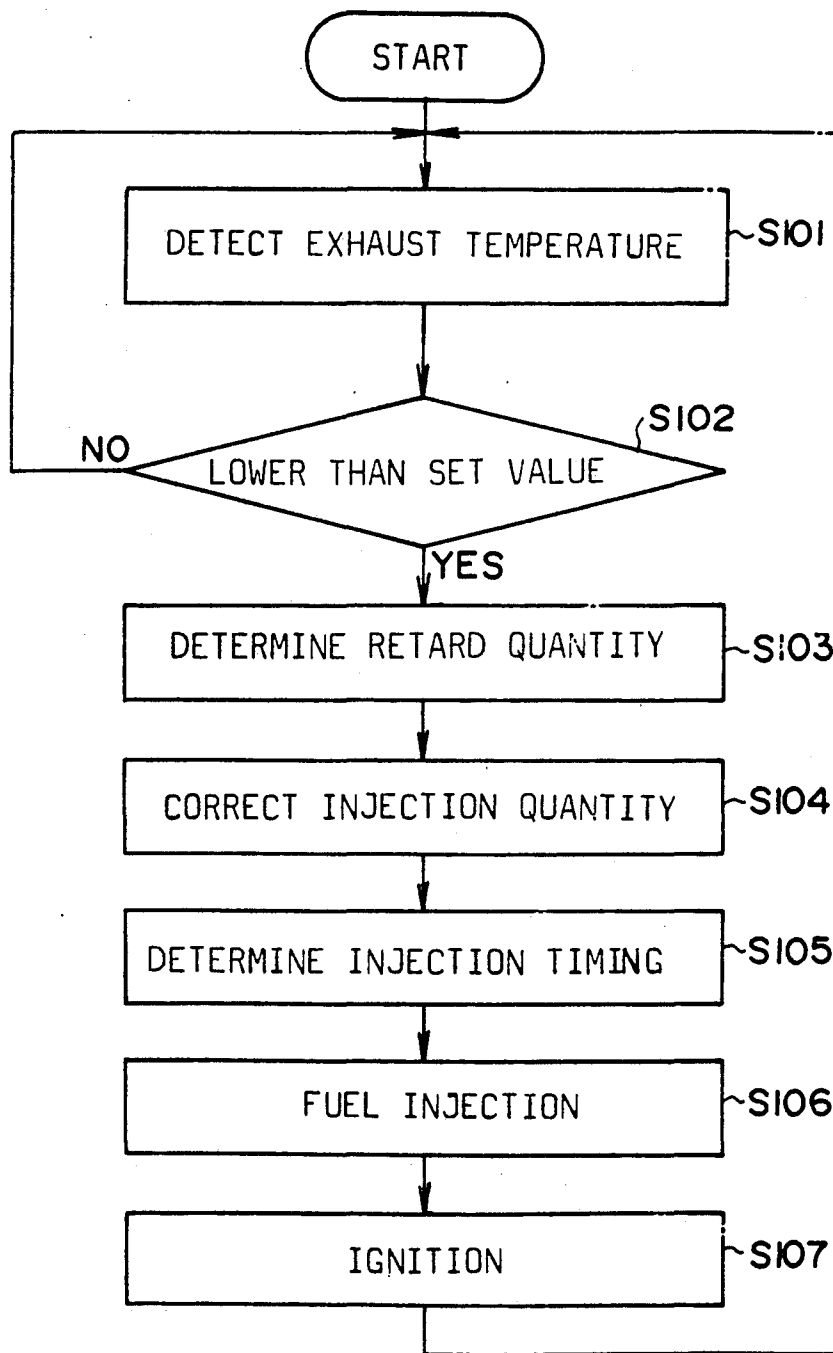


FIG. 4

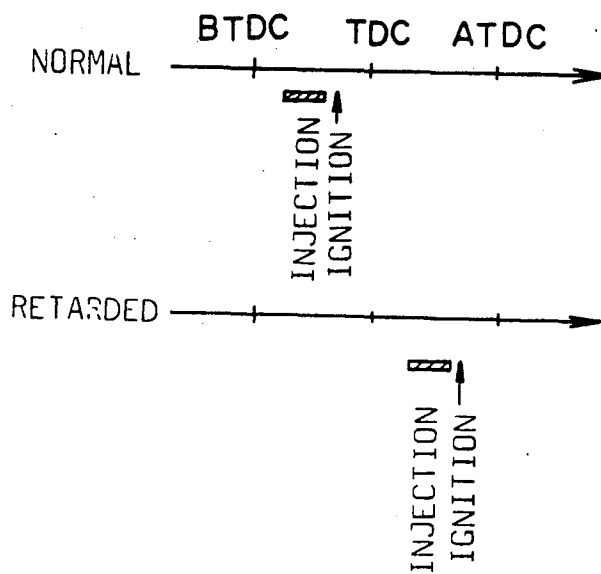


FIG. 5a

NECESSARY INJECTION
TIMING
ADVANCE
RETARD

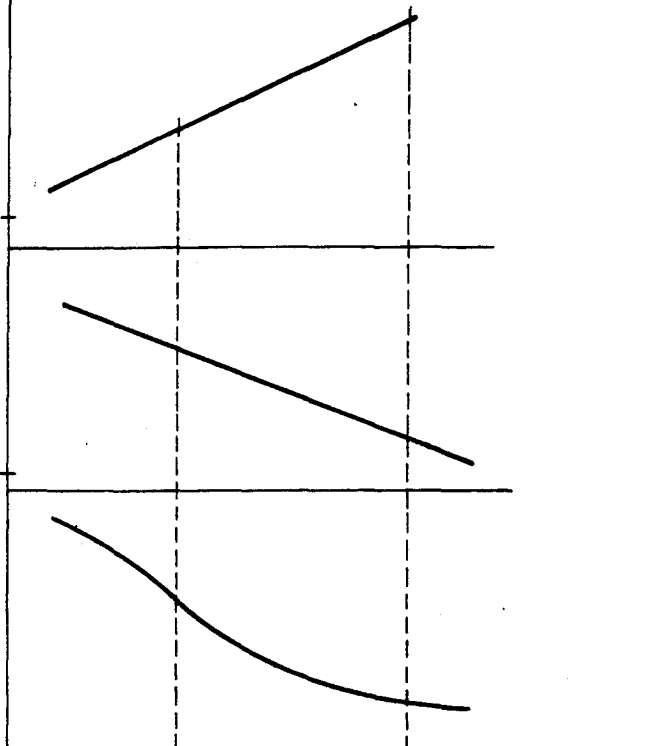
FIG. 5b

FUEL
INJECTION
QUANTITY

FIG. 5c

EXHAUST GAS
TEMPERATURE

RETARD IGNITION (NORMAL) ADVANCE
TIMING



Explore Litigation Insights

Docket Alarm provides insights to develop a more informed litigation strategy and the peace of mind of knowing you're on top of things.

Real-Time Litigation Alerts



Keep your litigation team up-to-date with **real-time alerts** and advanced team management tools built for the enterprise, all while greatly reducing PACER spend.

Our comprehensive service means we can handle Federal, State, and Administrative courts across the country.

Advanced Docket Research



With over 230 million records, Docket Alarm's cloud-native docket research platform finds what other services can't. Coverage includes Federal, State, plus PTAB, TTAB, ITC and NLRB decisions, all in one place.

Identify arguments that have been successful in the past with full text, pinpoint searching. Link to case law cited within any court document via Fastcase.

Analytics At Your Fingertips



Learn what happened the last time a particular judge, opposing counsel or company faced cases similar to yours.

Advanced out-of-the-box PTAB and TTAB analytics are always at your fingertips.

API

Docket Alarm offers a powerful API (application programming interface) to developers that want to integrate case filings into their apps.

LAW FIRMS

Build custom dashboards for your attorneys and clients with live data direct from the court.

Automate many repetitive legal tasks like conflict checks, document management, and marketing.

FINANCIAL INSTITUTIONS

Litigation and bankruptcy checks for companies and debtors.

E-DISCOVERY AND LEGAL VENDORS

Sync your system to PACER to automate legal marketing.