



US005978594A

United States Patent [19]

[11] Patent Number: **5,978,594**

Bonnell et al.

[45] Date of Patent: **Nov. 2, 1999**

[54] SYSTEM FOR MANAGING COMPUTER RESOURCES ACROSS A DISTRIBUTED COMPUTING ENVIRONMENT BY FIRST READING DISCOVERY INFORMATION ABOUT HOW TO DETERMINE SYSTEM RESOURCES PRESENCE	5,442,791 8/1995 Wrabetz et al. 395/650 5,463,775 10/1995 DeWitt et al. 395/184.01 5,471,617 11/1995 Farrand et al. 395/700 5,483,468 1/1996 Chen et al. 364/551.01 5,491,796 2/1996 Wanderer et al. 395/200.09
---	--

FOREIGN PATENT DOCUMENTS

[75] Inventors: David N. Bonnell , Houston; Kirill L. Tatarinov ; Martin W. Picard , both of Bellaire, all of Tex.	57146361 of 0000 Japan . 60252952 of 0000 Japan . 61286959 of 0000 Japan .
---	--

OTHER PUBLICATIONS

[73] Assignee: BMC Software, Inc. , Houston, Tex.	DDS/Patrol, ver. 1.3 Installation and User's Guide; Patrol Software Pty. Ltd.; Jun. 10, 1993.
[21] Appl. No.: 08/812,860	Communicating Event Information Between Applications in A Multitasking Environment; IBM Technical Disclosure Bulletin, p. 4832 (Apr., 1987).
[22] Filed: Mar. 6, 1997	

Related U.S. Application Data

[63] Continuation of application No. 08/316,034, Sep. 30, 1994, abandoned.	
[51] Int. Cl.⁶	G06F 13/10
[52] U.S. Cl.	395/837; 395/825
[58] Field of Search	395/200.53, 200.54, 395/500, 712, 825, 837; 364/242

(List continued on next page.)

Primary Examiner—Thomas C. Lee
Assistant Examiner—Chien Yuan
Attorney, Agent, or Firm—Jenkins & Gilchrist, P.C.

[57] ABSTRACT

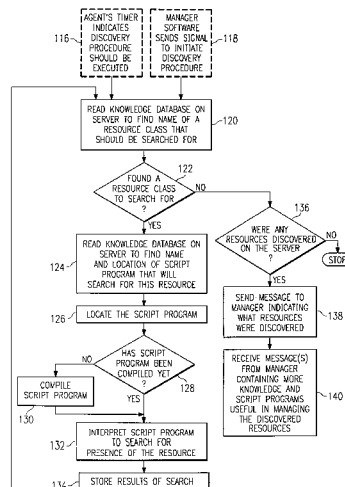
A method and apparatus are disclosed for managing a computer network. A manager software system is installed on a network management computer system within the network, and one agent software system is installed on each of the server computer systems in the network. A knowledge module in the form of a text file is stored on the network manager computer system so that the manager software system can transmit knowledge to the various agent software systems throughout the network, for use by the agents in monitoring and managing the server on which they are installed. Interpretable script language programs are present on all computers in the network, expanding and customizing the functionality of the agent software systems. A method is disclosed for using the high level interpretable script language programs in connection with the agent software systems for discovering resources on the network, monitoring aspects of resources, and taking recovery actions automatically in the event of an alarm condition.

References Cited

U.S. PATENT DOCUMENTS

4,780,821	10/1988	Crossley	364/200
4,866,664	9/1989	Burkhardt, Jr. et al.	364/900
4,924,378	5/1990	Hershey et al.	364/200
5,062,037	10/1991	Shorter et al.	364/200
5,079,695	1/1992	Dysart et al.	395/700
5,109,486	4/1992	Seymour	395/200
5,129,086	7/1992	Coyle, Jr. et al.	395/650
5,142,683	8/1992	Burkhardt, Jr. et al.	395/725
5,167,035	11/1992	Mann et al.	395/575
5,237,684	8/1993	Record et al.	395/650
5,291,591	3/1994	Kawano et al.	395/600
5,291,597	3/1994	Shorter et al.	395/650
5,310,323	5/1994	Maeurer et al.	395/650
5,315,711	5/1994	Barone et al.	395/275
5,317,742	5/1994	Bapat	395/700
5,367,635	11/1994	Bauer et al.	395/200
5,369,570	11/1994	Parad	364/401

14 Claims, 11 Drawing Sheets



OTHER PUBLICATIONS

- Having a Network Nightmare? Let the Software Take Over, Fisher, Lawrence M.; The New York Times, Sep. 18, 1994; p. F8.
- The Simple Book, An Introduction to Internet Management; Rose, Marshall T.; 2d ed.; 1994.
- DEC, Development and distribution agreement between DEC and Patrol Software, Oct. 1993.
- Graeme, Philip, Developer Down Under Hits Distributed Shore, Software Magazine, v 13 n9, Jun. 199.
- Digital Equipment Corp., "Polycenter System Watchdog (V.1.0)", Computer Select, Nov. 1993.
- "Automatic System Configuration Determination Program", IBM TDB vol. 13, pp. 2722-2724, Feb. 1971.
- Yemini, Yechiam, Netmate: Management of Complex Distributed Networked Systems, IEEE, p. 173, 1991.
- Drake, Peter, Using SNMP to Manage Networks, IEEE, pp. 2/1-2/4, 1991.
- Kiriha, Yoshiaki, An Automatic Generation of Management Information Base for OSI based Network Management System, IEEE, pp. 0649-0653, 1991.
- Agoulmine, Nazim, A System Architecture for Updating Management Information in Heterogeneous Networks, IEEE, pp. 999-1003, 1992.
- Ahmed M., B-ISDN Customer Network Management Framework, IEEE, pp. 36-41, 1992.
- Zhang, Xinxin, X.500 Directory and OSI Management, IEEE, pp. 1106-1110, 1992.
- Zhang, Xinxin, Supporting Network Management Through Distributed Directory Service, IEEE, pp. 1000-1010, May 1994.
- Wu, Shyhtsun F., EMOSY: An SNMP Protocol Object Generator for the Protocol Independent MIB, IEEE, pp. 133-144, 1994.
- O'Mahony, Donal, Security Considerations in a Network Management Environment, IEEE, pp. 12-17, 1994.
- Leon, Benjamin J. Leon, Network Management Information for System Control, IEEE, pp. 1553-1557, 1993.
- Abeck, Sebastian, Implementing OSI and Internet Managed Object Libraries, IEEE, pp. 1197-1201, 1993.
- Miyauchi, Naoto, An Implementation of Management Information Base, IEEE, pp. 318-321, 1991.

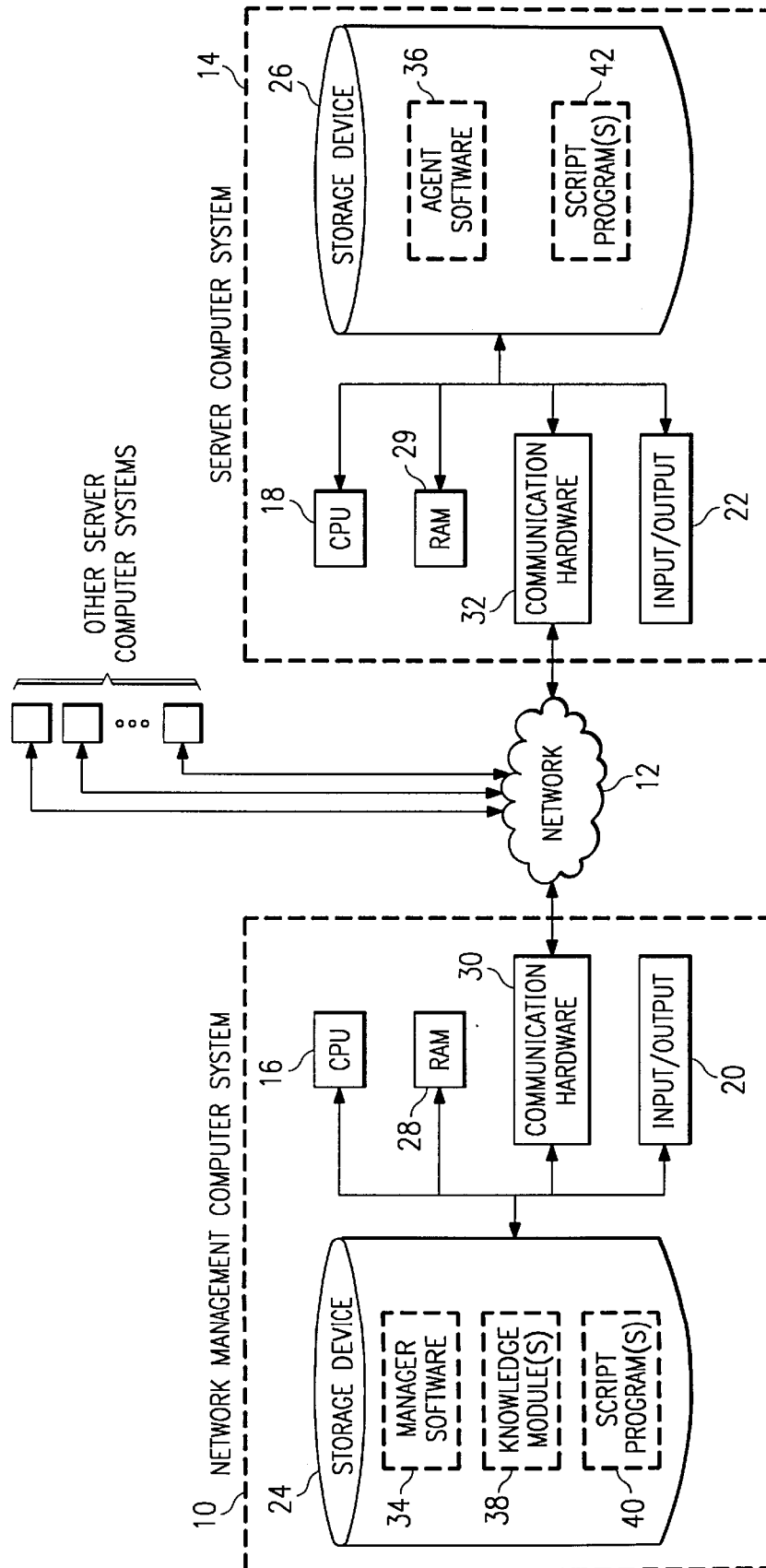
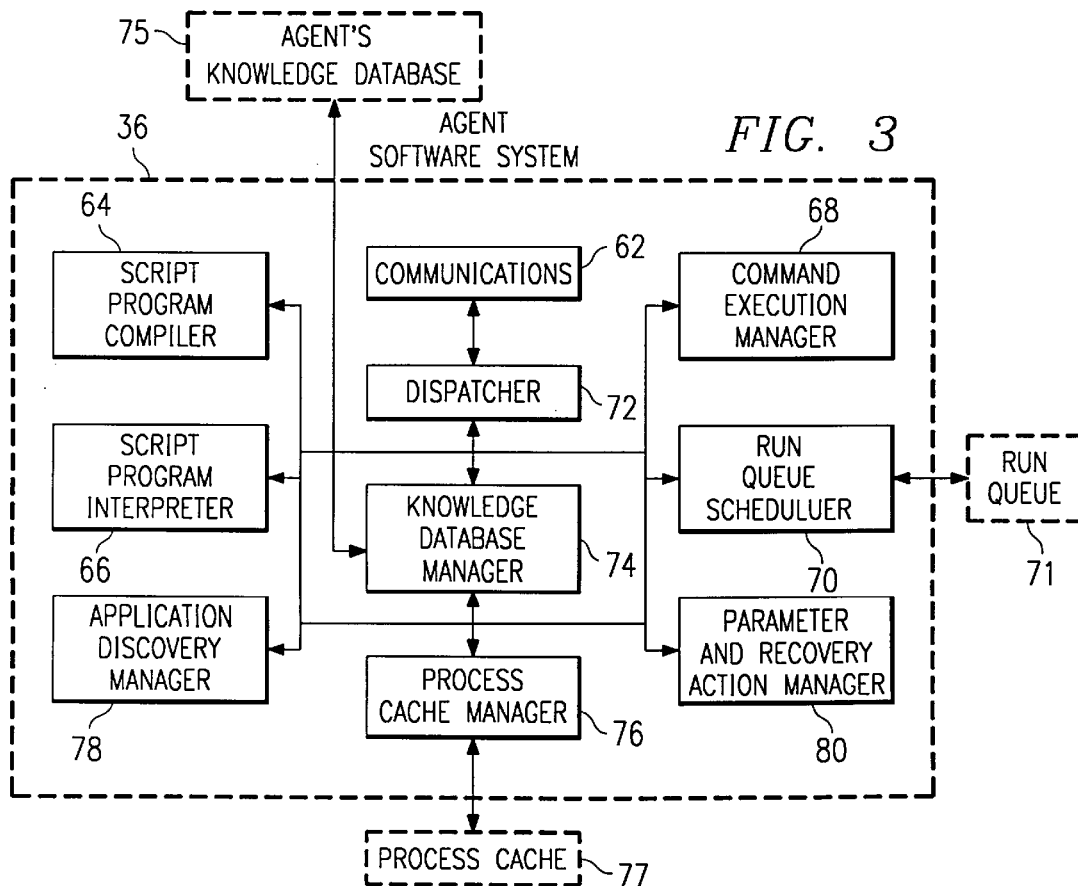
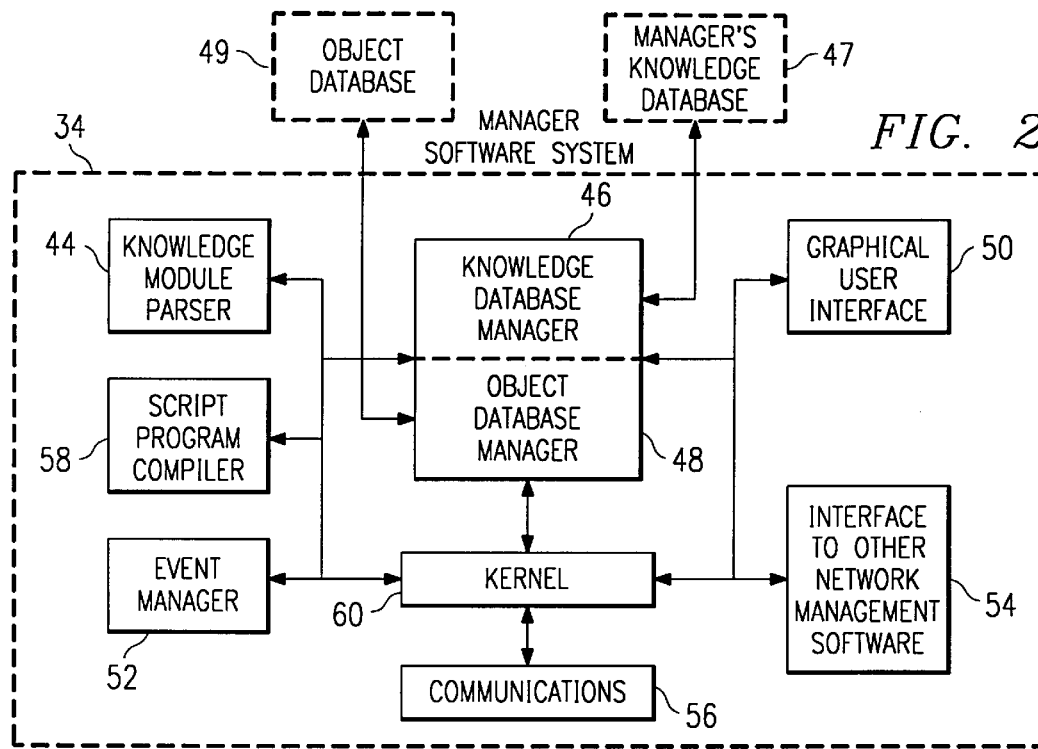
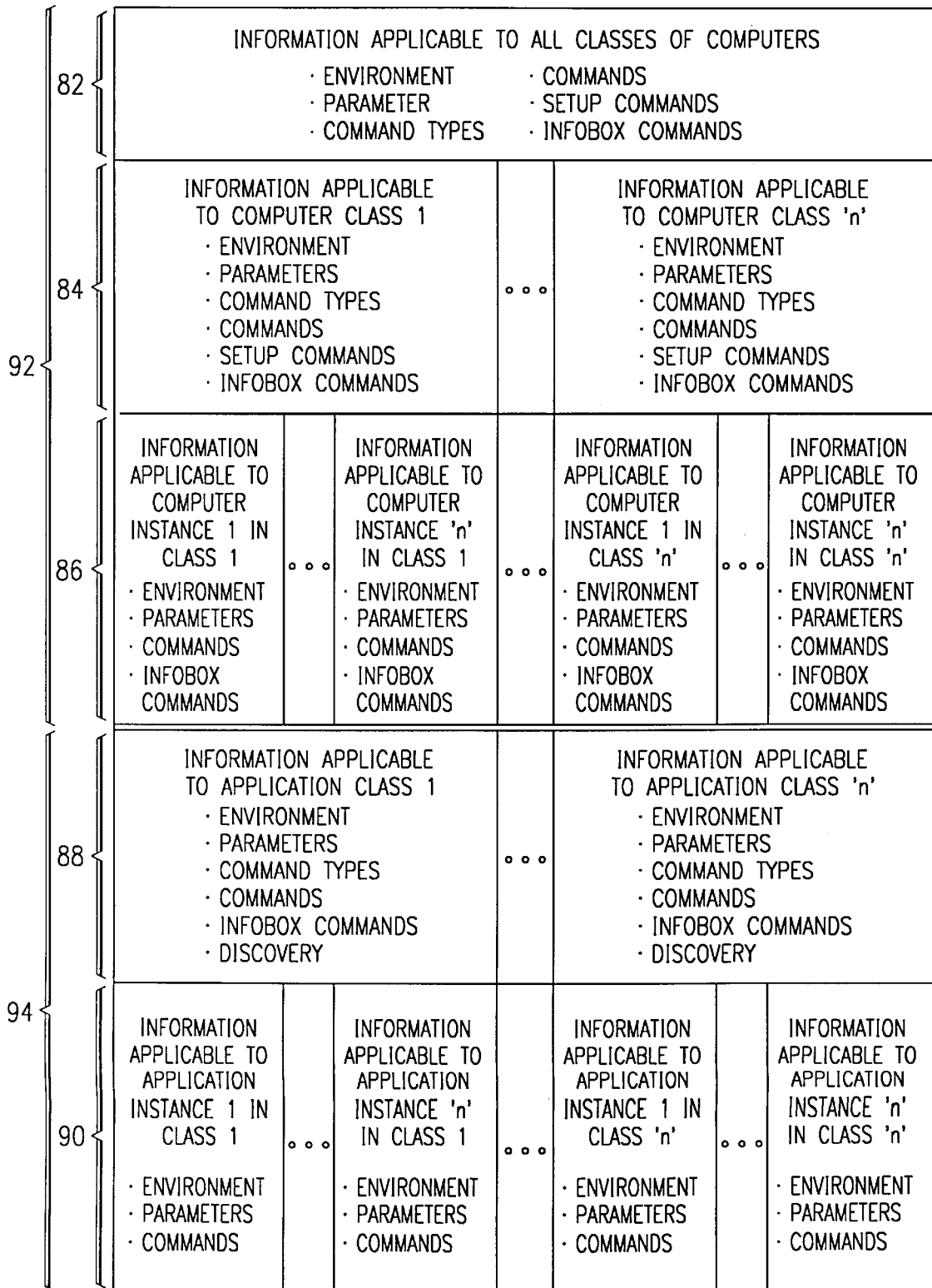


FIG. 1



38

FIG. 4



Explore Litigation Insights

Docket Alarm provides insights to develop a more informed litigation strategy and the peace of mind of knowing you're on top of things.

Real-Time Litigation Alerts



Keep your litigation team up-to-date with **real-time alerts** and advanced team management tools built for the enterprise, all while greatly reducing PACER spend.

Our comprehensive service means we can handle Federal, State, and Administrative courts across the country.

Advanced Docket Research



With over 230 million records, Docket Alarm's cloud-native docket research platform finds what other services can't. Coverage includes Federal, State, plus PTAB, TTAB, ITC and NLRB decisions, all in one place.

Identify arguments that have been successful in the past with full text, pinpoint searching. Link to case law cited within any court document via Fastcase.

Analytics At Your Fingertips



Learn what happened the last time a particular judge, opposing counsel or company faced cases similar to yours.

Advanced out-of-the-box PTAB and TTAB analytics are always at your fingertips.

API

Docket Alarm offers a powerful API (application programming interface) to developers that want to integrate case filings into their apps.

LAW FIRMS

Build custom dashboards for your attorneys and clients with live data direct from the court.

Automate many repetitive legal tasks like conflict checks, document management, and marketing.

FINANCIAL INSTITUTIONS

Litigation and bankruptcy checks for companies and debtors.

E-DISCOVERY AND LEGAL VENDORS

Sync your system to PACER to automate legal marketing.