

UNITED STATES PATENT AND TRADEMARK OFFICE

BEFORE THE PATENT TRIAL AND APPEAL BOARD

**APPLE INC. and MOTOROLA MOBILITY, LLC,
Petitioners,**

v.

**GLOBAL TOUCH SOLUTIONS, LLC,
Patent Owner**

**Case IPR2015-01175
Patent 8,288,952 B2**

**PATENT OWNER'S
DEMONSTRATIVE EXHIBITS**

Patent Owner

Global Touch Solutions, LLC

Demonstratives

IPR 2015-01175
US Patent No. 8,288,952

August 3, 2016

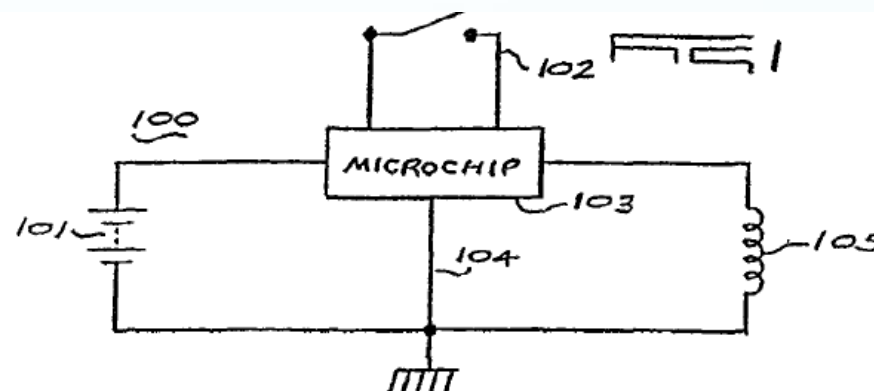
Instituted Grounds

- **Ground 1:** Claims 1-3, 16, 17, 19, 22-24, 26, 27, and 38-40 obvious under 35 U.S.C. § 103(a) over U.S. Patent No. 5,898,290 ("Beard") (Ex. 1005) in view of U.S. Patent No. 5,955,869 ("Rathmann") (Ex. 1006); and
- **Ground 2:** Claims 4 and 14 obvious under 35 U.S.C. § 103(a) over Beard in view of Rathmann and U.S. Patent No. 5,710,728 ("Danielson") (Ex. 1007).

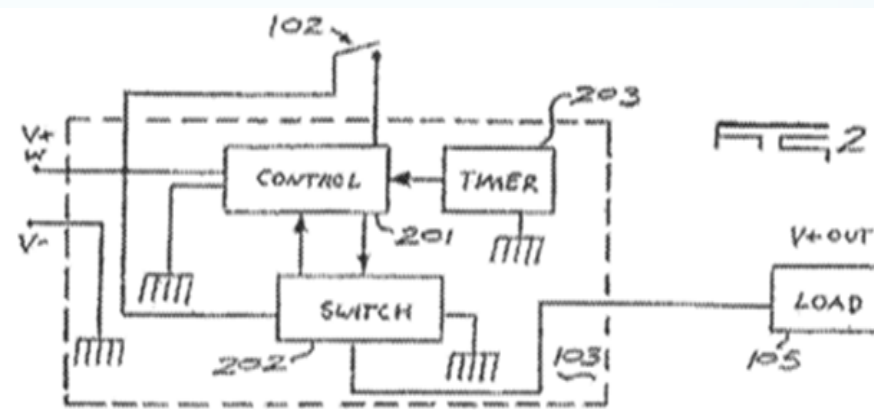
'952 Patent: Overview

The structure and operational parameters of such a microchip 103 are explained in greater detail below with respect to FIG. 2. As shown in FIG. 1, power is supplied to microchip 103 by power source 101. When an operator activates input switch 102 to the "on" position it represents a command which is communicated to microchip 103. Input means 102 requires very low current in preferred embodiments. In one embodiment of the invention, microchip control/reset means 101 simply allows the current provided from power source 101 to load 105 in an unimpeded manner when the MMI switch 102 is activated, and, in the case of a flashlight, illumination is obtained. It is important to recognize, however, that it is control circuit 201 which activates current switch 202 upon acting on an input from MMI switch 102. Unlike heretofore known prior art devices, activating switch 102 does not conduct current to load 105, but is only a command input mechanism which can, according to the invention, operate on very low current. For example, according to the invention, touch sensor input or carbon coated membrane type switch devices are preferred.

Ex. 1001 at 7:12-31 (cited in Paper 14 at 4)



Ex. 1001 at FIG. 1 (cited in Paper 14 at 4)

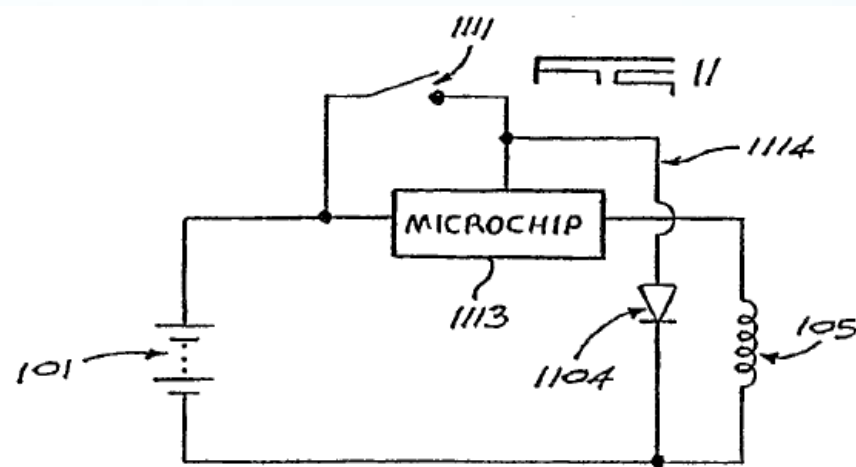


Ex. 1001 at FIG. 2 (cited in Paper 14 at 17)

'952 Patent: Overview

According to another embodiment of the present invention, an output may be provided to indicate a condition, e.g. a battery is in good or bad condition. It may also be suitable to assist in locating a device, e.g. but not limited to a flashlight, in the dark. This may be a separate output pin or may be, according to another embodiment, shared with the MMI switch input. (See FIG. 11) This output or indicator may be an LED. Referring to FIG. 11, indicator/output device 1104 may, for example, be an LED. When microchip 1113 pulls the line 1114 to high, the LED 1104 shines. LED 1104 may also shine when switch 1111 is closed by the user. However, since that is only a momentary closure, this should not create a problem.

Ex. 1001 at 9:46-57 (cited in Paper 14 at 6)



Ex. 1001 at FIG. 11 (cited in Paper 14 at 6)

Explore Litigation Insights

Docket Alarm provides insights to develop a more informed litigation strategy and the peace of mind of knowing you're on top of things.

Real-Time Litigation Alerts



Keep your litigation team up-to-date with **real-time alerts** and advanced team management tools built for the enterprise, all while greatly reducing PACER spend.

Our comprehensive service means we can handle Federal, State, and Administrative courts across the country.

Advanced Docket Research



With over 230 million records, Docket Alarm's cloud-native docket research platform finds what other services can't. Coverage includes Federal, State, plus PTAB, TTAB, ITC and NLRB decisions, all in one place.

Identify arguments that have been successful in the past with full text, pinpoint searching. Link to case law cited within any court document via Fastcase.

Analytics At Your Fingertips



Learn what happened the last time a particular judge, opposing counsel or company faced cases similar to yours.

Advanced out-of-the-box PTAB and TTAB analytics are always at your fingertips.

API

Docket Alarm offers a powerful API (application programming interface) to developers that want to integrate case filings into their apps.

LAW FIRMS

Build custom dashboards for your attorneys and clients with live data direct from the court.

Automate many repetitive legal tasks like conflict checks, document management, and marketing.

FINANCIAL INSTITUTIONS

Litigation and bankruptcy checks for companies and debtors.

E-DISCOVERY AND LEGAL VENDORS

Sync your system to PACER to automate legal marketing.