

[54] SMART BATTERY ALGORITHM FOR REPORTING BATTERY PARAMETERS TO AN EXTERNAL DEVICE

4,949,046 8/1990 Seyfang .
4,961,043 10/1990 Koencck .
4,965,738 10/1990 Bauer et al. 364/483

(List continued on next page.)

[75] Inventors: Matthew P. Hull, Jamestown, R.I.; Alwyn H. Taylor, Wellesley Hills, Mass.; Louis W. Hruska, Northboro, Mass.; Daniel D. Friel, Woburn, Mass.

OTHER PUBLICATIONS

M. Bullinger, "Quick Charging with Intelligence an IC Controls NiCd and NiHM Battery Chargers", Elektronik, vol. 42, No. 6, pp. 74-77 (1993).
P. Guerle, "Integrated Circuits for Rapid Chargers", Electronique Radio Plans, No. 543, pp. 57-64 (1993).

[73] Assignee: Duracell, Inc., Bethel, Conn.

Primary Examiner—Peter S. Wong
Assistant Examiner—Gregory J. Toatley, Jr.
Attorney, Agent, or Firm—Scully, Scott, Murphy & Presser

[21] Appl. No.: 318,004

[22] Filed: Oct. 4, 1994

[51] Int. Cl. 6 H02J 7/04

[52] U.S. Cl. 320/48; 320/43; 320/35; 320/32; 364/483; 429/90; 324/426

[58] Field of Search 320/5, 19, 20, 320/22, 30, 35, 48; 324/426; 365/96, 106

[57] ABSTRACT

A smart battery which provides electrical power and which reports predefined battery parameters to an external device having a power management system, includes: at least one rechargeable cell connected to a pair of terminals to provide electrical power to an external device during a discharge mode and to receive electrical power during a charge mode, as provided or determined by the remote device; a data bus for reporting predefined battery identification and charge parameters to the external device; analog devices for generating analog signals representative of battery voltage and current at said terminals, and an analog signal representative of battery temperature at said cell; a hybrid integrated circuit (IC) having a microprocessor for receiving the analog signals and converting them to digital signals representative of battery voltage, current and temperature, and calculating actual charge parameters over time from the digital signals, the calculations including one calculation according to the following algorithm;

CAP_rem = CAP_FC - \sum I_d \Delta t - \sum I_s \Delta t + \sum \epsilon_c I_c \Delta t_c

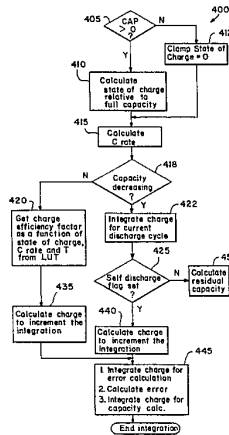
wherein \epsilon_c is a function of battery current and temperature; and I_s is a function of battery temperature and CAP_FC. Superimposed on this equation is reset logic, that self corrects the value of CAP_FC with a capacity calculation at each full charge (EOC) and each end of full discharge.

[56] References Cited

U.S. PATENT DOCUMENTS

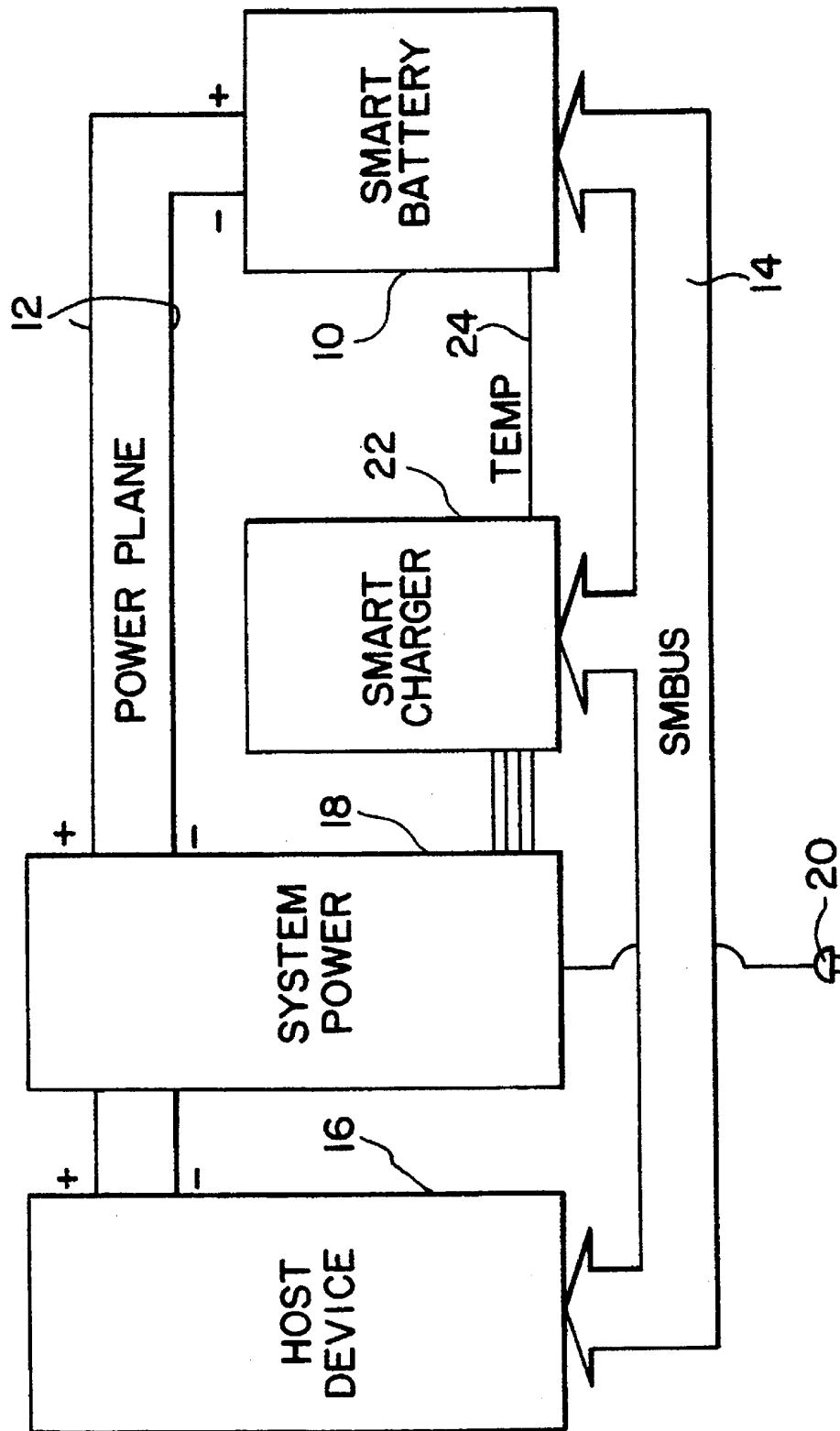
3,971,980 7/1976 Jungfer et al. .
4,238,839 12/1980 Redfern et al. 365/96
4,289,836 9/1981 Lemelson .
4,307,330 12/1981 Belot 320/44
4,333,149 6/1982 Taylor et al. 364/481
4,377,787 3/1983 Kikuoka et al. .
4,387,334 6/1983 Loper 320/44
4,390,841 6/1983 Martin et al. .
4,392,101 7/1983 Saar et al. 320/20
4,455,523 6/1984 Koencck 320/43
4,583,034 4/1986 Martin .
4,595,880 6/1986 Patil .
4,677,363 6/1987 Kopmann .
4,709,202 11/1987 Koencck et al. 320/43
4,716,354 12/1987 Hacker 320/39
4,724,528 2/1988 Eaton 364/715
4,725,784 2/1988 Peled et al. .
4,737,702 4/1988 Koencck 320/40
4,743,831 5/1988 Young .
4,746,854 5/1988 Baker et al. 320/20
4,803,416 2/1989 Abiven et al. 320/44
4,806,840 2/1989 Alexander 320/20
4,885,523 12/1989 Koencck 370/21
4,947,123 8/1990 Minezawa .

31 Claims, 32 Drawing Sheets



U.S. PATENT DOCUMENTS						
5,027,294	6/1991	Fakruddin et al. .	5,254,928	10/1993	Young et al. .	
5,043,651	8/1991	Tamura 320/43	5,278,487	1/1994	Koenck 320/21	
5,047,961	9/1991	Simonsen .	5,284,719	2/1994	Landau et al. .	
5,130,659	7/1992	Sloan 324/435	5,287,286	2/1994	Ninomiya et al. .	
5,136,246	8/1992	Sakamoto 324/435	5,315,228	5/1994	Hess et al. 320/31	
5,151,644	9/1992	Pearson et al. 320/14	5,321,627	6/1994	Reher .	
5,180,961	1/1993	Tsujino 320/20	5,325,041	6/1994	Briggs .	
5,196,779	3/1993	Alexandres et al. .	5,341,084	8/1994	Gotoh et al. .	
5,200,689	4/1993	Interiano et al. .	5,349,282	9/1994	McClure 320/32	
5,206,097	4/1993	Burns 429/90	5,349,535	9/1994	Gupta 364/483	
5,216,371	6/1993	Nagai .	5,381,350	1/1995	Fiorina et al. 364/550	
5,248,929	9/1993	Burke 320/48	5,459,671	10/1995	Duly 364/483	

FIG. 1



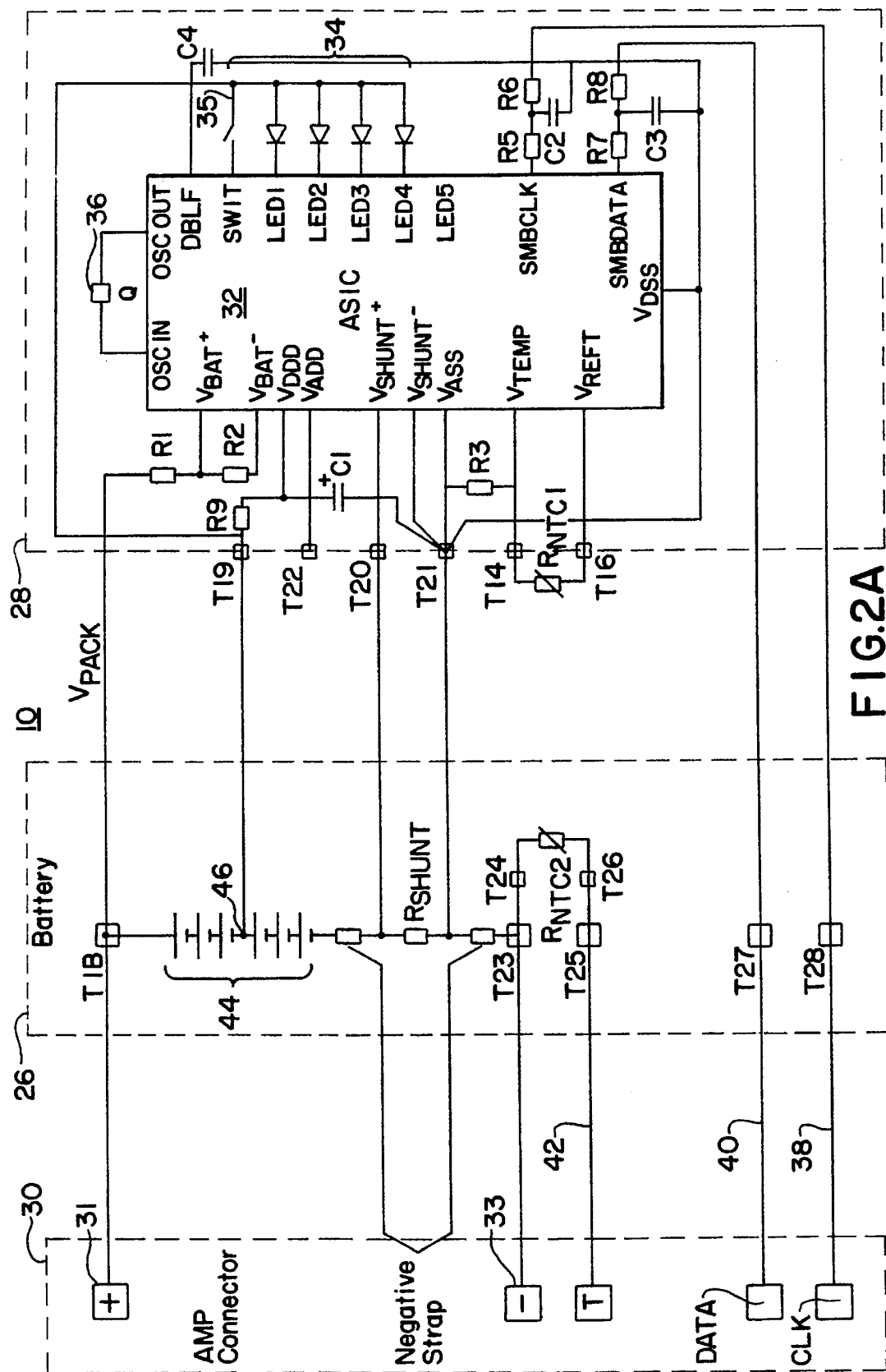
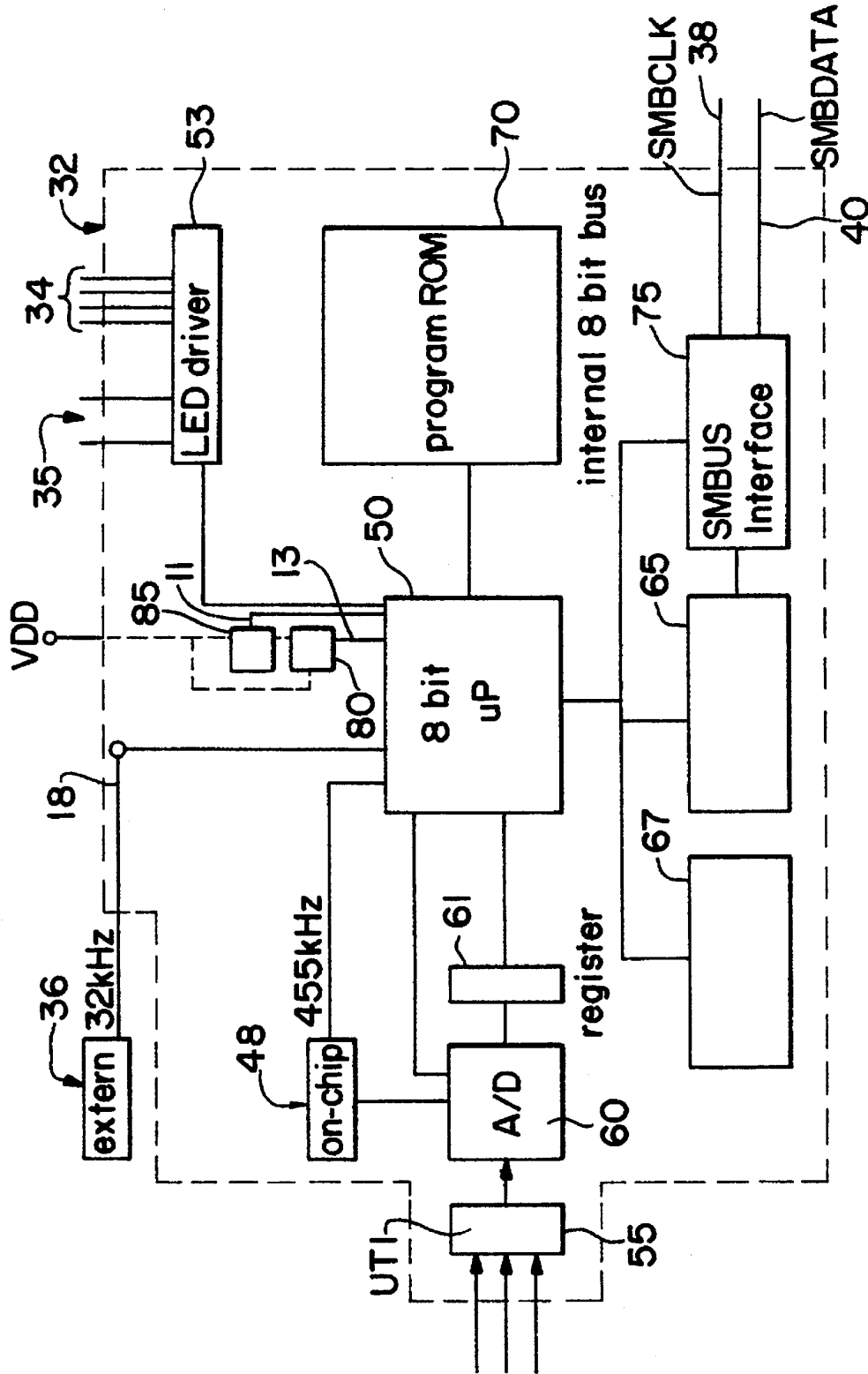


FIG. 2A

FIG. 2B



Explore Litigation Insights

Docket Alarm provides insights to develop a more informed litigation strategy and the peace of mind of knowing you're on top of things.

Real-Time Litigation Alerts



Keep your litigation team up-to-date with **real-time alerts** and advanced team management tools built for the enterprise, all while greatly reducing PACER spend.

Our comprehensive service means we can handle Federal, State, and Administrative courts across the country.

Advanced Docket Research



With over 230 million records, Docket Alarm's cloud-native docket research platform finds what other services can't. Coverage includes Federal, State, plus PTAB, TTAB, ITC and NLRB decisions, all in one place.

Identify arguments that have been successful in the past with full text, pinpoint searching. Link to case law cited within any court document via Fastcase.

Analytics At Your Fingertips



Learn what happened the last time a particular judge, opposing counsel or company faced cases similar to yours.

Advanced out-of-the-box PTAB and TTAB analytics are always at your fingertips.

API

Docket Alarm offers a powerful API (application programming interface) to developers that want to integrate case filings into their apps.

LAW FIRMS

Build custom dashboards for your attorneys and clients with live data direct from the court.

Automate many repetitive legal tasks like conflict checks, document management, and marketing.

FINANCIAL INSTITUTIONS

Litigation and bankruptcy checks for companies and debtors.

E-DISCOVERY AND LEGAL VENDORS

Sync your system to PACER to automate legal marketing.