

[54] TOUCH CONTROL LAMP SOCKET INTERIOR

[76] Inventor: Charles A. Roudeski, 97 Willow Wood Cir., Urbana, Ohio 43078

[21] Appl. No.: 938,827

[22] Filed: Dec. 8, 1986

[51] Int. Cl.<sup>4</sup> ..... H01J 7/44; H01J 19/28; H01J 29/96; H01J 17/34

[52] U.S. Cl. .... 315/51; 315/53; 315/72; 315/149; 315/362; 315/DIG.4; 307/116; 307/125; 307/157; 307/308; 200/DIG.1

[58] Field of Search ..... 307/116, 125, 157, 308, 307/247 R; 200/DIG. 1; 315/362, 74, 72, DIG. 4, 227 R, 51, 53, 149, 194

[56] References Cited

U.S. PATENT DOCUMENTS

2,206,217	7/1940	Barry	.....	315/362
2,953,769	9/1960	Woofter et al.	.....	315/DIG. 4 X
3,165,371	1/1965	Ruocco	.....	313/318
3,300,711	1/1967	Duncan	.....	339/78
3,543,088	11/1970	Garrett	.....	315/272
3,896,334	7/1975	Rodriquez	.....	315/194
4,101,805	7/1978	Stone	.....	315/74
4,183,604	1/1980	Tjornhom, Sr.	.....	315/72
4,211,959	7/1980	Deavenport et al.	.....	315/362
4,237,386	12/1980	Instance	.....	307/116
4,250,432	2/1981	Koehler	.....	315/291
4,490,625	12/1984	Dilly	.....	307/116
4,613,790	9/1986	Roorda	.....	315/72
4,668,887	5/1987	Kunen	.....	307/116

Primary Examiner—David K. Moore  
Assistant Examiner—Mark R. Powell  
Attorney, Agent, or Firm—Killworth, Gottman, Hagan & Schaeff

[57] ABSTRACT

An electric touch control light socket used to convert a lamp to touch-sensitive use which includes a circuit housing and a light bulb insertion socket mounted thereto which together are adapted for installation within a standard light socket shell of a lamp in place of a standard light socket. A touch sensing circuit in the circuit housing has a self-compensating subcircuit to eliminate the effects of slower changing ambient capacitance of the lamp in order to detect touching of the lamp by monitoring rapid changes in lamp capacitance. A spring contact connected to the circuit is attached to the circuit housing and projects along a side thereof for placement between the circuit housing exterior and the interior surface of the light socket shell and in electrical contact with a conductive portion of the light socket shell when the circuit housing and insertion socket are installed within the light socket shell. The spring contact thereby is inaccessible from the exterior of the lamp and is adapted to convey to the circuit an electrical touch-responsive input signal generated when a person touches a conductive exterior portion of the lamp connected to the conductive portion of the light socket shell. The circuit has an operating mode control subcircuit actuatable by a manually-operable control knob for selecting the operating mode of the circuit, e.g. ON/OFF, 4-Level, or 5-Level dimmer sequences.

18 Claims, 4 Drawing Sheets

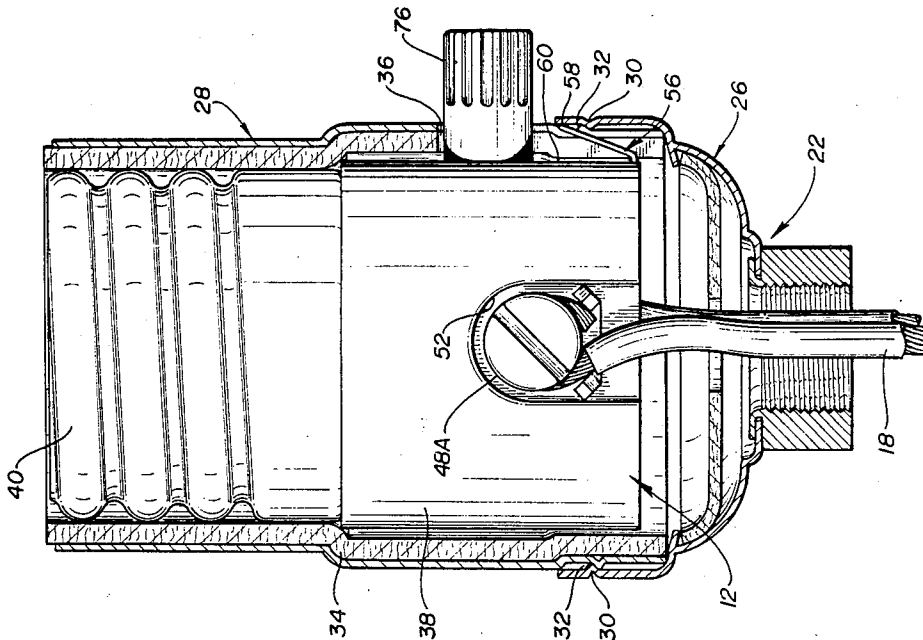


FIG-1

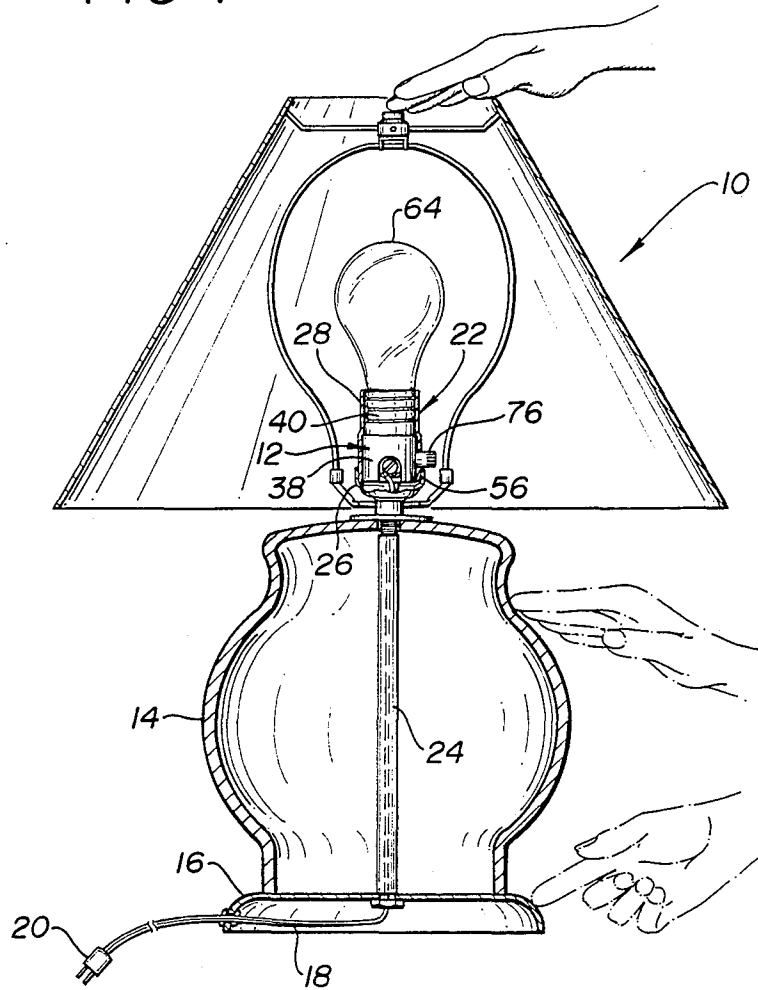


FIG-2

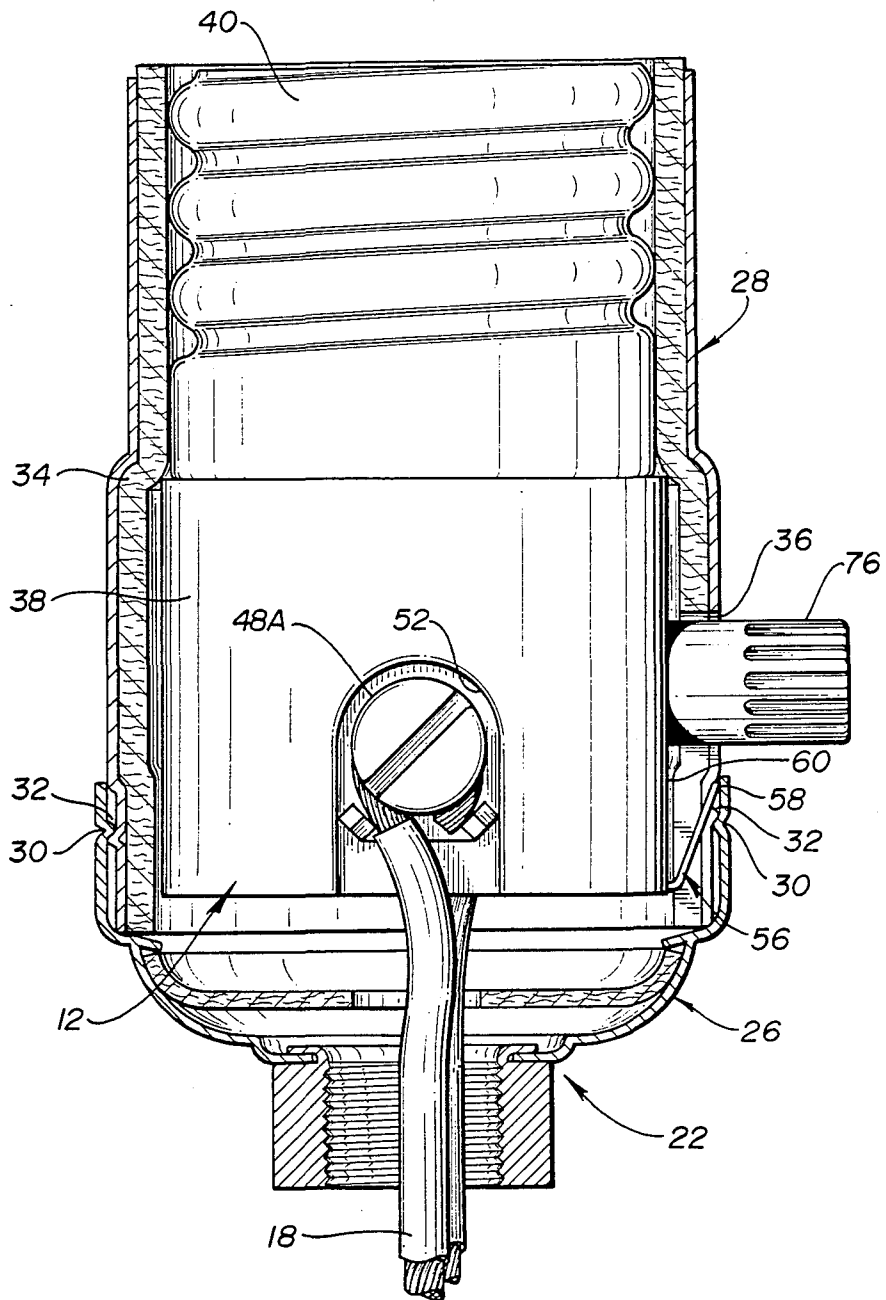


FIG-3

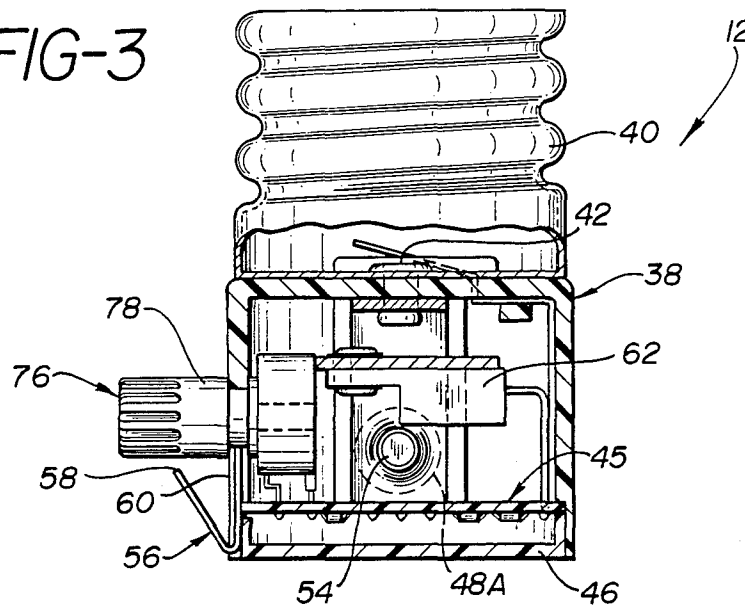


FIG-4

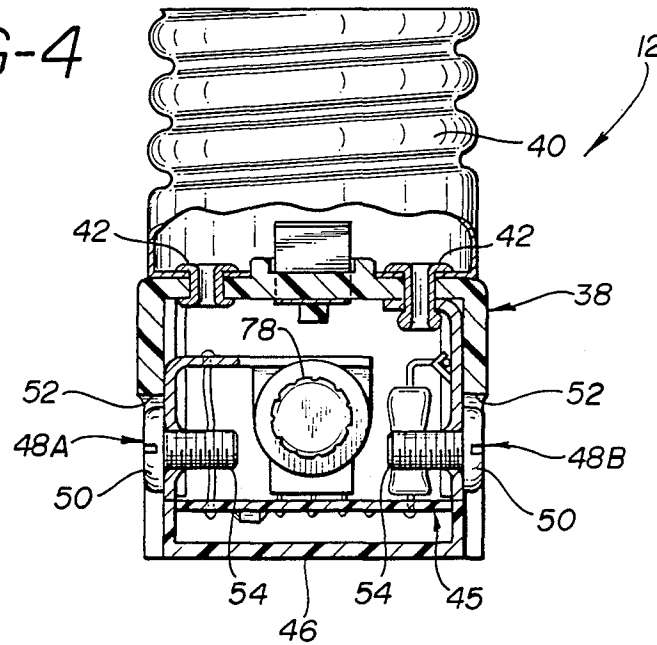
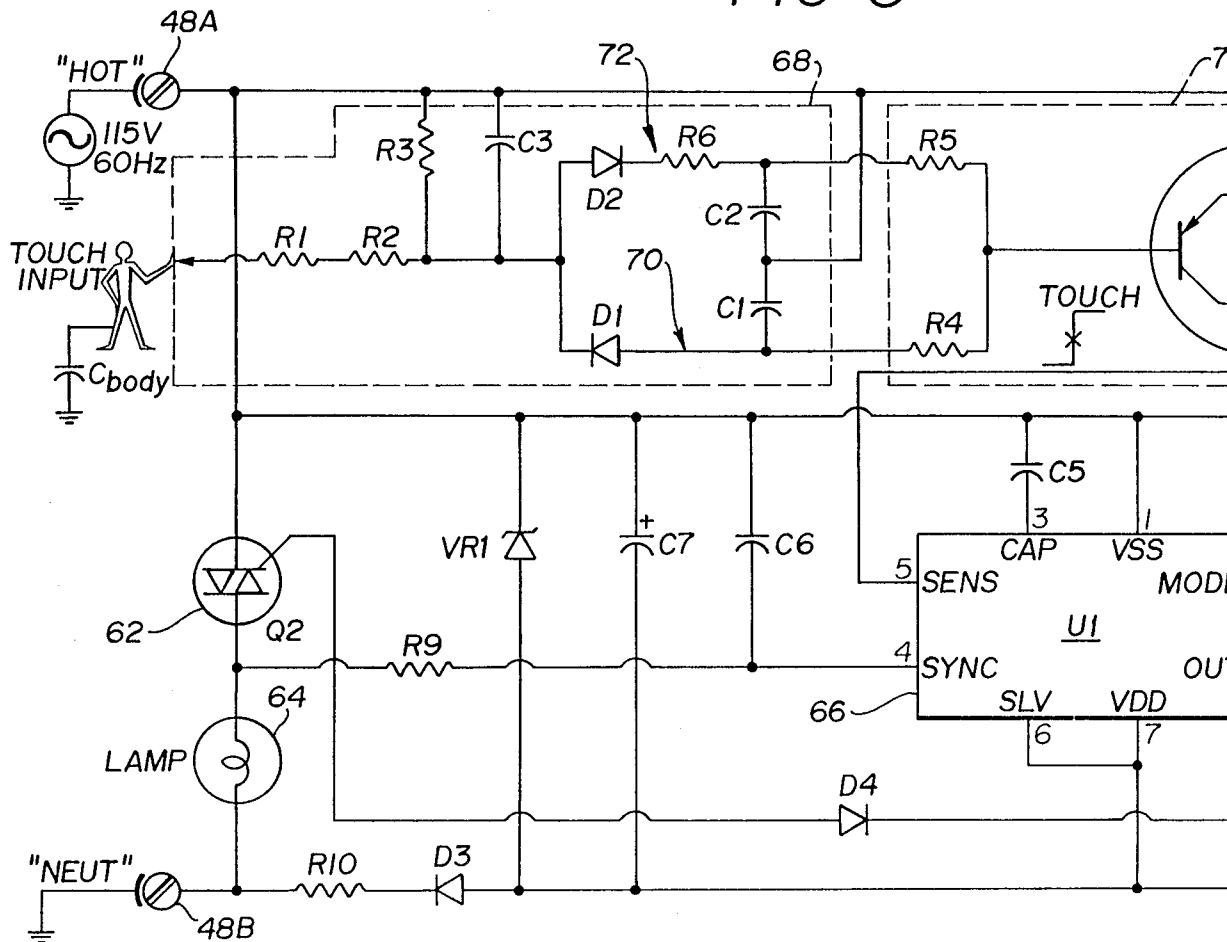


FIG-5



# Explore Litigation Insights

Docket Alarm provides insights to develop a more informed litigation strategy and the peace of mind of knowing you're on top of things.

## Real-Time Litigation Alerts



Keep your litigation team up-to-date with **real-time alerts** and advanced team management tools built for the enterprise, all while greatly reducing PACER spend.

Our comprehensive service means we can handle Federal, State, and Administrative courts across the country.

## Advanced Docket Research



With over 230 million records, Docket Alarm's cloud-native docket research platform finds what other services can't. Coverage includes Federal, State, plus PTAB, TTAB, ITC and NLRB decisions, all in one place.

Identify arguments that have been successful in the past with full text, pinpoint searching. Link to case law cited within any court document via Fastcase.

## Analytics At Your Fingertips



Learn what happened the last time a particular judge, opposing counsel or company faced cases similar to yours.

Advanced out-of-the-box PTAB and TTAB analytics are always at your fingertips.

## API

Docket Alarm offers a powerful API (application programming interface) to developers that want to integrate case filings into their apps.

## LAW FIRMS

Build custom dashboards for your attorneys and clients with live data direct from the court.

Automate many repetitive legal tasks like conflict checks, document management, and marketing.

## FINANCIAL INSTITUTIONS

Litigation and bankruptcy checks for companies and debtors.

## E-DISCOVERY AND LEGAL VENDORS

Sync your system to PACER to automate legal marketing.