



SSCITM

A Division of Albany Molecular Research Inc.

3065 Kent Avenue
West Lafayette, IN 47906-1076
Phone: (765) 463-0112
Fax: (765) 463-4722
E-mail: info@ssci-inc.com
Web: www.ssci-inc.com

Chromatographic Data for the Placebo of the Bromfenac Sodium Drug Product

Project ID: EL20151326

Report Date: 2/8/2016

I. SUMMARY

This document contains chromatographic data obtained from the injection of a prepared placebo sample of the Bromfenac sodium ophthalmic solution drug product. The sample was prepared at SSCI from commercially sourced materials.

Table 1. Summary of HPLC Data, Placebo Sample

Sample Description	Sample ID	LIMS	LC Filename	RT	Area(mAU*s)	Page
Placebo	6294-04-01	407751	740025	---	---	4

II. CHROMATOGRAMS

Extended Performance Report

Instrument: Instrument 1

Module	Firmware revision	Serial number
1100 Quaternary Pump	A.05.11 [013]	US70201400
1100 Autosampler	A.05.11 [013]	US70201352
1100 Diode Array Detector	A.05.11 [013]	US64400691
1100 Column Thermostat	A.05.11 [013]	DE63064158

Software Revision: Rev. A.10.02 [1757] Copyright © Agilent Technologies

Column Description : C18 Symmetry
Product# : WAT045905 Batch#: 027132284
Serial# : 0271322842381
Diameter : 4.6 mm Length : 150.0 mm
Particle size : 5.0 µm Void volume : 68.0 %
Maximum Pressure : 400 bar Maximum pH : 0
Maximum Temperature: 0 °C
Comment :

Analysis method: C:\HPCHEM\1\METHODS\62940202.M

Sample information for Location: Vial 1

Sample Name:	407751	Multiplier:	1.00
Injection#:	1	Dilution:	1.00
Injection volume:	5 µl		

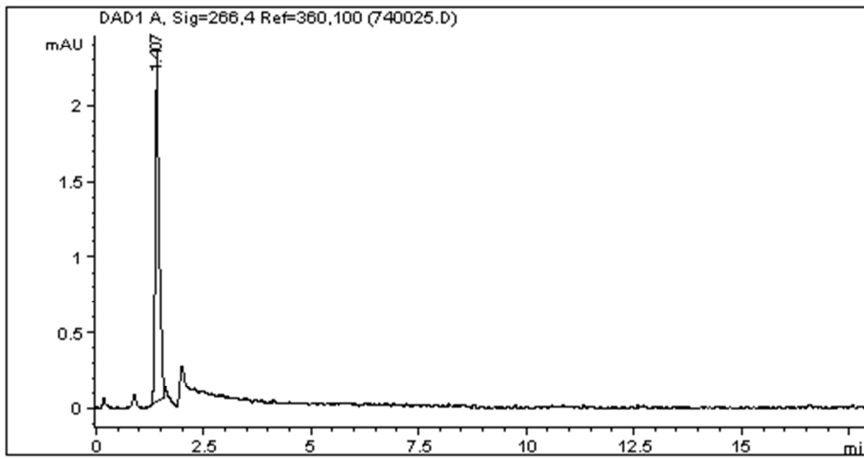
Acquisition information:

Operator: GT
Date/Time: 11/3/2015 6:19:37 PM
Data file name: D:\LIMSDATA\740025.D
Method file name: C:\HPCHEM\1\METHODS\62940202.M

Flow: 1.000 ml/min
Pressure at start: 78 bar Pressure at end: 79 bar
Left Temp. at start: 25.0 °C Left Temp. at end: 25.3 °C
Right Temp. at start: 25.0 °C Right Temp. at end: 25.0 °C

Solvents: PMP1, Solvent A 6294-02-01 (exp 11/13/15)
PMP1, Solvent B
PMP1, Solvent C
PMP1, Solvent D

Signal description: DAD1 A, Sig=266,4 Ref=360,100



Explore Litigation Insights

Docket Alarm provides insights to develop a more informed litigation strategy and the peace of mind of knowing you're on top of things.

Real-Time Litigation Alerts



Keep your litigation team up-to-date with **real-time alerts** and advanced team management tools built for the enterprise, all while greatly reducing PACER spend.

Our comprehensive service means we can handle Federal, State, and Administrative courts across the country.

Advanced Docket Research



With over 230 million records, Docket Alarm's cloud-native docket research platform finds what other services can't. Coverage includes Federal, State, plus PTAB, TTAB, ITC and NLRB decisions, all in one place.

Identify arguments that have been successful in the past with full text, pinpoint searching. Link to case law cited within any court document via Fastcase.

Analytics At Your Fingertips



Learn what happened the last time a particular judge, opposing counsel or company faced cases similar to yours.

Advanced out-of-the-box PTAB and TTAB analytics are always at your fingertips.

API

Docket Alarm offers a powerful API (application programming interface) to developers that want to integrate case filings into their apps.

LAW FIRMS

Build custom dashboards for your attorneys and clients with live data direct from the court.

Automate many repetitive legal tasks like conflict checks, document management, and marketing.

FINANCIAL INSTITUTIONS

Litigation and bankruptcy checks for companies and debtors.

E-DISCOVERY AND LEGAL VENDORS

Sync your system to PACER to automate legal marketing.