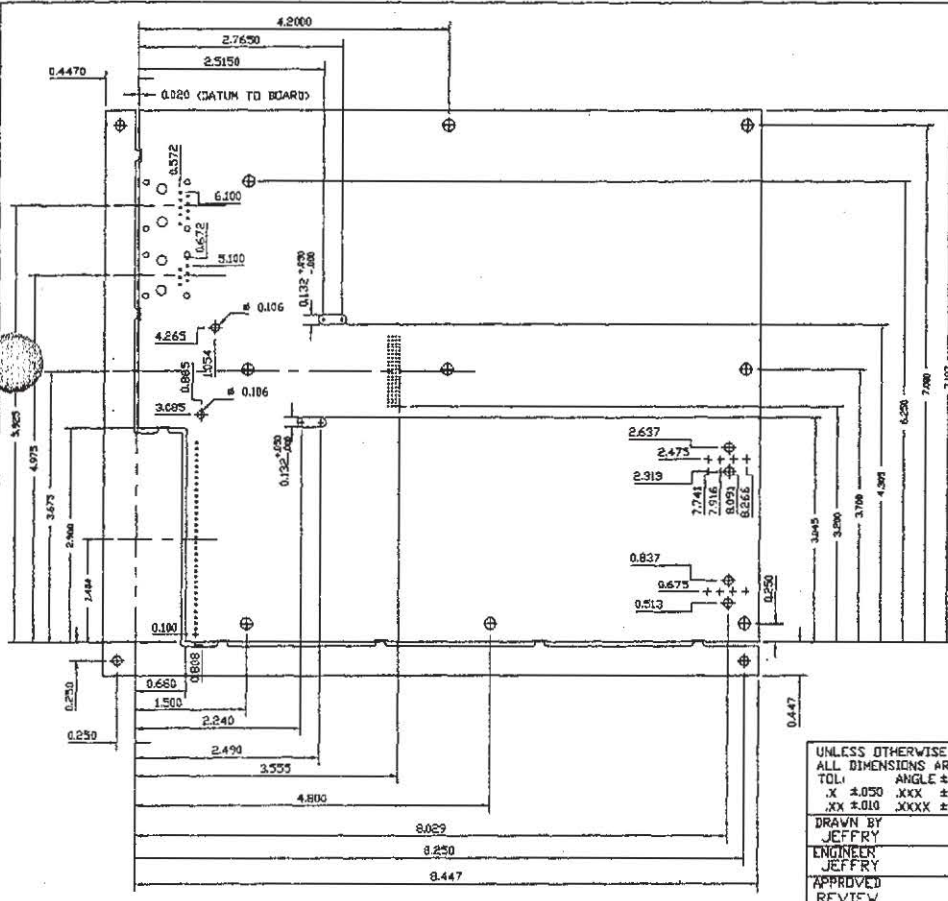


| REVISION HISTORY | | | |
|------------------|-----------------------|---------|-------------|
| REV | DESCRIPTION | DATE | APPROVED |
| A | REVIEWED AND RELEASED | 6/10/97 | JEFFRY/UMBY |
| B | Update from AC94412,3 | 9/3/97 | JEFFRY/UMBY |



- Notes
1. Assume light pipes placed for 0.014" clearance from enclosure wall.
 2. GLM placement follows optical GLM specification to align connector flush with outside edge of enclosure wall.
 3. Assume 0.25" clearance to front of enclosure for enclosure assembly tolerance.
 4. Assume rear board edge clearance of 0.035" to enclosure wall (0.015" from datum).
 5. Drill size and tooling holes based on Xetel recommended practice.
 6. Drainage dimensions define footprint locations.

UNLESS OTHERWISE SPECIFIED
 ALL DIMENSIONS ARE IN INCHES
 TOL: ANGLE $\pm 1^\circ$
 .X ± 0.050 .XXX ± 0.002
 .XX ± 0.010 .XXXX ± 0.001

DRAWN BY: JEFFRY
 DATE: 5/28/97
 ENGINEER: JEFFRY
 APPROVED: [Signature]
 REVIEW: 6/10/97

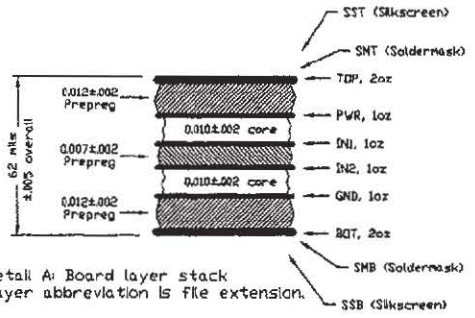
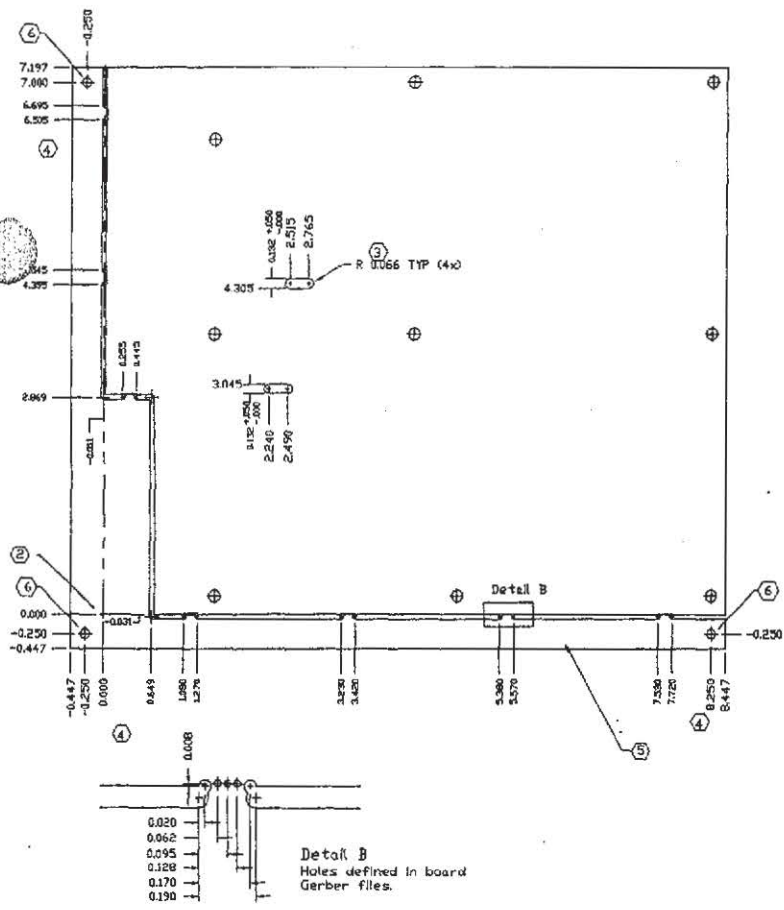
ALL SHEETS ARE THE SAME REVISION STATUS

Crossroads Systems, Inc.
 Austin, TX

TITLE: Verrazano placement
 Bare board p/n AC94414
 Reference for layout

SIZE: FILE (DS01025*.prnted) DWG NO: DS01025 REV: B
 VER_BARE.DWG
 SCALE: none SHEET 1 of 1

| REVISION HISTORY | | | |
|------------------|--|---------|-------------|
| REV | DESCRIPTION | DATE | APPROVED |
| A | REVIEW AND RELEASE | 6/19/97 | JEFFRY |
| B | Further specify non details, no significant changes. | 8/18/97 | JEFFRY |
| C | Added HASL, Finish spec | 8/29/97 | JEFFRY |
| D | Update from AC94413 | 9/3/97 | JEFFRY/UMBY |



Detail A: Board layer stack
 Layer abbreviation is file extension.

- Notes
1. Material: FR-4 epoxy fiberglass, UL 94V-0
 Soldermask: LPI, green, over bare copper (SMOBC)
 Silkscreen: White
 Lines: .006 min with 008 spacing. Tolerance ± 0.002
 Finish: Hot Air Levelled Solder
 See Detail A for board layer stacking.
 2. Origin of dimensions is relative to board Gerber data.
 3. Slot dimensions: inside (Facing) edge critical dimension.
 4. Route dimensions between card and real are indicated for 0.062" route, tol. ± 0.005 . Holes for perforations in card/real tabs are defined in board Gerber.
 5. Copper clad rolls
 6. Tooling holes: $0.125^{+0.003}_{-0.005}$
 7. TEST: All cards are clam-shell tested from netlist.

UNLESS OTHERWISE SPECIFIED
 ALL DIMENSIONS ARE IN INCHES
 TOL: ANGLE $\pm 1^\circ$
 .X ± 0.050 .XXX ± 0.002
 .XX ± 0.010 .XXXX ± 0.001

DRAWN BY: JEFFRY
 DATE: 5/28/97
 ENGINEER: JEFFRY
 APPROVED: [Signature]
 REVIEW: 6/19/97

ALL SHEETS ARE THE SAME REVISION STATUS

Crossroads Systems, Inc.
 Austin, TX

TITLE: Verrazano bare board, AC94414
 Panelization dimensions, stack-up
 (Also for AC94411, .12, .13)

SIZE: FILE (ver_pan*.prnted) DWG NO: DS01026 REV: D
 VER_BARE.DWG
 SCALE: none SHEET 1 of 1