

(54) **CRYSTAL FORMS OF LAMOTRIGINE AND PROCESSES FOR THEIR PREPARATIONS**

(75) Inventors: **Nissim Garti**, Ramot (IL); **Yana Berkovich**, Jerusalem (IL); **Ben-Zion Dolitzky**, Petach Tiqva (IL); **Judith Aronhime**, Rehovot (IL); **Claude Singer**, Kfar Saba (IL); **Anita Liebermann**, Tel-Aviv (IL); **Neomi Gershon**, Rosh Ha-Ain (IL)

(73) Assignee: **Teva Pharmaceutical Industries Ltd.**, Petah Tiqva (IL)

(*) Notice: Subject to any disclaimer, the term of this patent is extended or adjusted under 35 U.S.C. 154(b) by 0 days.

(21) Appl. No.: **10/086,157**

(22) Filed: **Feb. 27, 2002**

(65) **Prior Publication Data**

US 2003/0018030 A1 Jan. 23, 2003

Related U.S. Application Data

(60) Provisional application No. 60/271,688, filed on Feb. 27, 2001.

(51) **Int. Cl.**⁷ **A61K 31/35**; C07D 253/075

(52) **U.S. Cl.** **514/242**; 544/182

(58) **Field of Search** 544/182; 514/242

(56) **References Cited**

U.S. PATENT DOCUMENTS

4,560,687 A 12/1985 Baxter et al. 544/182
6,124,308 A 9/2000 Nobbs et al. 544/182

OTHER PUBLICATIONS

Janes et al., "Structure of Lamotrigine Methanol Solvate: 3,5-Diamino-6-(2,3-dichlorophenyl)-1,2,4-triazine-Methanol, a Novel Anticonvulsant Drug," *Acta Cryst.*, 1989, C45, 129-132.

Pharmacopeial Forum, vol. 24, No. 1, (Jan.-Feb. 1998) p. 5438-5440.

E. Schmitt et al "Moisture-Dependent Crystallization of Amorphous Lamotrigine Mesylate" *Journal of Pharmaceutical Sciences* vol. 85, No. 11, Nov. 1996, pp. 1215-1219.

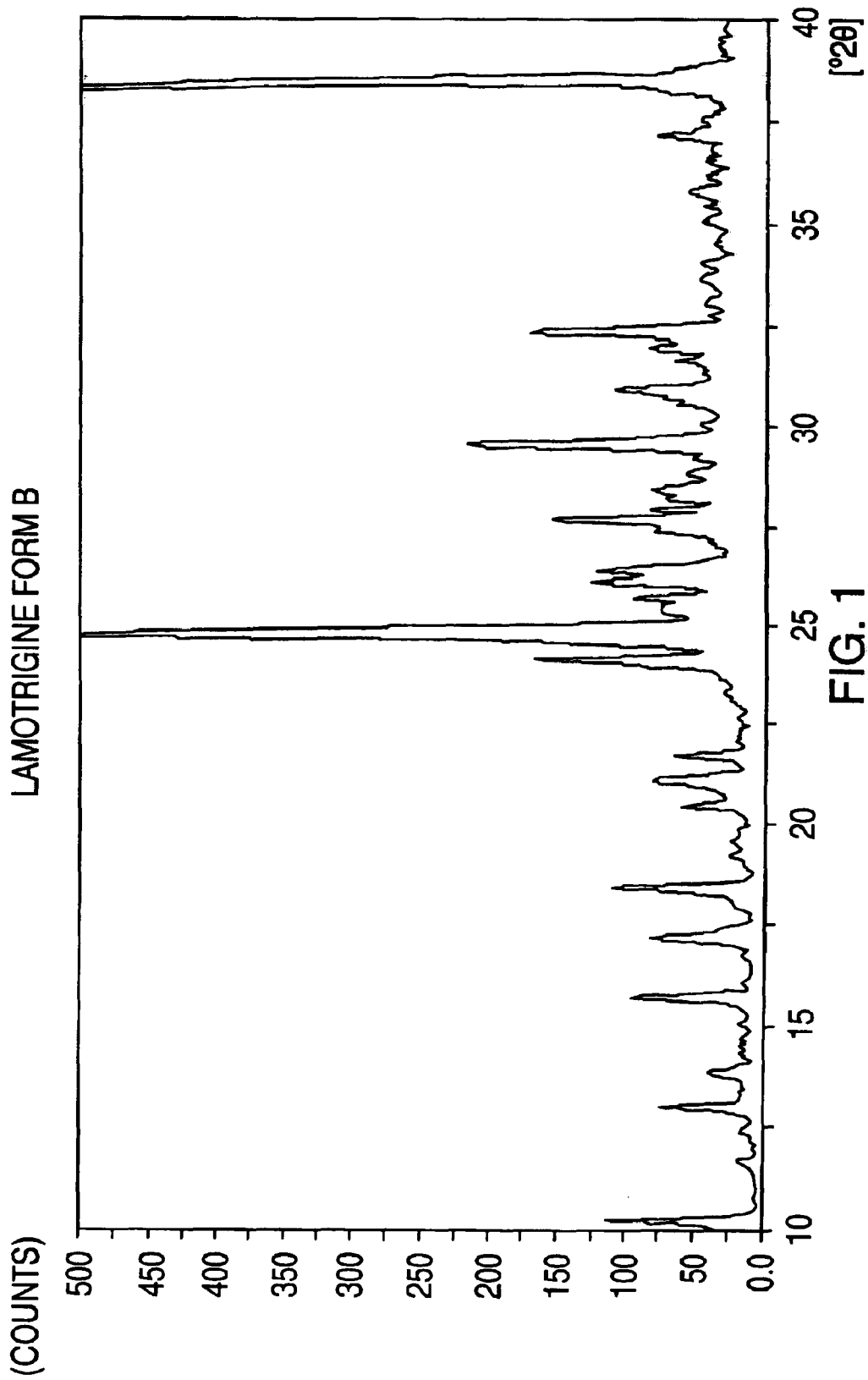
Primary Examiner—Richard L. Raymond

(74) *Attorney, Agent, or Firm*—Kenyon & Kenyon

(57) **ABSTRACT**

The present invention relates to lamotrigine, a useful agent for anti-epilepsia. New crystal forms of lamotrigine containing molecules of the solvent in stoichiometric ratios are disclosed. The present invention also provides processes for preparing the new crystal forms of lamotrigine.

100 Claims, 18 Drawing Sheets



LAMOTRIGINE FORM C STEP: 0.050° CNT TIME: 1.000 SEC.
RANGE: 2.00 - 40.00 (DEG) CONT. SCAN RATE: 3.00 DEGMIN.

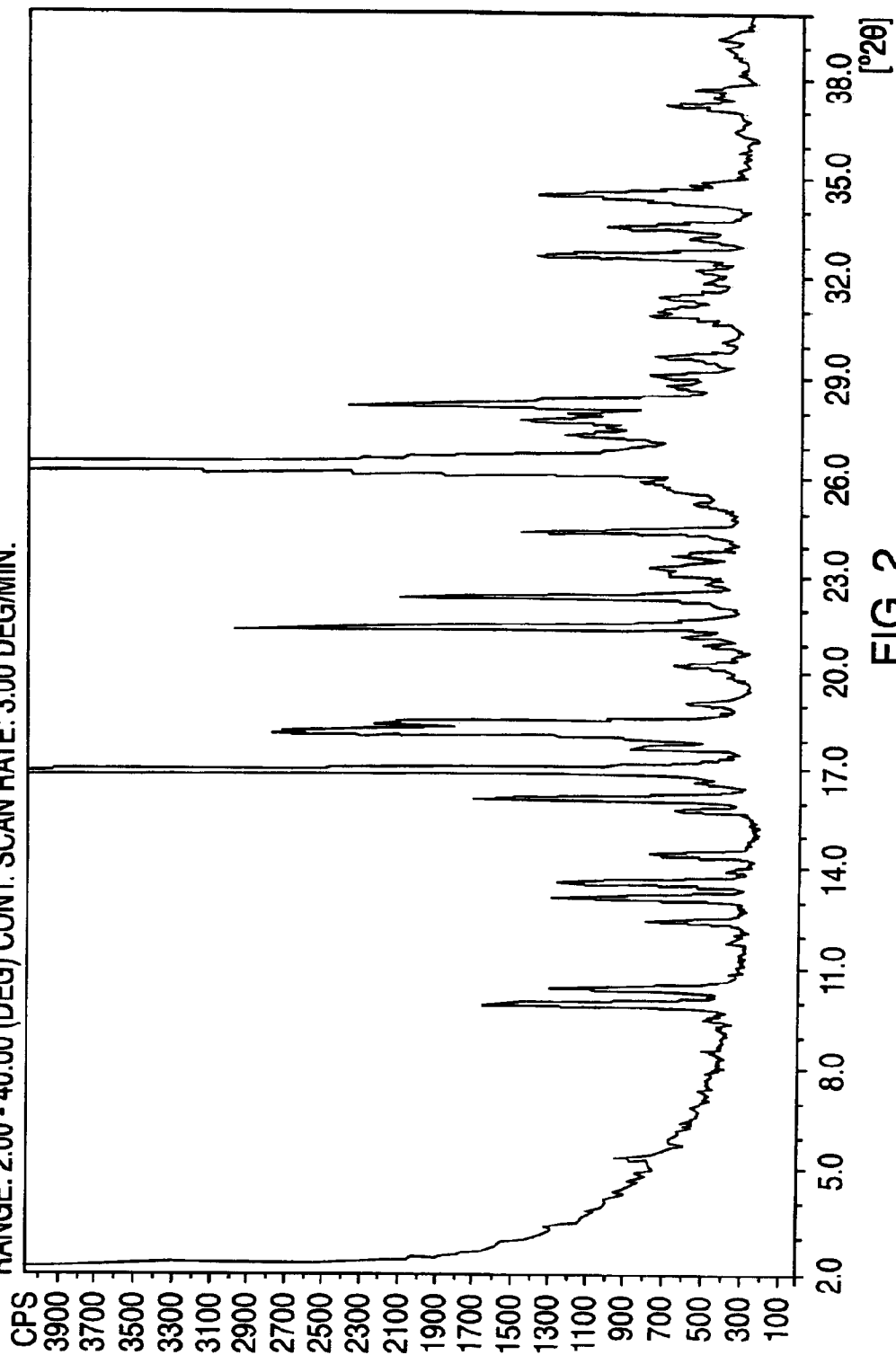


FIG. 2

LAMOTRIGINE FORM D

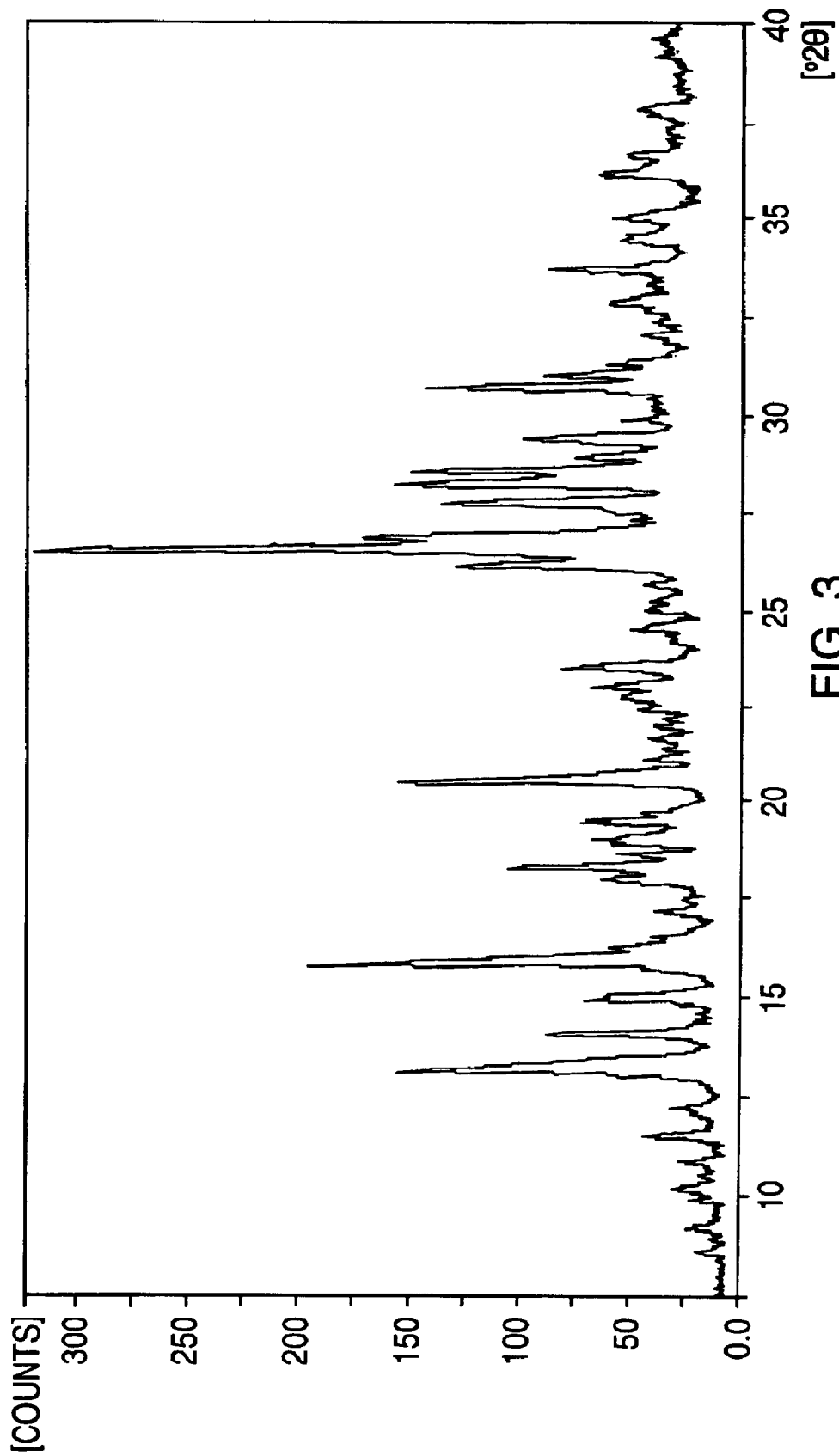


FIG. 3

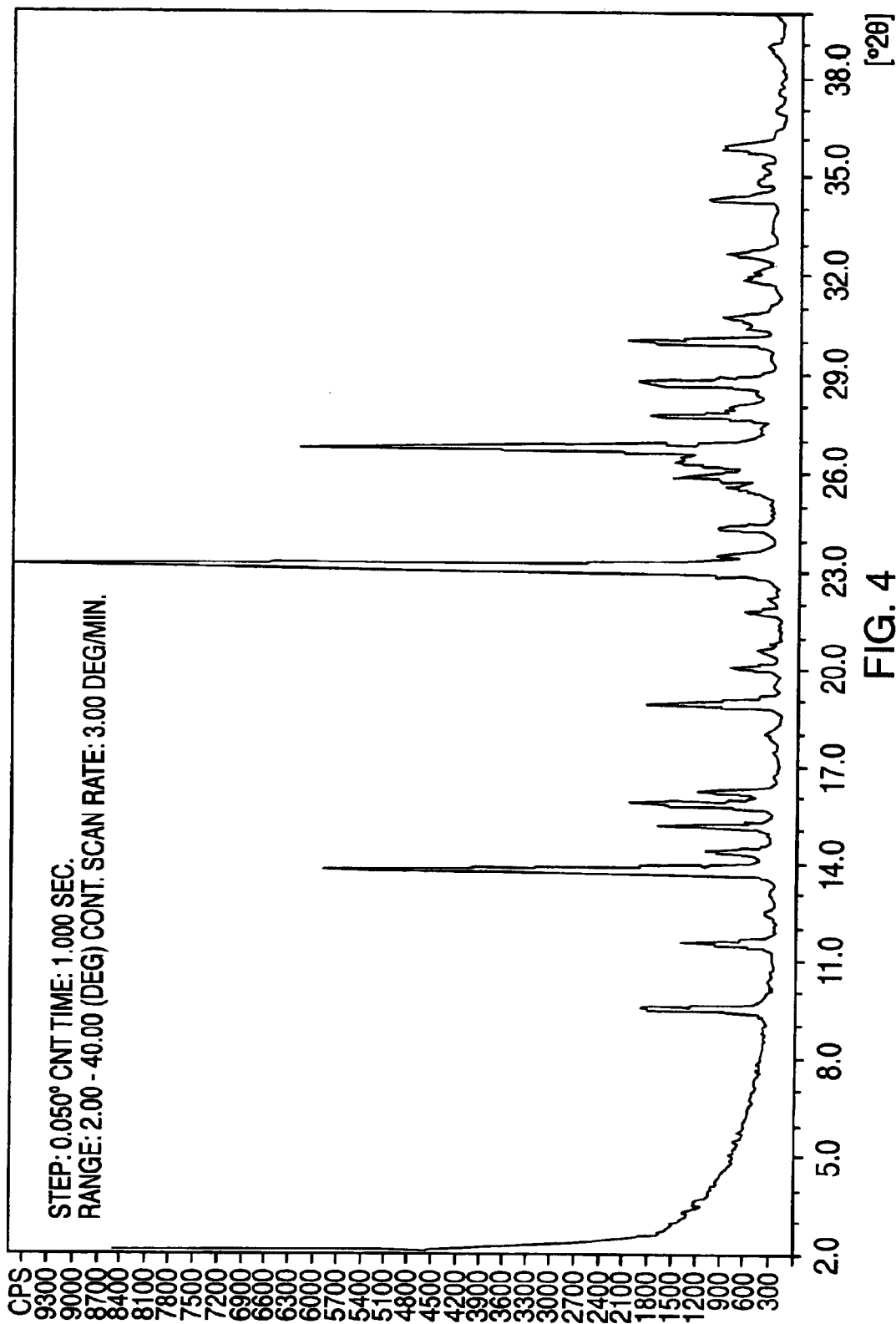


FIG. 4

Explore Litigation Insights

Docket Alarm provides insights to develop a more informed litigation strategy and the peace of mind of knowing you're on top of things.

Real-Time Litigation Alerts



Keep your litigation team up-to-date with **real-time alerts** and advanced team management tools built for the enterprise, all while greatly reducing PACER spend.

Our comprehensive service means we can handle Federal, State, and Administrative courts across the country.

Advanced Docket Research



With over 230 million records, Docket Alarm's cloud-native docket research platform finds what other services can't. Coverage includes Federal, State, plus PTAB, TTAB, ITC and NLRB decisions, all in one place.

Identify arguments that have been successful in the past with full text, pinpoint searching. Link to case law cited within any court document via Fastcase.

Analytics At Your Fingertips



Learn what happened the last time a particular judge, opposing counsel or company faced cases similar to yours.

Advanced out-of-the-box PTAB and TTAB analytics are always at your fingertips.

API

Docket Alarm offers a powerful API (application programming interface) to developers that want to integrate case filings into their apps.

LAW FIRMS

Build custom dashboards for your attorneys and clients with live data direct from the court.

Automate many repetitive legal tasks like conflict checks, document management, and marketing.

FINANCIAL INSTITUTIONS

Litigation and bankruptcy checks for companies and debtors.

E-DISCOVERY AND LEGAL VENDORS

Sync your system to PACER to automate legal marketing.