



US 20030048249A1

(19) **United States**

(12) **Patent Application Publication**
Sekido et al.

(10) **Pub. No.: US 2003/0048249 A1**

(43) **Pub. Date: Mar. 13, 2003**

(54) **DRIVE CIRCUIT DEVICE FOR DISPLAY DEVICE, AND DISPLAY DEVICE USING THE SAME**

Publication Classification

(51) **Int. Cl.⁷** G09G 3/36

(52) **U.S. Cl.** 345/98

(75) **Inventors: Satoshi Sekido, Kawasaki (JP); Yasutake Furukoshi, Kawasaki (JP); Syouichi Fukutoku, Kawasaki (JP)**

(57) **ABSTRACT**

Correspondence Address:
Patrick G. Burns, Esq.
GREER, BURNS & CRAIN, LTD.
Suite 2500
300 South Wacker Dr.
Chicago, IL 60606 (US)

A drive circuit device for a display device which drives a plurality of source bus lines provided on a display panel, the drive circuit device comprises: a driver unit(20) that receives a clock signal, a data signal and a control signal, and sequentially fetches the data signal, and generates drive signals for the source bus lines in accordance to the fetched data signal; and a gate unit(22) that, after elapse of specified time from the reception of the driver unit, and at a timing when a rear-stage drive circuit device starts receiving, starts outputting of a propagation signal including at least one of the clock signal, data signal and control signal to the rear-stage drive circuit device. Consequently, the power consumption required for supplying these signals and the generated amount of electromagnetic waves resulting from the signal supply can be suppressed.

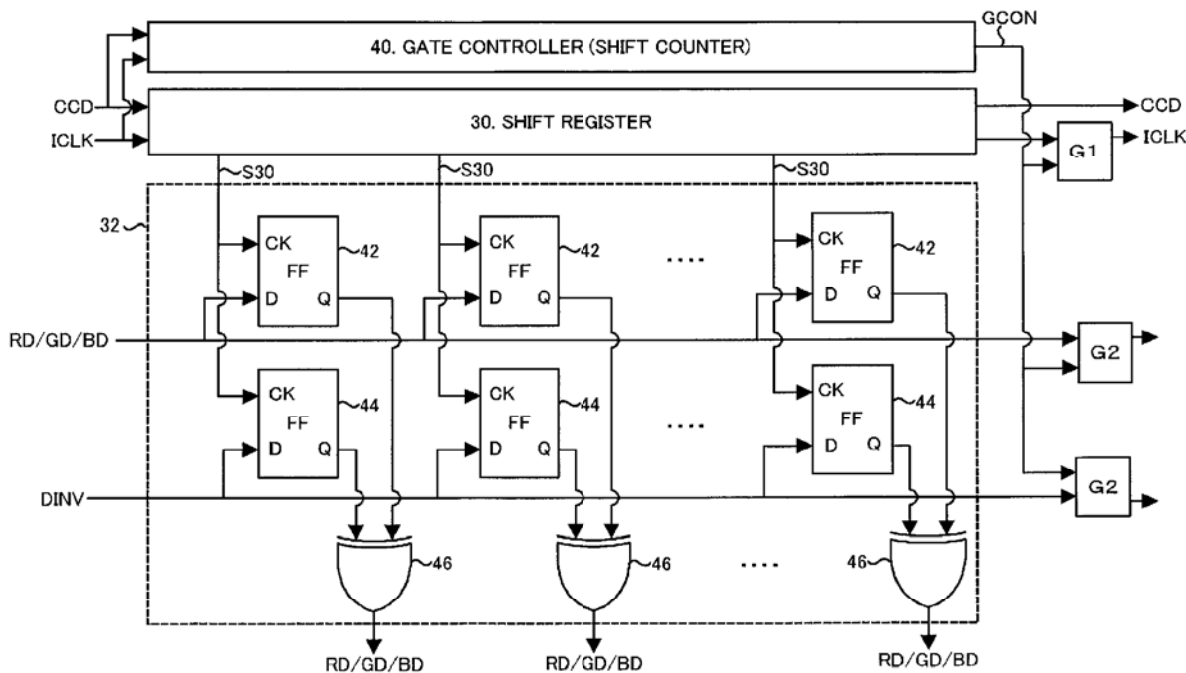
(73) **Assignee: FUJITSU LIMITED**

(21) **Appl. No.: 10/102,264**

(22) **Filed: Mar. 20, 2002**

(30) **Foreign Application Priority Data**

Sep. 12, 2001 (JP)..... 2001-276090



SHARP EXHIBIT 1009

FIG. 1

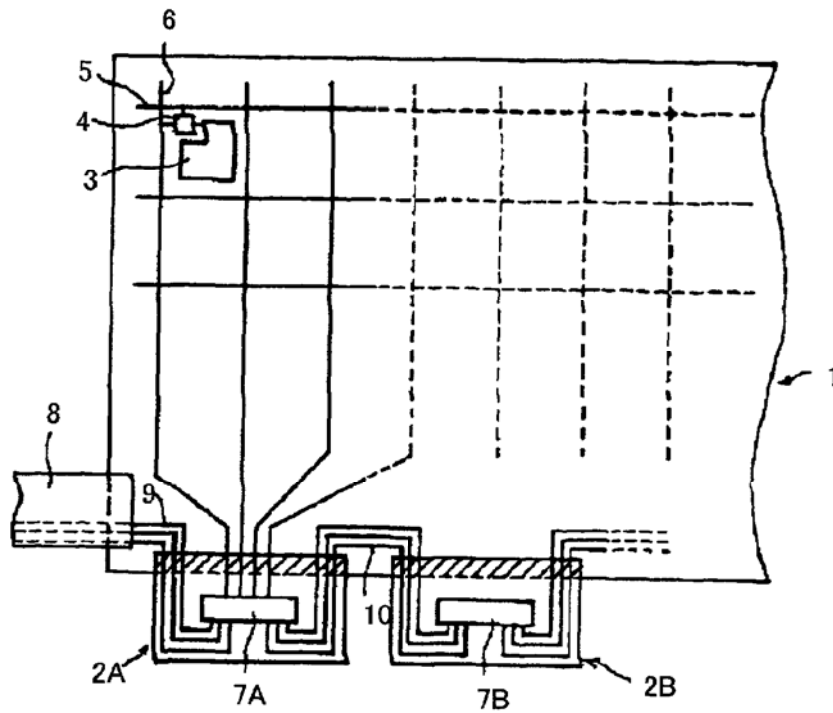
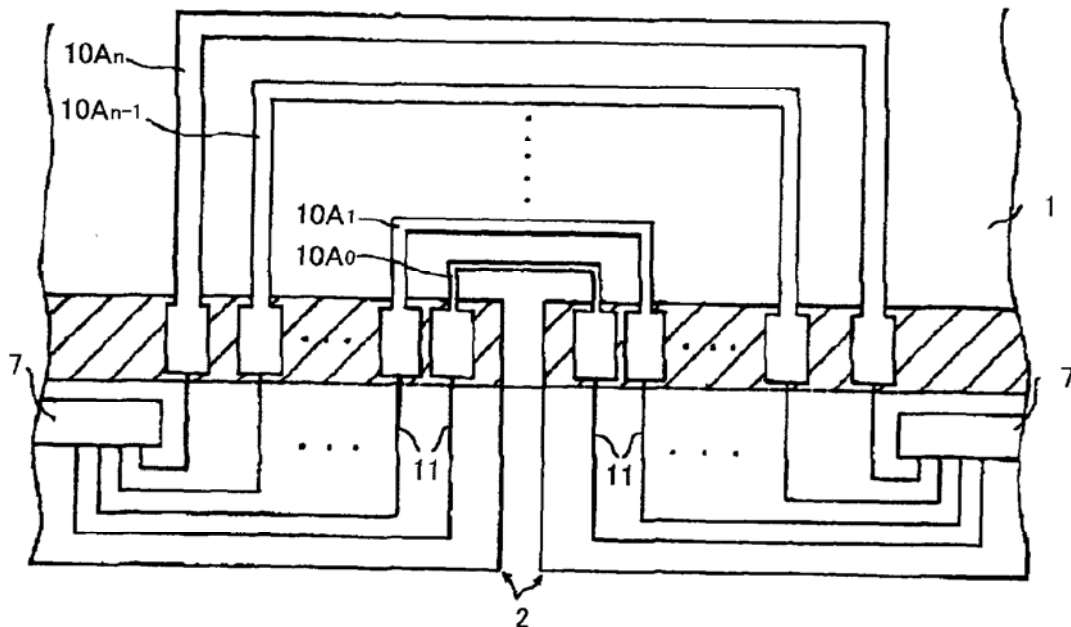


FIG. 2



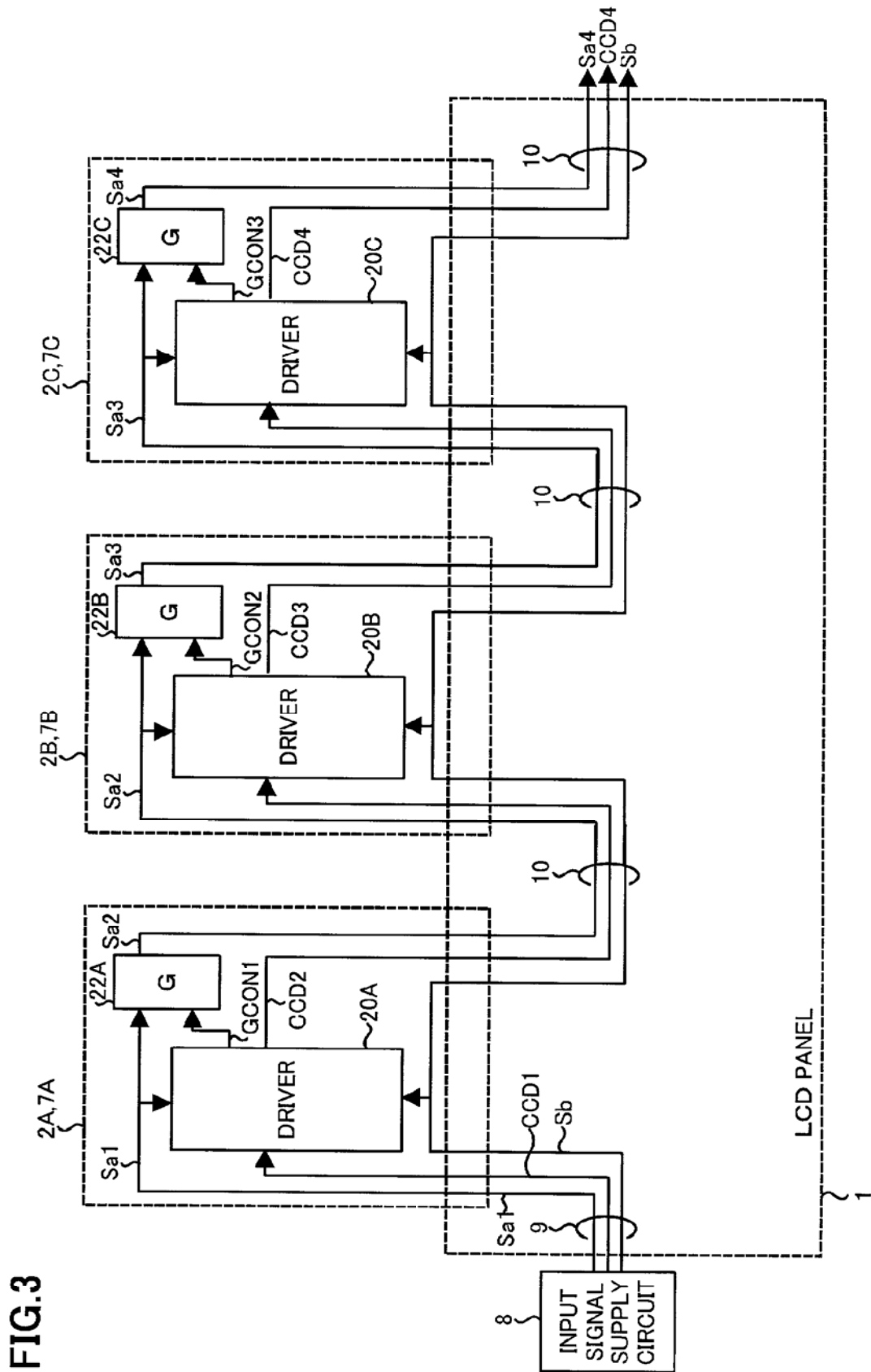
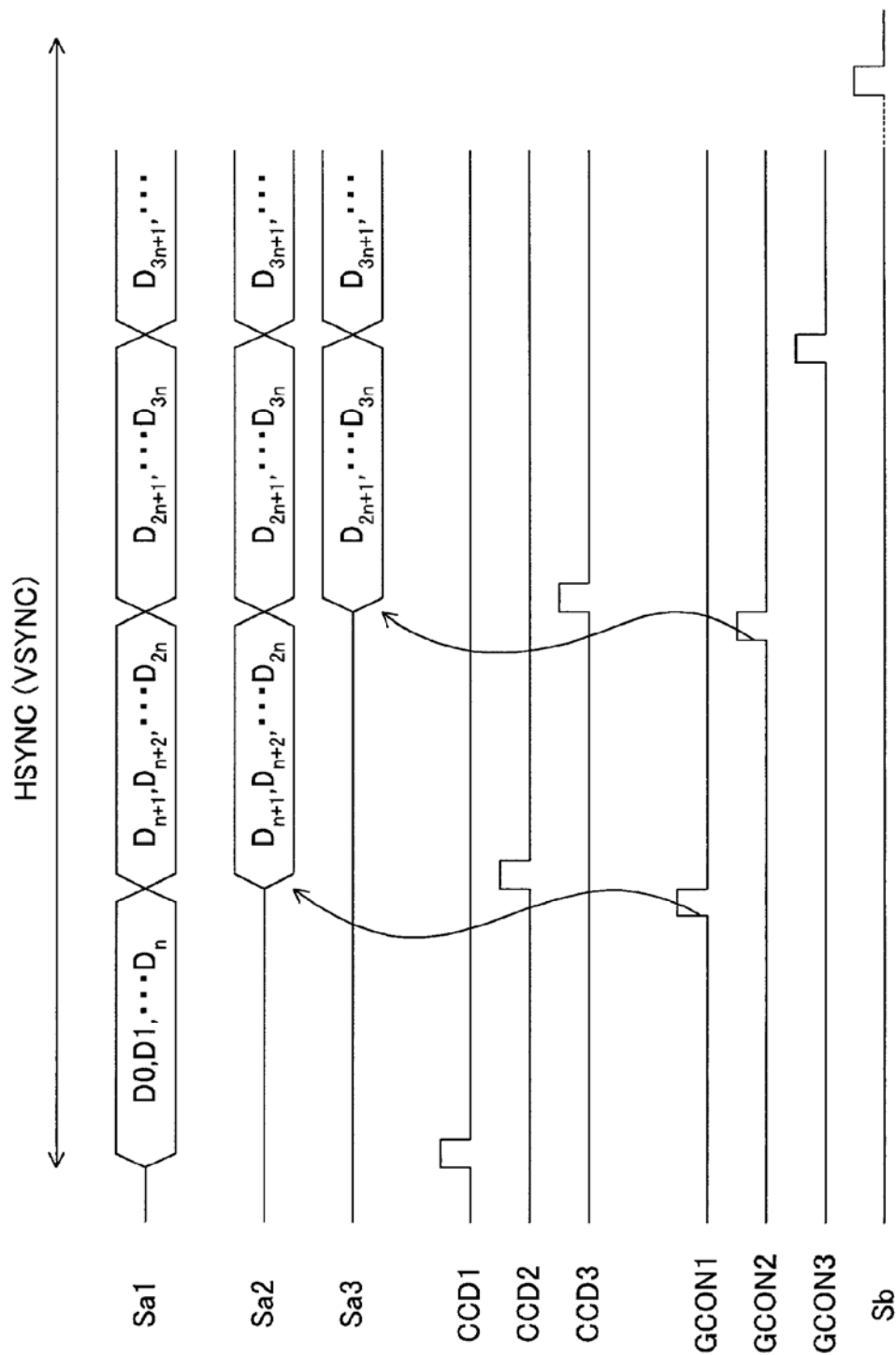
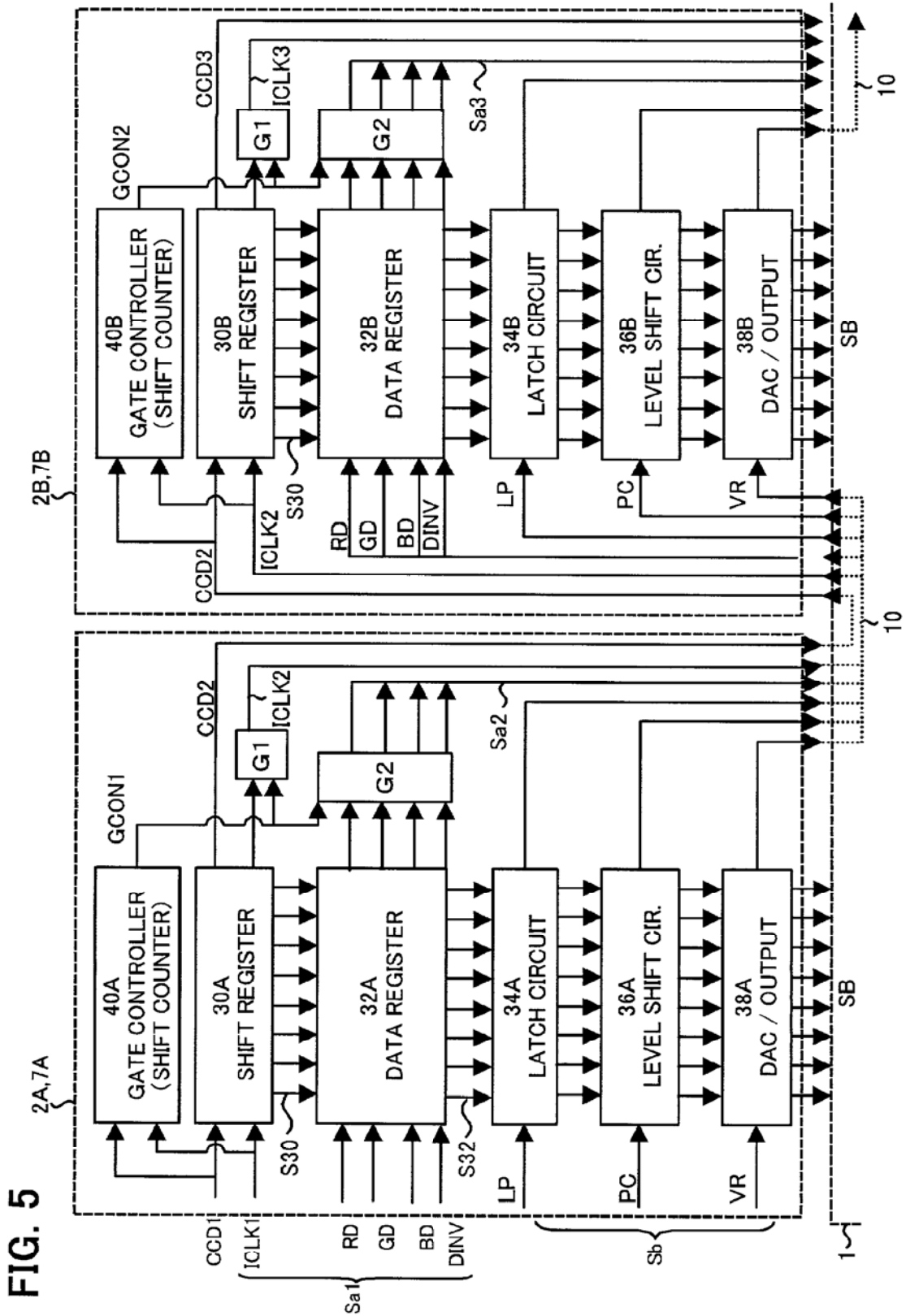


FIG.3

FIG. 4





Explore Litigation Insights

Docket Alarm provides insights to develop a more informed litigation strategy and the peace of mind of knowing you're on top of things.

Real-Time Litigation Alerts



Keep your litigation team up-to-date with **real-time alerts** and advanced team management tools built for the enterprise, all while greatly reducing PACER spend.

Our comprehensive service means we can handle Federal, State, and Administrative courts across the country.

Advanced Docket Research



With over 230 million records, Docket Alarm's cloud-native docket research platform finds what other services can't. Coverage includes Federal, State, plus PTAB, TTAB, ITC and NLRB decisions, all in one place.

Identify arguments that have been successful in the past with full text, pinpoint searching. Link to case law cited within any court document via Fastcase.

Analytics At Your Fingertips



Learn what happened the last time a particular judge, opposing counsel or company faced cases similar to yours.

Advanced out-of-the-box PTAB and TTAB analytics are always at your fingertips.

API

Docket Alarm offers a powerful API (application programming interface) to developers that want to integrate case filings into their apps.

LAW FIRMS

Build custom dashboards for your attorneys and clients with live data direct from the court.

Automate many repetitive legal tasks like conflict checks, document management, and marketing.

FINANCIAL INSTITUTIONS

Litigation and bankruptcy checks for companies and debtors.

E-DISCOVERY AND LEGAL VENDORS

Sync your system to PACER to automate legal marketing.