



US006407795B1

(12) **United States Patent**
Kamizono et al.

(10) **Patent No.:** **US 6,407,795 B1**
(45) **Date of Patent:** **Jun. 18, 2002**

(54) **LIQUID CRYSTAL DISPLAY AND ITS INSPECTING METHOD**

6,266,119 B1 * 7/2001 Takahashi et al. 349/149

(75) Inventors: **Toshihiko Kamizono**, Kagoshima;
Hiroshi Kinoshita; **Tsuyoshi Ishigame**,
both of Ishikawa, all of (JP)

(73) Assignee: **Matsushita Electric Industrial Co., Ltd.**, Osaka (JP)

(*) Notice: Subject to any disclaimer, the term of this patent is extended or adjusted under 35 U.S.C. 154(b) by 0 days.

FOREIGN PATENT DOCUMENTS

JP	62-10622	1/1987
JP	62-36571	3/1987
JP	4-79333	7/1992
JP	5-29030	4/1993
JP	5-241178	9/1993
JP	6-59269	3/1994
JP	8-36189	2/1996
JP	10-74550	3/1998
JP	10-96949	4/1998

* cited by examiner

(21) Appl. No.: **09/914,919**

(22) PCT Filed: **Mar. 7, 2000**

(86) PCT No.: **PCT/JP00/01362**

§ 371 (c)(1),
(2), (4) Date: **Nov. 19, 2001**

(87) PCT Pub. No.: **WO00/54098**

PCT Pub. Date: **Sep. 14, 2000**

(30) **Foreign Application Priority Data**

Mar. 8, 1998 (JP) 11-060064

(51) **Int. Cl.**⁷ **G02F 1/1333**

(52) **U.S. Cl.** **349/149; 349/150; 349/151; 349/152**

(58) **Field of Search** **349/149, 150, 349/151, 152**

(56) **References Cited**

U.S. PATENT DOCUMENTS

6,198,519 B1 * 3/2001 Chang 349/129

Primary Examiner—James Dudek

(74) *Attorney, Agent, or Firm*—Wenderoth, Lind & Ponack, L.L.P.

(57) **ABSTRACT**

A liquid crystal panel (1) includes plural signal lines and scanning lines disposed in matrix, and liquid-crystal-driving LSIs (5, 6) having input and output portions directly connected by thermocompression bonding with an anisotropically conductive adhesive (9). The LSIs are mounted on a conductor on a rim of the panel. Film jumper boards (10, 14), the respective numbers of which correspond to the number of the driving LSIs (5, 6), connects between a terminal conductor (21) at the rim of the liquid crystal panel (1) and circuit boards (12, 16). As a result, a liquid crystal display which can be designed freely, can be modified easily, can employ common components, and can have a defective driving LSI specified and repaired readily and accurately is provided. A method of inspecting the display is also provided.

13 Claims, 16 Drawing Sheets

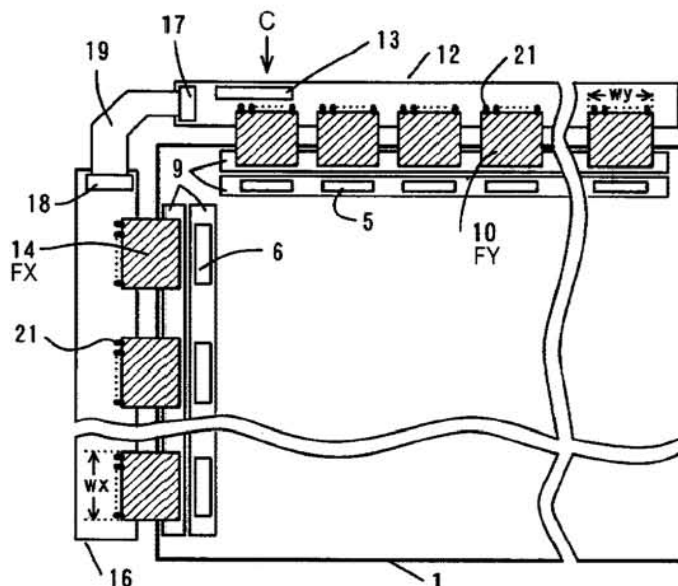


FIG. 1

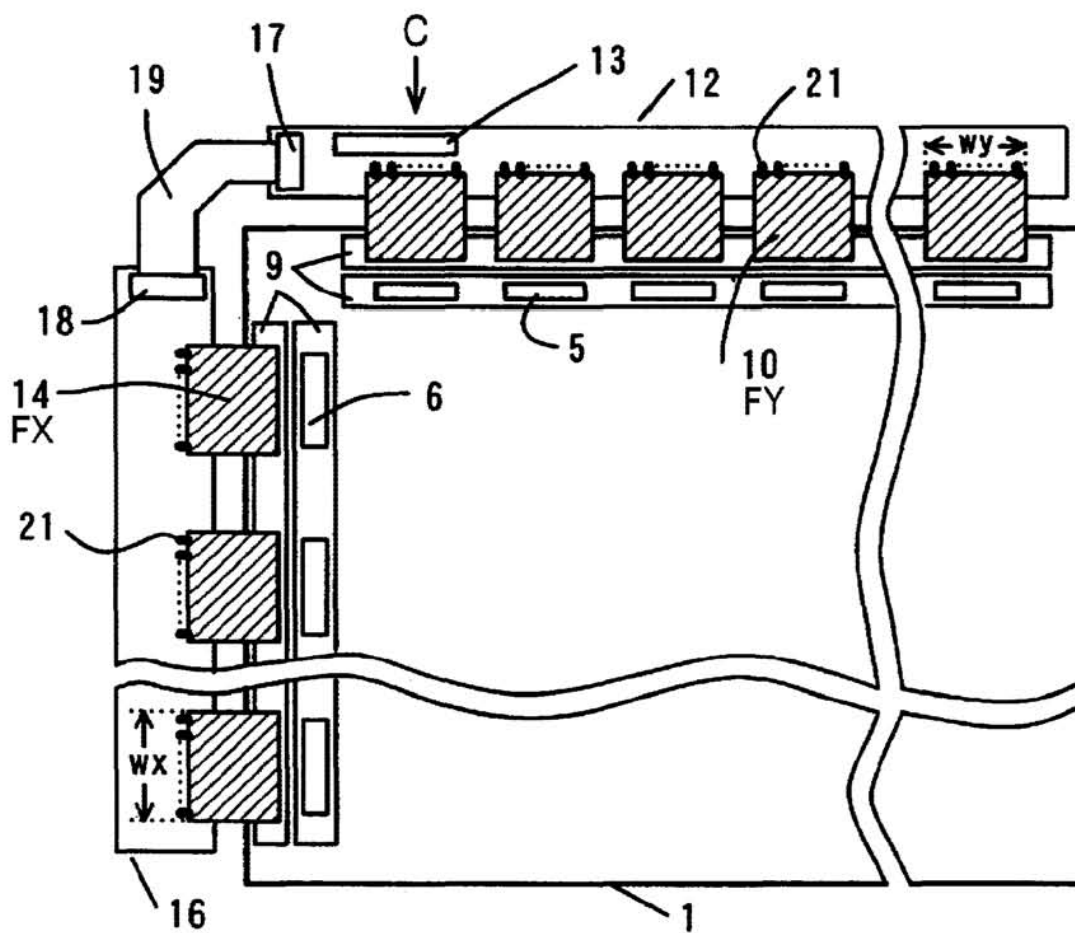


FIG. 2A

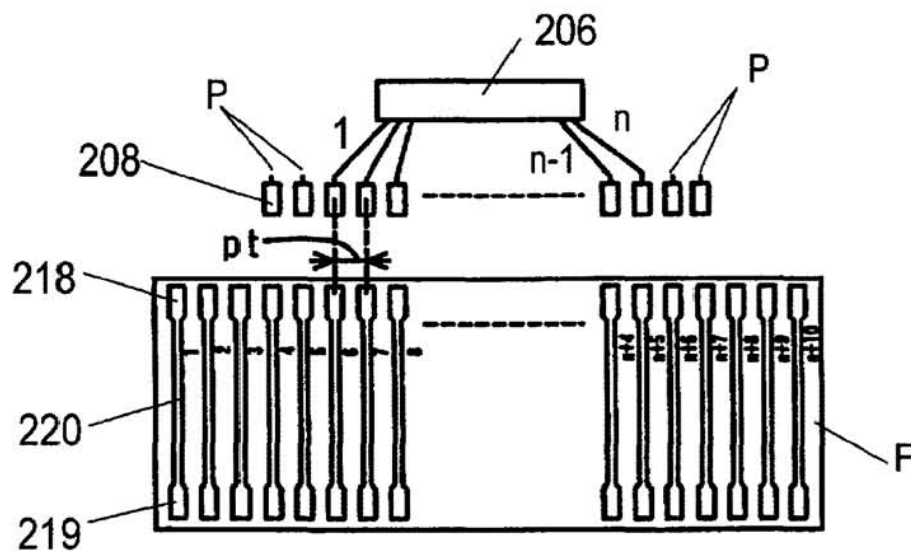


FIG. 2B

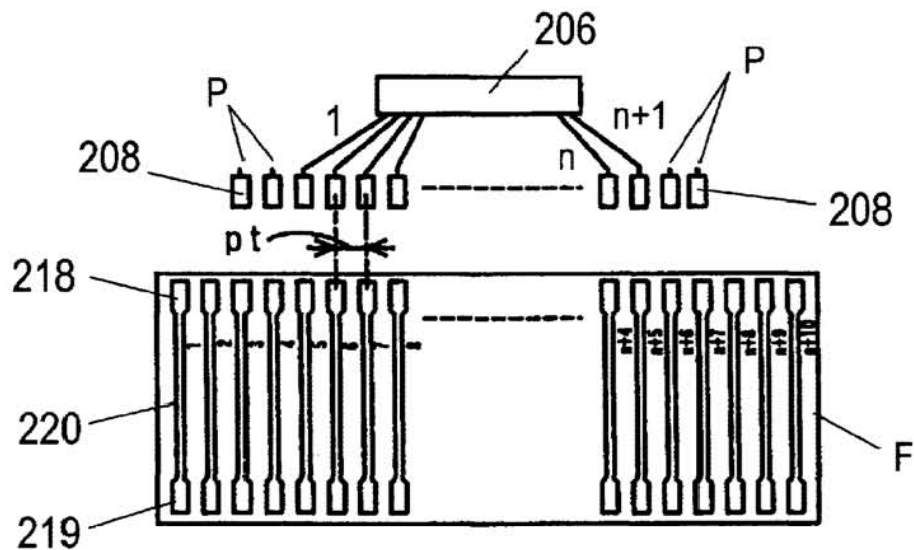


FIG. 3A

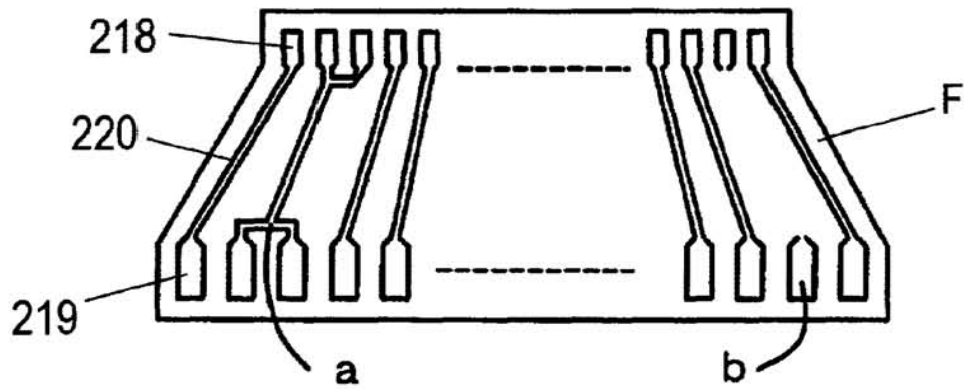


FIG. 3B

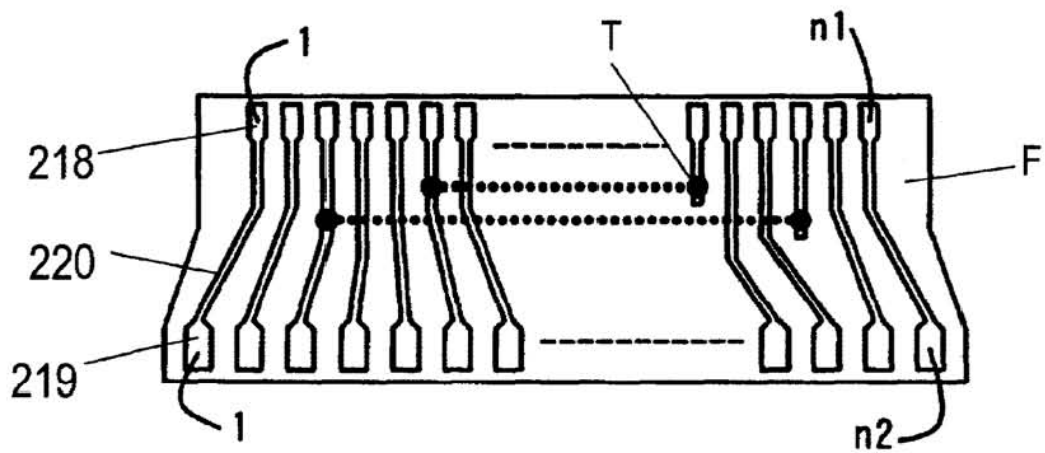
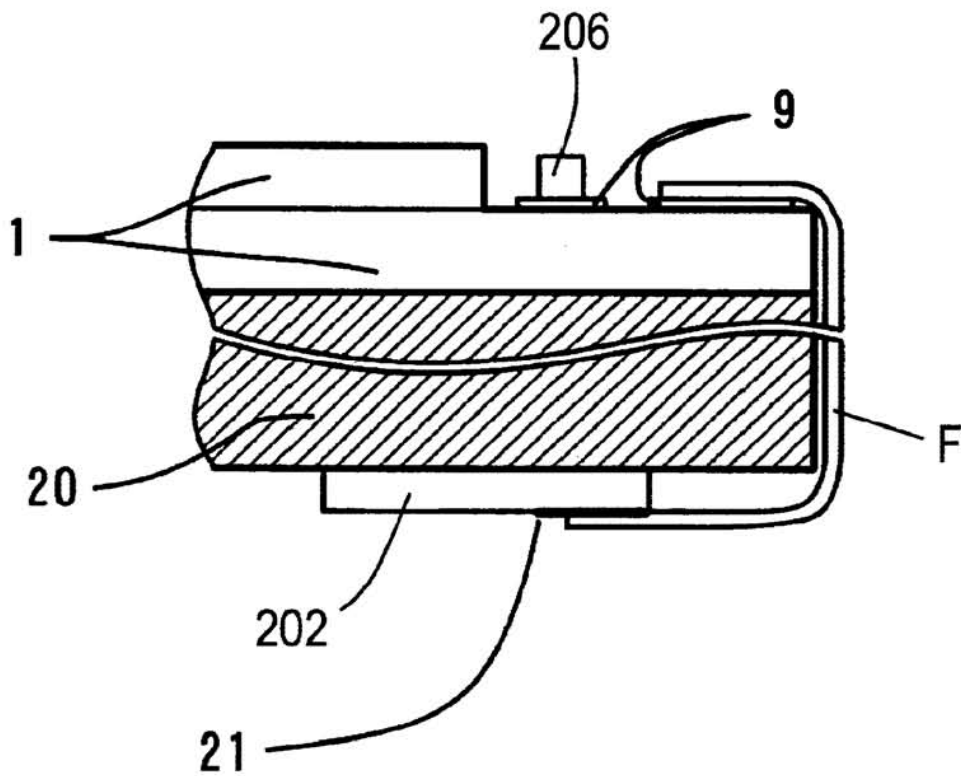


FIG. 4



Explore Litigation Insights

Docket Alarm provides insights to develop a more informed litigation strategy and the peace of mind of knowing you're on top of things.

Real-Time Litigation Alerts



Keep your litigation team up-to-date with **real-time alerts** and advanced team management tools built for the enterprise, all while greatly reducing PACER spend.

Our comprehensive service means we can handle Federal, State, and Administrative courts across the country.

Advanced Docket Research



With over 230 million records, Docket Alarm's cloud-native docket research platform finds what other services can't. Coverage includes Federal, State, plus PTAB, TTAB, ITC and NLRB decisions, all in one place.

Identify arguments that have been successful in the past with full text, pinpoint searching. Link to case law cited within any court document via Fastcase.

Analytics At Your Fingertips



Learn what happened the last time a particular judge, opposing counsel or company faced cases similar to yours.

Advanced out-of-the-box PTAB and TTAB analytics are always at your fingertips.

API

Docket Alarm offers a powerful API (application programming interface) to developers that want to integrate case filings into their apps.

LAW FIRMS

Build custom dashboards for your attorneys and clients with live data direct from the court.

Automate many repetitive legal tasks like conflict checks, document management, and marketing.

FINANCIAL INSTITUTIONS

Litigation and bankruptcy checks for companies and debtors.

E-DISCOVERY AND LEGAL VENDORS

Sync your system to PACER to automate legal marketing.