

[54] MODULAR LARGE-SIZE FORMING LAMP MATRIX SYSTEM

[76] Inventor: Charles Pooley, 6938 Calhoun Ave., Van Nuys, Calif. 91405

[21] Appl. No.: 889,907

[22] Filed: Jul. 28, 1986

[51] Int. Cl.⁴ H04N 5/66

[52] U.S. Cl. 340/780; 340/714; 340/767; 358/240

[58] Field of Search 340/780, 766, 752, 714, 340/716, 795, 792, 799, 700, 701, 702, 703, 760, 767, 815.2; 358/240, 241, 59, 56, 169, 170; 315/105, 106, 107

[56] References Cited

U.S. PATENT DOCUMENTS

4,009,335	2/1977	Payne et al.	358/240
2,999,127	9/1961	Fisher	358/170
3,594,762	7/1971	Gardberg et al.	340/760
3,827,042	7/1974	Mandzsy et al.	340/760
3,941,926	3/1976	Slobodzhan et al.	358/240
4,063,234	12/1977	Arn et al.	358/240
4,134,132	1/1979	Magos et al.	358/240
4,194,215	3/1980	Shionoya	358/240

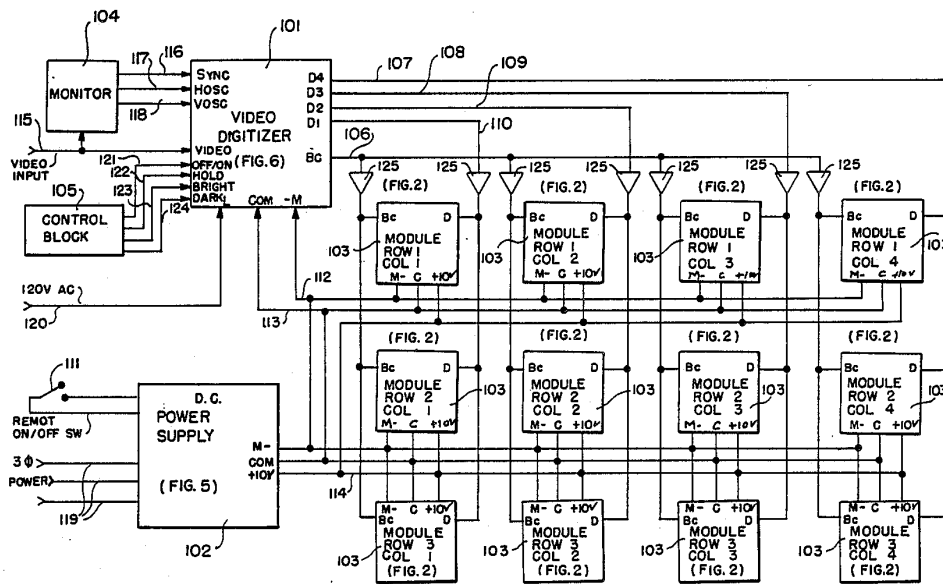
4,384,279	5/1983	Fujita	340/815.2
4,396,866	8/1983	Bay et al.	315/106
4,578,672	3/1986	Oota et al.	340/702

Primary Examiner—John W. Caldwell, Sr.
Assistant Examiner—Alvin Oberley
Attorney, Agent, or Firm—Keith D. Beecher

[57] ABSTRACT

A matrix display system including a unit made up of a plurality of modules, each module containing an array of incandescent lamps which provides a low cost assembly for displaying video images and messages. The unit also includes the necessary electronics to control the brightness of each lamp of the array in order to form images in response to a standard video signal. Relatively simple circuitry is provided for controlling the video sampling, lamp brightness levels, and lamp pre-heat power. All signals are digitized, and no adjustments are required in the display unit itself. Each lamp plugs into the display unit to facilitate replacements. The display unit is divided into a plurality of modules for rapid servicing, and to allow for the possibility of larger or smaller displays by using different numbers of modules.

8 Claims, 8 Drawing Sheets



SYSTEM BLOCK DIAGRAM

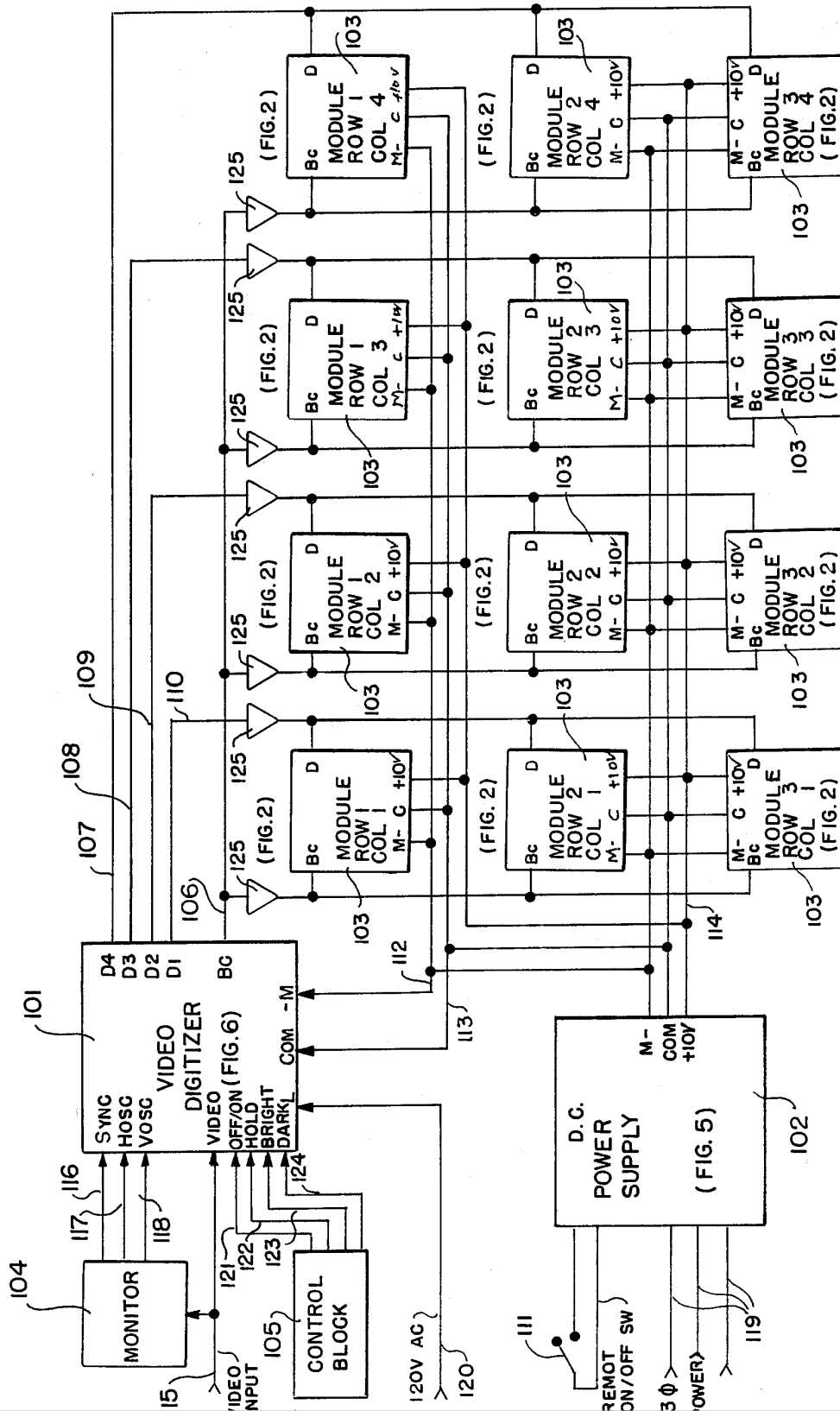


FIG. 1
SYSTEM BLOCK DIAGRAM

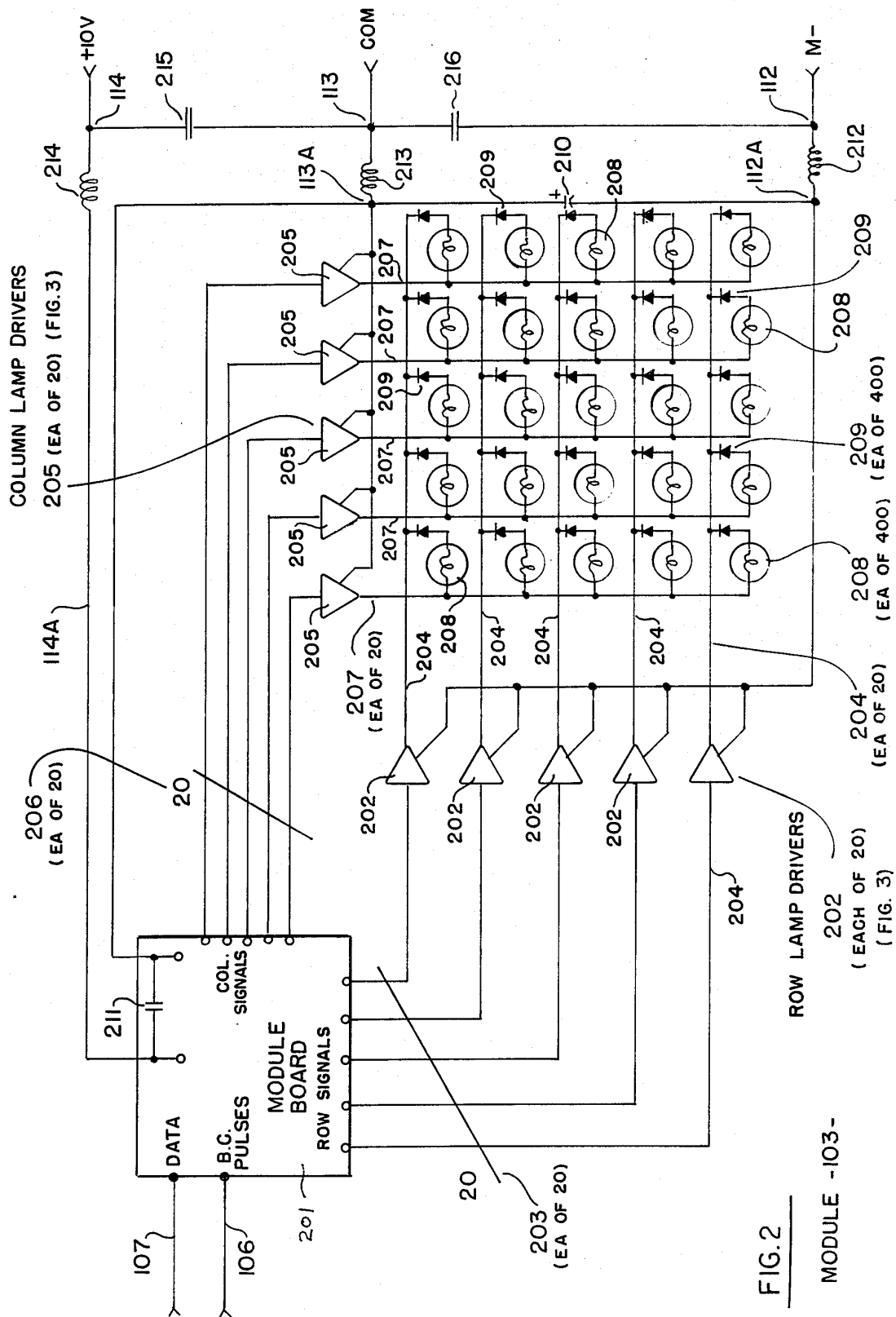


FIG. 2

MODULE -103-

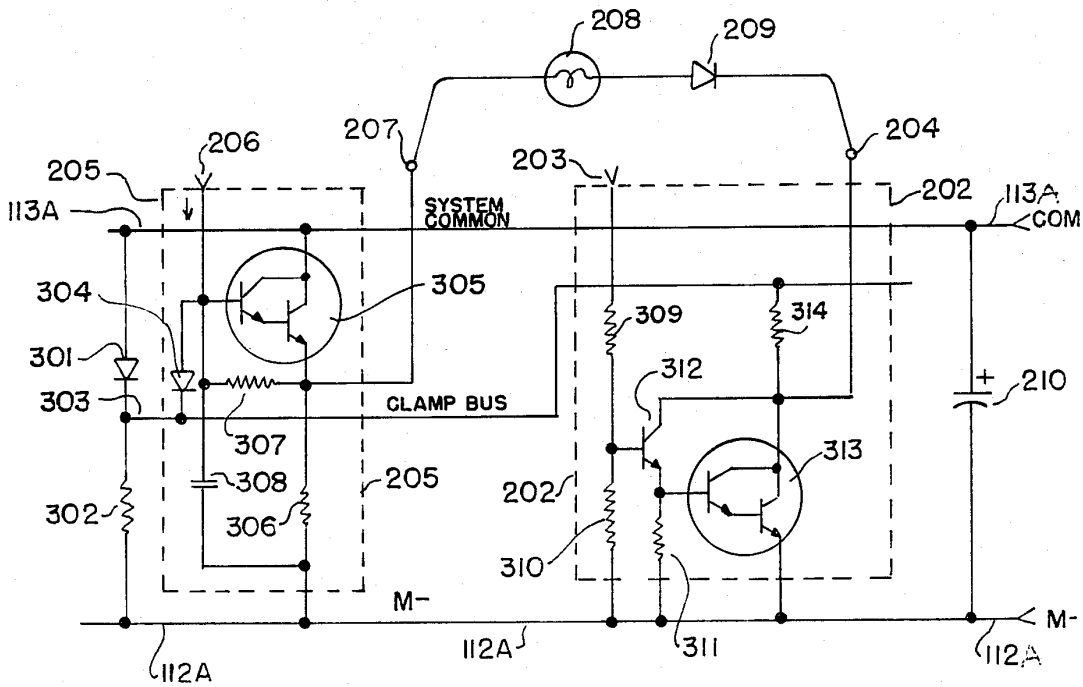
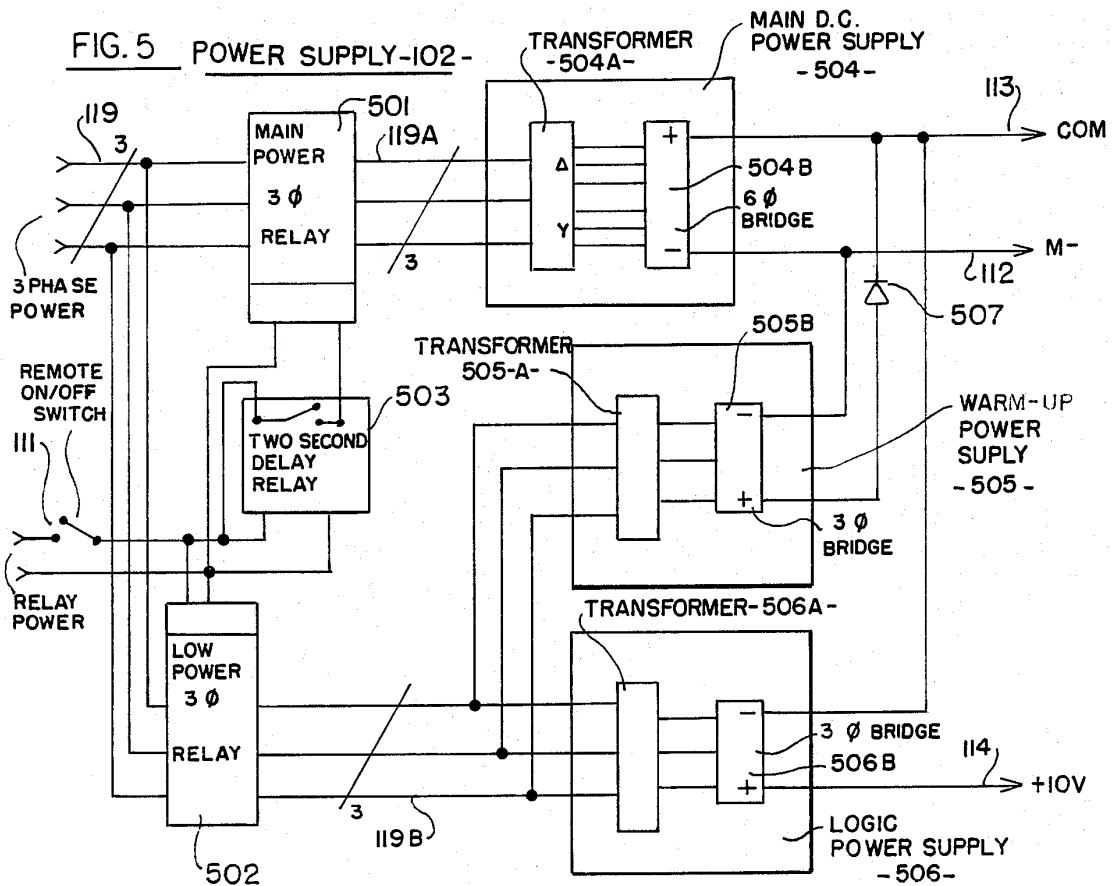


FIG. 3 ROW AND COLUMN LAMP DRIVERS - 202--205-

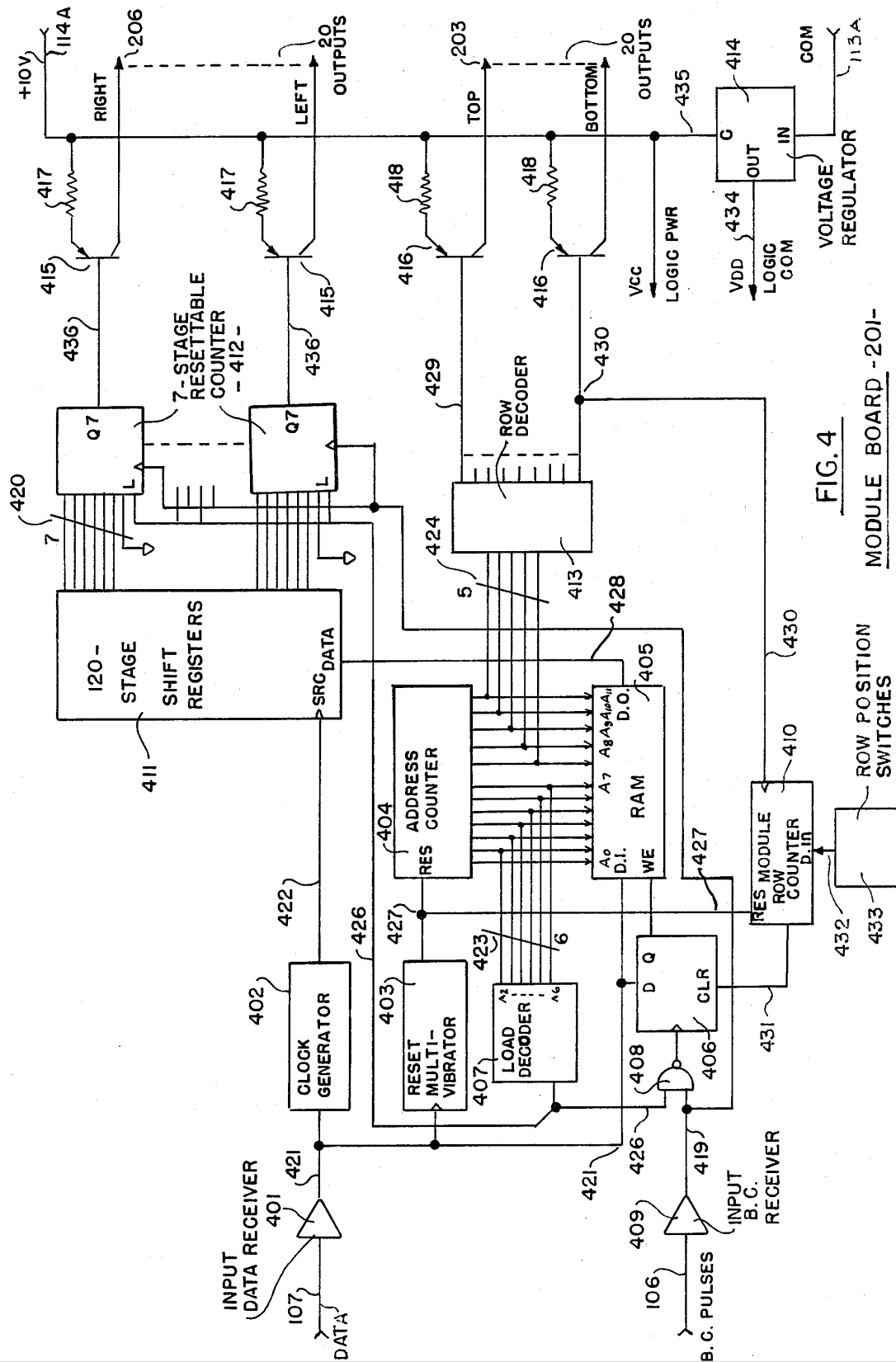


FIG. 4
MODULE BOARD - 201-

Explore Litigation Insights

Docket Alarm provides insights to develop a more informed litigation strategy and the peace of mind of knowing you're on top of things.

Real-Time Litigation Alerts



Keep your litigation team up-to-date with **real-time alerts** and advanced team management tools built for the enterprise, all while greatly reducing PACER spend.

Our comprehensive service means we can handle Federal, State, and Administrative courts across the country.

Advanced Docket Research



With over 230 million records, Docket Alarm's cloud-native docket research platform finds what other services can't. Coverage includes Federal, State, plus PTAB, TTAB, ITC and NLRB decisions, all in one place.

Identify arguments that have been successful in the past with full text, pinpoint searching. Link to case law cited within any court document via Fastcase.

Analytics At Your Fingertips



Learn what happened the last time a particular judge, opposing counsel or company faced cases similar to yours.

Advanced out-of-the-box PTAB and TTAB analytics are always at your fingertips.

API

Docket Alarm offers a powerful API (application programming interface) to developers that want to integrate case filings into their apps.

LAW FIRMS

Build custom dashboards for your attorneys and clients with live data direct from the court.

Automate many repetitive legal tasks like conflict checks, document management, and marketing.

FINANCIAL INSTITUTIONS

Litigation and bankruptcy checks for companies and debtors.

E-DISCOVERY AND LEGAL VENDORS

Sync your system to PACER to automate legal marketing.