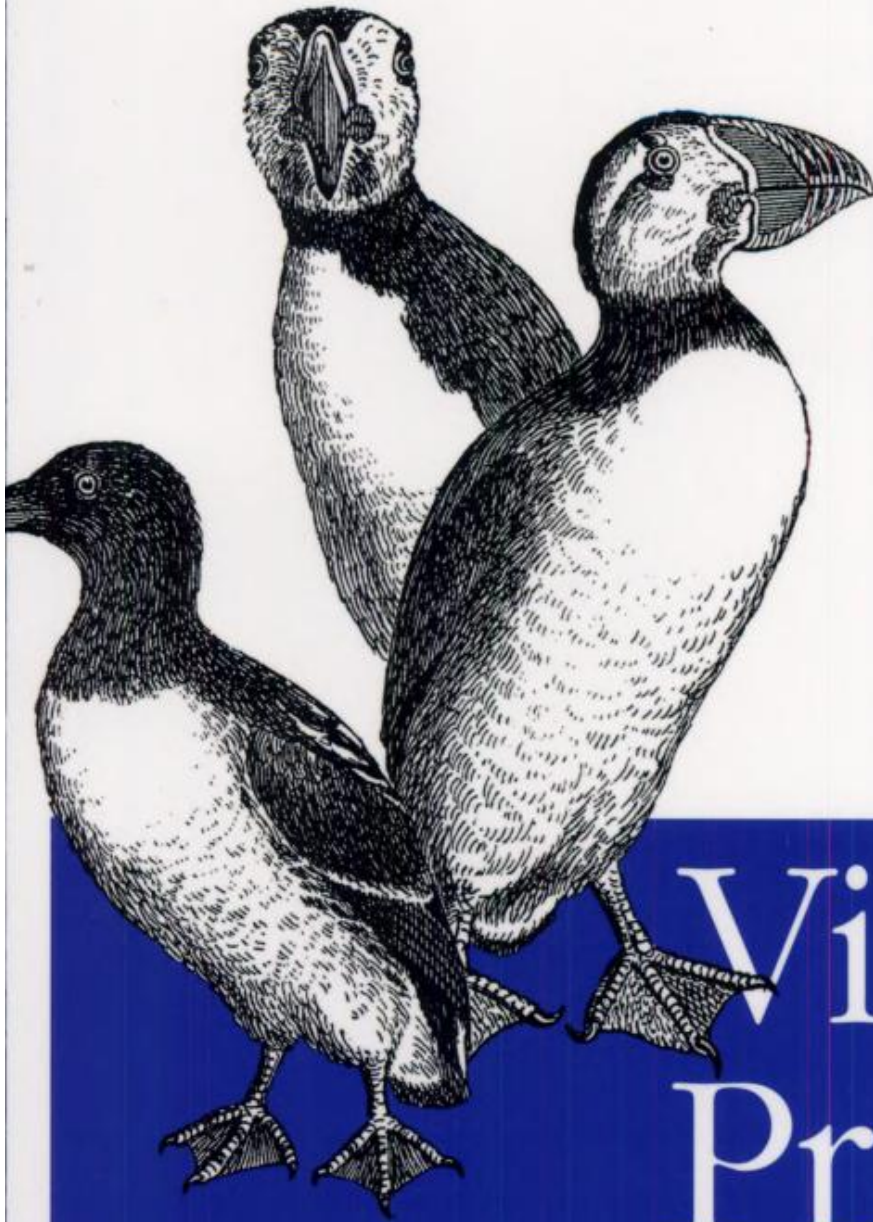


*Turning the Internet Into
Your Private Network*

2nd Edition



Virtual Private Networks

O'REILLY[®]

Charlie Scott, Paul Wolfe & Mike Erwin

**DOCKET
ALARM**

Find authenticated court documents without watermarks at docketalarm.com.

Virtual Private Networks, Second Edition

by Charlie Scott, Paul Wolfe, and Mike Erwin

Copyright © 1999, 1998 O'Reilly & Associates, Inc. All rights reserved.
Printed in the United States of America.

Published by O'Reilly & Associates, Inc., 101 Morris Street, Sebastopol, CA 95472.

Editor: Andy Oram

Production Editor: Jane Ellin

Printing History:

March 1998:	First Edition.
January 1999:	Second Edition.

Nutshell Handbook, the Nutshell Handbook logo, and the O'Reilly logo are registered trademarks of O'Reilly & Associates, Inc. Many of the designations used by manufacturers and sellers to distinguish their products are claimed as trademarks. Where those designations appear in this book, and O'Reilly & Associates, Inc. was aware of a trademark claim, the designations have been printed in caps or initial caps.

The association between the image of puffins and the topic of virtual private networks is a trademark of O'Reilly & Associates, Inc.

While every precaution has been taken in the preparation of this book, the publisher assumes no responsibility for errors or omissions, or for damages resulting from the use of the information contained herein.



This book is printed on acid-free paper with 85% recycled content, 15% post-consumer waste. O'Reilly & Associates is committed to using paper with the highest recycled content available consistent with high quality.

ISBN: 1-56592-529-7

[6/99]

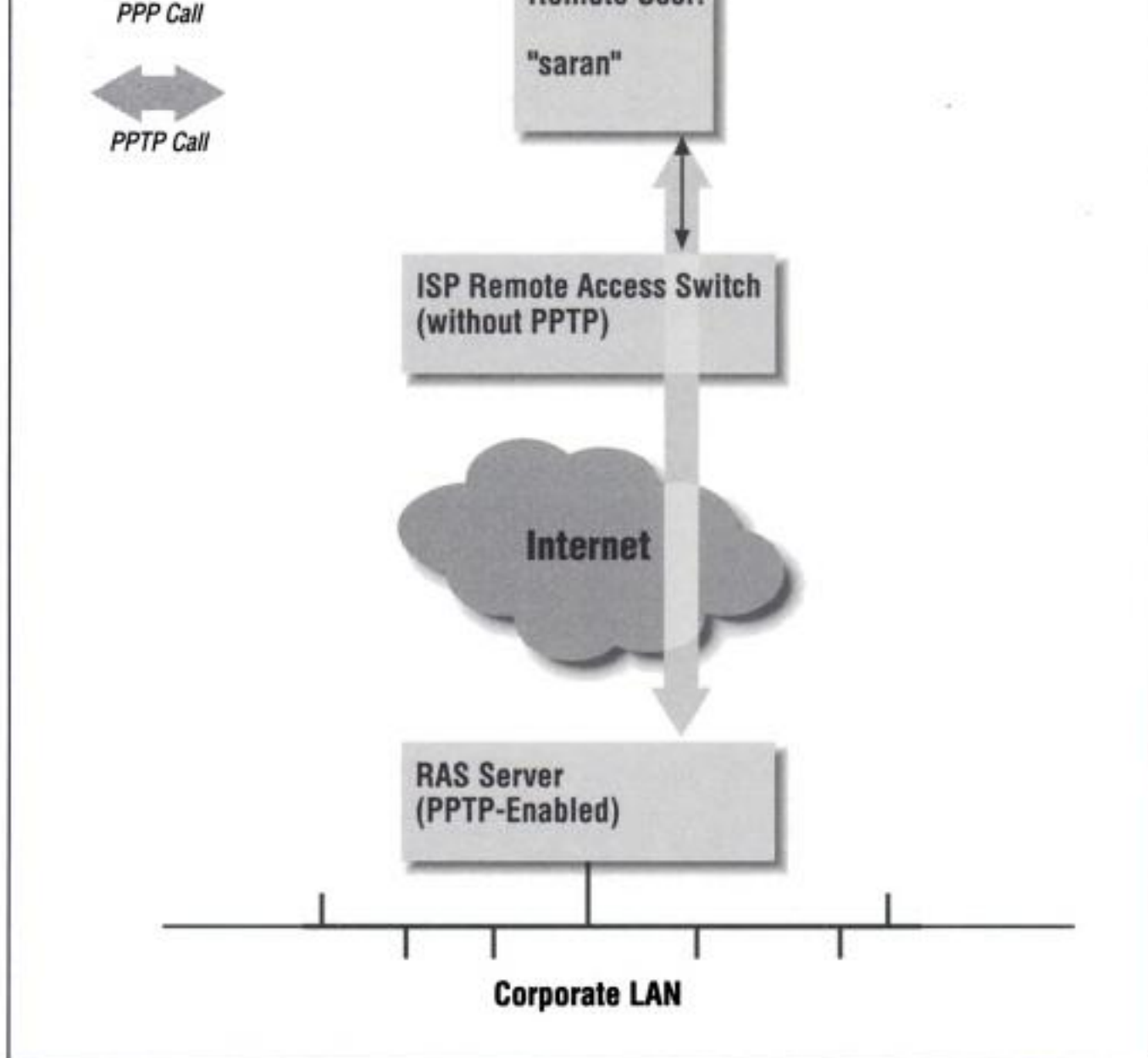


Figure 4-2. Connecting to a corporate RAS server via an ISP that doesn't support PPTP

Where PPTP Fits into Our Scenario

In Figure 4-3 we have a representation of a corporate office network with a T1 connection to the Internet. The router that connects to the Internet is also a packet-filtration firewall. User Sara N. wants to check her corporate email, and is dialing into her ISP, which is using a PPTP-enabled remote access switch. After she connects to the switch, it starts a PPTP call to the RAS server specified in her user profile. In this figure, a lightly shaded line extends the PPTP session back to the client, rather than just to the remote access switch. Sara uses this line when she has to dial into an ISP that doesn't support PPTP, and initiates the PPTP session on her workstation with a second RAS call.

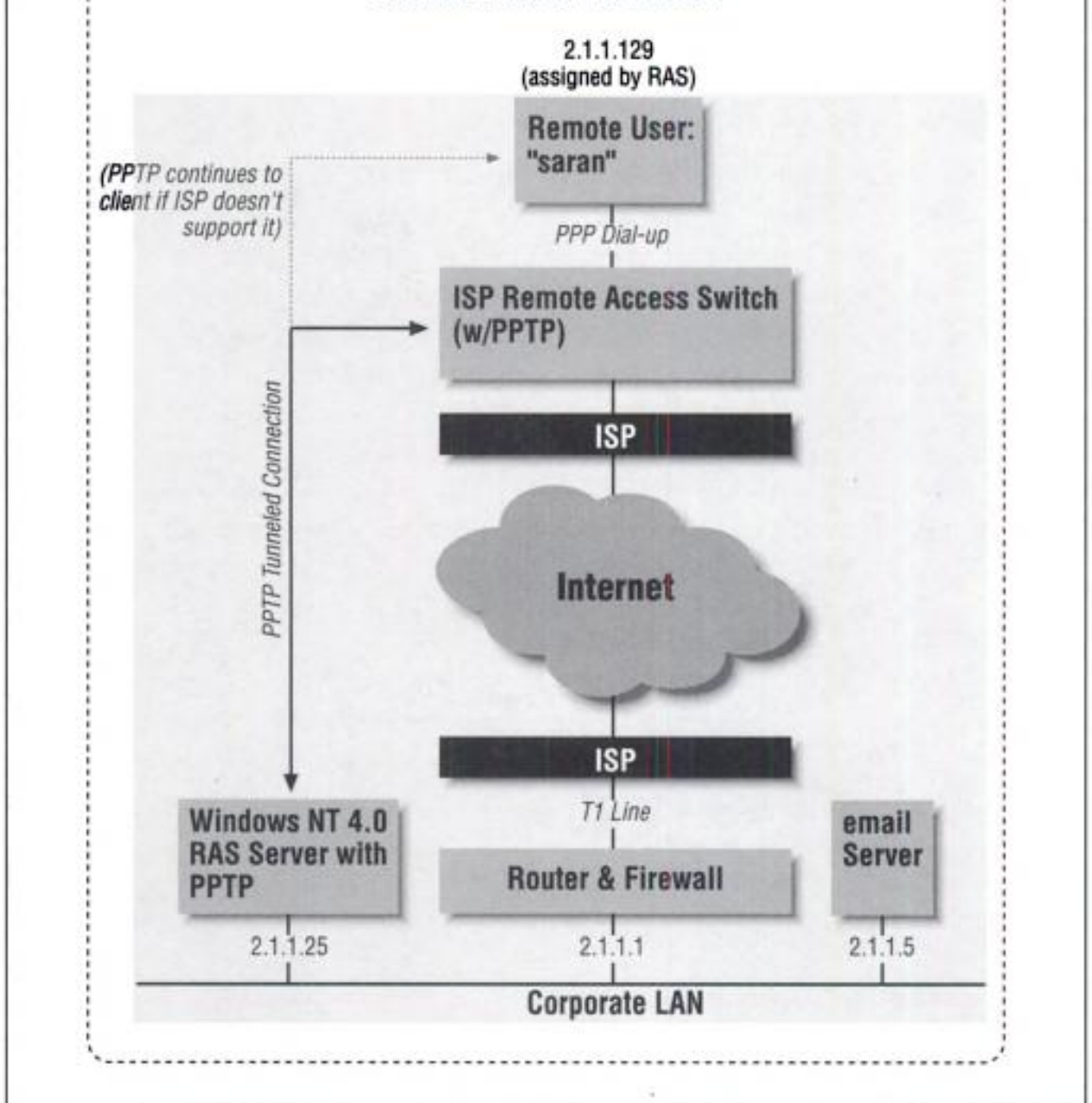


Figure 4-3. A full diagram of a PPTP connection over the Internet

On the corporate router and firewall, the TCP/IP port on which PPTP creates a socket (1723) must be open to both inbound and outbound traffic. If the rest of the network is protected by a firewall that disallows inbound and outbound Internet traffic, then a single point of entry to the LAN is established, which is protected by the user-based authentication.