

(12) **United States Patent**
Schneider et al.

(10) **Patent No.:** **US 6,408,336 B1**
(45) **Date of Patent:** ***Jun. 18, 2002**

(54) **DISTRIBUTED ADMINISTRATION OF ACCESS TO INFORMATION**

(76) Inventors: **David S. Schneider**, 5338 Hinton Ave., Woodland Hills, CA (US) 91367; **Michael B. Ribet**, 3525 Cass Ct. #617, Oak Brook, IL (US) 60523; **Laurence R. Lipstone**, 22724 Sparrow Dell Dr., Calabasas, CA (US) 91302; **Daniel Jensen**, 6853 Encino Ave., Van Nuys, CA (US) 91406

(*) Notice: This patent issued on a continued prosecution application filed under 37 CFR 1.53(d), and is subject to the twenty year patent term provisions of 35 U.S.C. 154(a)(2).

Subject to any disclaimer, the term of this patent is extended or adjusted under 35 U.S.C. 154(b) by 0 days.

(21) Appl. No.: **09/034,507**

(22) Filed: **Mar. 4, 1998**

Related U.S. Application Data

(60) Provisional application No. 60/039,542, filed on Mar. 10, 1997, and provisional application No. 60/040,262, filed on Mar. 10, 1997.

(51) **Int. Cl.**⁷ **G06F 15/16**; G06F 9/00

(52) **U.S. Cl.** **709/229**; 713/201

(58) **Field of Search** 709/225, 229; 713/201; 345/335, 969, 741-743

(56) **References Cited**

U.S. PATENT DOCUMENTS

| | | | |
|---------------|---------|------------------|---------|
| 4,956,769 A * | 9/1990 | Smith | 707/1 |
| 5,012,405 A * | 4/1991 | Nishikado et al. | 707/8 |
| 5,263,157 A * | 11/1993 | Janis | 707/1 |
| 5,263,158 A * | 11/1993 | Janis | 711/163 |
| 5,263,165 A * | 11/1993 | Janis | 707/1 |

(List continued on next page.)

FOREIGN PATENT DOCUMENTS

WO WO 96 05549 A 2/1996 G06F/1/00

OTHER PUBLICATIONS

Computer Dictionary, 2d ed., Microsoft Press, Redmond, Washington, p. 215, Oct. 1993.*

(List continued on next page.)

Primary Examiner—Zarni Maung
Assistant Examiner—Andrew Caldwell
(74) *Attorney, Agent, or Firm*—Gordon E. Nelson

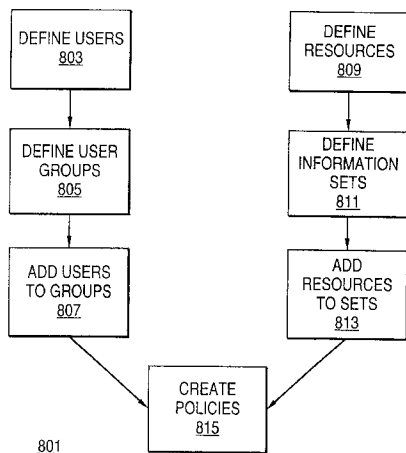
(57) **ABSTRACT**

A scalable access filter that is used together with others like it in a virtual private network to control access by users at clients in the network to information resources provided by servers in the network. Each access filter use a local copy of an access control data base to determine whether an access request made by a user. Changes made by administrators in the local copies are propagated to all of the other local copies. Each user belongs to one or more user groups and each information resource belongs to one or more information sets. Access is permitted or denied according to of access policies which define access in terms of the user groups and information sets. The rights of administrators are similarly determined by administrative policies. Access is further permitted only if the trust levels of a mode of identification of the user and of the path in the network by which the access is made are sufficient for the sensitivity level of the information resource. If necessary, the access filter automatically encrypts the request with an encryption method whose trust level is sufficient. The first access filter in the path performs the access check and encrypts and authenticates the request; the other access filters in the path do not repeat the access check.

48 Claims, 31 Drawing Sheets

U.S. PATENT DOCUMENTS

| | | | |
|---------------|--------|-----------------|---------|
| 5,652,787 A * | 7/1997 | O'Kelly | 379/112 |
| 5,720,033 A * | 2/1998 | Deo | 713/200 |
| 5,787,427 A * | 7/1998 | Benantar et al. | 707/9 |
| 5,787,428 A * | 7/1998 | Hart | 707/9 |



| | | | | |
|-----------|------|---------|---------------------------|---------|
| 5,796,951 | A * | 8/1998 | Hamner et al. | 709/223 |
| 5,826,010 | A * | 10/1998 | Joseph et al. | 713/200 |
| 5,835,726 | A * | 11/1998 | Shwed et al. | 709/229 |
| 5,859,978 | A * | 1/1999 | Sonderegger et al. | 709/226 |
| 5,862,325 | A * | 1/1999 | Reed et al. | 709/201 |
| 5,898,830 | A * | 4/1999 | Wesinger, Jr. et al. | 713/201 |
| 5,931,917 | A * | 8/1999 | Nguyen et al. | 709/250 |
| 5,941,947 | A * | 8/1999 | Brown et al. | 709/225 |
| 5,991,807 | A * | 11/1999 | Schmidt et al. | 709/225 |
| 6,085,191 | A * | 7/2000 | Fisher et al. | 707/9 |
| 6,105,027 | A * | 8/2000 | Schneider et al. | 707/9 |
| 6,178,505 | B1 * | 1/2001 | Schneider et al. | 713/168 |
| 6,253,251 | B1 * | 6/2001 | Benantar et al. | 709/315 |

OTHER PUBLICATIONS

Edwards, K., "Policies and Roles in Collaborative Applications," Proc. of the ACM 1996 Conf. on Computer Supported Cooperative Work, pp. 11–20, Nov. 1996.*

Lampson, B., et al., "Authentication in Distributed Systems: Theory and Practice," Proc. of the 13th ACM Symp. on Operating Systems Principles, pp. 165–182, Oct. 1991.*

Gladney, H., "Access Control for Large Collections," ACM Trans. on Information Systems, vol. 15, No. 2, pp. 154–194, Apr. 1997.*

Shen, H., et al., "Access Control for Collaborative Environments," Conf. Proc. on Computer-Supported Collaborative Work, ACM, pp. 51–58, Nov. 1992.*

Reiter, M., et al., "Integrating Security in a Group Oriented Distributed System," Proc. of Research in Security & Privacy, 1992, IEEE, pp. 18–32, May 1992.*

Toy, M., "AT&T's Electronic Mail Service for Government Users—FTS2000MAIL," Globecom '92, IEEE, vol. 2, pp. 950–957, Dec. 1992.*

Che-fun Yu, Access control and authorization plan for customer control of network services, in: *IEEE Global Telecommunications Conference and exhibition, Conference Record*, vol. 2, pp. 862–869.

PCT/US98/04522, Partial international search, with indications of relevance of the references cited above. (PCT/US98/04522 has the same Specification as the application in which this IDS is being filed).

Checkpoint Firewall-1™ White Paper, Version 2.0—Jun. 1995. <http://www.integralis.co.uk/checkpnt/firewall/white>.

Checkpoint Firewall-1, <http://www.metadigm.co.uk/fwl/>. 1996 Metadigm Ltd.

Commercial Firewalls and Related FW Products, <http://hp735c.csc.cuhk.hk/firewall.html>. Mar. 23, 1996.

Five Domains of Network Security, Technical Overview of the Eagle, <http://www.raptor.com/T22NZ.Z56DAM.BF3AQD.F2>.

Firewalls and Security Related Information, <http://www.na-cisa.nato.int/FWVENDOR.HTM>.

* cited by examiner

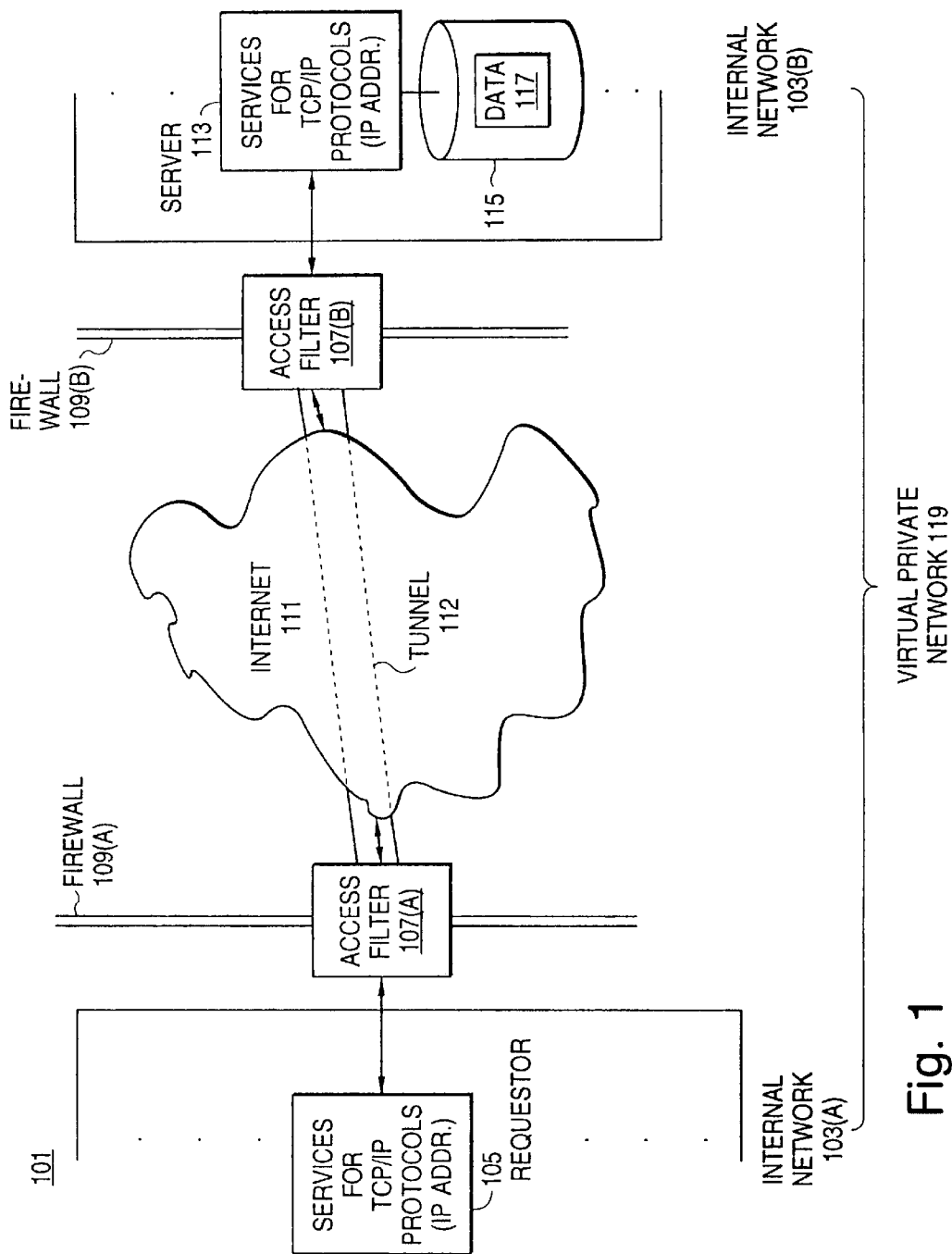


Fig. 1

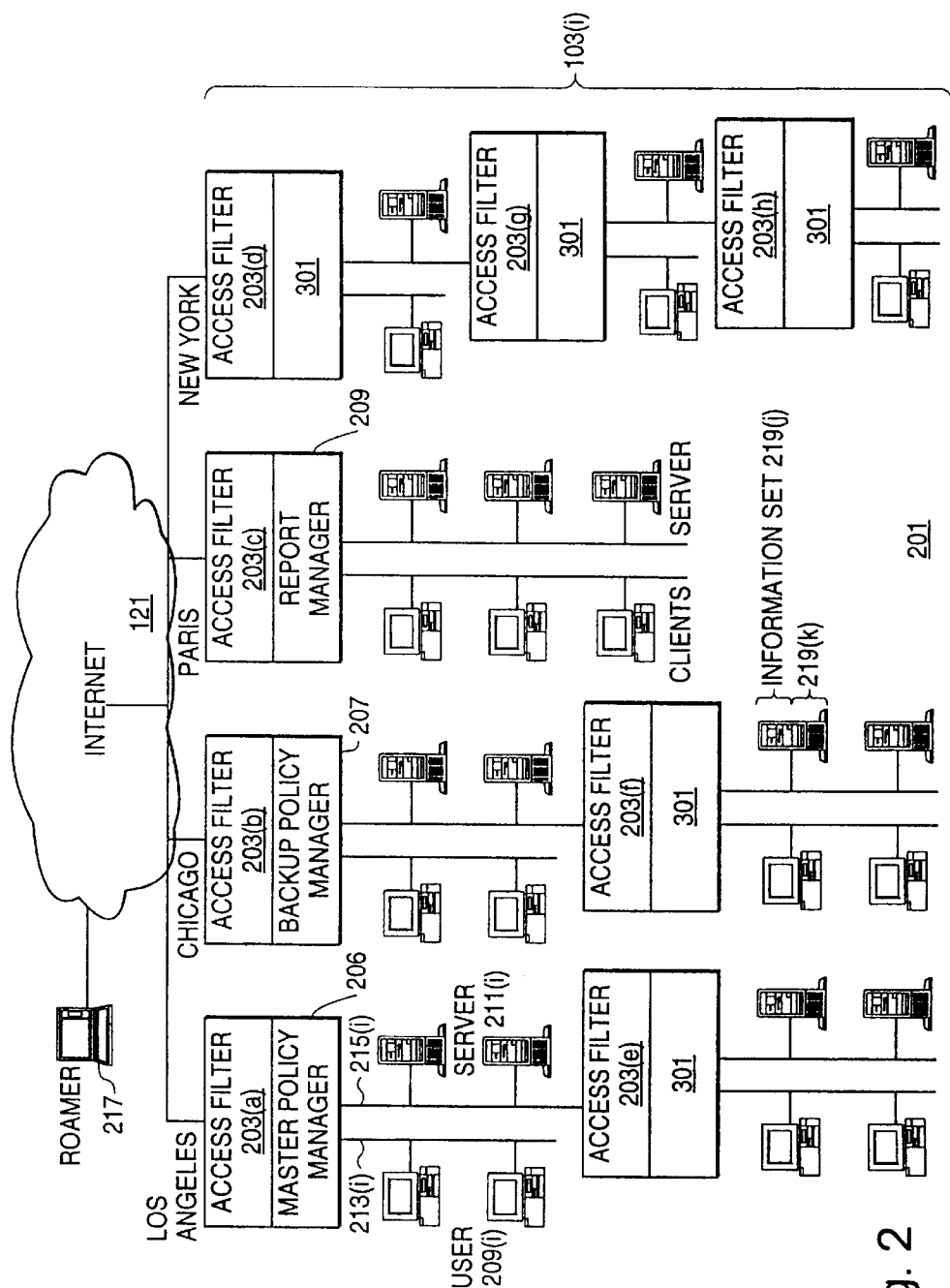


Fig. 2

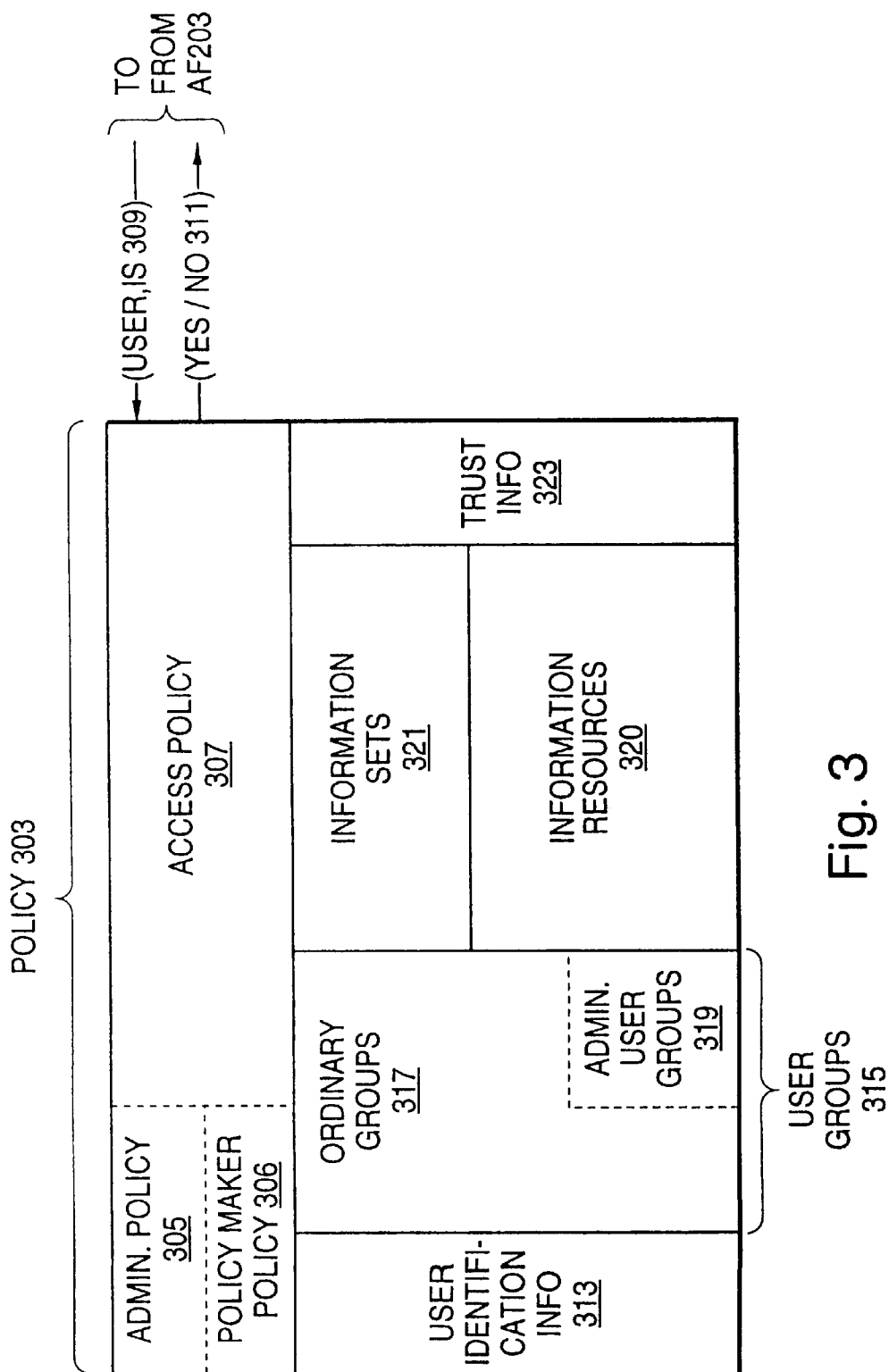


Fig. 3

301

Explore Litigation Insights

Docket Alarm provides insights to develop a more informed litigation strategy and the peace of mind of knowing you're on top of things.

Real-Time Litigation Alerts



Keep your litigation team up-to-date with **real-time alerts** and advanced team management tools built for the enterprise, all while greatly reducing PACER spend.

Our comprehensive service means we can handle Federal, State, and Administrative courts across the country.

Advanced Docket Research



With over 230 million records, Docket Alarm's cloud-native docket research platform finds what other services can't. Coverage includes Federal, State, plus PTAB, TTAB, ITC and NLRB decisions, all in one place.

Identify arguments that have been successful in the past with full text, pinpoint searching. Link to case law cited within any court document via Fastcase.

Analytics At Your Fingertips



Learn what happened the last time a particular judge, opposing counsel or company faced cases similar to yours.

Advanced out-of-the-box PTAB and TTAB analytics are always at your fingertips.

API

Docket Alarm offers a powerful API (application programming interface) to developers that want to integrate case filings into their apps.

LAW FIRMS

Build custom dashboards for your attorneys and clients with live data direct from the court.

Automate many repetitive legal tasks like conflict checks, document management, and marketing.

FINANCIAL INSTITUTIONS

Litigation and bankruptcy checks for companies and debtors.

E-DISCOVERY AND LEGAL VENDORS

Sync your system to PACER to automate legal marketing.