



US006930998B1

(12) **United States Patent**  
Sylvain et al.

(10) **Patent No.:** US 6,930,998 B1  
(45) **Date of Patent:** Aug. 16, 2005

(54) **HYBRID TDM AND ATM VOICE SWITCHING CENTRAL OFFICE AND METHOD OF COMPLETING INTER-OFFICE CALLS USING SAME**

(75) Inventors: **Dany Sylvain**, Gatineau (CA); **Faizel Lakhani**, Kanata (CA)

(73) Assignee: **Nortel Networks Limited**, St. Laurent (CA)

(\*) Notice: Subject to any disclaimer, the term of this patent is extended or adjusted under 35 U.S.C. 154(b) by 0 days.

(21) Appl. No.: **09/206,277**

(22) Filed: **Dec. 7, 1998**

(51) **Int. Cl.**<sup>7</sup> ..... **H04L 12/66**

(52) **U.S. Cl.** ..... **370/352; 370/353; 370/395.61**

(58) **Field of Search** ..... 370/352-356, 370/395.1, 395.52, 395.61, 400-401, 465-466

(56) **References Cited**

**U.S. PATENT DOCUMENTS**

5,204,857	A *	4/1993	Obara	.....	370/354
5,838,682	A *	11/1998	Dekelbaum et al.	.....	370/401
6,282,281	B1 *	8/2001	Low	.....	379/230
6,285,680	B1 *	9/2001	Steinka et al.	.....	370/352
6,349,096	B1 *	2/2002	Liu et al.	.....	370/238
2001/0028644	A1 *	10/2001	Barzegar et al.	.....	370/352
2002/0010818	A1 *	1/2002	Wei et al.	.....	710/62

**FOREIGN PATENT DOCUMENTS**

EP	0719068	A2	6/1996	.....	H04Q 11/04
EP	0792076	A2	8/1997	.....	H04Q 3/00
WO	WO 95/17789		6/1995	.....	H04L 12/64
WO	WO 98/28901		7/1998	.....	H04M 3/50

\* cited by examiner

*Primary Examiner*—John Pezzlo

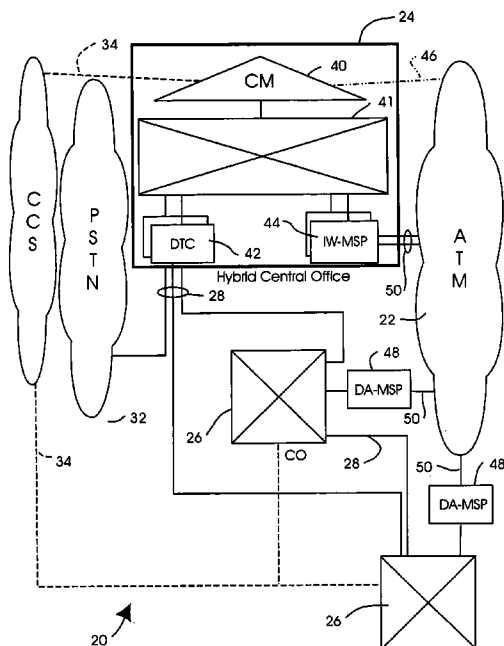
*Assistant Examiner*—Saba Tsegaye

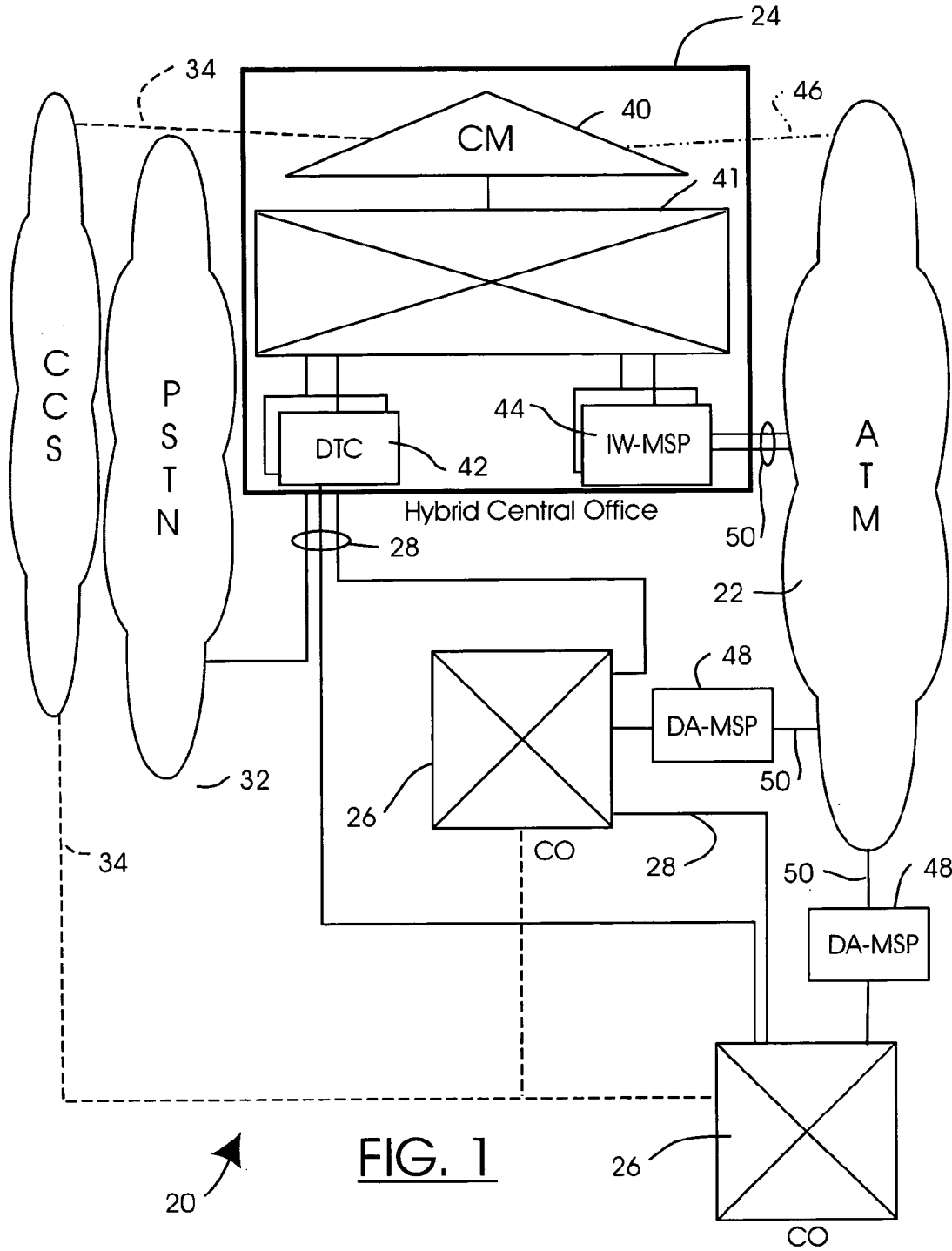
(74) *Attorney, Agent, or Firm*—Withrow & Terranova, PLLC

(57) **ABSTRACT**

A hybrid central office for serving a plurality of subscriber lines while serving as a virtual access tandem to a subnetwork of central offices having a connection to an ATM backbone network is described. The hybrid central office includes a computing module having a messaging interface to the ATM network, an inter-working trunk interface to the ATM network and a trunk connection to the PSTN. The hybrid central office serves as a tandem switch for other central offices connected to the subnetwork. Other central offices are preferably connected to the subnetwork by a signal large trunk group. All inter-office call routing is therefore handled by the hybrid central office. The hybrid central office also provides a gateway to the PSTN. Inter-office calls originated and terminated within the subnetwork are set up by the virtual access tandem but after call set up, the virtual access tandem is not involved in the call. The advantage is the utilization of spare processing capacity in a central office to off-load inter-office trunking congestion, as well as a significant reduction in trunking maintenance costs.

**50 Claims, 7 Drawing Sheets**





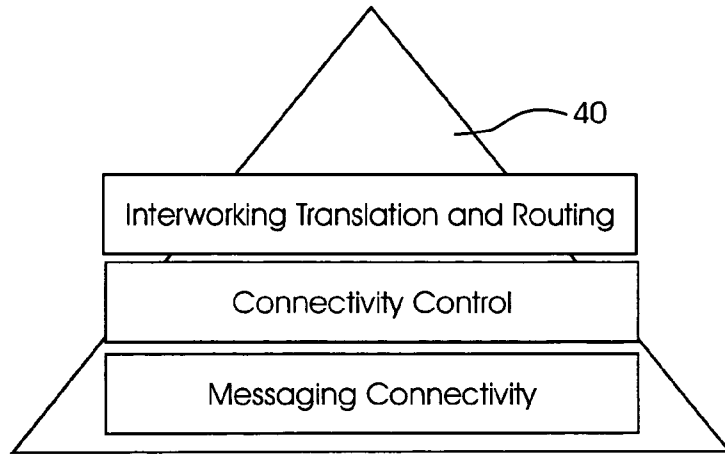


FIG. 2

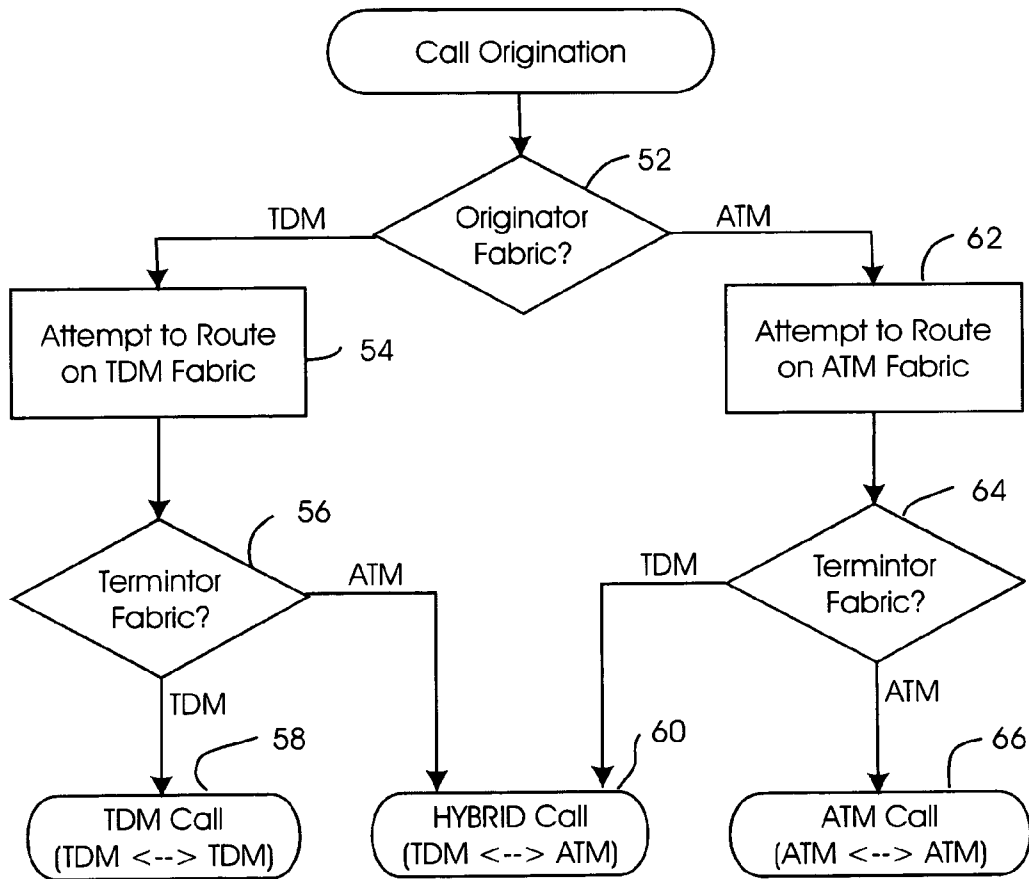


FIG. 3

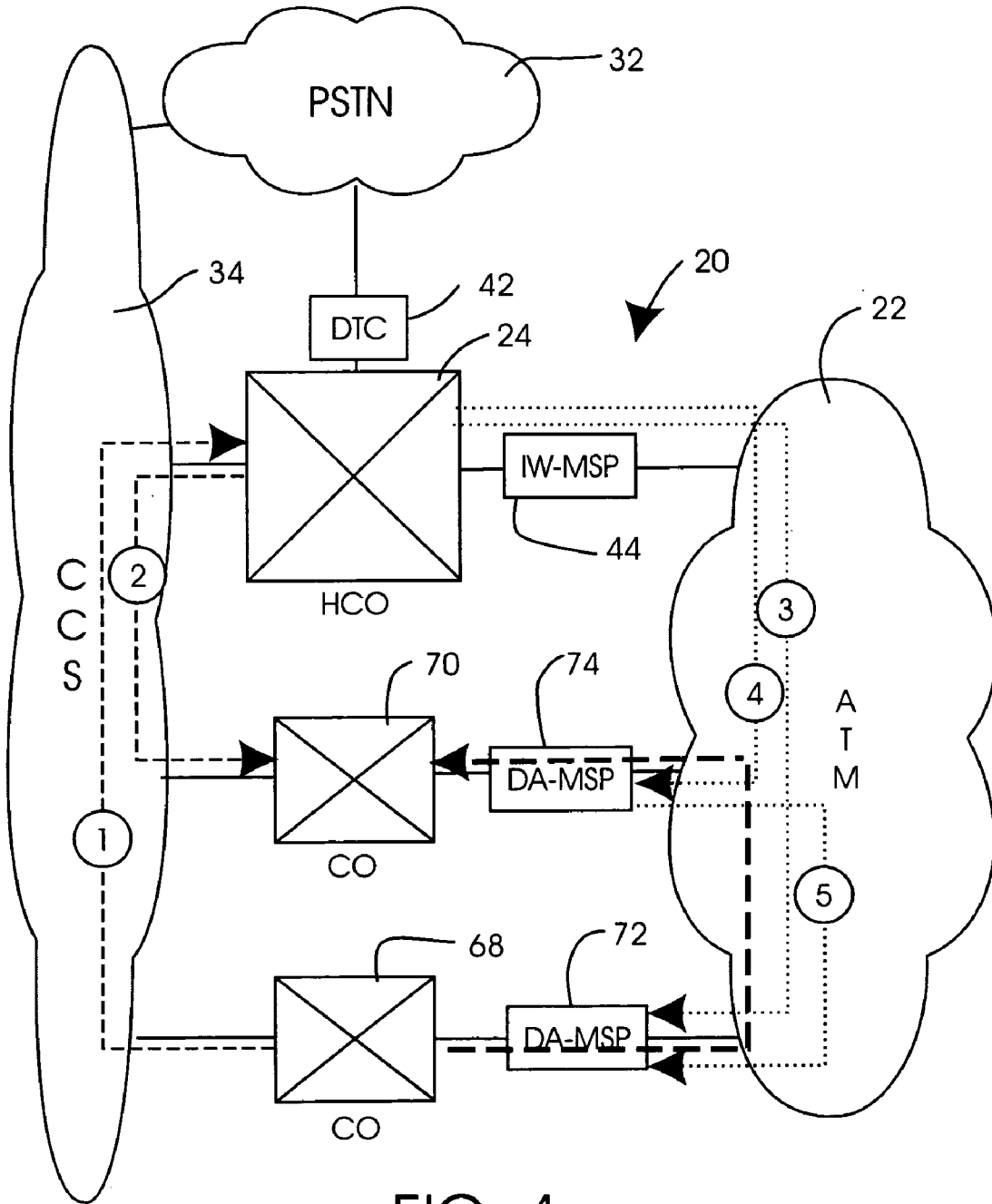


FIG. 4

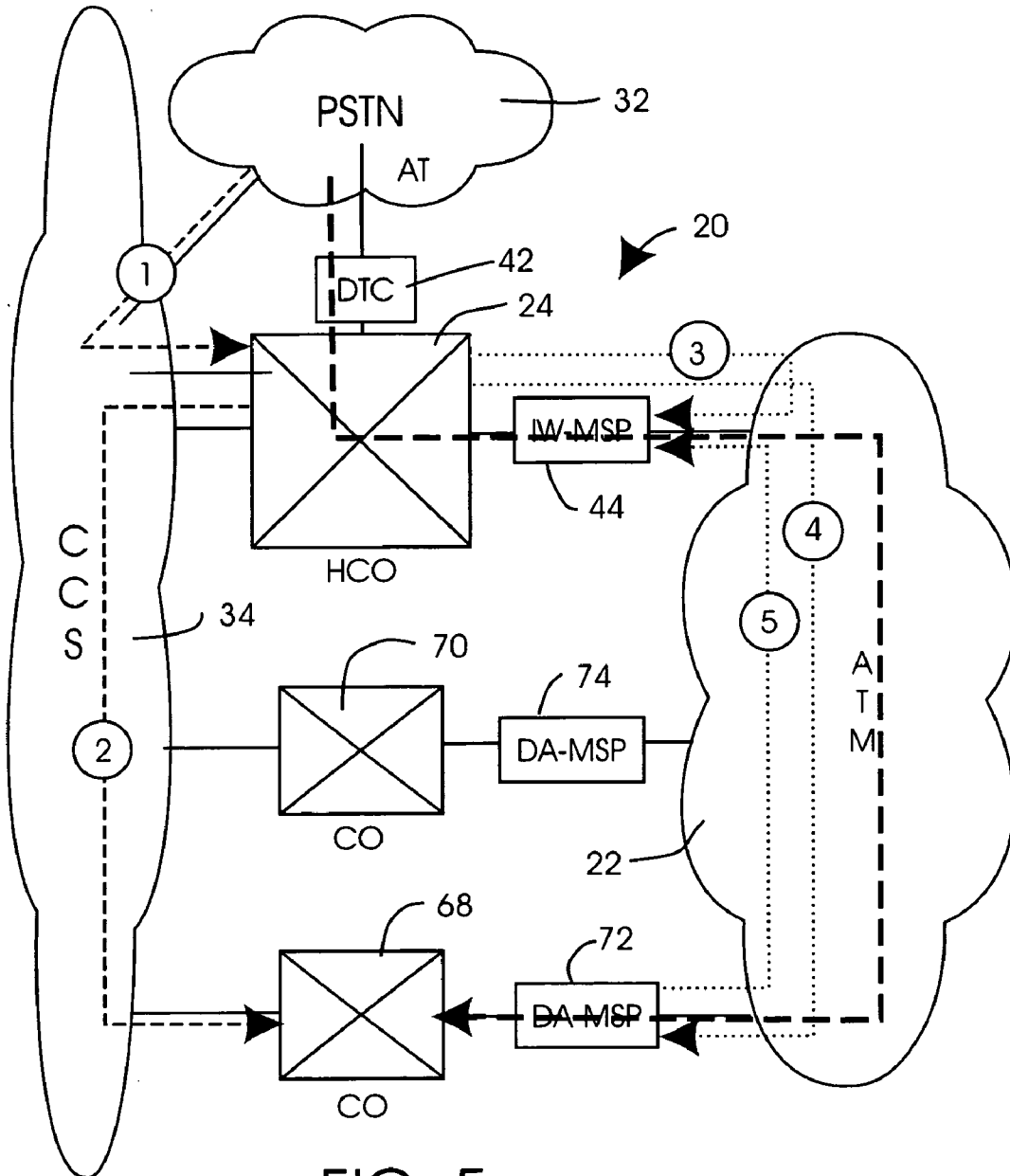


FIG. 5

# Explore Litigation Insights

Docket Alarm provides insights to develop a more informed litigation strategy and the peace of mind of knowing you're on top of things.

## Real-Time Litigation Alerts



Keep your litigation team up-to-date with **real-time alerts** and advanced team management tools built for the enterprise, all while greatly reducing PACER spend.

Our comprehensive service means we can handle Federal, State, and Administrative courts across the country.

## Advanced Docket Research



With over 230 million records, Docket Alarm's cloud-native docket research platform finds what other services can't. Coverage includes Federal, State, plus PTAB, TTAB, ITC and NLRB decisions, all in one place.

Identify arguments that have been successful in the past with full text, pinpoint searching. Link to case law cited within any court document via Fastcase.

## Analytics At Your Fingertips



Learn what happened the last time a particular judge, opposing counsel or company faced cases similar to yours.

Advanced out-of-the-box PTAB and TTAB analytics are always at your fingertips.

## API

Docket Alarm offers a powerful API (application programming interface) to developers that want to integrate case filings into their apps.

## LAW FIRMS

Build custom dashboards for your attorneys and clients with live data direct from the court.

Automate many repetitive legal tasks like conflict checks, document management, and marketing.

## FINANCIAL INSTITUTIONS

Litigation and bankruptcy checks for companies and debtors.

## E-DISCOVERY AND LEGAL VENDORS

Sync your system to PACER to automate legal marketing.