



[54] HYBRID DRIVE SYSTEM FOR MOTOR VEHICLE, HAVING MEANS FOR INHIBITING ELECTRICITY GENERATING DRIVE MODE

[75] Inventors: Ryuji Ibaraki, Toyota; Yutaka Taga, Aichi-ken; Atsushi Tabata, Okazaki, all of Japan

[73] Assignee: Toyota Jidosha Kabushiki Kaisha, Toyota, Japan

[\*] Notice: This patent issued on a continued prosecution application filed under 37 CFR 1.53(d), and is subject to the twenty year patent term provisions of 35 U.S.C. 154(a)(2).

[21] Appl. No.: 08/725,710

[22] Filed: Oct. 4, 1996

[30] Foreign Application Priority Data

Oct. 5, 1995 [JP] Japan ..... 7-258400

[51] Int. Cl.<sup>6</sup> ..... B60K 6/04

[52] U.S. Cl. .... 180/65.2; 180/65.4

[58] Field of Search ..... 180/65.2, 65.3, 180/65.4, 65.6; 701/101

[56] References Cited

U.S. PATENT DOCUMENTS

4,305,254	12/1981	Kawakatsu et al.	180/65.2
4,335,429	6/1982	Kawakatsu	180/65.2
4,588,040	5/1986	Albright, Jr. et al.	180/65.4
5,343,970	9/1994	Severinsky	180/65.2
5,495,906	3/1996	Furutani	180/65.4
5,670,830	9/1997	Koga et al.	180/65.2
5,697,466	12/1997	Moroto et al.	180/65.2
5,927,415	7/1999	Ibaraki et al.	180/65.3

FOREIGN PATENT DOCUMENTS

5-50865	3/1993	Japan .
5-199605	8/1993	Japan .
6-38304	2/1994	Japan .

OTHER PUBLICATIONS

Patent Abstracts of Japan, vol. 18, No. 335, (M-1627) Jun. 24, 1994, JP-6080048, Mar. 22, 1994.

Patent Abstracts of Japan, vol. 95, No. 3, JP7-067208, Mar. 10, 1995.

IEE Proceedings-D/Control Theory and Applications, vol. 134, No. 6, pp. 373-387, Nov. 1987, J.R. Bumby, et al., "Optimisation and Control of a Hybrid Electric Car".

Primary Examiner—J. J. Swann

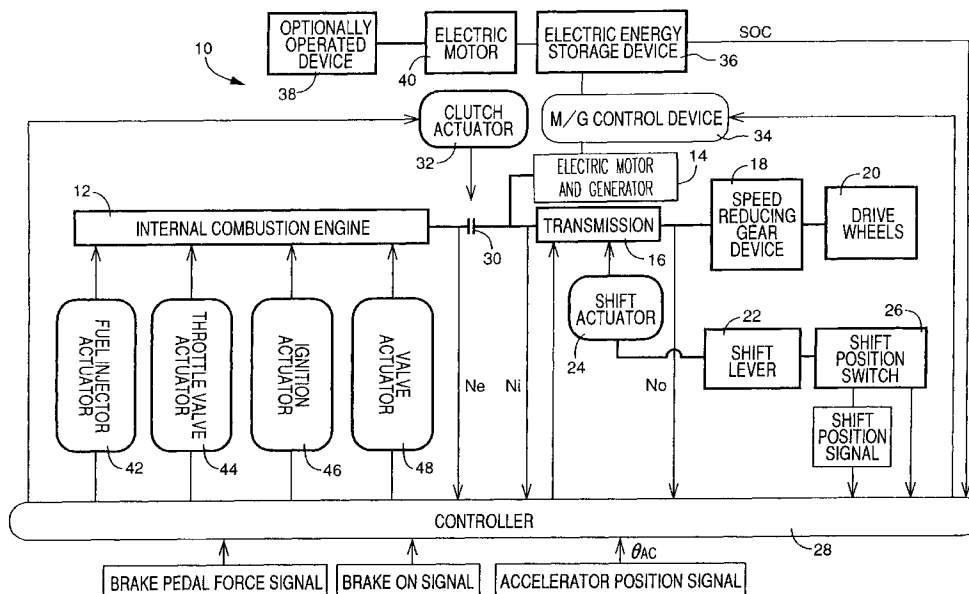
Assistant Examiner—Frank Vanaman

Attorney, Agent, or Firm—Oblon, Spivak, McClelland, Maier & Neustadt, P.C.

[57] ABSTRACT

Hybrid motor vehicle drive system including an electric motor operated by an electric energy generated by an electric generator and stored in a storage device, an engine, and a controller for controlling the engine and electric generator to operate in an electricity generating drive mode when a predetermined condition is satisfied, such that the engine is operated so as to provide an output greater than a required power to drive the motor vehicle, so that the vehicle is driven by the engine with the required power while the electric generator is operated by the engine with a surplus power to charge the storage, and wherein the controller includes a special control device operated in the event of a failure of the electric generator, for inhibiting the selection of the electricity generating drive mode and selecting an engine drive mode to operate the engine for driving the motor vehicle with the required power, even when the predetermined condition is satisfied.

15 Claims, 4 Drawing Sheets



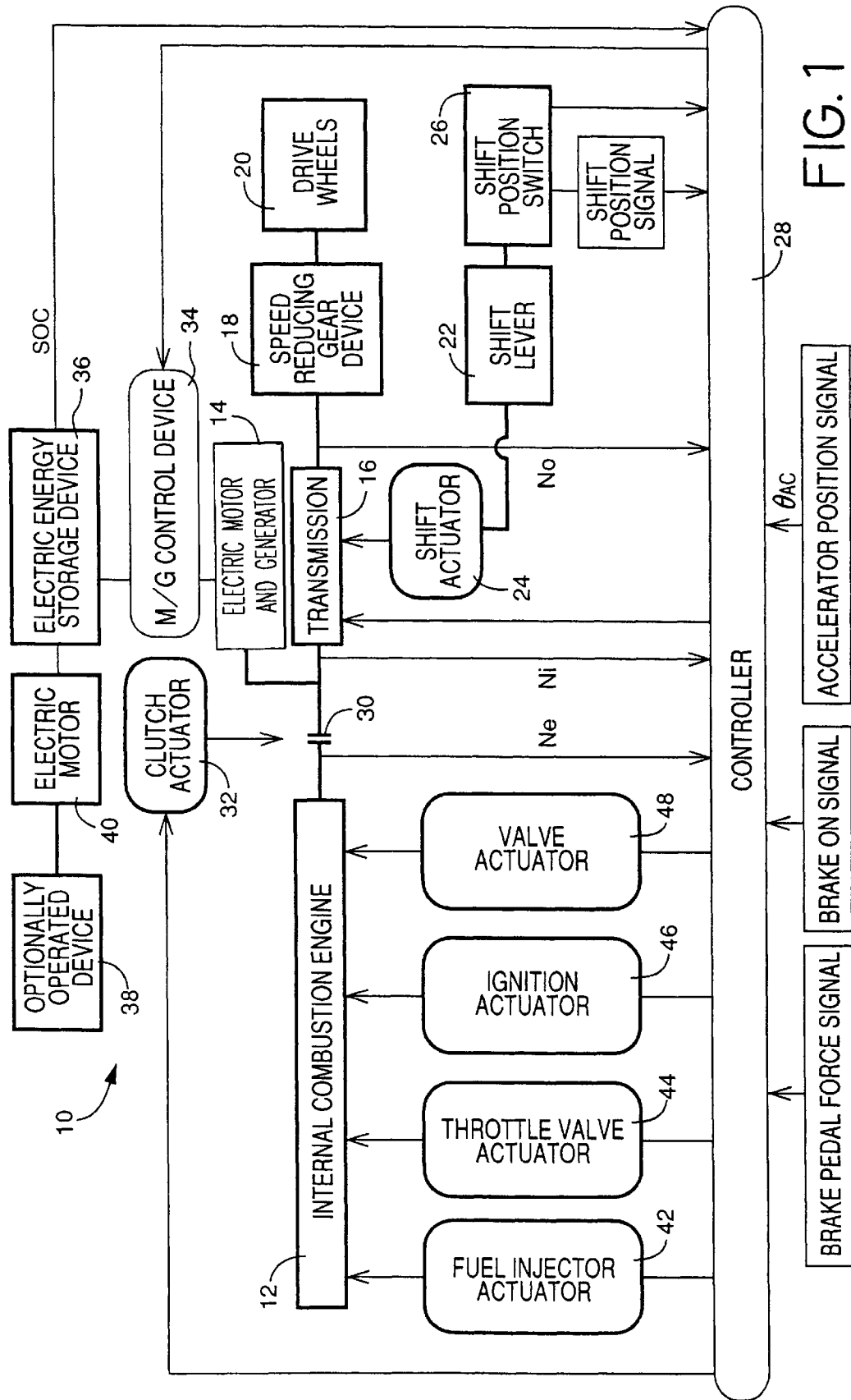
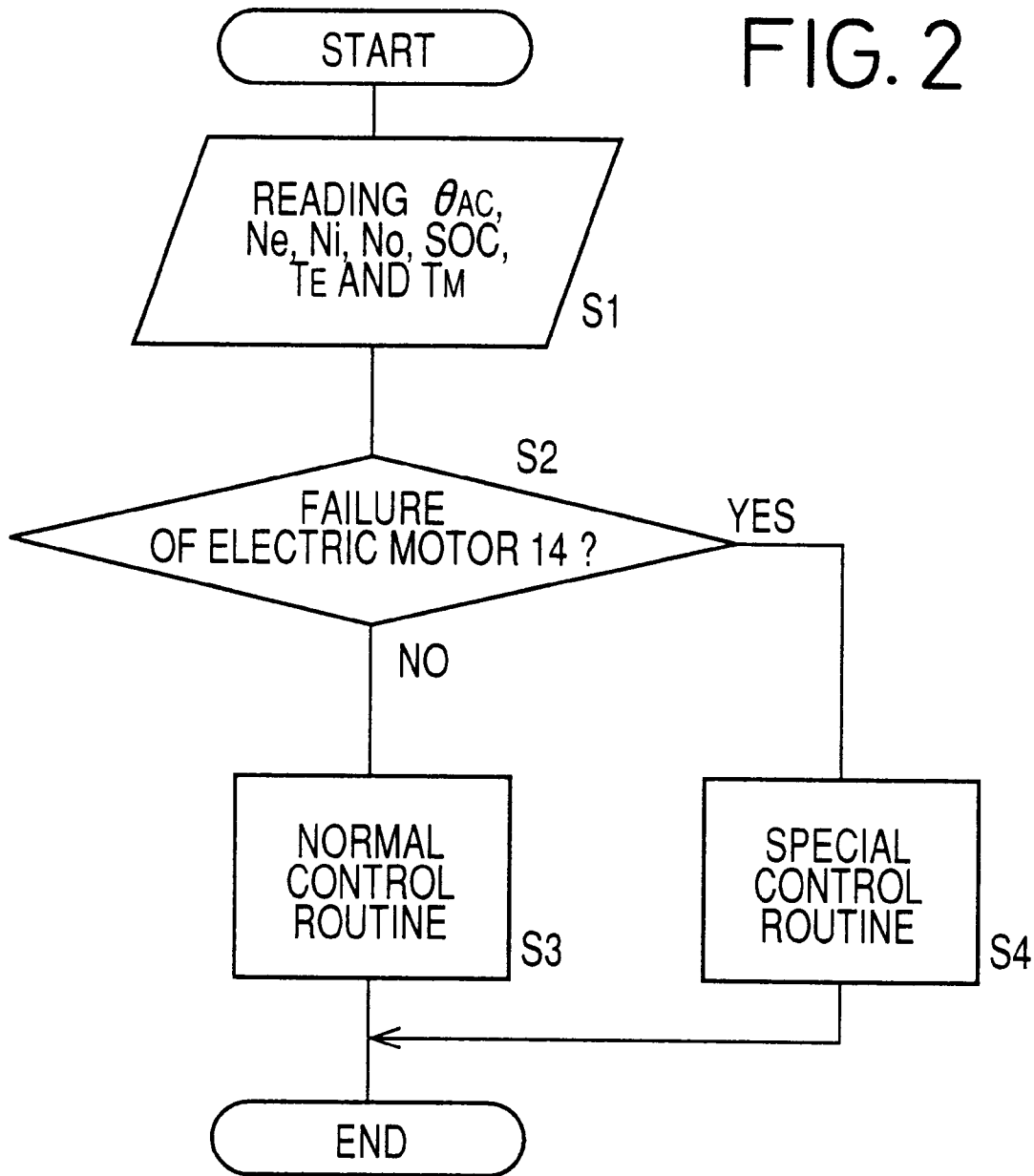
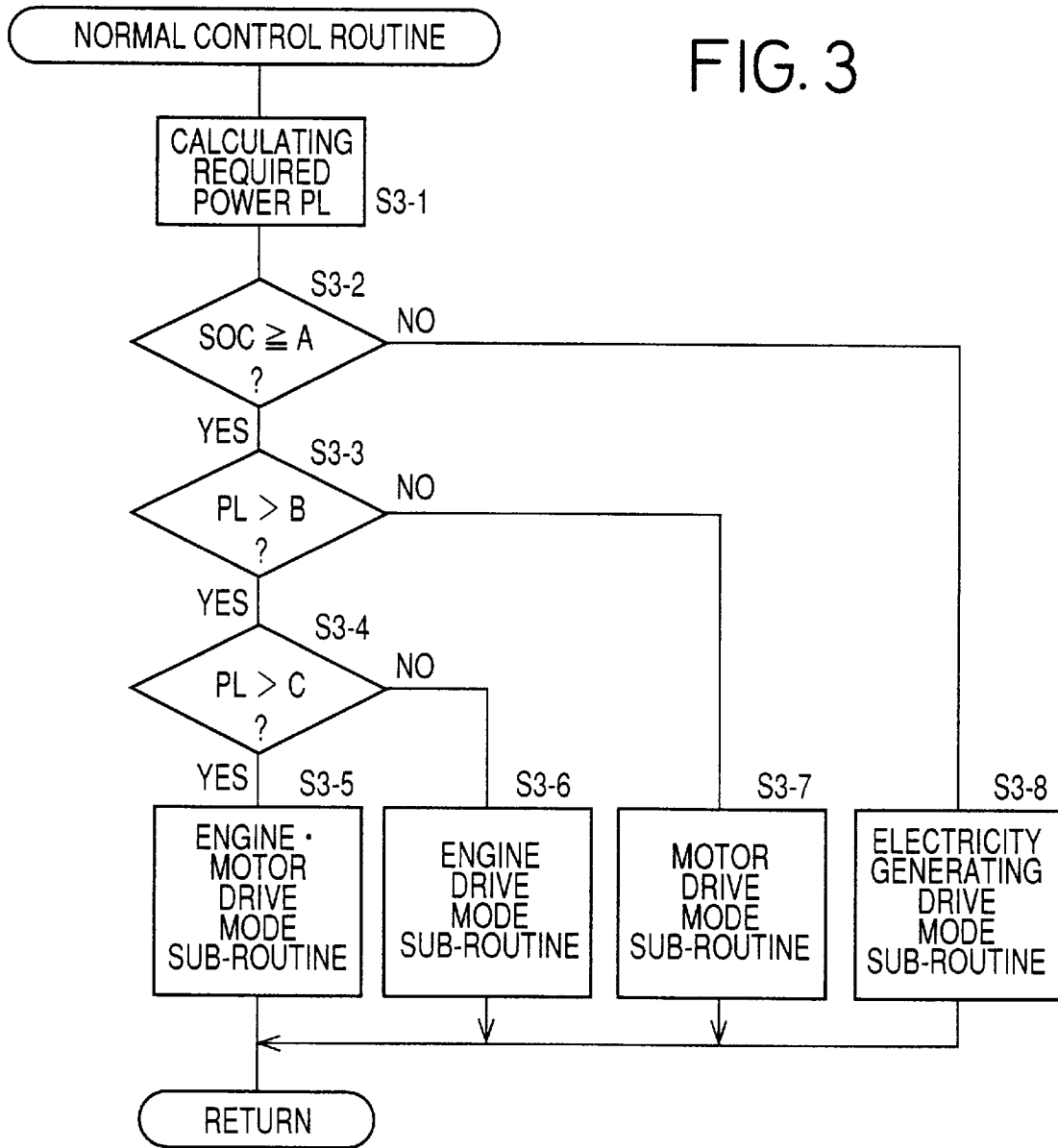


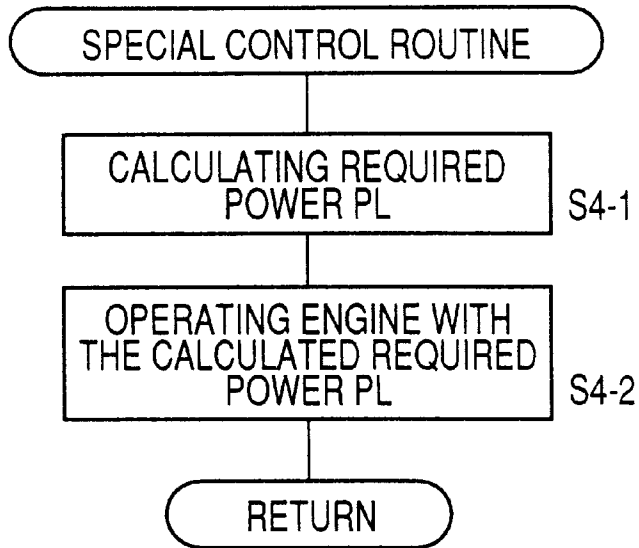
FIG. 1

FIG. 2

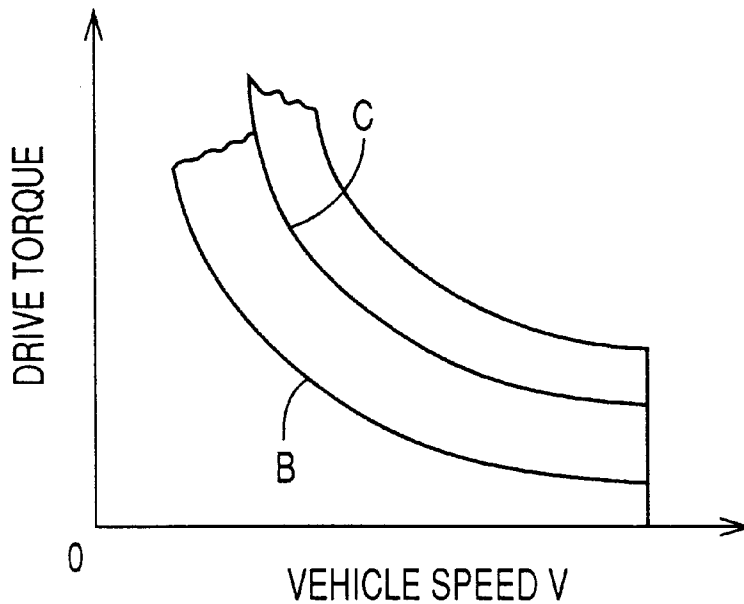




# FIG. 4



# FIG. 5



# Explore Litigation Insights

Docket Alarm provides insights to develop a more informed litigation strategy and the peace of mind of knowing you're on top of things.

## Real-Time Litigation Alerts



Keep your litigation team up-to-date with **real-time alerts** and advanced team management tools built for the enterprise, all while greatly reducing PACER spend.

Our comprehensive service means we can handle Federal, State, and Administrative courts across the country.

## Advanced Docket Research



With over 230 million records, Docket Alarm's cloud-native docket research platform finds what other services can't. Coverage includes Federal, State, plus PTAB, TTAB, ITC and NLRB decisions, all in one place.

Identify arguments that have been successful in the past with full text, pinpoint searching. Link to case law cited within any court document via Fastcase.

## Analytics At Your Fingertips



Learn what happened the last time a particular judge, opposing counsel or company faced cases similar to yours.

Advanced out-of-the-box PTAB and TTAB analytics are always at your fingertips.

## API

Docket Alarm offers a powerful API (application programming interface) to developers that want to integrate case filings into their apps.

## LAW FIRMS

Build custom dashboards for your attorneys and clients with live data direct from the court.

Automate many repetitive legal tasks like conflict checks, document management, and marketing.

## FINANCIAL INSTITUTIONS

Litigation and bankruptcy checks for companies and debtors.

## E-DISCOVERY AND LEGAL VENDORS

Sync your system to PACER to automate legal marketing.