



[54] HYBRID VEHICLE DRIVE SYSTEM HAVING TWO MOTOR/GENERATOR UNITS AND ENGINE STARTING MEANS

5,558,173 9/1996 Sherman 180/65.4
5,558,175 9/1996 Sherman 180/65.2
5,562,566 10/1996 Yang 180/65.2
5,713,425 2/1998 Buschhaus et al. 180/65.2

[75] Inventors: Takeharu Koide, Toyota; Hideaki Matsui, Aichi-ken; Mitsuhiro Nada, Toyota, all of Japan

FOREIGN PATENT DOCUMENTS

0-528-412-A1 2/1993 European Pat. Off. .
A-0-552-140 7/1993 European Pat. Off. .
31-40-492-A1 6/1982 Germany .
A-50-30223 3/1975 Japan .
A-3-273933 12/1991 Japan .
A-5-319110 12/1993 Japan .
A-7-172196 7/1995 Japan .

[73] Assignee: Toyota Jidosha Kabushiki Kaisha, Toyota-shi, Japan

[21] Appl. No.: 08/730,762

Primary Examiner—J. J. Swann
Assistant Examiner—Frank Vanaman
Attorney, Agent, or Firm—Oliff & Berridge, PLC

[22] Filed: Oct. 15, 1996

[30] Foreign Application Priority Data

Oct. 18, 1995 [JP] Japan 7-268922
Sep. 5, 1996 [JP] Japan 8-235063

[57] ABSTRACT

[51] Int. Cl.⁶ B60K 6/04

[52] U.S. Cl. 180/65.2

[58] Field of Search 180/65.2, 65.3, 180/65.4, 65.6; 123/3

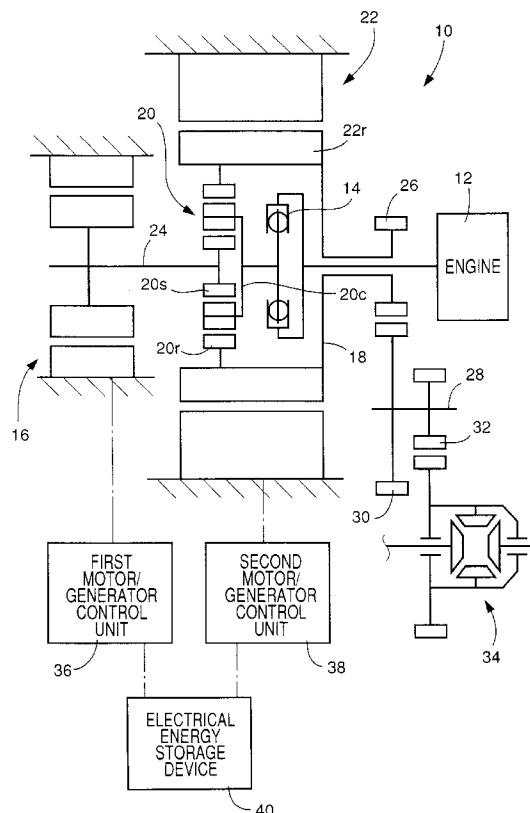
A hybrid drive system for a motor vehicle, including an engine operated by combustion of a fuel, a first motor/generator, a distributing mechanism for mechanically distributing an output of the engine to the first motor/generator and an output member, a second motor/generator whose rotary force is transferred to a power transmitting path between the output member and a drive wheel of the motor vehicle, and wherein an engine starting device is provided for operating the first motor/generator to crank the engine through the distributing mechanism, for thereby starting the engine.

[56] References Cited

U.S. PATENT DOCUMENTS

4,095,664 6/1978 Bray 180/65.4
4,319,140 3/1982 Paschke 290/45
4,335,429 6/1982 Kawakatsu 180/65.2
4,407,132 10/1983 Kawakatsu et al. 180/65.4
5,343,970 9/1994 Severinsky 180/65.6
5,492,189 2/1996 Kriegler et al. 180/65.2

7 Claims, 16 Drawing Sheets



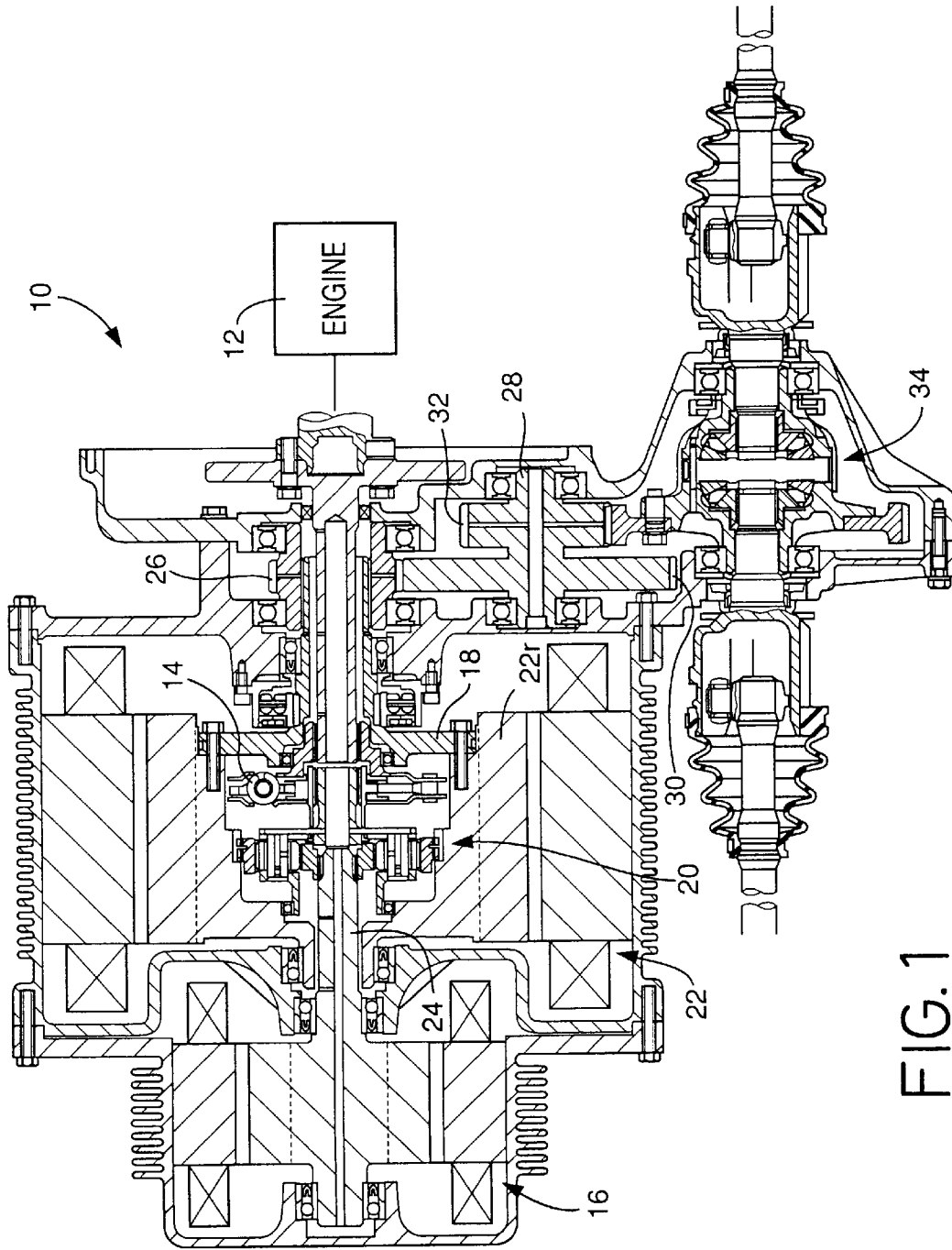
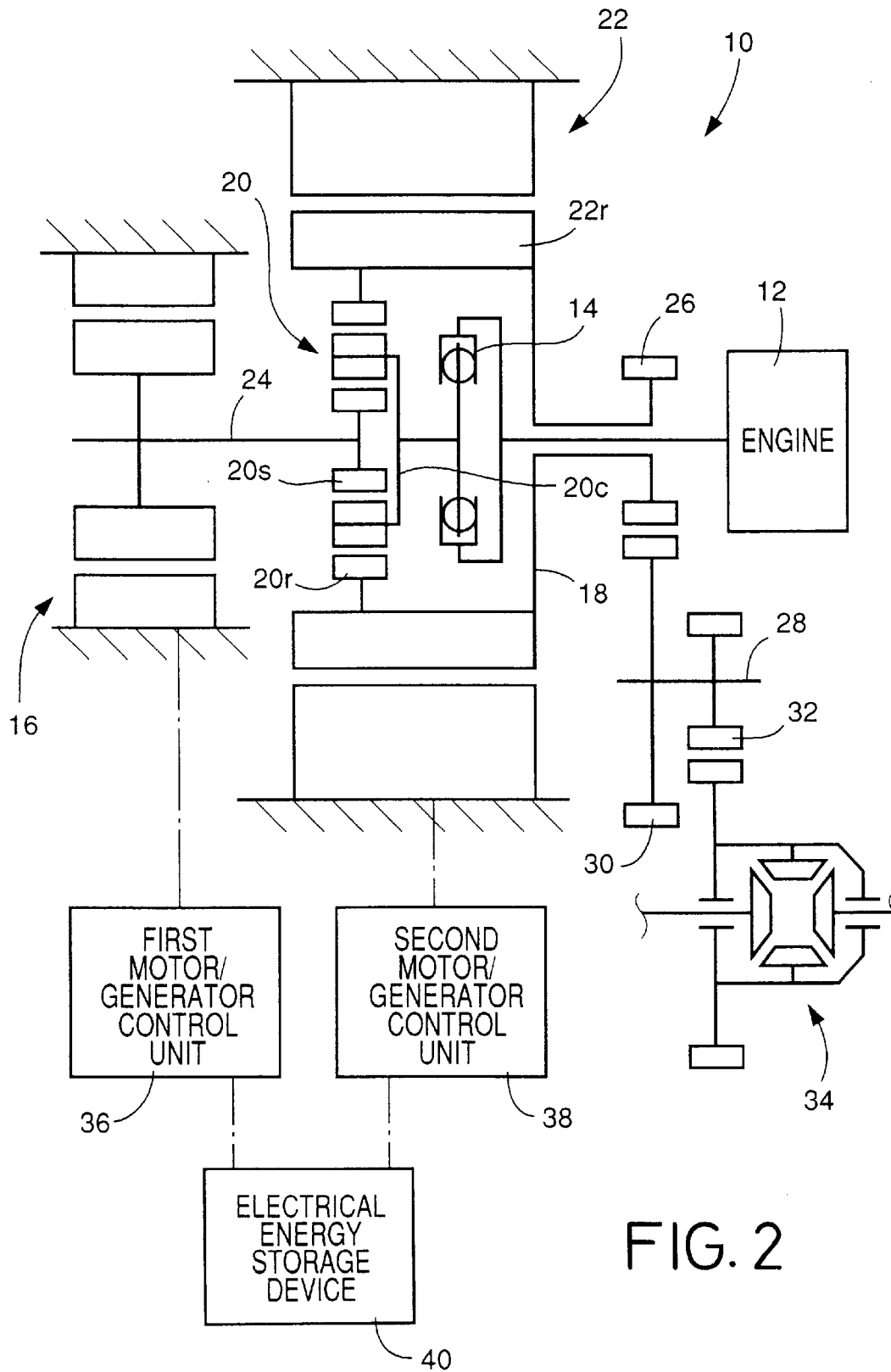


FIG. 1



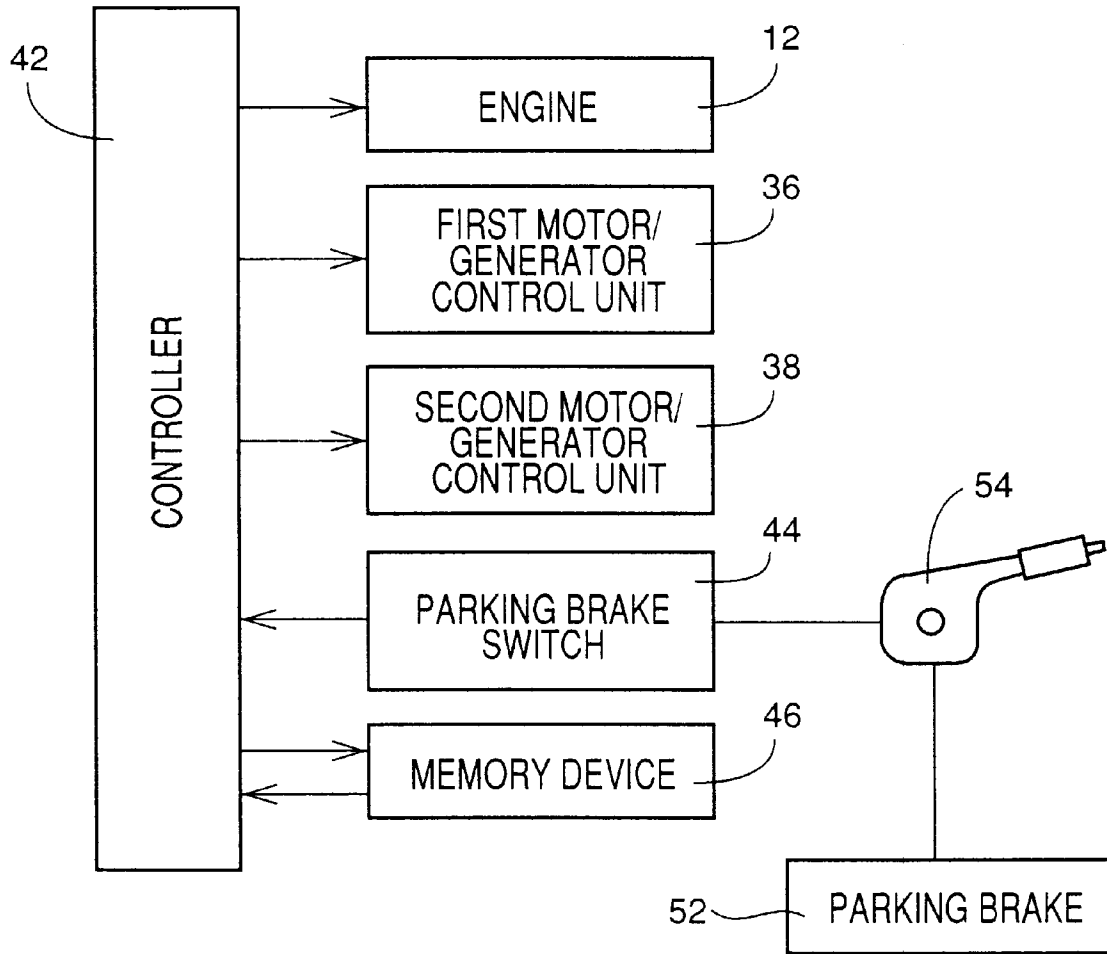
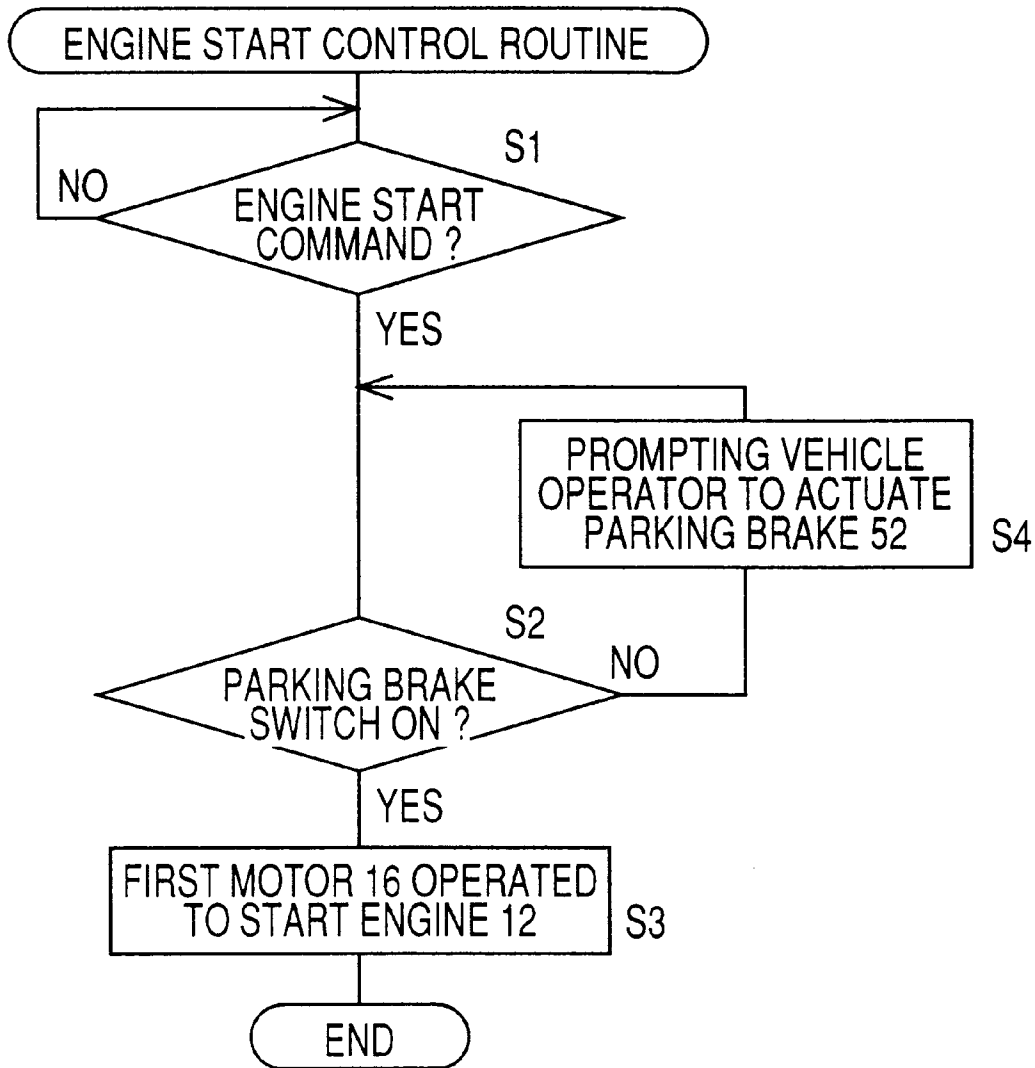


FIG. 3

FIG. 4



Explore Litigation Insights

Docket Alarm provides insights to develop a more informed litigation strategy and the peace of mind of knowing you're on top of things.

Real-Time Litigation Alerts



Keep your litigation team up-to-date with **real-time alerts** and advanced team management tools built for the enterprise, all while greatly reducing PACER spend.

Our comprehensive service means we can handle Federal, State, and Administrative courts across the country.

Advanced Docket Research



With over 230 million records, Docket Alarm's cloud-native docket research platform finds what other services can't. Coverage includes Federal, State, plus PTAB, TTAB, ITC and NLRB decisions, all in one place.

Identify arguments that have been successful in the past with full text, pinpoint searching. Link to case law cited within any court document via Fastcase.

Analytics At Your Fingertips



Learn what happened the last time a particular judge, opposing counsel or company faced cases similar to yours.

Advanced out-of-the-box PTAB and TTAB analytics are always at your fingertips.

API

Docket Alarm offers a powerful API (application programming interface) to developers that want to integrate case filings into their apps.

LAW FIRMS

Build custom dashboards for your attorneys and clients with live data direct from the court.

Automate many repetitive legal tasks like conflict checks, document management, and marketing.

FINANCIAL INSTITUTIONS

Litigation and bankruptcy checks for companies and debtors.

E-DISCOVERY AND LEGAL VENDORS

Sync your system to PACER to automate legal marketing.