



US007626349B2

(12) **United States Patent**  
**Marcinkiewicz et al.**

(10) **Patent No.:** **US 7,626,349 B2**  
(45) **Date of Patent:** **Dec. 1, 2009**

(54) **LOW NOISE HEATING, VENTILATING AND/OR AIR CONDITIONING (HVAC) SYSTEMS**

(75) Inventors: **Joseph G. Marcinkiewicz**, St. Peters, MO (US); **Arthur E. Woodard**, Manchester, MO (US); **Prakash B. Shahi**, St. Louis, MO (US); **Mark E. Carrier**, Wildwood, MO (US); **Michael I. Henderson**, North Yorkshire (GB)

(73) Assignee: **Emerson Electric Co.**, St. Louis, MO (US)

(\*) Notice: Subject to any disclaimer, the term of this patent is extended or adjusted under 35 U.S.C. 154(b) by 300 days.

(21) Appl. No.: **11/701,350**

(22) Filed: **Feb. 1, 2007**

(65) **Prior Publication Data**

US 2008/0185986 A1 Aug. 7, 2008

(51) **Int. Cl.**  
**H02P 21/00** (2006.01)

(52) **U.S. Cl.** ..... **318/400.02**; 318/400.32; 318/599

(58) **Field of Classification Search** ..... 318/400.02, 318/400.32, 400.34, 459, 500, 432, 599  
See application file for complete search history.

(56) **References Cited**

U.S. PATENT DOCUMENTS

5,410,230 A \* 4/1995 Bessler et al. .... 318/471

5,426,354	A *	6/1995	Bausch	.....	318/400.04
5,448,141	A *	9/1995	Kelley et al.	.....	318/400.35
5,969,498	A *	10/1999	Cooke	.....	318/799
6,326,750	B1	12/2001	Marcinkiewicz		
6,756,757	B2	6/2004	Marcinkiewicz et al.		
7,208,895	B2	4/2007	Marcinkiewicz et al.		
2006/0290302	A1	12/2006	Marcinkiewicz et al.		

OTHER PUBLICATIONS

“Closed-Loop Vector Torque Control,” [www.worldservo.com/html/features/vector.htm](http://www.worldservo.com/html/features/vector.htm); [retrieved on Nov. 22, 2006]; pp. 1-3.

“Sinewave Commutation,” [www.worldservo.com/html/features/sine.htm](http://www.worldservo.com/html/features/sine.htm); [retrieved on Nov. 22, 2006]; pp. 1-3.

\* cited by examiner

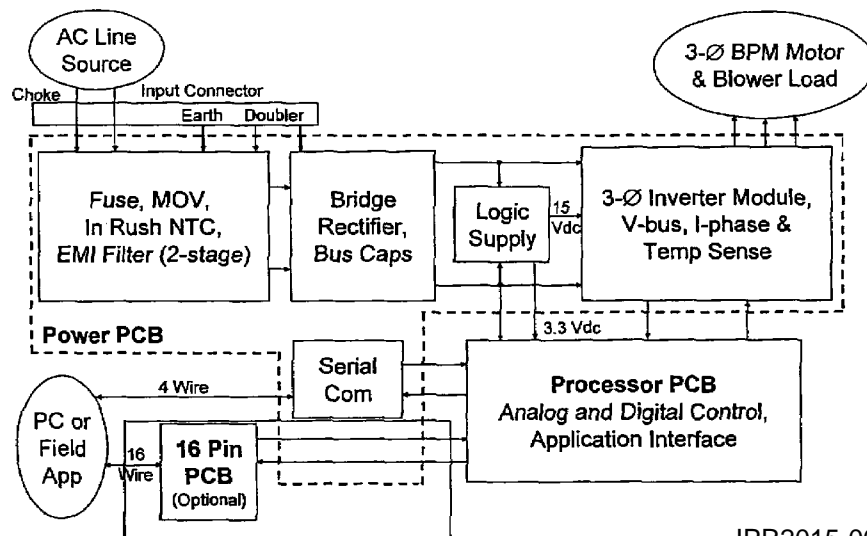
*Primary Examiner*—Rina I Duda

(74) *Attorney, Agent, or Firm*—Harness, Dickey & Pierce, P.L.C.

(57) **ABSTRACT**

A heating, ventilating and/or air conditioning (HVAC) system includes a system controller, a motor controller, an air-moving component, and a permanent magnet motor having a stationary assembly, a rotatable assembly in magnetic coupling relation to the stationary assembly, and a shaft coupled to the air-moving component. The motor controller is configured for performing sinewave commutation in response to one or more control signals received from the system controller to produce continuous phase currents in the permanent magnet motor for driving the air-moving component. By using sinewave commutation (in contrast to square wave commutation), the noise and vibration produced by the HVAC system is markedly reduced.

**20 Claims, 4 Drawing Sheets**



IPR2015-00762 - EXHIBIT 1001

Zhejiang Broad Ocean Motor Co., Ltd., Petitioner

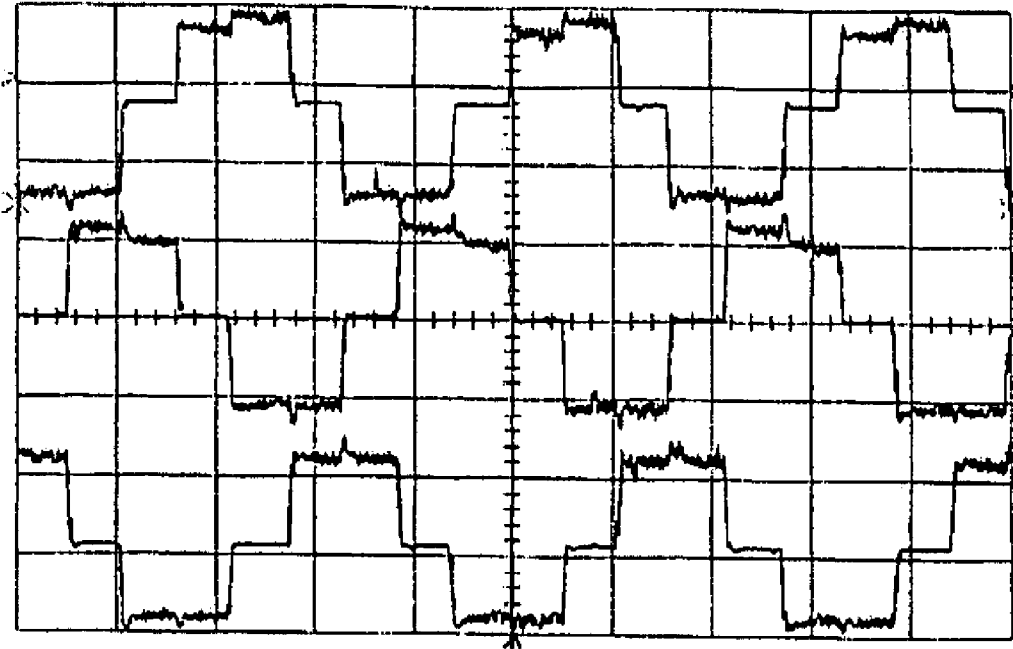


Figure 1  
(Prior Art)

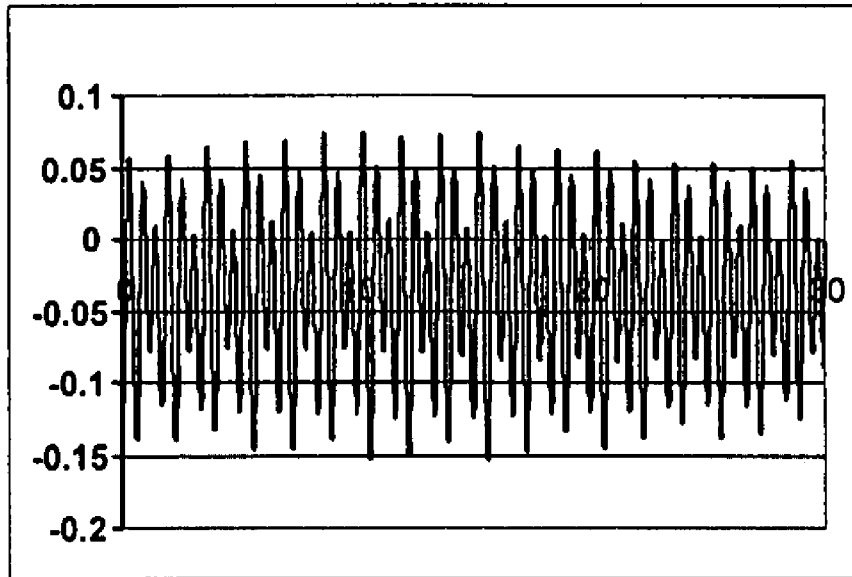


Figure 2  
(Prior Art)

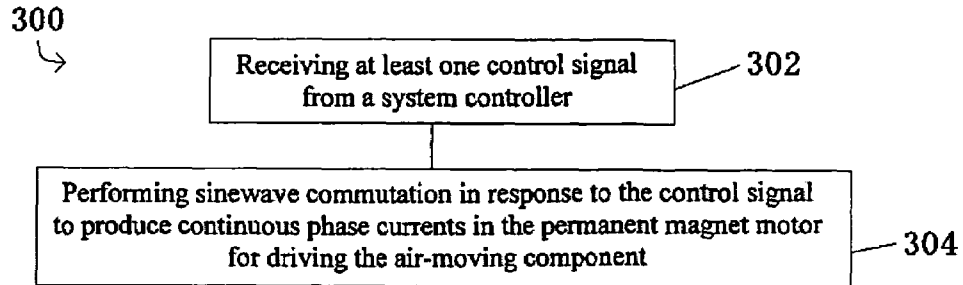


Figure 3

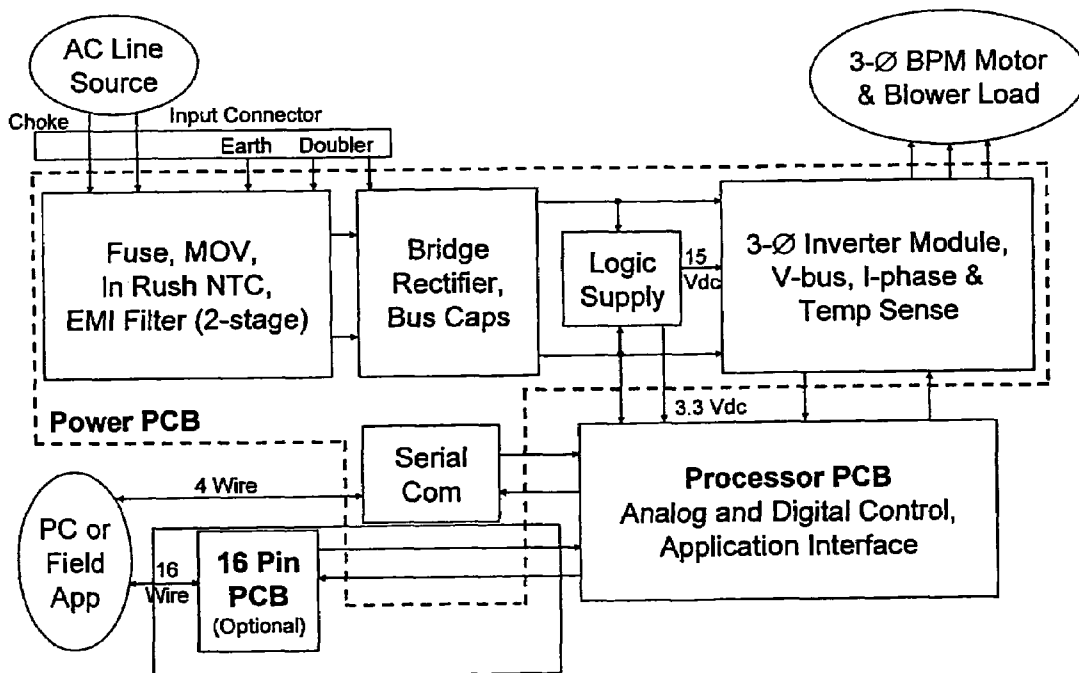


Figure 7

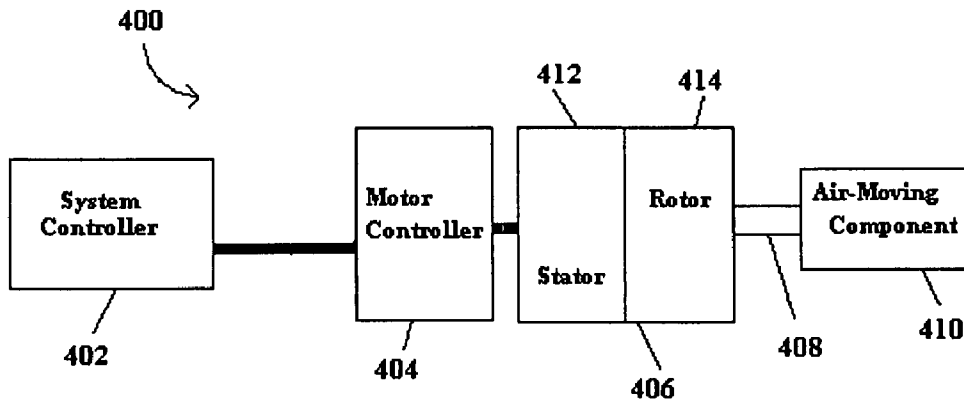


Figure 4

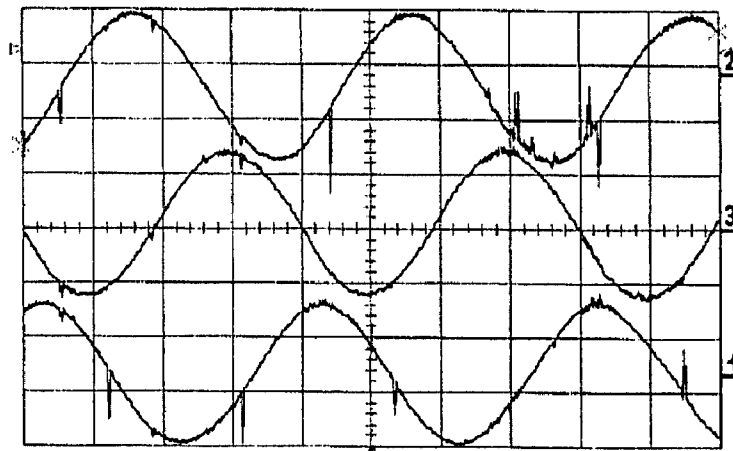


Figure 5

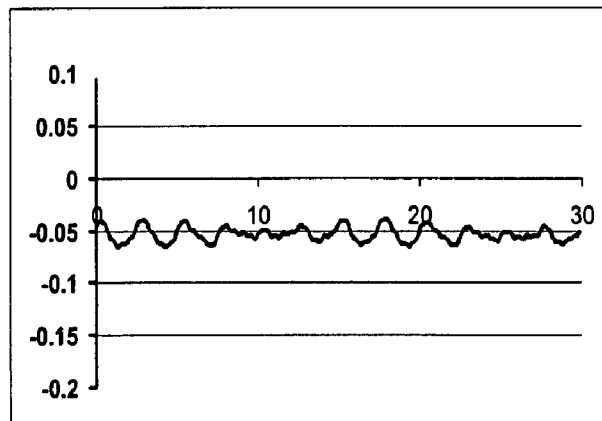


Figure 6

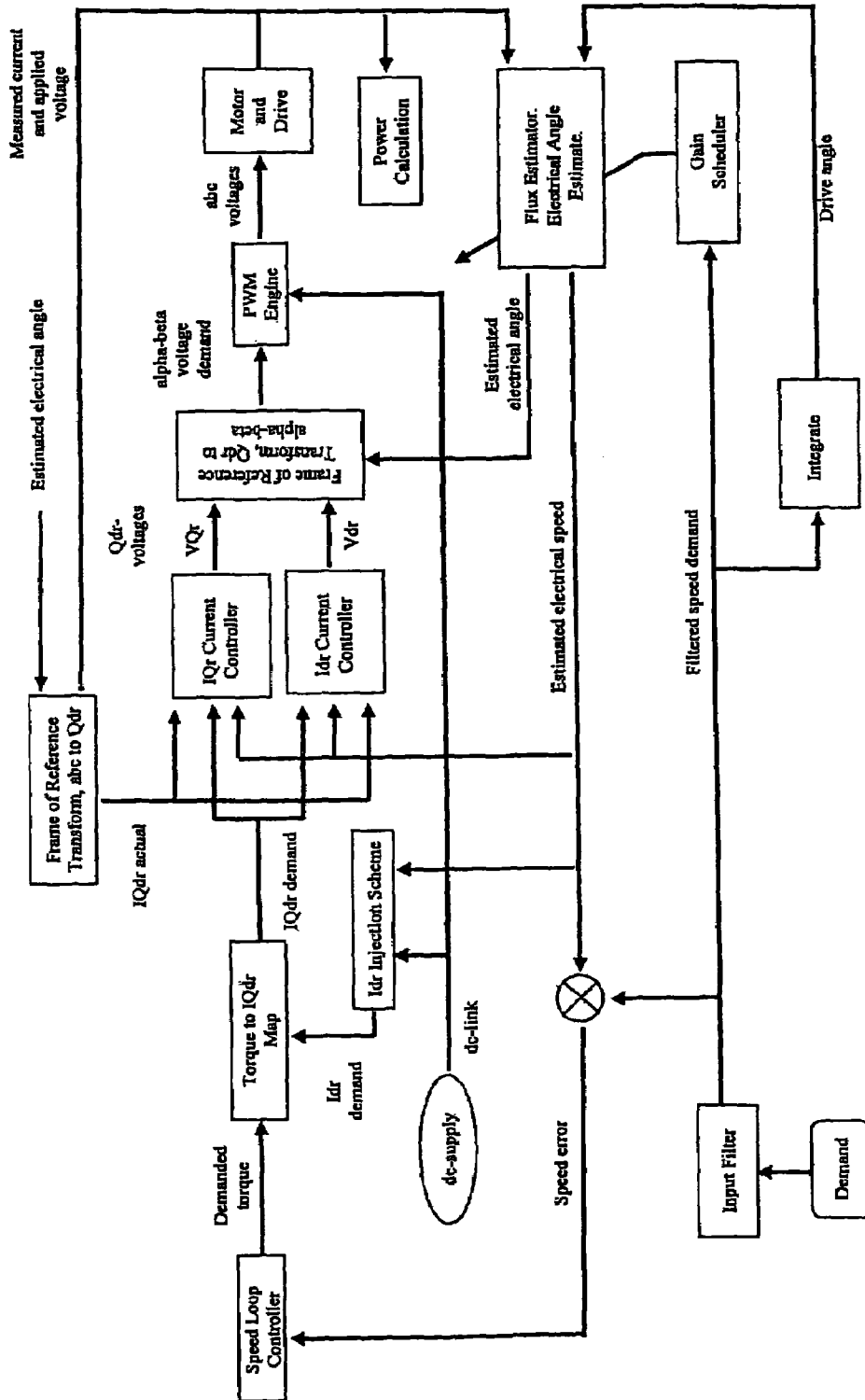


Figure 8

# Explore Litigation Insights

Docket Alarm provides insights to develop a more informed litigation strategy and the peace of mind of knowing you're on top of things.

## Real-Time Litigation Alerts



Keep your litigation team up-to-date with **real-time alerts** and advanced team management tools built for the enterprise, all while greatly reducing PACER spend.

Our comprehensive service means we can handle Federal, State, and Administrative courts across the country.

## Advanced Docket Research



With over 230 million records, Docket Alarm's cloud-native docket research platform finds what other services can't. Coverage includes Federal, State, plus PTAB, TTAB, ITC and NLRB decisions, all in one place.

Identify arguments that have been successful in the past with full text, pinpoint searching. Link to case law cited within any court document via Fastcase.

## Analytics At Your Fingertips



Learn what happened the last time a particular judge, opposing counsel or company faced cases similar to yours.

Advanced out-of-the-box PTAB and TTAB analytics are always at your fingertips.

## API

Docket Alarm offers a powerful API (application programming interface) to developers that want to integrate case filings into their apps.

## LAW FIRMS

Build custom dashboards for your attorneys and clients with live data direct from the court.

Automate many repetitive legal tasks like conflict checks, document management, and marketing.

## FINANCIAL INSTITUTIONS

Litigation and bankruptcy checks for companies and debtors.

## E-DISCOVERY AND LEGAL VENDORS

Sync your system to PACER to automate legal marketing.