



[54] **CUSTOMIZATION OF WEB PAGES BASED ON REQUESTER TYPE**

[75] Inventor: **Maria Azua Himmel**, Austin, Tex.

[73] Assignee: **International Business Machines Corporation**, Armonk, N.Y.

[21] Appl. No.: **08/976,405**

[22] Filed: **Nov. 21, 1997**

[51] **Int. Cl.**<sup>7</sup> ..... **G06F 15/16**

[52] **U.S. Cl.** ..... **709/217; 709/246; 709/219; 707/104**

[58] **Field of Search** ..... **709/217, 203, 709/219, 206, 246; 707/104, 205, 100, 101, 103**

[56] **References Cited**

**U.S. PATENT DOCUMENTS**

5,442,749	8/1995	Northcutt et al.	709/219
5,727,159	3/1998	Kikinis	709/246
5,794,039	11/1998	Guck	707/103
5,802,292	9/1998	Mogul	709/219
5,848,415	12/1998	Guck	707/103
5,864,870	1/1999	Guck	707/104
5,911,776	6/1999	Guck	709/217
5,918,013	6/1999	Mighdoll et al.	709/217

**FOREIGN PATENT DOCUMENTS**

0851367A1 1/1998 European Pat. Off. .  
10-133973 5/1998 Japan .

**OTHER PUBLICATIONS**

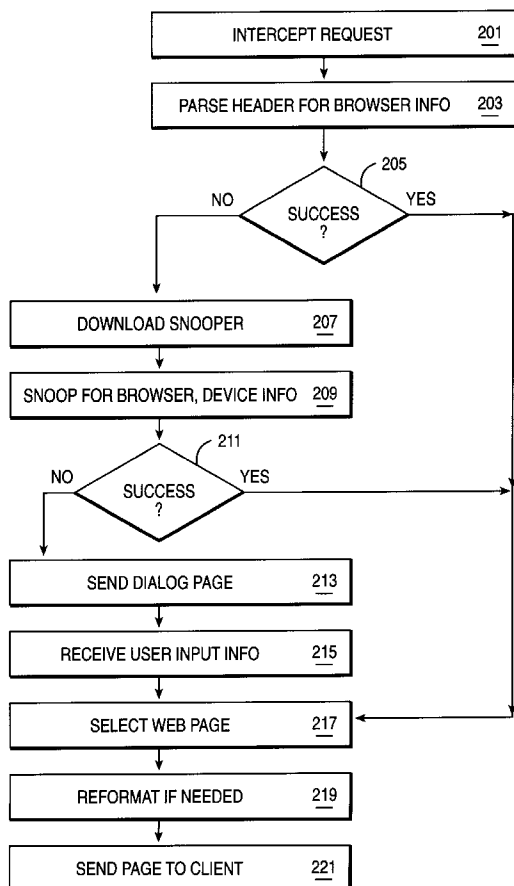
Digestor: Device-Independent Access To The World Wide Web, Timothy W. Bickmore and Bill N. Schilit. pp. 1-8, 1997.

*Primary Examiner*—Glenton B. Burgess  
*Assistant Examiner*—Chuong Ho  
*Attorney, Agent, or Firm*—Jeffrey S. LaBaw

[57] **ABSTRACT**

Customized Internet content is provided to a requesting client device using an intercepting agent based on the capabilities of the requesting client. The agent, typically at the web server to which the client request is directed intercepts a request made by a requesting client device for a file from a web server. The agent detects client device capability information about the requesting client device, such as display or memory capabilities. The client request is redirected to a Uniform Resource Locator (URL) according to the detected client device capability information to retrieve a version of the requested file.

**25 Claims, 5 Drawing Sheets**



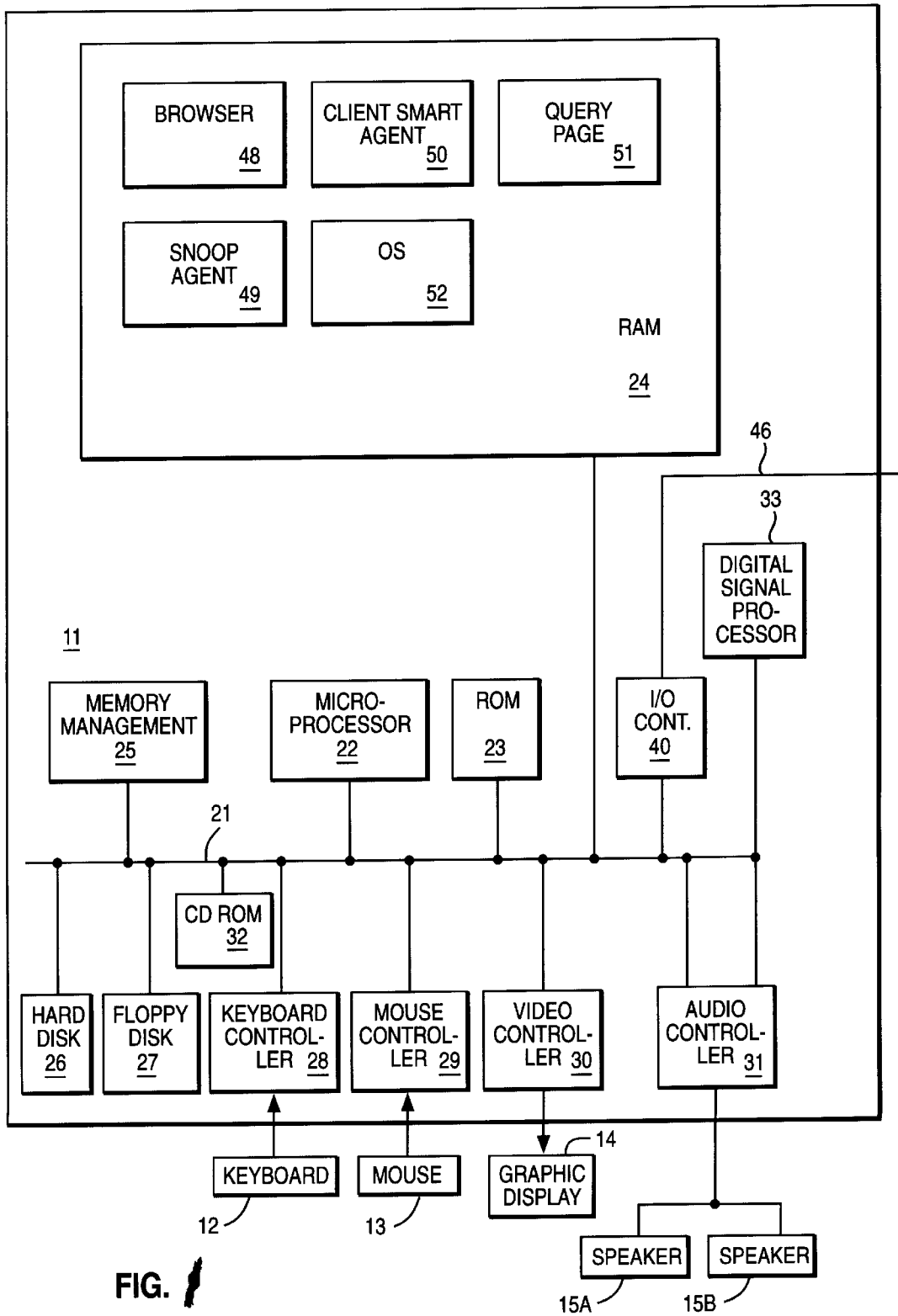


FIG. 1

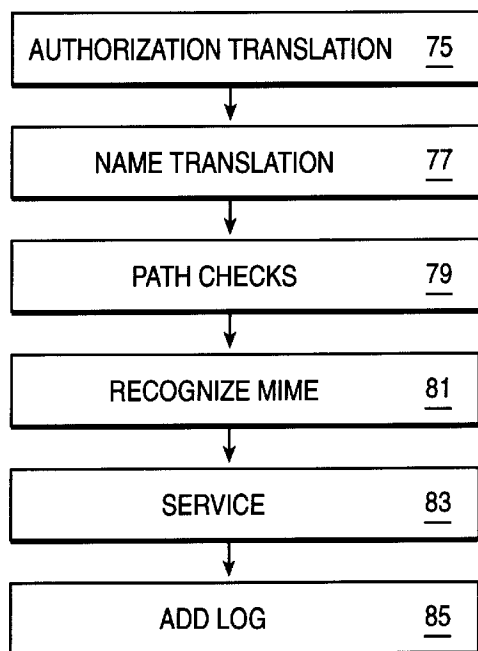


FIG. 2

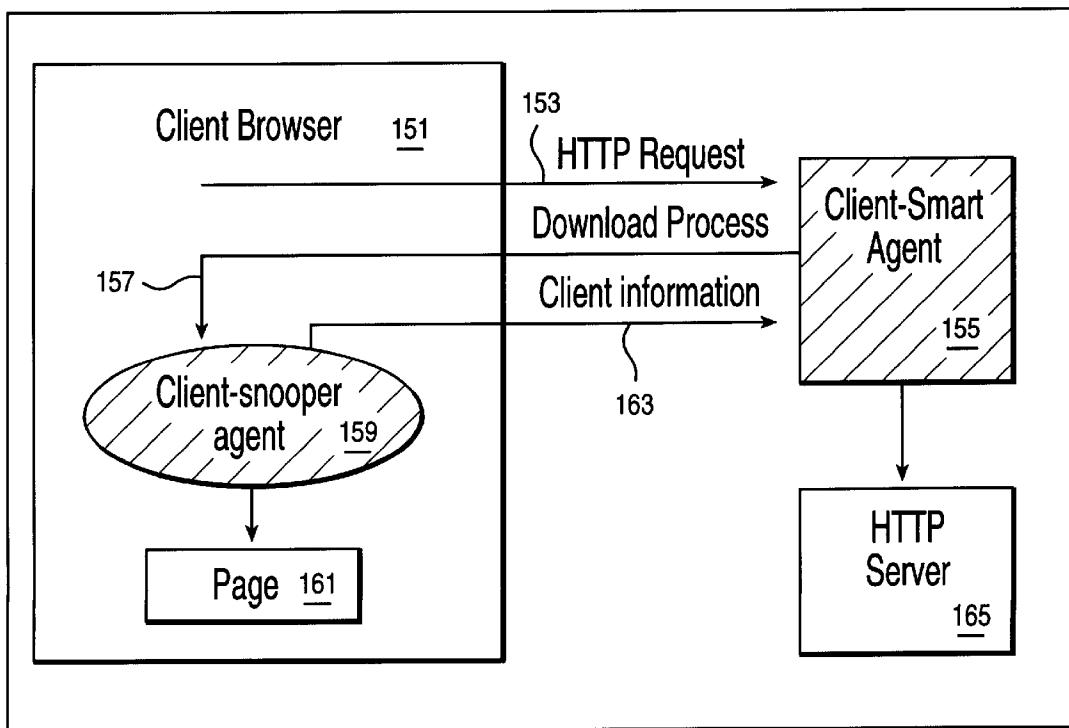


FIG. 4

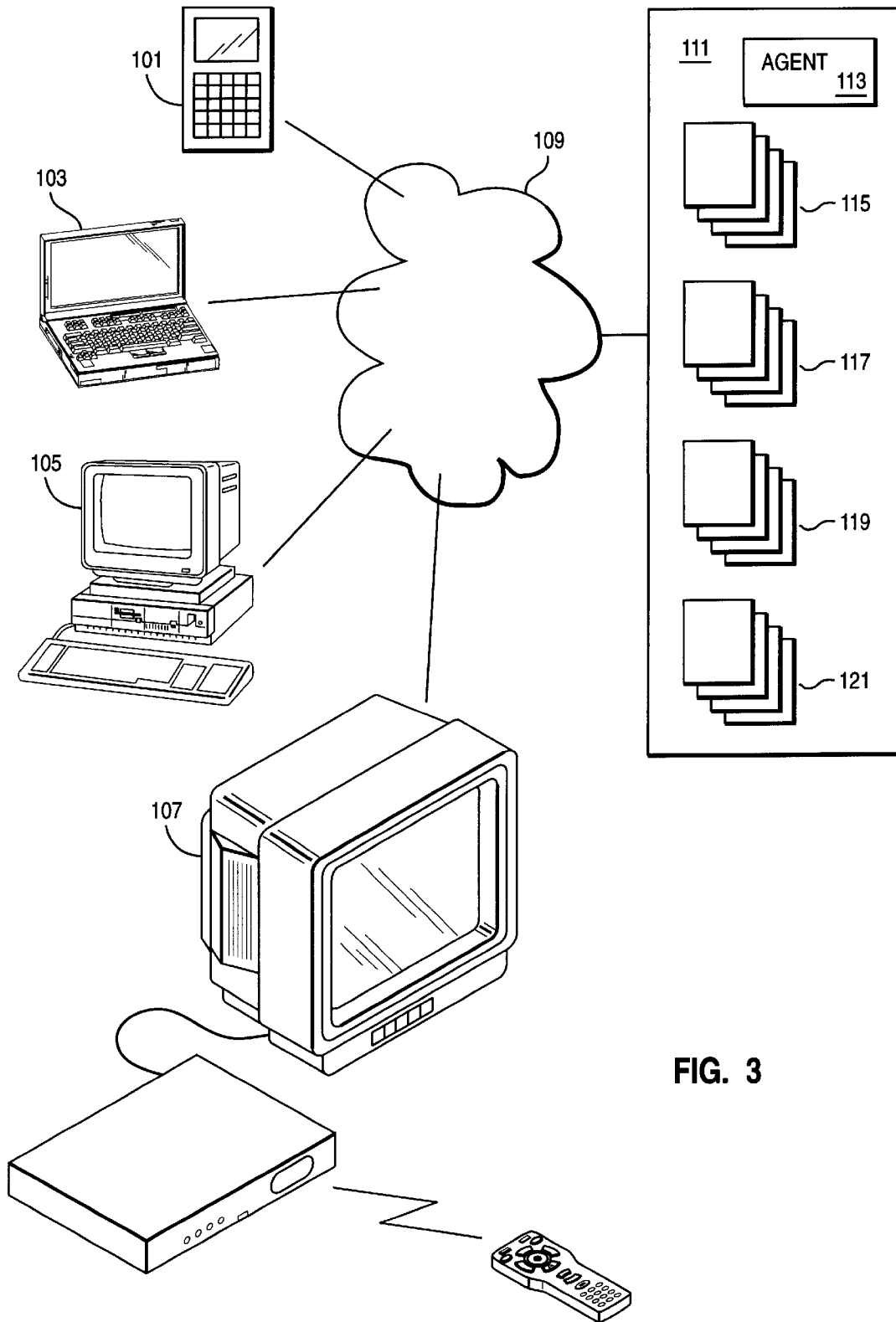


FIG. 3

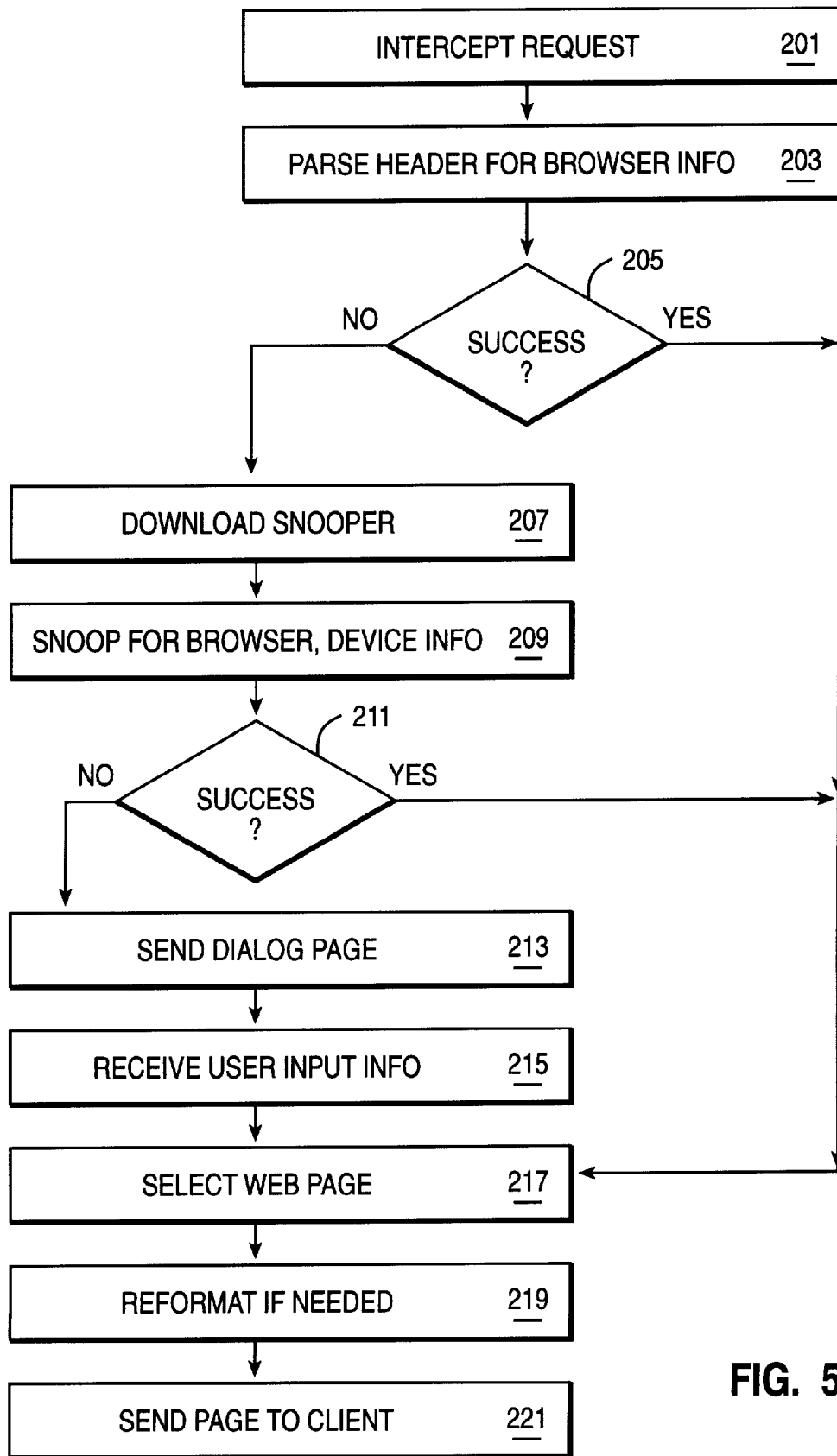


FIG. 5

# Explore Litigation Insights

Docket Alarm provides insights to develop a more informed litigation strategy and the peace of mind of knowing you're on top of things.

## Real-Time Litigation Alerts



Keep your litigation team up-to-date with **real-time alerts** and advanced team management tools built for the enterprise, all while greatly reducing PACER spend.

Our comprehensive service means we can handle Federal, State, and Administrative courts across the country.

## Advanced Docket Research



With over 230 million records, Docket Alarm's cloud-native docket research platform finds what other services can't. Coverage includes Federal, State, plus PTAB, TTAB, ITC and NLRB decisions, all in one place.

Identify arguments that have been successful in the past with full text, pinpoint searching. Link to case law cited within any court document via Fastcase.

## Analytics At Your Fingertips



Learn what happened the last time a particular judge, opposing counsel or company faced cases similar to yours.

Advanced out-of-the-box PTAB and TTAB analytics are always at your fingertips.

## API

Docket Alarm offers a powerful API (application programming interface) to developers that want to integrate case filings into their apps.

## LAW FIRMS

Build custom dashboards for your attorneys and clients with live data direct from the court.

Automate many repetitive legal tasks like conflict checks, document management, and marketing.

## FINANCIAL INSTITUTIONS

Litigation and bankruptcy checks for companies and debtors.

## E-DISCOVERY AND LEGAL VENDORS

Sync your system to PACER to automate legal marketing.