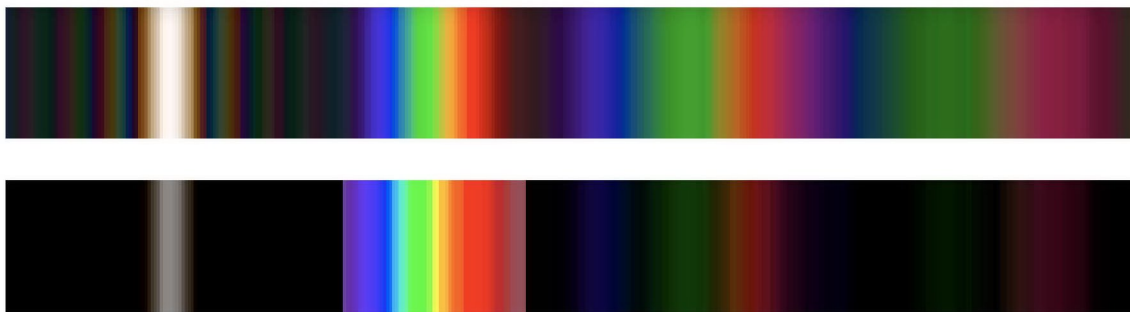


blazes

The fact that diffraction gratings produce multiple spectra, or orders, each with a different dispersion, makes them very versatile but also very inefficient. Most of the light is directed to the zeroth order, which is undispersed and hence useless for spectroscopy. Only $\sim 10\%$ of the light is directed to the first order, which is the most commonly used order in astronomical spectrographs. Some means of directing all of the light into the order of interest would therefore be highly desirable, as illustrated in [figure 96](#).

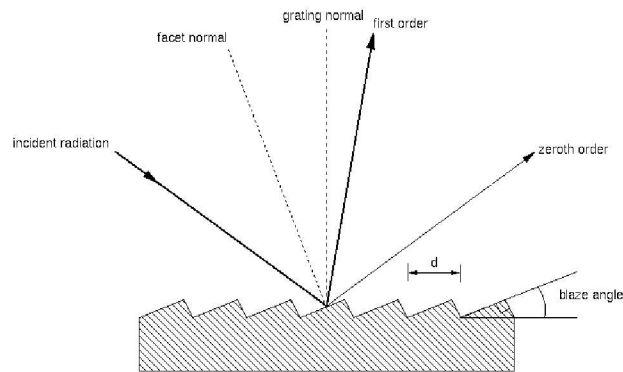
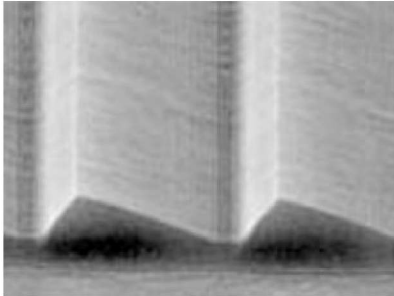
figure 96: Top: the diffraction pattern produced by a white light source incident on an unblazed (top) and blazed (bottom) diffraction grating, where only the orders $n = 0, +1, +2, +3$ are shown. Note how the spectra get fainter as the order increases in the unblazed case, and how most of the light is directed into the order of interest ($n = +1$) in the blazed case.



The solution is to employ the fact that gratings are most efficient when the rays emerge from the grating as if by direct reflection. By creating tilted facets, or a *blaze*, in the grating, as shown in [figure 97](#), it is possible to direct the majority of the light ($\sim 70\%$) into the order of interest.

figure 97: Left: a microscopic view of the tilted facets in a typical blazed diffraction grating. Right: an illustration of the saw-tooth profile of a blazed reflection grating. The tilt of the facet ensures that

most of the light is diffracted to the first order rather than the zeroth order.



Having covered [gratings](#), [dispersion](#), [resolution](#) and [blaze](#), you should now be able to understand a typical table from a spectrograph user manual, such as that shown in [table 3](#). The first column gives the grating name, where "R" refers to a diamond ruled grating, "H" to a holographic-etched grating, "1200" (for example) to the number of grooves per mm and "B" to the fact that the grating is optimised for blue light. The second column gives the blaze wavelength of the grating in \AA , i.e. the wavelength of peak grating efficiency. The third and fourth columns give the dispersion of the grating in units of $\text{\AA}/\text{mm}$ and $\text{\AA}/\text{pixel}$, where each detector pixel is $13.5 \mu\text{m}$ in size. The fifth column gives the wavelength range of the resulting spectrum, obtained by multiplying the dispersion in $\text{\AA}/\text{pixel}$ by the number of CCD pixels in the dispersion direction (4096). Only 3500 of these 4096 pixels are usable, so the sixth column lists the usable wavelength range. The final two columns list the slit widths in arcseconds that must be used to obtain a projected slit width at the detector of $54 \mu\text{m}$ (i.e. 4 pixels) and $27 \mu\text{m}$ (i.e. 2 pixels). The latter case corresponds to sampling at the Nyquist critical frequency, and the spectral resolution is then given by twice the dispersion. Using a slit which projects to less than 2 pixels will not improve the spectral resolution, as the slit will then be undersampled by the CCD pixels. The $54 \mu\text{m}$ projected slit width is well matched to the typical seeing on La Palma, resulting in good throughput but oversampling by the CCD pixels; the spectral resolution in this case will then be defined by the slit, not by the pixels.

table 3: Details of the gratings available in the blue arm of the [ISIS spectrograph](#) on the 4.2 m William Herschel Telescope on La Palma.

ISIS wavelength coverage and resolution with EEV12							
Grating	Blaze	Dispersion (Å/mm)	Dispersion (Å/pix)	Total Spectral range (Å)	Unvignetted range (3500 pixels)	Slit- width for 54 mu at detector (in arcsecs)	Slit- width for 27 mu at detector (in arcsecs)
R158B	3600	120	1.62	6635	5670	0.8	0.4
R300B	4000	64	0.86	3539	3024	0.8	0.4
R600B	3900	33	0.45	1825	1560	0.9	0.45
R1200B	4000	17	0.23	940	803	1.1	0.55
H2400B	Holo	8	0.11	442	378	1.2	0.6

grisms

removed from course

©Vik Dhillon, 18th September 2012