



US007027411B1

(12) **United States Patent**
Pulsipher et al.

(10) **Patent No.:** **US 7,027,411 B1**
(45) **Date of Patent:** **Apr. 11, 2006**

(54) **METHOD AND SYSTEM FOR IDENTIFYING AND PROCESSING CHANGES TO A NETWORK TOPOLOGY**

6,405,248 B1 * 6/2002 Wood 709/223
6,636,981 B1 * 10/2003 Barnett et al. 714/4
6,791,948 B1 * 9/2004 Desnoyers et al. 370/254
6,885,644 B1 * 4/2005 Knop et al. 370/254

(75) Inventors: **Eric A Pulsipher**, Ft Collins, CO (US);
Joseph R Hunt, Loveland, CO (US)

FOREIGN PATENT DOCUMENTS

EP 830047 A2 3/1998
JP 2000-76209 3/2000
WO WO98/44400 10/1998

(73) Assignee: **Hewlett-Packard Development Company, L.P.**, Houston, TX (US)

(*) Notice: Subject to any disclaimer, the term of this patent is extended or adjusted under 35 U.S.C. 154(b) by 961 days.

* cited by examiner

Primary Examiner—Wellington Chin
Assistant Examiner—Chuung Ho

(21) Appl. No.: **09/703,942**

(57) **ABSTRACT**

(22) Filed: **Oct. 31, 2000**

(51) **Int. Cl.**
H04L 12/28 (2006.01)

(52) **U.S. Cl.** **370/254**; 370/403; 370/402;
370/351; 714/717; 709/223; 709/224

(58) **Field of Classification Search** 370/229,
370/216, 217, 221, 225, 254, 255, 256, 257,
370/258, 410, 403, 402, 350, 400, 252, 351;
709/224, 223, 238; 714/717, 4; 340/825.52;
715/735

See application file for complete search history.

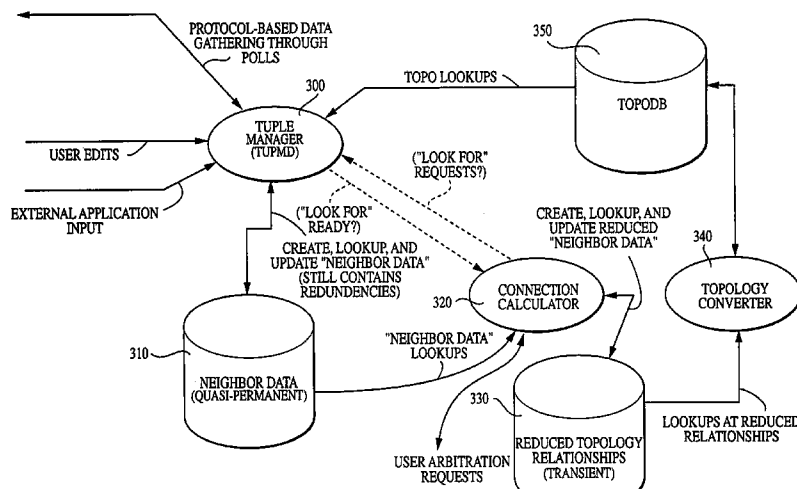
A method and system are disclosed for mapping the topology of a network having interconnected nodes by identifying changes in the network and updating a stored network topology based on the changes. The nodal connections are represented by data tuples that store information such as a host identifier, a connector interface, and a port specification for each connection. A topology database stores an existing topology of a network. A topology converter accesses the topology database and converts the existing topology into a list of current tuples. A connection calculator calculates tuples to represent connections in the new topology. The topology converter receives the new tuples, identifies changes to the topology, and updates the topology database using the new tuples. The topology converter identifies duplicate tuples that appear in both the new tuples and the existing tuples and marks the duplicate tuples to reflect that no change has occurred to these connections. The topology converter attempts to resolve swapped port conditions and searches for new singly-heard and multi-heard host link tuples in the list of existing tuples. The topology converter also searches for new conflict link tuples in the existing tuples. The topology converter updates the topology database with the new topology.

(56) **References Cited**

U.S. PATENT DOCUMENTS

4,644,532 A * 2/1987 George et al. 370/255
5,023,873 A * 6/1991 Stevenson et al. 714/4
5,727,157 A * 3/1998 Orr et al. 709/224
5,729,685 A * 3/1998 Chatwani et al. 709/224
5,732,086 A * 3/1998 Liang et al. 370/410
5,740,346 A * 4/1998 Wicki et al. 714/22
5,886,643 A 3/1999 Diebboll et al.
6,108,702 A * 8/2000 Wood 709/224
6,160,796 A * 12/2000 Zou 370/257
6,295,541 B1 * 9/2001 Bodnar et al. 707/203
6,347,336 B1 * 2/2002 Song et al. 709/223

18 Claims, 26 Drawing Sheets



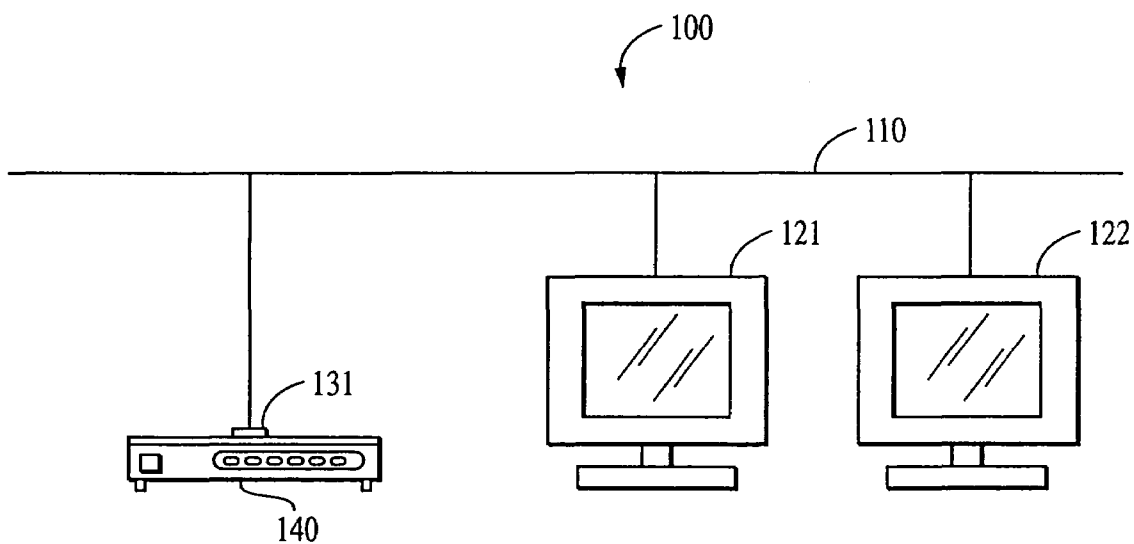


FIG. 1

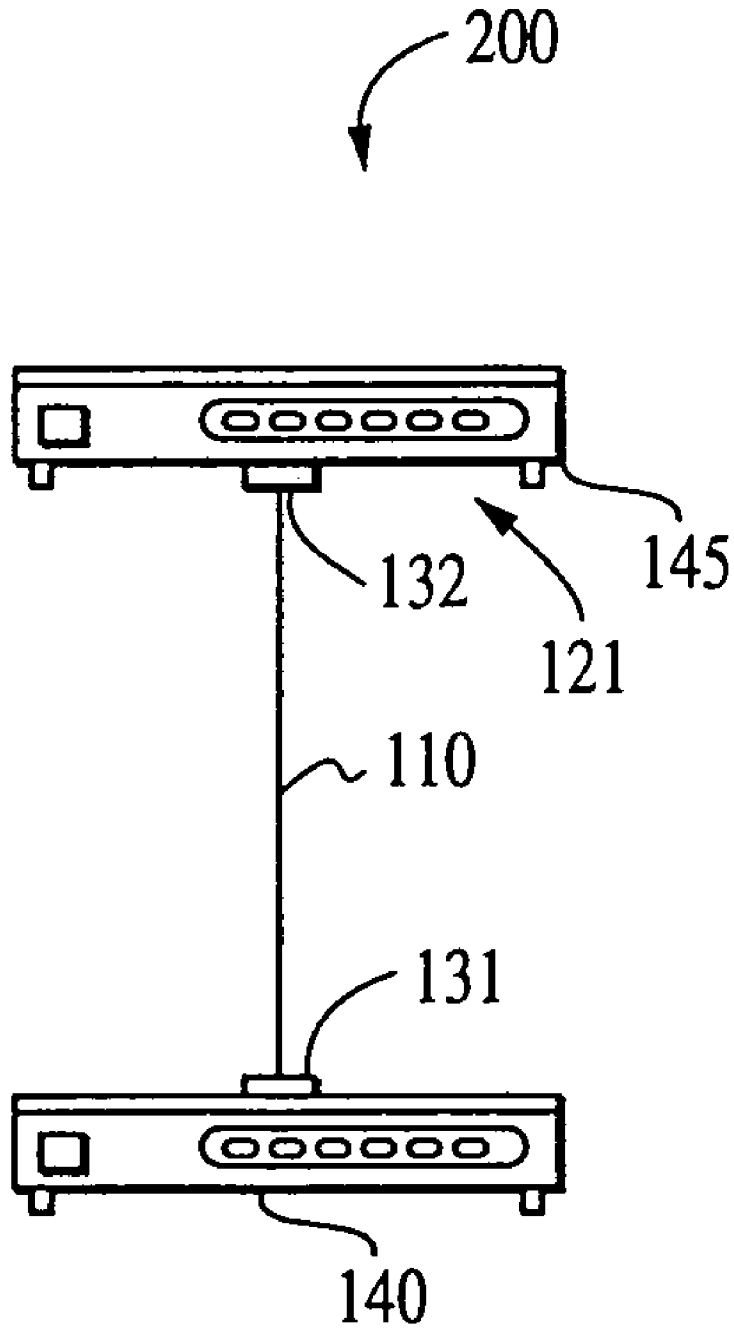


FIG. 2

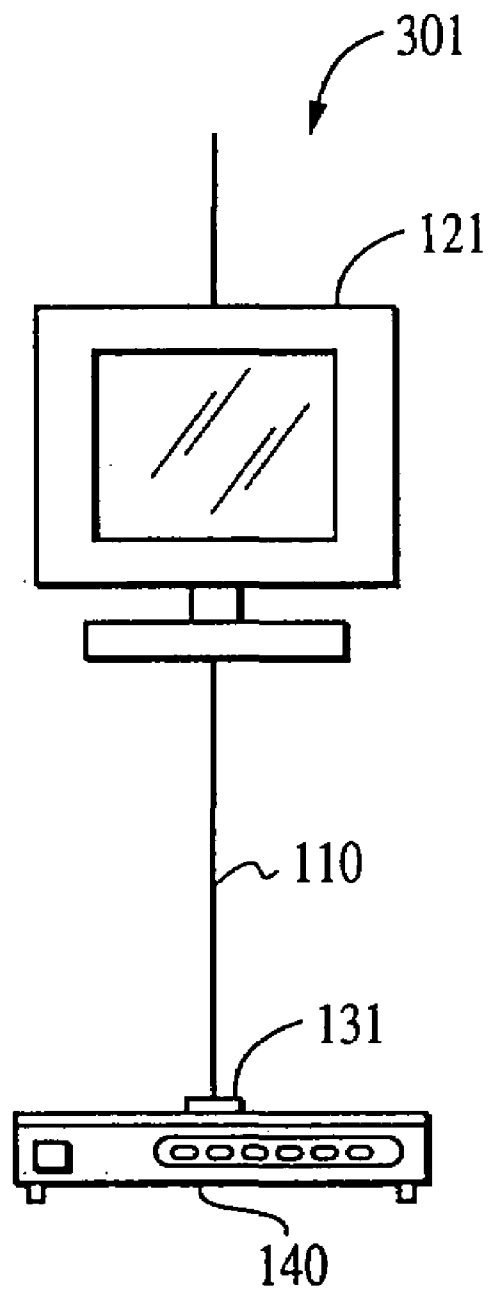


FIG. 3

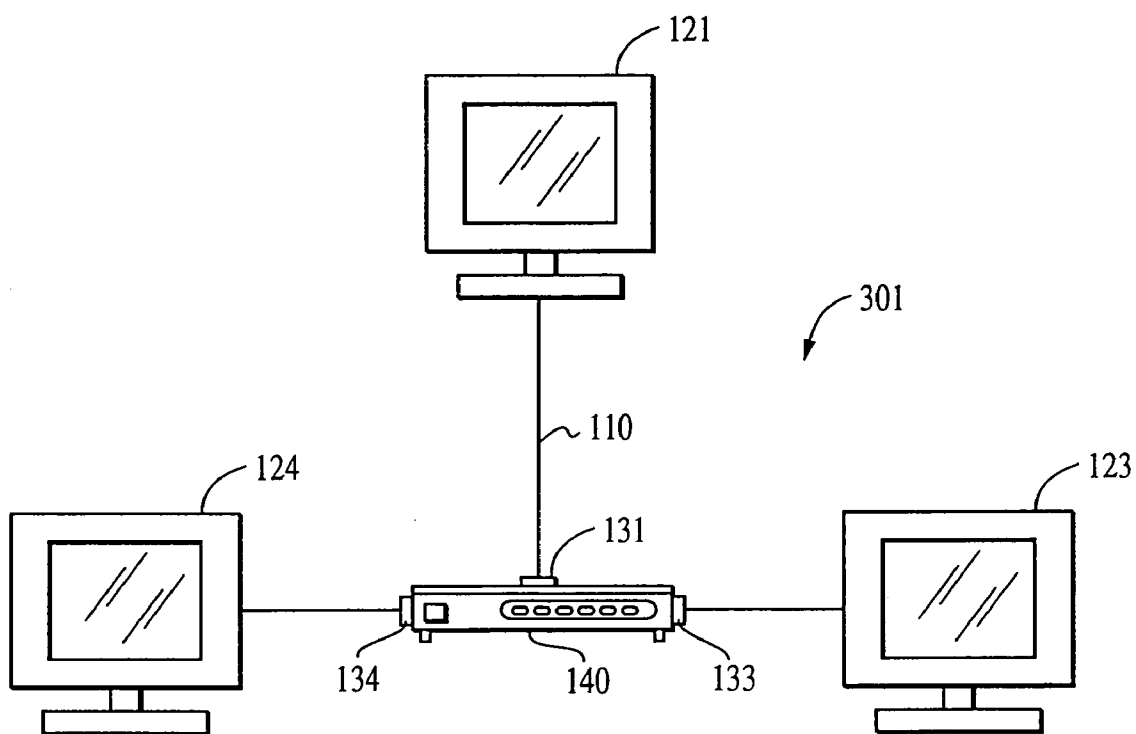


FIG. 4

Explore Litigation Insights

Docket Alarm provides insights to develop a more informed litigation strategy and the peace of mind of knowing you're on top of things.

Real-Time Litigation Alerts



Keep your litigation team up-to-date with **real-time alerts** and advanced team management tools built for the enterprise, all while greatly reducing PACER spend.

Our comprehensive service means we can handle Federal, State, and Administrative courts across the country.

Advanced Docket Research



With over 230 million records, Docket Alarm's cloud-native docket research platform finds what other services can't. Coverage includes Federal, State, plus PTAB, TTAB, ITC and NLRB decisions, all in one place.

Identify arguments that have been successful in the past with full text, pinpoint searching. Link to case law cited within any court document via Fastcase.

Analytics At Your Fingertips



Learn what happened the last time a particular judge, opposing counsel or company faced cases similar to yours.

Advanced out-of-the-box PTAB and TTAB analytics are always at your fingertips.

API

Docket Alarm offers a powerful API (application programming interface) to developers that want to integrate case filings into their apps.

LAW FIRMS

Build custom dashboards for your attorneys and clients with live data direct from the court.

Automate many repetitive legal tasks like conflict checks, document management, and marketing.

FINANCIAL INSTITUTIONS

Litigation and bankruptcy checks for companies and debtors.

E-DISCOVERY AND LEGAL VENDORS

Sync your system to PACER to automate legal marketing.