



US006370193B1

(12) **United States Patent**
Lee

(10) **Patent No.:** **US 6,370,193 B1**
(45) **Date of Patent:** **Apr. 9, 2002**

(54) **MPEG DATA COMPRESSION AND DECOMPRESSION USING ADJACENT DATA VALUE DIFFERENCING**

5,973,742 A * 10/1999 Gardyne et al. 348/416
6,023,295 A * 2/2000 Pau 348/405
6,028,635 A * 2/2000 Owen et al. 348/403
6,038,345 A * 3/2000 Osava et al. 382/232

(75) Inventor: **Yong-Woon Lee, Kyungki-do (KR)**

* cited by examiner

(73) Assignee: **Samsung Electronics Co., Ltd. (KR)**

Primary Examiner—Chris Kelley

Assistant Examiner—Tung Vo

(*) Notice: Subject to any disclaimer, the term of this patent is extended or adjusted under 35 U.S.C. 154(b) by 0 days.

(74) *Attorney, Agent, or Firm*—Myers Bigel Sibley & Sajovec

(57) **ABSTRACT**

(21) Appl. No.: **09/031,212**

(22) Filed: **Feb. 26, 1998**

(30) **Foreign Application Priority Data**

Feb. 26, 1997 (KR) 97-5916

(51) **Int. Cl.**⁷ **H04B 1/66**

(52) **U.S. Cl.** **375/240.15**

(58) **Field of Search** 348/384.1, 390.1, 348/342.1, 401, 402.1-405.1, 406.1, 416.1, 420.1, 423.1, 426.1; 364/578; 382/232; 375/240, 240.01, 240.02, 240.03, 240.09, 240.1, 240.11, 240.12, 240.13, 240.14; H04B 1/66

(56) **References Cited**

U.S. PATENT DOCUMENTS

5,223,949 A * 6/1993 Honjo 358/426
5,715,176 A * 2/1998 Mobini 364/514 R
5,729,293 A * 3/1998 Keesman 348/401
5,742,347 A * 4/1998 Kandlur et al. 348/426
5,831,677 A * 11/1998 Streater 348/415
5,832,037 A * 11/1998 Park 375/240
5,838,597 A * 11/1998 Pau et al. 364/715.02
5,844,608 A * 12/1998 Yu et al. 348/390
5,847,762 A * 12/1998 Candfield et al. 348/415
5,959,690 A * 9/1999 Toebes, VIII et al. 348/576

MPEG data is compressed by obtaining difference values between succeeding adjacent data values of MPEG video data and store the difference value if the difference value is less than a predetermined range. By storing the difference values rather than the data values if the difference value is less than a predetermined range, compression may be provided for MPEG data. More specifically, a series of data values of MPEG video data is separated from an MPEG bitstream. Difference values are obtained between succeeding adjacent data values of the MPEG video data. For each data value, the data value is stored if the difference exceeds a predetermined range, and the difference value is stored if the difference value is less than the predetermined range. A conversion flag is also stored for each data value, to indicate whether the data value or the difference value is stored. After the data value or difference value is stored for each data value, a determination is made if the data values and difference values that were stored exceed a predetermined size. Each data value is divided by 2, and the divided data values are stored if the data values and difference values that were stored exceed the predetermined size. On the other hand, if the data values and difference values that were stored are less than the predetermined size, dummy bits may be added to the data, so that the data that was stored equals the predetermined size. A mode flag may be used to indicate whether difference values or divided values are stored.

49 Claims, 10 Drawing Sheets

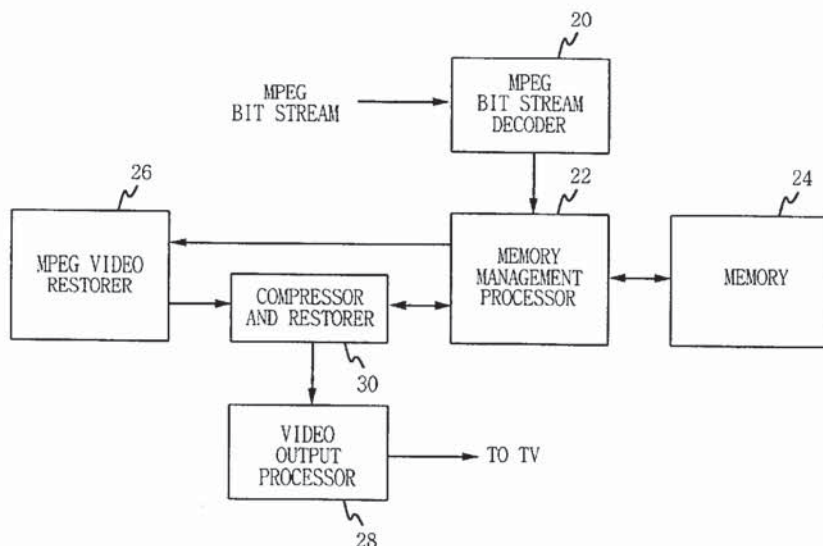


FIG.1(Prior Art)

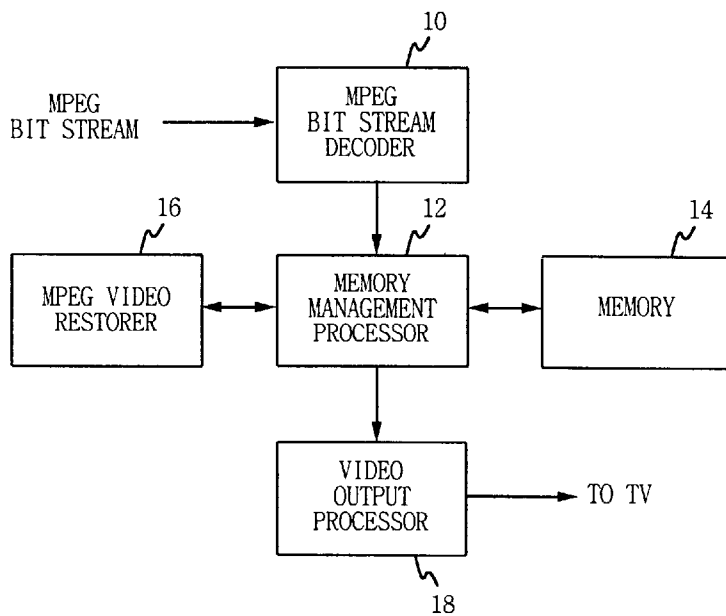


FIG.2

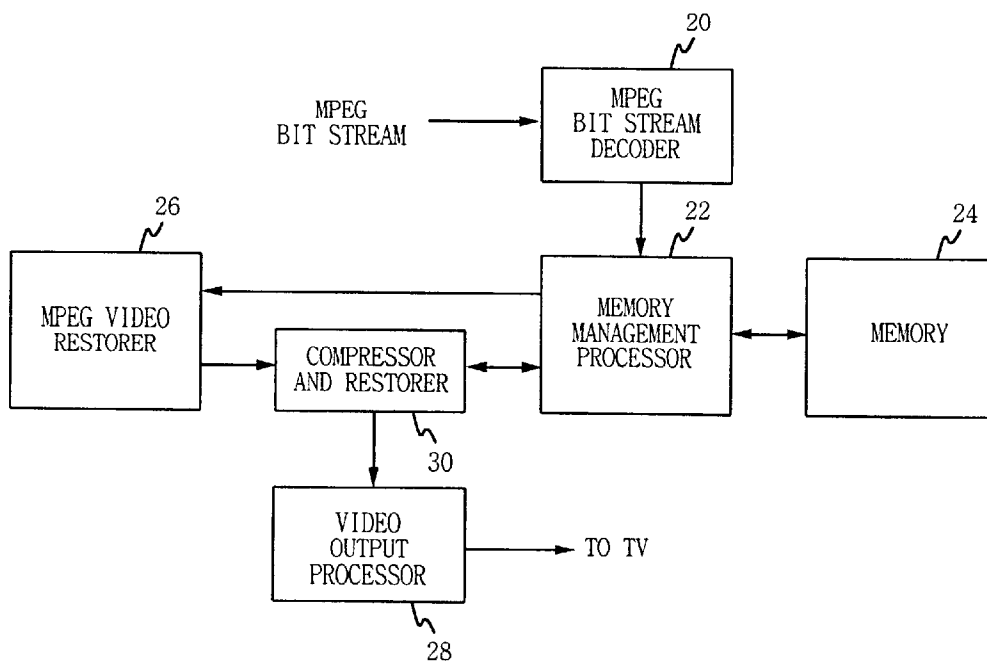


FIG. 3A

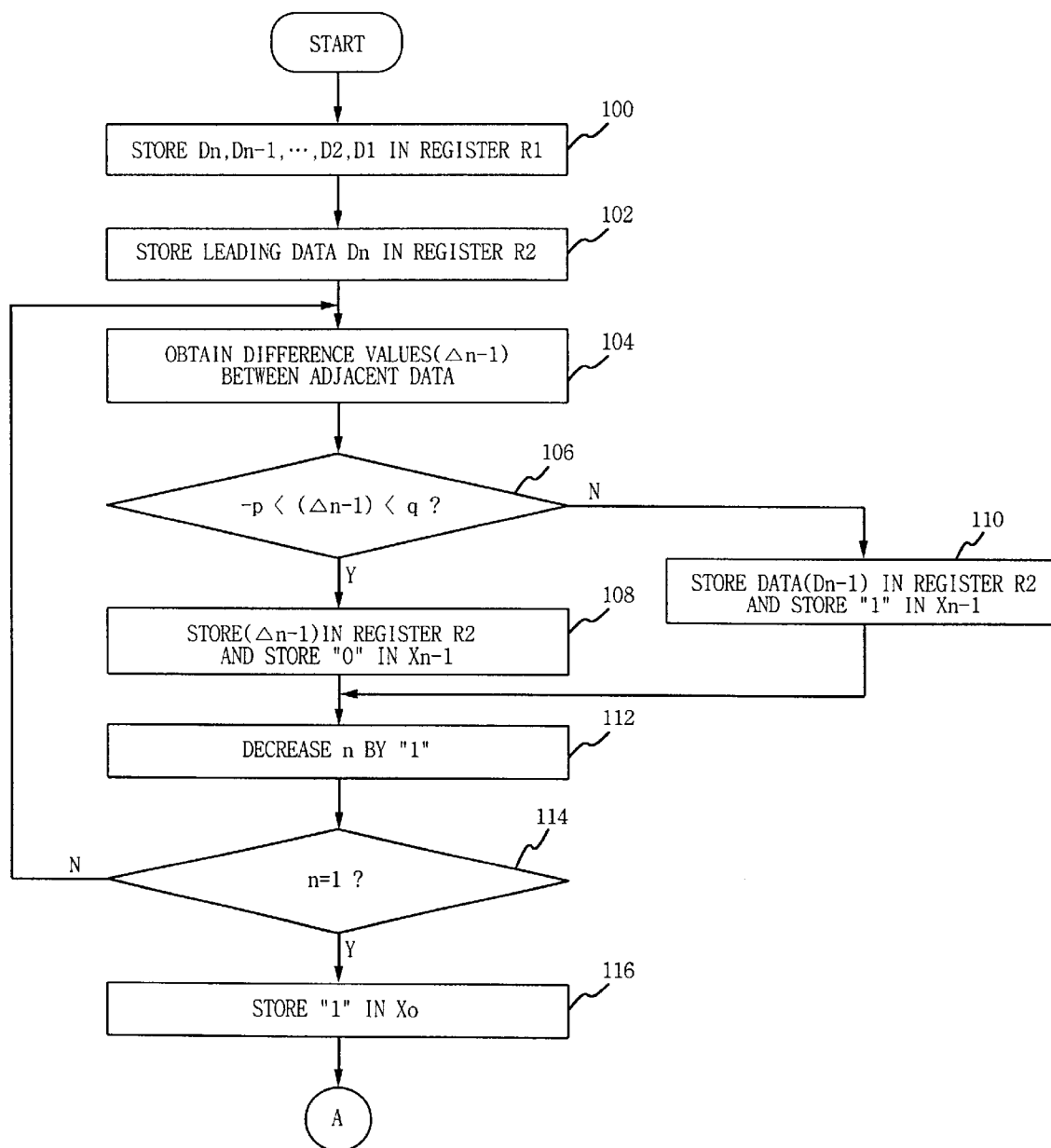


FIG. 3B

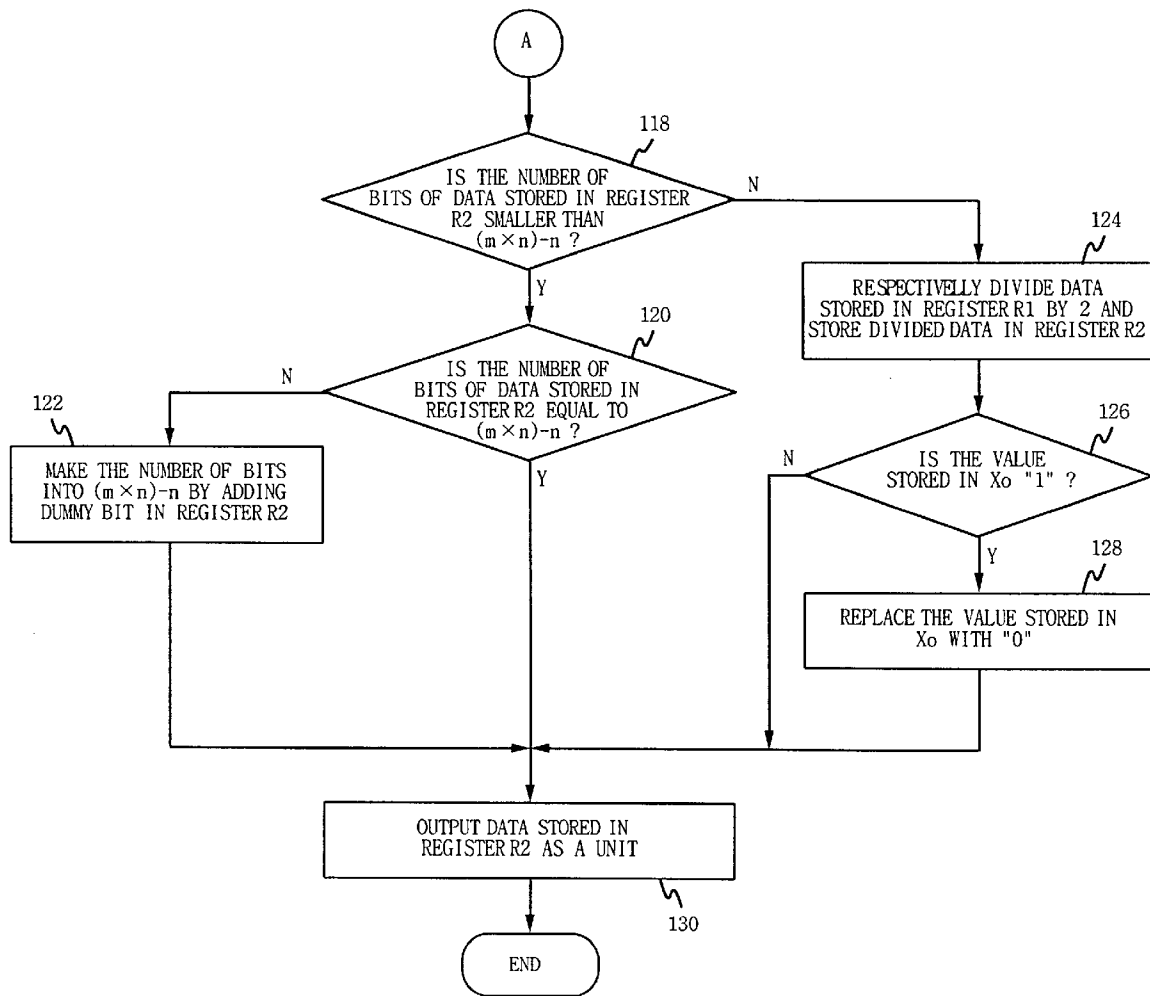


FIG. 4A

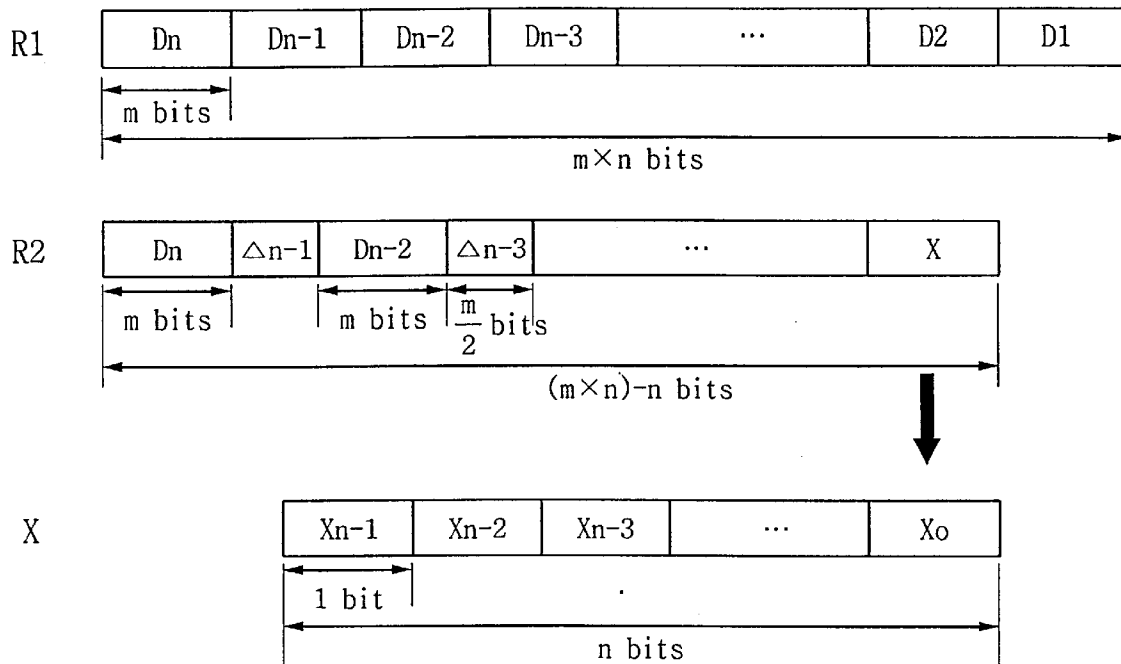
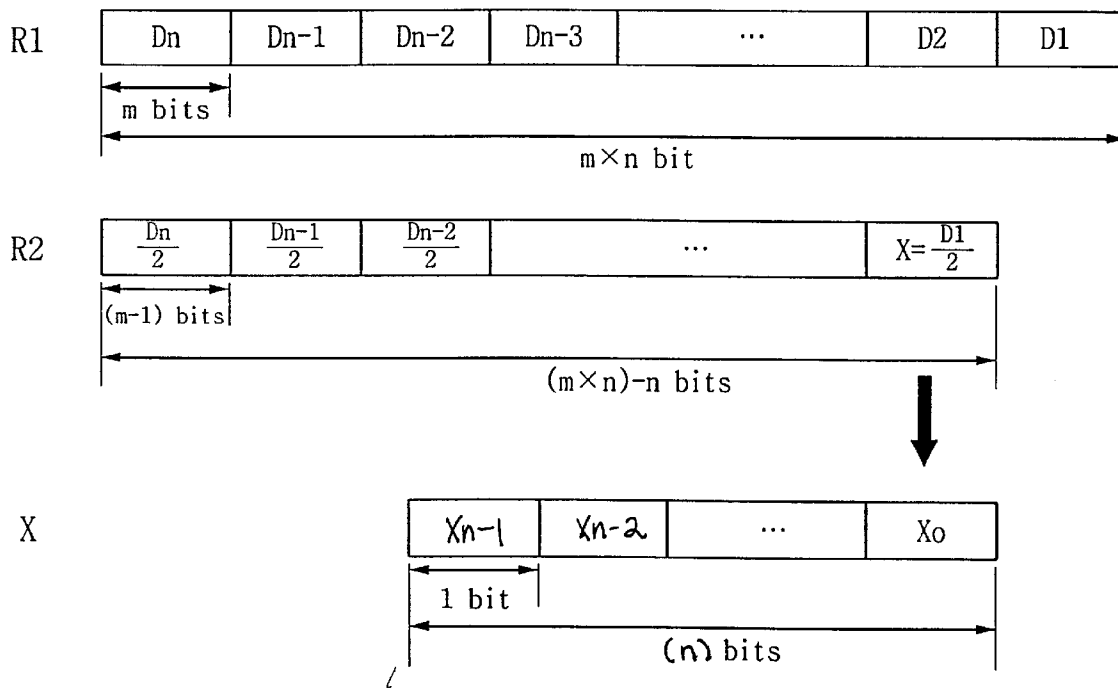


FIG. 4B



Explore Litigation Insights

Docket Alarm provides insights to develop a more informed litigation strategy and the peace of mind of knowing you're on top of things.

Real-Time Litigation Alerts



Keep your litigation team up-to-date with **real-time alerts** and advanced team management tools built for the enterprise, all while greatly reducing PACER spend.

Our comprehensive service means we can handle Federal, State, and Administrative courts across the country.

Advanced Docket Research



With over 230 million records, Docket Alarm's cloud-native docket research platform finds what other services can't. Coverage includes Federal, State, plus PTAB, TTAB, ITC and NLRB decisions, all in one place.

Identify arguments that have been successful in the past with full text, pinpoint searching. Link to case law cited within any court document via Fastcase.

Analytics At Your Fingertips



Learn what happened the last time a particular judge, opposing counsel or company faced cases similar to yours.

Advanced out-of-the-box PTAB and TTAB analytics are always at your fingertips.

API

Docket Alarm offers a powerful API (application programming interface) to developers that want to integrate case filings into their apps.

LAW FIRMS

Build custom dashboards for your attorneys and clients with live data direct from the court.

Automate many repetitive legal tasks like conflict checks, document management, and marketing.

FINANCIAL INSTITUTIONS

Litigation and bankruptcy checks for companies and debtors.

E-DISCOVERY AND LEGAL VENDORS

Sync your system to PACER to automate legal marketing.