



US006567122B1

(12) **United States Patent**  
**Anderson et al.**

(10) **Patent No.:** **US 6,567,122 B1**  
(45) **Date of Patent:** **May 20, 2003**

(54) **METHOD AND SYSTEM FOR HOSTING AN INTERNET WEB SITE ON A DIGITAL CAMERA**

2001/0010543 A1 \* 8/2001 Ward et al. .... 348/207.99  
2001/0014910 A1 \* 8/2001 Bobo, II ..... 709/217  
2001/0050711 A1 \* 12/2001 Karube et al. .... 348/220

(75) **Inventors:** **Eric C. Anderson**, San Jose, CA (US);  
**Michael A. Ramirez**, Palo Alto, CA (US);  
**Stephen G. Sullivan**, Mountain View, CA (US)

**FOREIGN PATENT DOCUMENTS**

EP 0 821 522 2/1998 ..... H04N/5/232  
EP 0835011 8/1998 .....  
WO WO 96/02106 1/1996 ..... H04N/5/232  
WO WO 97/38510 10/1997 ..... H04L/12/58

(73) **Assignee:** **IPAC Acquisition Subsidiary I**, Peterborough, NH (US)

**OTHER PUBLICATIONS**

**PATNEWS:** What isn't obvious in the patent world? E-Mail correspondence.

(\* ) **Notice:** Subject to any disclaimer, the term of this patent is extended or adjusted under 35 U.S.C. 154(b) by 0 days.

\* cited by examiner

(21) **Appl. No.:** **09/044,644**

*Primary Examiner*—Wendy R. Garber  
*Assistant Examiner*—Lin Ye

(22) **Filed:** **Mar. 18, 1998**

(74) *Attorney, Agent, or Firm*—Sawyer Law Group LLP

(51) **Int. Cl.**<sup>7</sup> ..... **H04N 5/232**; H04N 9/04; H04N 7/14; G06F 15/16

(57) **ABSTRACT**

(52) **U.S. Cl.** ..... **348/211.3**; 348/207.99; 348/14.01; 709/201; 709/217

The present invention comprises a method and system for implementing internet access to images stored in a digital image capture unit including an imaging device and a display. The image capture unit (e.g., a digital camera) is used to capture images and store them within its internal memory. The image capture unit accesses a ID server via the internet and registers its identity and internet address with the web server. A user subsequently accesses the image capture unit by entering the identity of the image capture unit into his web browser. The web browser, using standard internet protocols, then queries the ID server with the identity of the image capture unit and retrieves the internet address. The internet address is subsequently used to access a web page hosted by the image capture unit and display the web page to the user. The web page provides access to the stored images within the image capture unit.

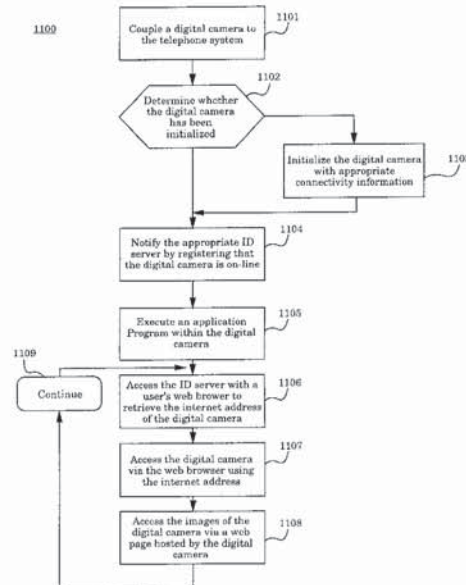
(58) **Field of Search** ..... 348/552, 207, 348/14, 14.03, 207.99, 207.1, 207.11, 211.3, 14.01; 709/201, 217, 219

(56) **References Cited**

**U.S. PATENT DOCUMENTS**

5,633,678 A \* 5/1997 Parulski et al. .... 348/232  
5,649,186 A \* 7/1997 Ferguson ..... 707/10  
5,999,207 A \* 12/1999 Rodriguez et al. .... 348/14  
6,012,088 A \* 1/2000 Li et al. .... 709/219  
6,035,323 A \* 3/2000 Narayen et al. .... 709/201  
6,163,335 A \* 12/2000 Barraclough ..... 348/15  
6,205,485 B1 \* 3/2001 Kikinis ..... 709/231  
6,246,430 B1 \* 6/2001 Peters et al. .... 348/14  
6,353,848 B1 \* 3/2002 Morris ..... 709/203

**22 Claims, 11 Drawing Sheets**



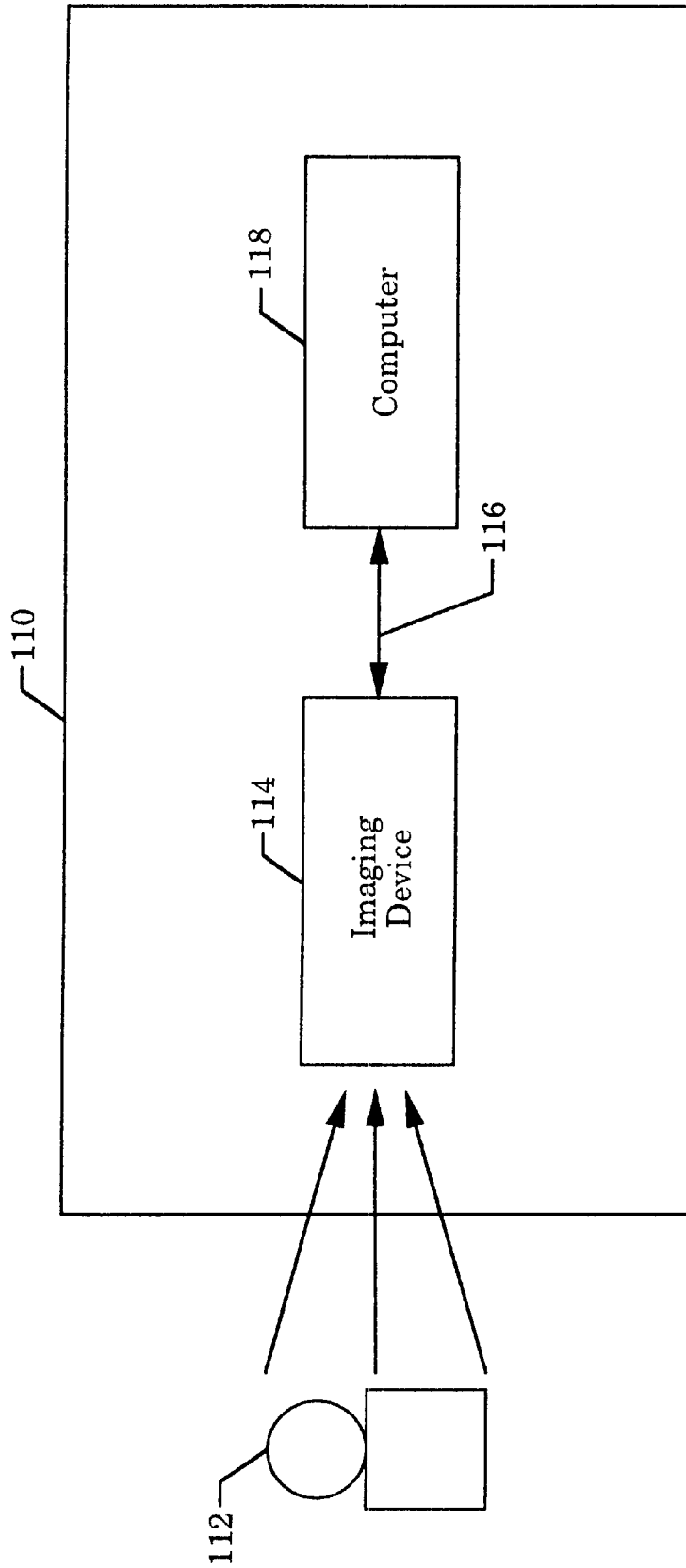


FIG. 1

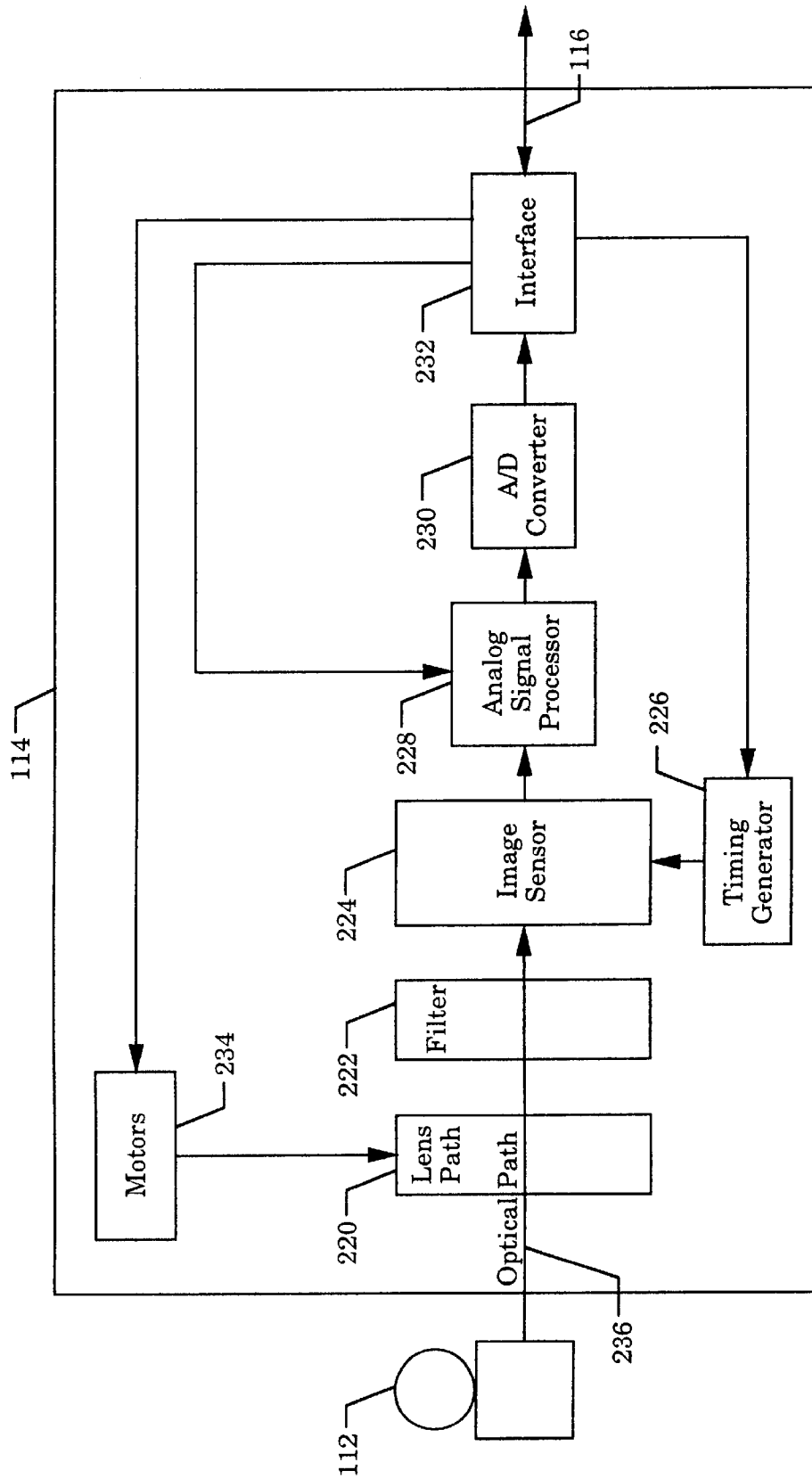
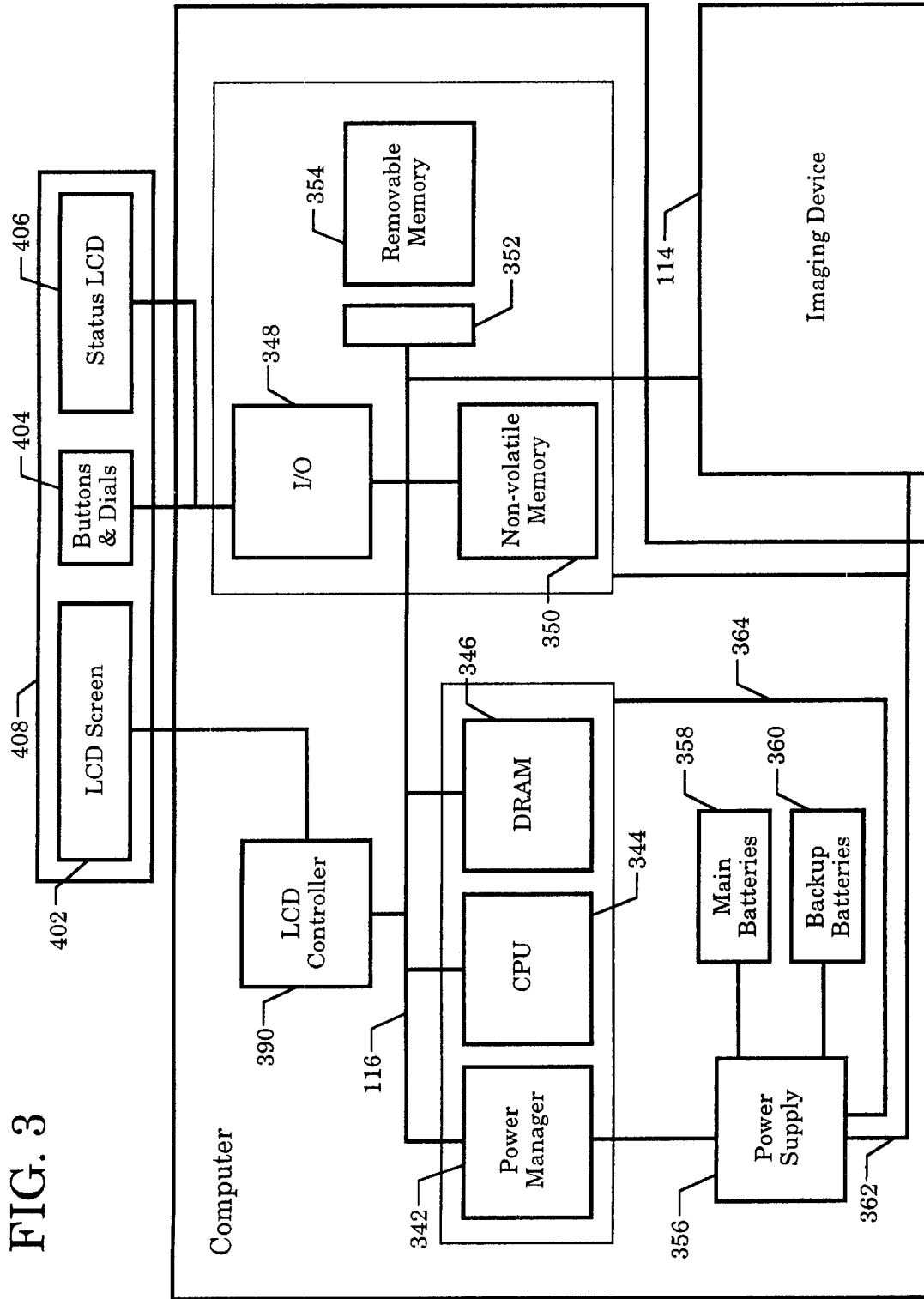


FIG. 2

FIG. 3



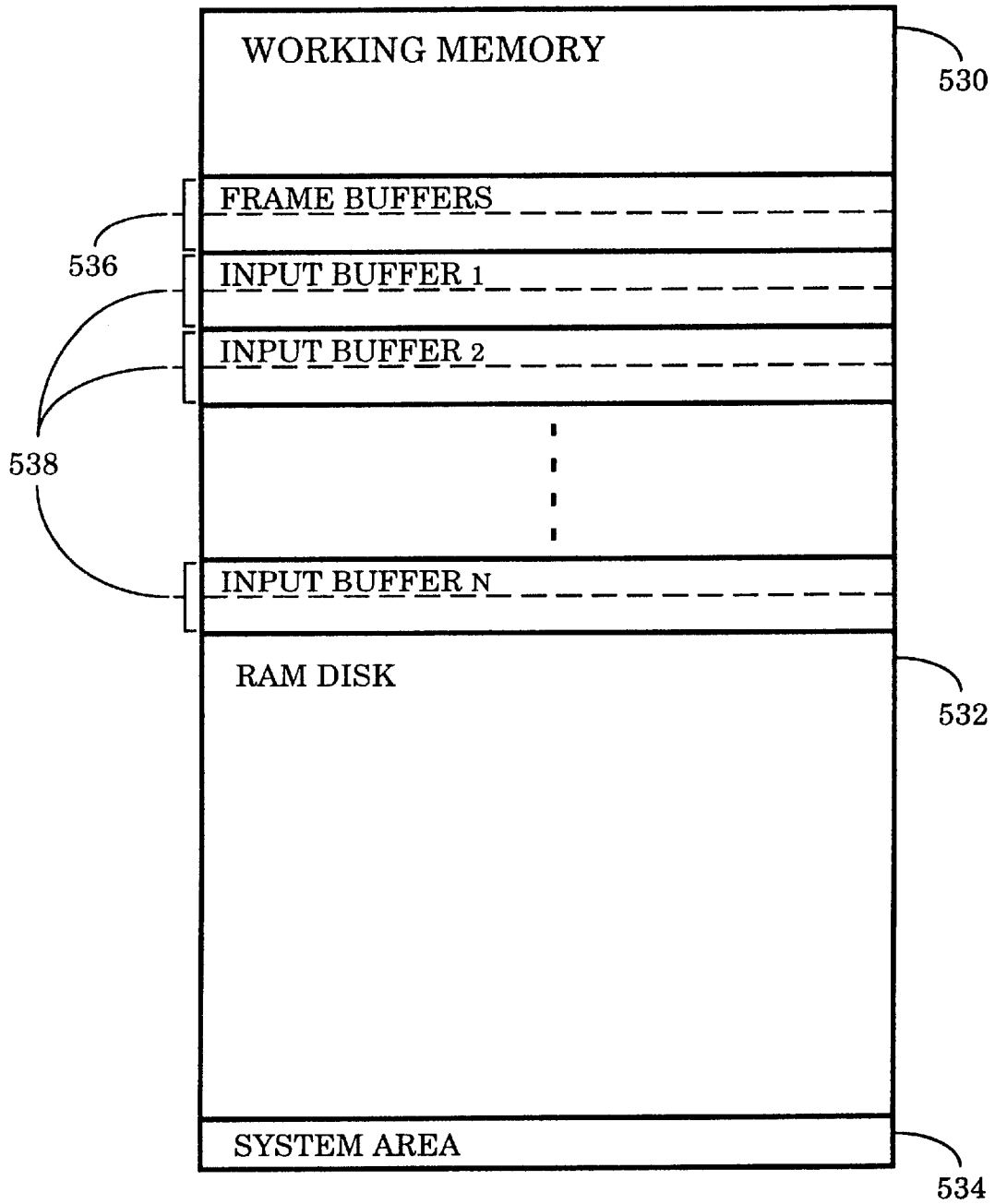


FIG. 4

# Explore Litigation Insights

Docket Alarm provides insights to develop a more informed litigation strategy and the peace of mind of knowing you're on top of things.

## Real-Time Litigation Alerts



Keep your litigation team up-to-date with **real-time alerts** and advanced team management tools built for the enterprise, all while greatly reducing PACER spend.

Our comprehensive service means we can handle Federal, State, and Administrative courts across the country.

## Advanced Docket Research



With over 230 million records, Docket Alarm's cloud-native docket research platform finds what other services can't. Coverage includes Federal, State, plus PTAB, TTAB, ITC and NLRB decisions, all in one place.

Identify arguments that have been successful in the past with full text, pinpoint searching. Link to case law cited within any court document via Fastcase.

## Analytics At Your Fingertips



Learn what happened the last time a particular judge, opposing counsel or company faced cases similar to yours.

Advanced out-of-the-box PTAB and TTAB analytics are always at your fingertips.

## API

Docket Alarm offers a powerful API (application programming interface) to developers that want to integrate case filings into their apps.

## LAW FIRMS

Build custom dashboards for your attorneys and clients with live data direct from the court.

Automate many repetitive legal tasks like conflict checks, document management, and marketing.

## FINANCIAL INSTITUTIONS

Litigation and bankruptcy checks for companies and debtors.

## E-DISCOVERY AND LEGAL VENDORS

Sync your system to PACER to automate legal marketing.