

[54] **METHOD AND APPARATUS FOR TRACKING CLIENT INTERACTION WITH A NETWORK RESOURCE AND CREATING CLIENT PROFILES AND RESOURCE DATABASE**

Primary Examiner—Robert B. Harrell
Attorney, Agent, or Firm—Adams & Wilks

[57] **ABSTRACT**

[75] Inventors: **Owen Davis**, New York; **Vidyt Jain**, Brooklyn, both of N.Y.

A method for monitoring client interaction with a resource downloaded from a server in a computer network includes the steps of using a client to specify an address of a resource located on a first server, downloading a file corresponding to the resource from the first server in response to specification of the address, using the client to specify an address of a first executable program located on a second server, the address of the first executable program being embedded in the file downloaded from the first server, the first executable program including a software timer for monitoring the amount of time the client spends interacting with and displaying the file downloaded from the first server, downloading the first executable program from the second server to run on the client so as to determine the amount of time the client interacts with the file downloaded from the first server, using a server to acquire client identifying indicia from the client, and uploading the amount of time determined by the first executable program to a third server. The first executable program may also monitor time, keyboard events, mouse events, and the like, in order to track choices and selections made by a user in the file, and may execute upon the occurrence of a predetermined event, as well as monitoring or determining the amount of information downloaded by the client. The monitored information and client identifying indicia is stored on a database in a server for use in analysis and for automatically serving out files assembled according to user interests and preferences.

[73] Assignee: **Dot Com Development, Inc.**, New York, N.Y.

[21] Appl. No.: **821,534**

[22] Filed: **Mar. 21, 1997**

[51] Int. Cl.⁶ **G06F 13/00**

[52] U.S. Cl. **395/200.54**

[58] **Field of Search** 364/DIG. 1 MS File, 364/DIG. 2 MS File; 380/4; 395/200.3, 200.31, 200.32, 200.33, 200.54, 280, 381, 670, 680, 712

[56] **References Cited**

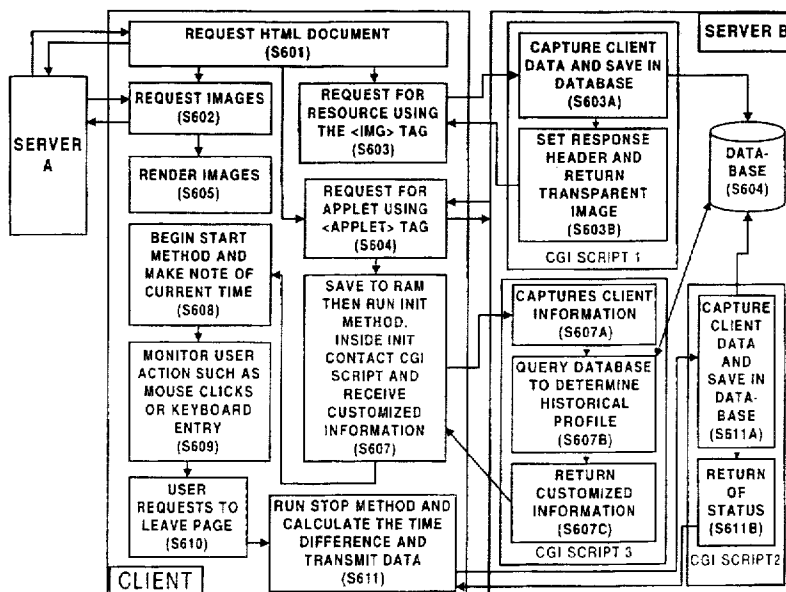
U.S. PATENT DOCUMENTS

4,977,594	12/1990	Shear	380/4
5,638,443	6/1997	Stefik et al.	380/4
5,675,510	10/1997	Coffey et al.	364/514 A
5,682,525	10/1997	Bouve et al.	395/615
5,706,502	1/1998	Foley et al.	395/682
5,708,780	1/1998	Levergood et al.	395/200.12
5,710,918	1/1998	Lagarde et al.	395/680
5,715,453	2/1998	Stewart	395/615

OTHER PUBLICATIONS

S. Gundavaram, *CGI Programming on the World Wide Web* (O'Reilly & Assoc., Inc.), pp. 202-204.
G. Cornell and S. Horstmann, *Core Java* (The Sunsoft Press), pp. 562-579.

71 Claims, 7 Drawing Sheets



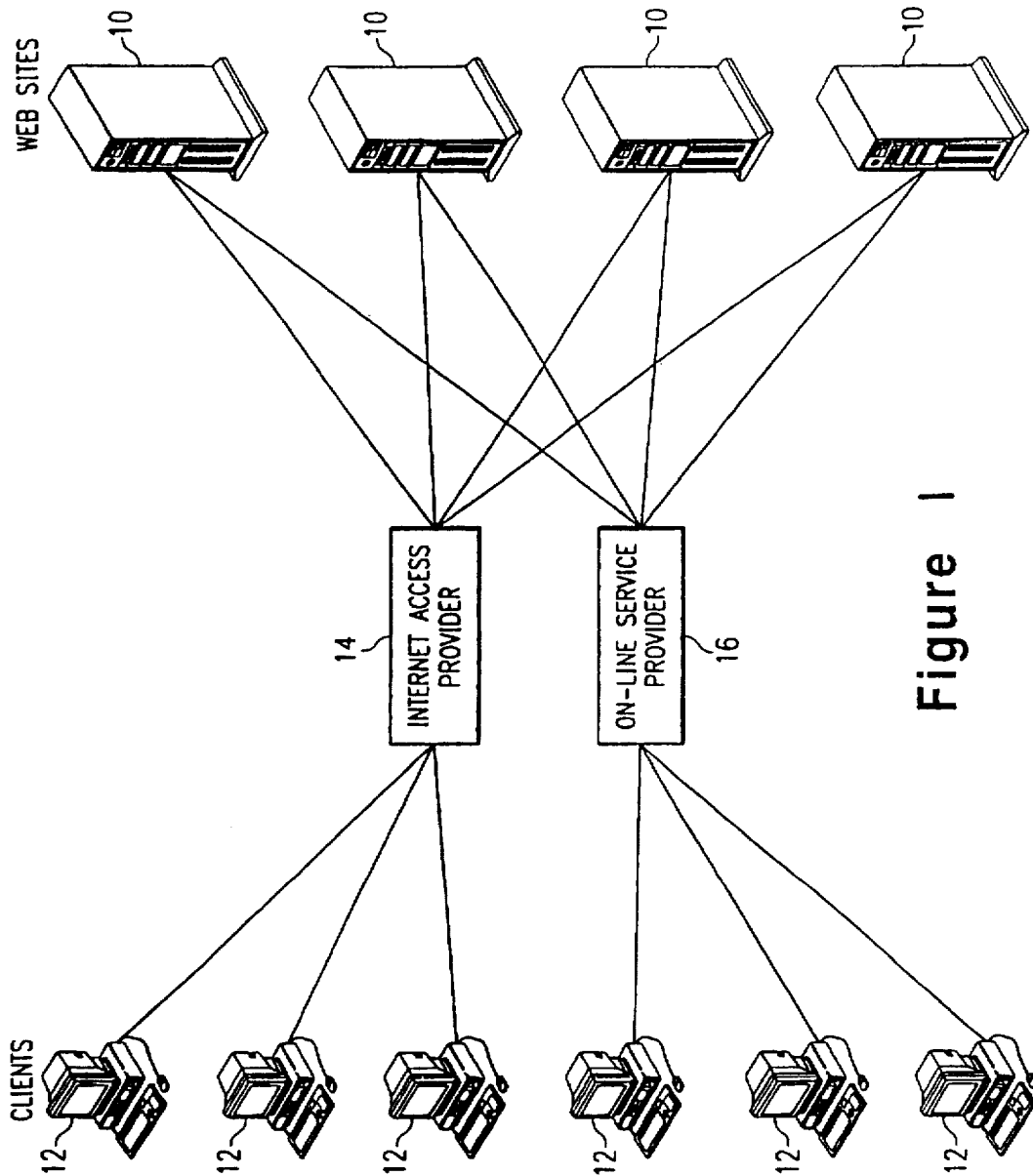
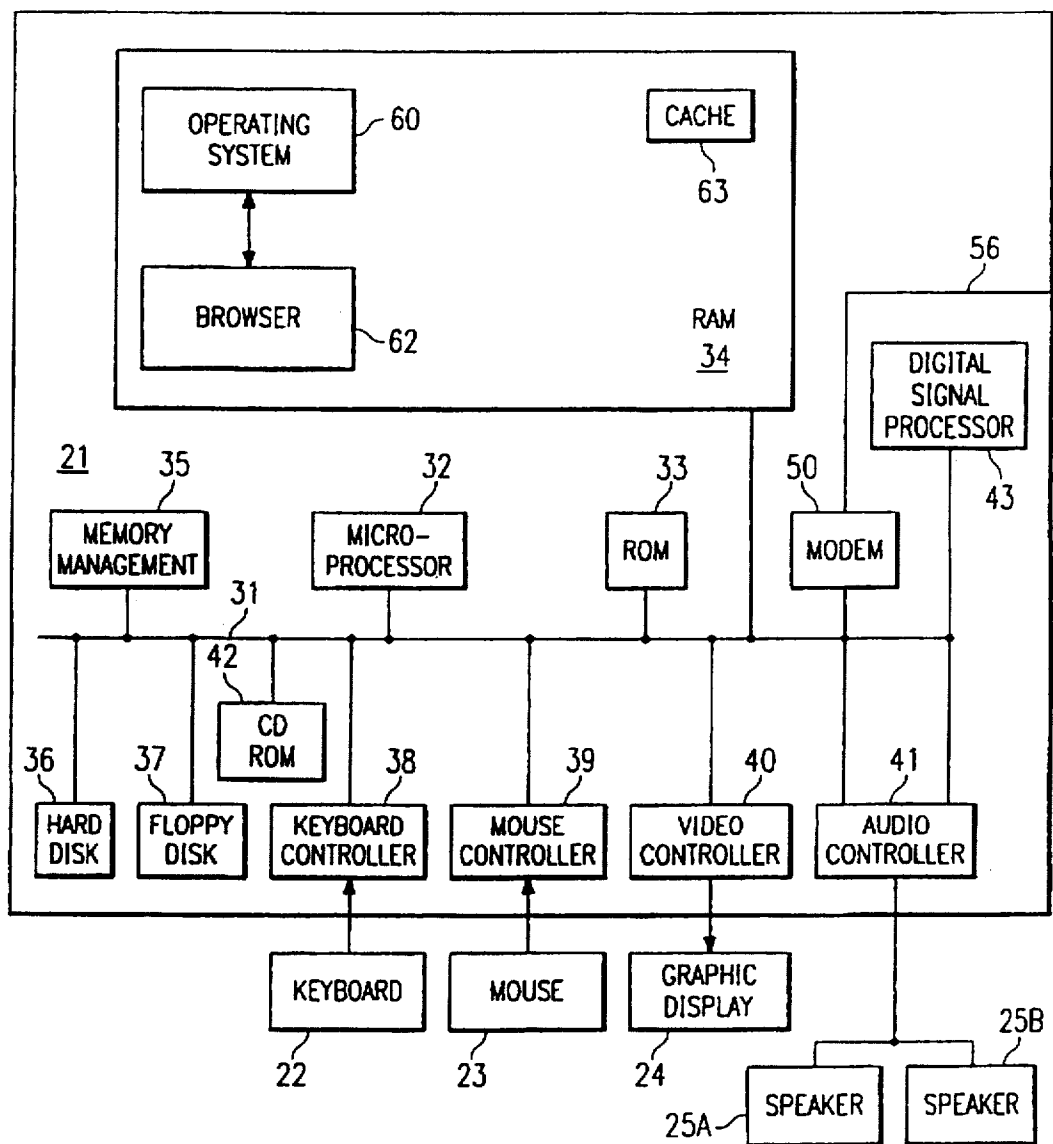


Figure 1

Figure 2



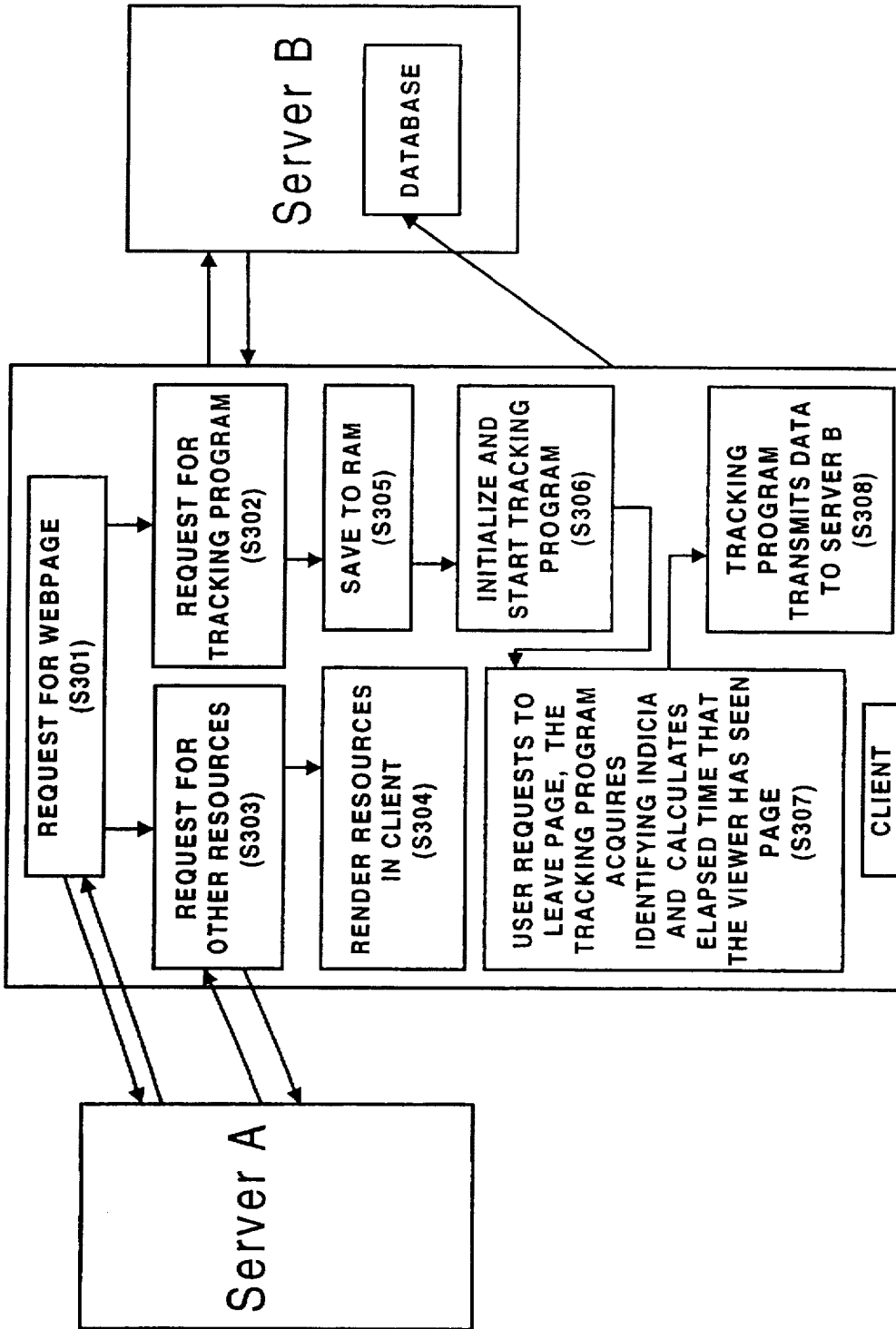


Figure 3

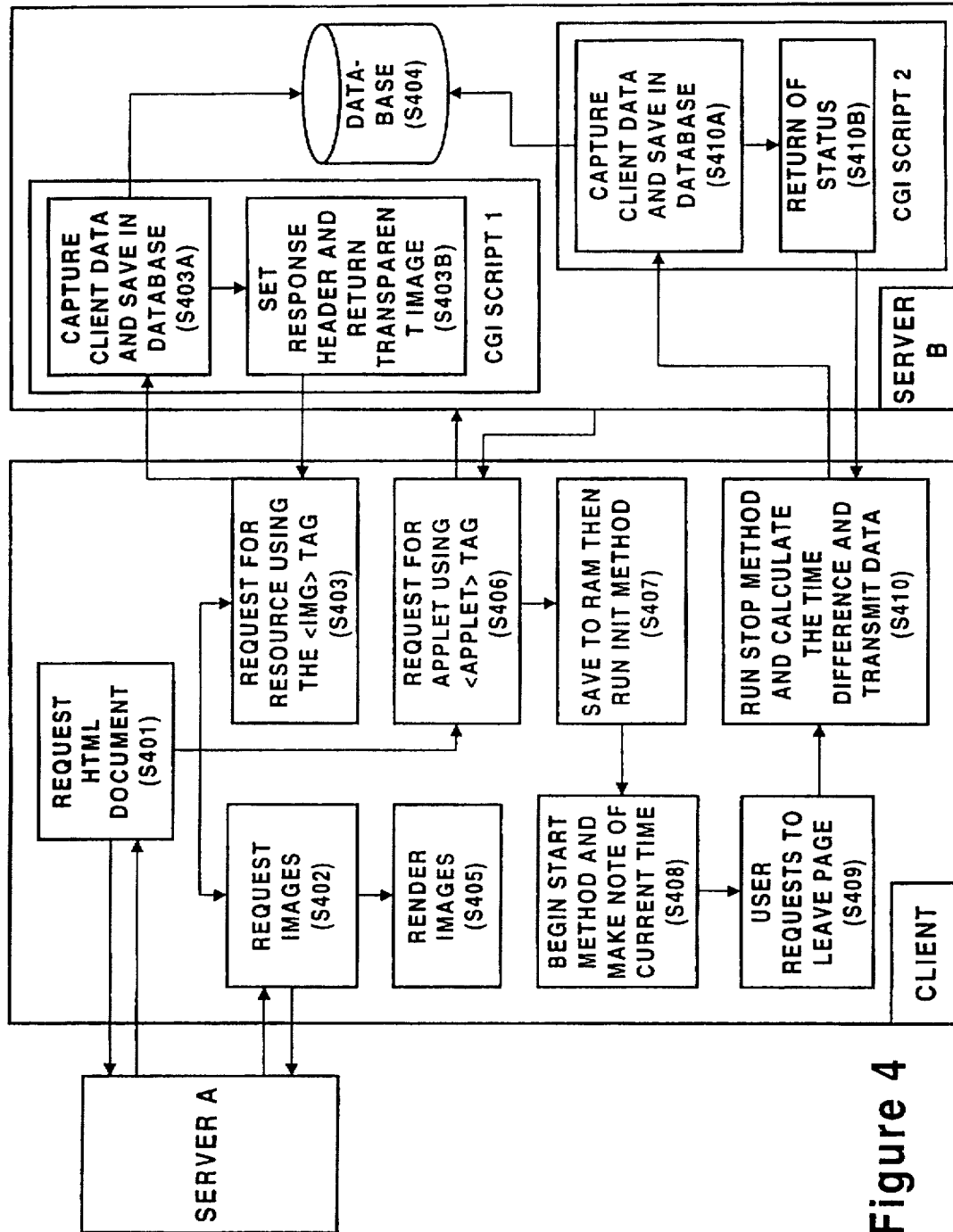


Figure 4

Explore Litigation Insights

Docket Alarm provides insights to develop a more informed litigation strategy and the peace of mind of knowing you're on top of things.

Real-Time Litigation Alerts



Keep your litigation team up-to-date with **real-time alerts** and advanced team management tools built for the enterprise, all while greatly reducing PACER spend.

Our comprehensive service means we can handle Federal, State, and Administrative courts across the country.

Advanced Docket Research



With over 230 million records, Docket Alarm's cloud-native docket research platform finds what other services can't. Coverage includes Federal, State, plus PTAB, TTAB, ITC and NLRB decisions, all in one place.

Identify arguments that have been successful in the past with full text, pinpoint searching. Link to case law cited within any court document via Fastcase.

Analytics At Your Fingertips



Learn what happened the last time a particular judge, opposing counsel or company faced cases similar to yours.

Advanced out-of-the-box PTAB and TTAB analytics are always at your fingertips.

API

Docket Alarm offers a powerful API (application programming interface) to developers that want to integrate case filings into their apps.

LAW FIRMS

Build custom dashboards for your attorneys and clients with live data direct from the court.

Automate many repetitive legal tasks like conflict checks, document management, and marketing.

FINANCIAL INSTITUTIONS

Litigation and bankruptcy checks for companies and debtors.

E-DISCOVERY AND LEGAL VENDORS

Sync your system to PACER to automate legal marketing.