



US008860584B1

(12) **United States Patent**
Matak

(10) **Patent No.:** **US 8,860,584 B1**
(45) **Date of Patent:** **Oct. 14, 2014**

- (54) **ATHLETIC-WEAR HAVING INTEGRAL MEASURING SENSORS** 5,720,200 A 2/1998 Anderson et al.
- 5,724,265 A 3/1998 Hutchings
- 5,844,861 A 12/1998 Maurer
- (75) Inventor: **Martin Matak**, Plantation, FL (US) 6,181,647 B1 1/2001 Tipton et al.
- 6,243,659 B1 6/2001 Dominici et al.
- (73) Assignee: **Mayfonk Athletic, LLC**, Plantation, FL (US) 6,499,000 B2 12/2002 Flentov et al.
- 6,614,352 B2 9/2003 Pellet et al.
- 7,054,784 B2 5/2006 Flentov et al.
- (*) Notice: Subject to any disclaimer, the term of this patent is extended or adjusted under 35 U.S.C. 154(b) by 0 days. 7,171,331 B2 1/2007 Vock et al.
- 7,192,387 B2 3/2007 Mendel
- 7,200,517 B2 4/2007 Darley et al.
- (21) Appl. No.: **13/591,895** 7,331,310 B1 2/2008 Sersland et al.
- 7,693,668 B2 4/2010 Vock et al.
- (22) Filed: **Aug. 22, 2012** 2007/0011919 A1 1/2007 Case, Jr.
- 2007/0021269 A1 1/2007 Shum
- 2007/0142715 A1 6/2007 Banet et al.
- 2008/0306707 A1* 12/2008 Vock et al. 702/141

* cited by examiner

Related U.S. Application Data

(62) Division of application No. 12/429,246, filed on Apr. 24, 2009, now Pat. No. 8,253,586.

(51) **Int. Cl.**
G08C 19/22 (2006.01)
H04Q 9/00 (2006.01)
G01L 1/00 (2006.01)
G01L 3/00 (2006.01)

(52) **U.S. Cl.**
USPC **340/870.07; 702/44; 702/160**

(58) **Field of Classification Search**
USPC **340/870.07**
See application file for complete search history.

(56) **References Cited**

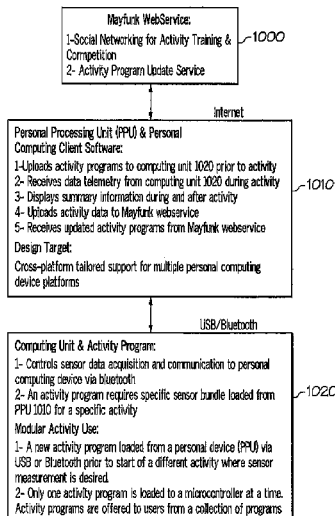
U.S. PATENT DOCUMENTS

- 4,089,057 A 5/1978 Eriksson
- 4,371,945 A 2/1983 Karr et al.
- 4,703,445 A 10/1987 Dassler
- 4,722,222 A 2/1988 Purdy et al.
- 4,736,312 A 4/1988 Dassler et al.
- 5,206,652 A 4/1993 Hoyt et al.
- 5,452,269 A 9/1995 Cherdak

(57) **ABSTRACT**

A performance measuring system integrated with an article of clothing, the system has a computing unit for coordinating, processing and transmission of sensor data connected to a bus and an antenna. A sensor for measuring performance characteristics is connected to the bus; the bus facilitates transmission and reception of control and data values between the computing unit and the sensor. Also, an antenna is connected to the computing unit for communicating with other computing devices and transmission of sensor data. The other computing devices display the sensor data to a user or forward the sensor data onto another communication media such as the internet or interactive television. A social networking system sharing athletic statistics using a webservice, a personal processing unit connectable to the webservice, and a computing unit having an activity program for at least one sensor. This system has an activity update service integrally associated with the webservice.

27 Claims, 12 Drawing Sheets



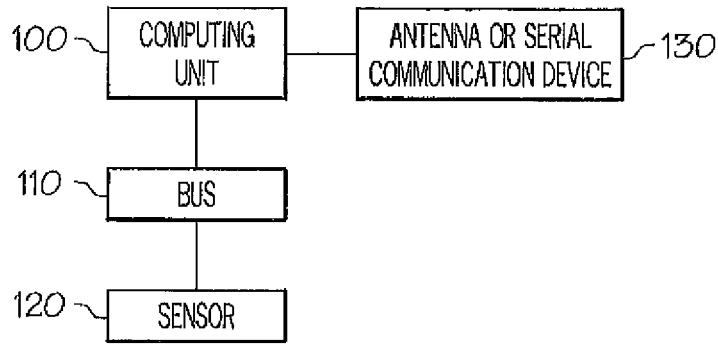


FIG. 1

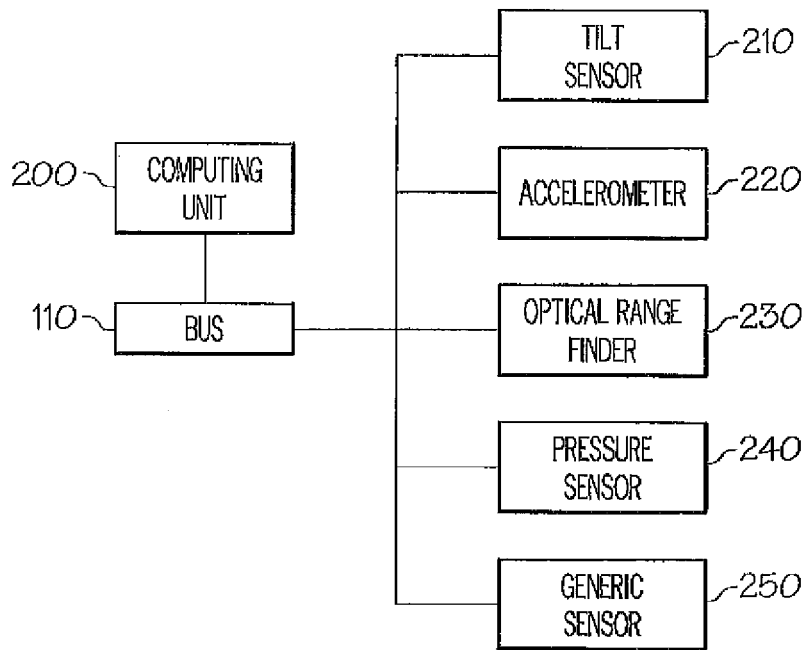


FIG. 2

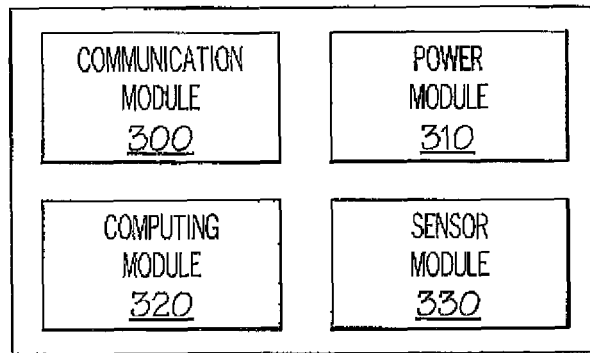


FIG. 3A

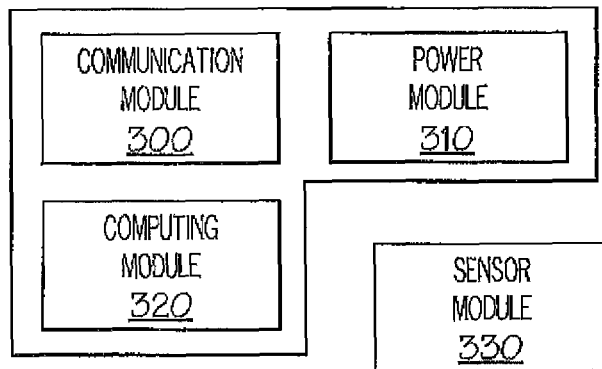


FIG. 3B

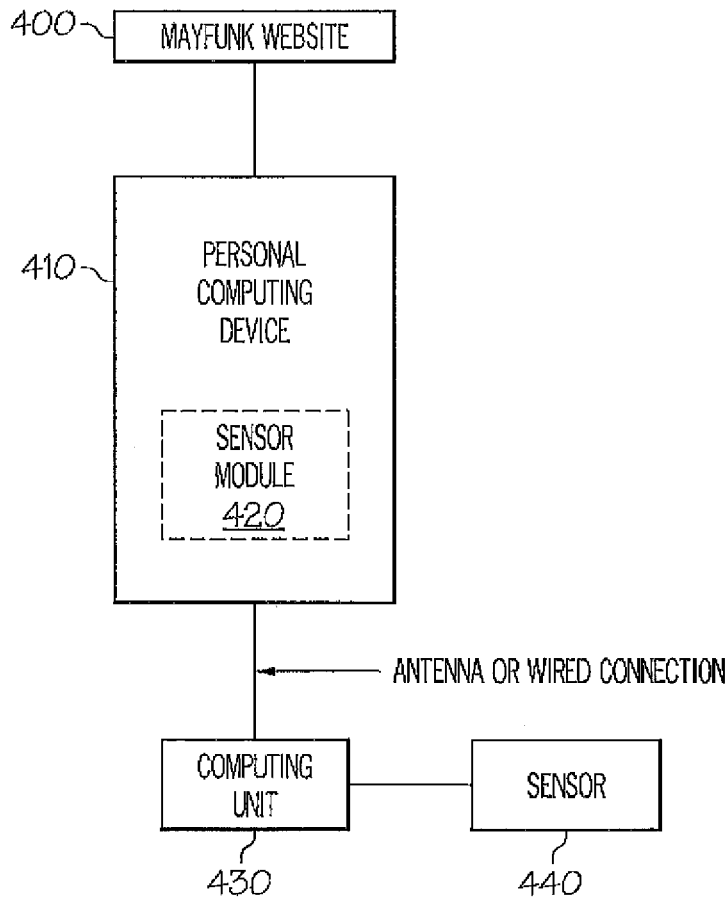


FIG. 4

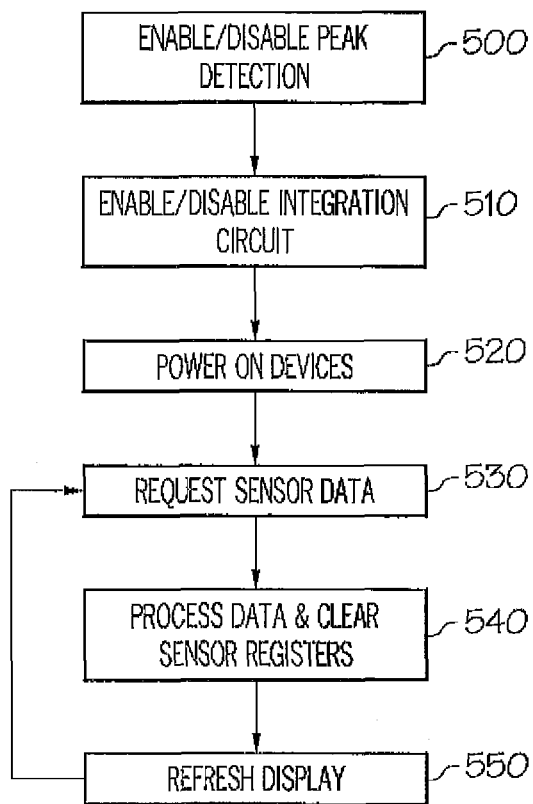


FIG. 5

Explore Litigation Insights

Docket Alarm provides insights to develop a more informed litigation strategy and the peace of mind of knowing you're on top of things.

Real-Time Litigation Alerts



Keep your litigation team up-to-date with **real-time alerts** and advanced team management tools built for the enterprise, all while greatly reducing PACER spend.

Our comprehensive service means we can handle Federal, State, and Administrative courts across the country.

Advanced Docket Research



With over 230 million records, Docket Alarm's cloud-native docket research platform finds what other services can't. Coverage includes Federal, State, plus PTAB, TTAB, ITC and NLRB decisions, all in one place.

Identify arguments that have been successful in the past with full text, pinpoint searching. Link to case law cited within any court document via Fastcase.

Analytics At Your Fingertips



Learn what happened the last time a particular judge, opposing counsel or company faced cases similar to yours.

Advanced out-of-the-box PTAB and TTAB analytics are always at your fingertips.

API

Docket Alarm offers a powerful API (application programming interface) to developers that want to integrate case filings into their apps.

LAW FIRMS

Build custom dashboards for your attorneys and clients with live data direct from the court.

Automate many repetitive legal tasks like conflict checks, document management, and marketing.

FINANCIAL INSTITUTIONS

Litigation and bankruptcy checks for companies and debtors.

E-DISCOVERY AND LEGAL VENDORS

Sync your system to PACER to automate legal marketing.