

# Three Times Weekly Glatiramer Acetate in Relapsing–Remitting Multiple Sclerosis

Omar Khan, MD,<sup>1</sup> Peter Rieckmann, MD,<sup>2</sup> Alexey Boyko, MD,<sup>3</sup>  
Krzysztof Selmaj, MD,<sup>4</sup> and Robert Zivadinov, MD, PhD,<sup>5</sup>  
for the GALA Study Group

**Objective:** To assess the efficacy and safety of glatiramer acetate (GA) 40mg administered 3× weekly (tiw) compared with placebo in patients with relapsing–remitting multiple sclerosis (RRMS).

**Methods:** This randomized, double-blind study was conducted in 142 sites in 17 countries. Patients with RRMS with at least 1 documented relapse in the 12 months before screening, or at least 2 documented relapses in the 24 months before screening, and an Expanded Disability Status Scale score  $\leq 5.5$ , were randomized 2:1 to receive either subcutaneous (sc) GA 40mg tiw (1ml) or placebo for 12 months.

**Results:** Of 1,524 patients screened, 1,404 were randomized to receive GA 40mg sc tiw ( $n = 943$ ) or placebo ( $n = 461$ ). Ninety-three percent and 91% of patients in the placebo and GA groups, respectively, completed the 12-month study. GA 40mg tiw was associated with a 34.0% reduction in risk of confirmed relapses compared with placebo (mean annualized relapse rate = 0.331 vs 0.505;  $p < 0.0001$ ). Patients who received GA 40mg tiw experienced highly significant reduction ( $p < 0.0001$ ) in the cumulative number of gadolinium-enhancing T1 (44.8%) and new or newly enlarging T2 lesions (34.7%) at months 6 and 12. GA 40mg tiw was safe and well tolerated. The most common adverse events in the GA group were injection site reactions (35.5% with GA vs 5.0% with placebo).

**Interpretation:** GA 40mg sc tiw is a safe and effective regimen for the treatment of RRMS, providing the convenience of fewer sc injections per week.

ANN NEUROL 2013;73:705–713

Multiple sclerosis (MS) is a chronic relapsing disorder of the central nervous system characterized by inflammation, multifocal demyelination, astrocytic proliferation, and neuronal and axonal damage.<sup>1,2</sup> MS affects >2 million people worldwide, with about 85% of patients presenting with a relapsing–remitting (RR) course, defined by acute attacks and intervening periods of full or partial recovery without disease progression.<sup>3,4</sup> Although there is no cure for MS, current disease-modifying therapies aimed at reducing relapse rates and slowing disease progression have improved the prognosis for patients with MS.<sup>3</sup>

Glatiramer acetate (GA), a heterogeneous mixture of synthetic polypeptides composed of 4 amino acids, is approved for reducing relapse frequency in patients with RRMS, including patients who have experienced a first clinical episode and have magnetic resonance imaging (MRI) features consistent with MS (clinically isolated syndromes).<sup>5</sup> Although the precise mechanism by which GA mediates clinical benefit in MS has not been fully elucidated, it is known to have multiple coordinated immunomodulatory effects involving T cells and B cells of the adaptive immune system, and antigen-nonspecific

Members of the GALA Study Group are listed in the Appendix on page 8.

View this article online at [wileyonlinelibrary.com](http://wileyonlinelibrary.com). DOI: 10.1002/ana.23938

Received Feb 8, 2013, and in revised form Apr 28, 2013. Accepted for publication May 10, 2013.

Address correspondence to Dr Khan, Department of Neurology, Wayne State University School of Medicine, 4201 St Antoine, 8D-University Health Center, Detroit, MI 48201. E-mail: [okhan@med.wayne.edu](mailto:okhan@med.wayne.edu)

From the <sup>1</sup>Department of Neurology and Multiple Sclerosis Center, Wayne State University School of Medicine, Detroit, MI; <sup>2</sup>Department of Neurology, Bamberg Academic Hospital, University of Erlangen, Bamberg, Germany; <sup>3</sup>Department of Neurology and Neurosurgery, Russian National Medical Research University and Moscow Multiple Sclerosis Center, Moscow, Russia; <sup>4</sup>Department of Neurology, Medical University of Lodz, Lodz, Poland;

<sup>5</sup>Department of Neurology, Buffalo Neuroimaging Analysis Center, Department of Neurology, University of Buffalo, Buffalo, NY.

Additional supporting information can be found in the online version of this article.

alteration of the function of antigen-presenting cells of the innate immune system.<sup>6,7</sup>

GA is approved as a 20mg daily subcutaneous (sc) injection.<sup>5</sup> Three randomized, double-blind, placebo-controlled studies with this dosing regimen and a meta-analysis of those studies demonstrated reduced annualized relapse rates (ARRs) and disease activity on MRI in patients with RRMS.<sup>8–11</sup> In a subsequent phase 3 study, GA 20mg significantly delayed progression to clinically definite MS and reduced MRI disease activity in patients with clinically isolated syndromes.<sup>12</sup>

A recent phase 3 dose comparison study of GA 40mg once daily in patients with RRMS showed similar safety and efficacy profiles compared with the 20mg, once-daily approved dose.<sup>13</sup> Two randomized exploratory studies have compared GA 20mg sc daily to GA 20mg sc administered on alternate days or twice weekly for 2 years.<sup>14,15</sup> Both studies showed no significant difference in the ARR and brain MRI T2 lesion volume between the alternate GA dosing regimens compared to daily GA. However, less frequent weekly administration of GA showed significantly fewer localized injection reactions including lipoatrophy compared to daily GA.<sup>14,15</sup> The GALA (Glatiramer Acetate Low-frequency Administration) study was designed to investigate the efficacy and safety of GA 40mg administered 3× weekly (tiw) in patients with RRMS. This dosing regimen would provide the convenience of fewer weekly injections while maintaining a similar weekly dose as the approved 20mg regimen.

## Patients and Methods

### Study Design and Patients

The GALA study was a randomized, placebo-controlled (PC), parallel-group, phase 3 study. It was conducted at 142 sites in 17 countries, including the United States, Bulgaria, Croatia, Germany, Poland, Romania, and Ukraine.

Patient eligibility criteria were previously described.<sup>13</sup> Briefly, patients were eligible for study participation if they were 18 to 55 years of age, had a confirmed RRMS diagnosis (according to the revised McDonald criteria<sup>16</sup>), had an Expanded Disability Status Scale (EDSS) score of  $\leq 5.5$ , and were relapse-free for  $\geq 30$  days. Patients also were required to have  $\geq 1$  documented relapse in the 12 months prior to screening,  $\geq 2$  documented relapses in the 24 months prior to screening, or 1 documented relapse between 12 and 24 months prior to screening with at least 1 documented T1 gadolinium (Gd)-enhancing lesion in an MRI performed within 12 months of screening. Women of childbearing potential were required to practice an acceptable method of birth control.

Patients with progressive forms of MS and previous treatment with GA or any other glatiramoid were excluded. Other exclusion criteria included treatment with immunomodulators,

including interferon- $\beta$  and intravenous immunoglobulin, within 2 months of screening; use of immunosuppressive agents, including mitoxantrone and fingolimod, cytotoxic agents, or chronic ( $>30$  days) systemic corticosteroid treatment within 6 months of screening; treatment with cladribine, natalizumab, or any other monoclonal antibody treatment within 2 years of screening; known sensitivity to Gd or mannitol; and inability to successfully undergo MRI scanning.

All institutional review boards or ethics committees of the participating centers approved the protocol, and all patients gave written informed consent before any study-related procedures were performed. Study progress was overseen by an independent data-monitoring committee.

### Randomization and Blinding

Patients were treated with a tiw sc injection of either a single-use, prefilled syringe containing GA 40mg (Teva Pharmaceutical Industries, Petah Tikva, Israel) in a 1ml suspension containing 40mg of mannitol dissolved in water, or matching placebo (40mg of mannitol dissolved in water). During the randomization period, eligible patients were assigned to treatment groups in a 2:1 ratio (GA 40mg tiw or placebo) according to the randomization scheme produced by the study sponsor (Teva Pharmaceuticals). The randomization scheme used constrained blocks stratified by center.

The investigators, the sponsor, and any personnel involved in patients' assessments, monitoring, analysis, and data management were blinded to treatment assignment. Study drugs were packaged and labeled in a way that maintained the masked nature of the study; the appearance, shape, color, and smell were identical. Patients' general medical assessments were performed separately from the neurological assessments by 2 neurologists or physicians. The examining neurologist/physician was responsible for all neurological assessments.

Seven scheduled site visits occurred during the 12-month PC phase: at screening, baseline, and months 1, 3, 6, 9, and 12. Patients who completed the PC phase were given the opportunity to participate in an open-label phase, during which they would continue treatment with GA 40mg tiw until either the dose formulation is commercially available for the treatment of RRMS or development is stopped by the sponsor. The open-label phase is ongoing.

### Procedures

A complete neurological assessment, including Kurtzke's EDSS and functional system (FS) assessment, was performed at screening, baseline, and months 3, 6, 9, and 12. Patients were instructed to contact their local center within 48 hours of onset of any symptoms suggestive of relapse. Patients with suspected relapses were evaluated within 7 days of symptom onset.

Relapse was defined as the appearance of  $\geq 1$  new neurological abnormalities or the reappearance of  $\geq 1$  previously observed neurological abnormalities lasting at least 48 hours and preceded by an improving neurological state of at least 30 days from the onset of previous relapse. An event was counted as a relapse when the patient's symptoms were accompanied by

**TABLE 1. Baseline Patient and Disease Characteristics<sup>a</sup>**

ITT Population	GA 40mg tiw, n = 943	Placebo, n = 461
Age, mean yr ( $\pm$ SD)	37.4 (9.4)	38.1 (9.2)
Female gender, No. [%]	641 [68.0]	313 [67.9]
Race/ethnicity, No. [%]		
Caucasian	916 [97.1]	455 [98.7]
Black/African American	12 [1.3]	3 [0.7]
Asian	2 [0.2]	0 [0.0]
Native American/Alaskan Native	1 [0.1]	0 [0.0]
Body mass index, mean ( $\pm$ SD)	24.4 (4.7)	24.4 (4.8)
Prior DMT treatment, No. [%]	128 [13.6]	63 [13.7]
EDSS, mean ( $\pm$ SD)	2.8 (1.2)	2.7 (1.2)
Years from onset of first MS symptoms, mean ( $\pm$ SD)	7.7 (6.7)	7.6 (6.4)
Exacerbations over 1 year prior to study initiation, mean ( $\pm$ SD)	1.3 (0.6)	1.3 (0.6)
Exacerbations over 2 years prior to study initiation, mean ( $\pm$ SD)	1.9 (0.9)	1.9 (0.9)
Number of GdE T1 lesions, mean ( $\pm$ SD)	1.7 (4.7)	1.4 (3.7)
Patients with >0 GdE T1 lesions, No. [%]	336 [35.6]	154 [33.4]
Volume of T2 lesion, mean ml ( $\pm$ SD)	19.7 (20.7)	17.4 (17.4)

<sup>a</sup>No significant differences between the 2 groups at baseline.

DMT = disease-modifying therapy; EDSS = Expanded Disability Status Scale; GA = glatiramer acetate; GdE = gadolinium-enhancing; ITT = intent-to-treat; MS = multiple sclerosis; SD = standard deviation; tiw = 3 $\times$  weekly.

observed objective neurological changes consistent with an increase of  $\geq 0.5$  points in the EDSS score compared with previous evaluation, or an increase of 1 grade in the actual score of  $\geq 2$  or more of the 7 FSs; or an increase of 2 grades in the score of 1 FS, compared with the previous assessment. The patient must not have had any acute metabolic changes, and a change in bowel/bladder function or cognitive function must not have been entirely responsible for confirmation of a relapse.

The treatment of relapses was determined by the examining neurologist, and the per-protocol allowed treatment consisted of intravenous methylprednisolone, 1g/day for 5 days. In addition to neurological assessment at the next scheduled visit, follow-up visits to monitor the course of the relapse were made at the discretion of the treating neurologist. All follow-up neurological examinations were performed by the blinded examining neurologist.

Brain MRI assessments were performed at baseline, and months 6 and 12. Before scanning study participants, MRI facilities underwent a qualification procedure to ensure that image acquisition was optimized and standardized per protocol, for measuring the endpoints specified by the study protocol. The MRI protocol included dual echo T2-weighted image (WI), 3-dimensional inversion recovery spoiled-gradient recalled T1-WI, fluid attenuated inversion recovery, and spin-echo T1-WI with and without Gd contrast. Brain MRI scans were obtained according to a protocol provided by the MRI reading

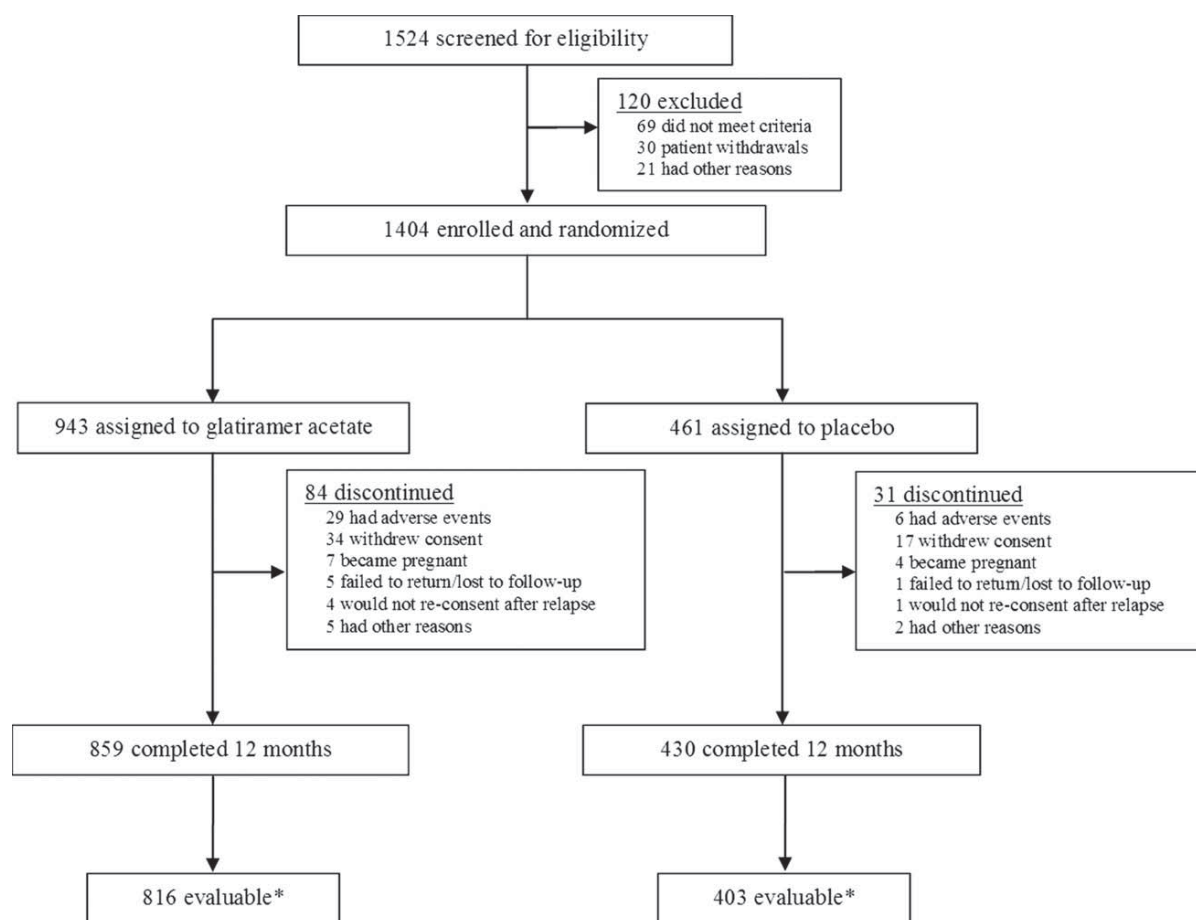
center (Buffalo Neuroimaging Analysis Center, Buffalo, NY) that also performed all MRI analysis. The details of the MRI procedures are provided in the Supplementary Material.

Safety assessments included adverse events (AEs), standard clinical laboratory tests, vital signs, and electrocardiographic (ECG) measurements.

### Statistical Analysis

A sample size of 1,350 patients (900 patients in the GA treatment group and 450 in the placebo group) was considered necessary to provide 90% power to detect a statistically significant difference in the total number of confirmed relapses between the treatment groups. The calculation accounted for an expected ARR of 0.35 in an untreated population, an expected ARR of  $\leq 0.245$  in the GA-treated population, and a dropout rate of 15%.

The principal analysis for the primary endpoint of total number of confirmed relapses during the 12-month PC phase was performed on the intent-to-treat (ITT) cohort, defined as all randomized patients. The GA group was compared with the placebo group using a baseline-adjusted quasi-likelihood (overdispersed) negative binomial regression analysis with an offset based on the log of the patient's exposure to treatment. In addition to treatment group, the negative binomial regression model included the following covariates: baseline EDSS score, log of



\*Evaluable patients completed the study without major protocol violations.

FIGURE 1: Patient disposition.

the number of relapses in the previous 2 years, volume of T2 lesions at baseline, status of Gd-enhancing T1 activity at baseline, and country or geographical region.

Significance testing of the prospectively defined secondary endpoints and their hierarchical order was predefined in the protocol. All secondary analyses were performed on the ITT population where data were available. The first 2 secondary endpoints, the cumulative number of new/newly enlarging T2 lesions at months 6 and 12 and the cumulative number of Gd-enhancing lesions on T1-WI taken at months 6 and 12, were analyzed using a baseline-adjusted negative binomial regression, with an offset employing the log of the proportion of the number of available postbaseline scans to adjust for missing scans. Patients who missed both 6- and 12-month scans were excluded from the analysis. The regression model included the number of Gd-enhancing lesions on T1-WI at baseline, and country or geographical region as covariates. The third endpoint, brain atrophy—defined as the percentage brain volume change from baseline to month 12—was analyzed using a baseline-adjusted analysis of covariance, with normalized brain volume at baseline, the number of Gd-enhancing lesions on T1-WI at baseline, and country or geographical region as

covariates. Patients who missed brain volume measurements at 12 months were excluded from the analysis.

Exploratory endpoints included the time to the first confirmed relapse, the proportion of relapse-free patients, and the total number of severe confirmed relapses (defined as those requiring hospitalization or intravenous steroids). All exploratory analyses were performed on the ITT population during the PC phase. The time to the first confirmed relapse for the GA group versus the placebo group was compared using Cox's proportional hazards model. Censoring time was defined as the time from randomization until the PC phase termination date. In several cases, the PC phase termination date exceeded the study drug stop date. Baseline-adjusted logistic regression was used to analyze the proportion of relapse-free patients. Baseline-adjusted quasi-likelihood negative binomial regression with an offset based on the log of the patient's exposure to treatment was used to analyze the total number of severe relapses. Covariates included in all 3 exploratory models were baseline EDSS score, log of the number of relapses over the previous 2 years, volume of T2 lesions at baseline, status of Gd-enhancing T1 activity at baseline (0 if no lesions and 1 if lesions present), and country or geographical region.

**TABLE 2. Annualized Relapse Rate/Severe Relapse Rate, Time to First Relapse, and Proportion of Relapse-Free Subjects**

Endpoint	Analysis Estimate (95% CI)				
	GA 40mg tiw, n = 943	Placebo, n = 461	RR, GA vs placebo	<i>p</i>	RRR, GA vs placebo
Primary					
Annualized relapse rate	0.331 (0.280–0.392)	0.505 (0.418–0.609)	0.656 (0.539–0.799)	<0.0001	34.0%
Exploratory					
Annualized severe relapse rate	0.301 (0.252–0.359)	0.466 (0.383–0.568)	0.644 (0.526–0.790)	<0.0001	35.4%
Time to first relapse, days	393	377	0.606 <sup>a</sup> (0.493–0.744)	<0.0001	NA
Relapse-free patients, %	77.0	65.5	1.928 <sup>b</sup> (1.491–2.494)	<0.0001	NA

<sup>a</sup>Hazard ratio.  
<sup>b</sup>Odds ratio.  
CI = confidence interval; GA = glatiramer acetate; NA = not applicable; RR = risk ratio; RRR = relative risk reduction; tiw = 3× weekly.

Each of the exploratory endpoints was analyzed at a nominal significance level of 5%. As the exploratory endpoints were not part of the primary and secondary objectives, this did not affect the study's overall type I error.

## Results

In total, 1,524 patients were screened for entry into the study (Fig). Of these patients, 1,404 were

randomized to study treatment (GA 40mg tiw, n = 943; placebo, n = 461) and received at least 1 dose of treatment. Baseline demographics showed no significant differences between the 2 groups (Table 1). The majority of screening failures occurred because of study ineligibility (4.5%) and consent withdrawal (2.0%). The proportions of patients who discontinued were similar for the GA 40mg tiw (8.9%) and placebo (6.7%) groups. The

**TABLE 3. Secondary Magnetic Resonance Imaging Endpoints**

Endpoint	Analysis Estimate (95% CI)				
	GA 40mg tiw, n = 884 <sup>a</sup>	Placebo, n = 441 <sup>a</sup>	RR, GA vs placebo	<i>p</i>	RRR, GA vs placebo
Cumulative GdE T1 lesions at months 6 and 12	0.905 (0.750 to 1.093)	1.639 (1.300 to 2.066)	0.552 (0.436 to 0.699)	<0.0001	44.8%
Cumulative new or newly enlarging T2 lesions at months 6 and 12	3.650 (3.176 to 4.194)	5.592 (4.710 to 6.640)	0.653 (0.546 to 0.780)	<0.0001	34.7%
Percentage change in brain volume from baseline to month 12	-0.706 (-0.779 to -0.632)	-0.645 (-0.737 to -0.553)	-0.061 (-0.154 to 0.033)	0.2058	+9.4%

<sup>a</sup>For change in brain volume from baseline to month 12, n = 840 for GA 40mg tiw and n = 423 for placebo.  
CI = confidence interval; GA = glatiramer acetate; GdE = gadolinium-enhancing; RR = risk ratio; RRR = relative risk reduction; tiw = 3× weekly.

# Explore Litigation Insights

Docket Alarm provides insights to develop a more informed litigation strategy and the peace of mind of knowing you're on top of things.

## Real-Time Litigation Alerts



Keep your litigation team up-to-date with **real-time alerts** and advanced team management tools built for the enterprise, all while greatly reducing PACER spend.

Our comprehensive service means we can handle Federal, State, and Administrative courts across the country.

## Advanced Docket Research



With over 230 million records, Docket Alarm's cloud-native docket research platform finds what other services can't. Coverage includes Federal, State, plus PTAB, TTAB, ITC and NLRB decisions, all in one place.

Identify arguments that have been successful in the past with full text, pinpoint searching. Link to case law cited within any court document via Fastcase.

## Analytics At Your Fingertips



Learn what happened the last time a particular judge, opposing counsel or company faced cases similar to yours.

Advanced out-of-the-box PTAB and TTAB analytics are always at your fingertips.

## API

Docket Alarm offers a powerful API (application programming interface) to developers that want to integrate case filings into their apps.

## LAW FIRMS

Build custom dashboards for your attorneys and clients with live data direct from the court.

Automate many repetitive legal tasks like conflict checks, document management, and marketing.

## FINANCIAL INSTITUTIONS

Litigation and bankruptcy checks for companies and debtors.

## E-DISCOVERY AND LEGAL VENDORS

Sync your system to PACER to automate legal marketing.