

Glatiramer acetate-specific T cells in the brain express T helper 2/3 cytokines and brain-derived neurotrophic factor *in situ*

Rina Aharoni*, Basak Kayhan*, Raya Eilam[†], Michael Sela**[‡], and Ruth Arnon*

Departments of *Immunology and [†]Veterans Resources, The Weizmann Institute, Rehovot 76100, Israel

Contributed by Michael Sela, September 25, 2003

The ability of a remedy to modulate the pathological process in the target organ is crucial for its therapeutic activity. Glatiramer acetate (GA, Copaxone, Copolymer 1), a drug approved for the treatment of multiple sclerosis, induces regulatory T helper 2/3 cells that penetrate the CNS. Here we investigated whether these GA-specific T cells can function as suppressor cells with therapeutic potential in the target organ by *in situ* expression of T helper 2/3 cytokines and neurotrophic factors. GA-specific cells and their *in situ* expression were detected on the level of whole-brain tissue by using a two-stage double-labeling system: (i) labeling of the GA-specific T cells, followed by their adoptive transfer, and (ii) detection of the secreted factors in the brain by immunohistological methods. GA-specific T cells in the CNS demonstrated intense expression of the brain-derived neurotrophic factor and of two antiinflammatory cytokines, IL-10 and transforming growth factor β . No expression of the inflammatory cytokine IFN- γ was observed. This pattern of expression was manifested in brains of normal and experimental autoimmune encephalomyelitis-induced mice to which GA-specific cells were adoptively transferred, but not in control mice. Furthermore, infiltration of GA-induced cells to the brain resulted in bystander expression of IL-10 and transforming growth factor β by resident astrocytes and microglia. The ability of infiltrating GA-specific cells to express antiinflammatory cytokines and neurotrophic factor in the organ in which the pathological processes occur correlates directly with the therapeutic activity of GA in experimental autoimmune encephalomyelitis/multiple sclerosis.

Neurotrophic factors and antiinflammatory cytokines have been shown to play a crucial role in the modulation of multiple sclerosis (MS) and its experimental model, experimental autoimmune encephalomyelitis (EAE) (1–3). Yet, the information available on their expression within the CNS is limited. Various current therapies for MS attempt to interfere with the pathological processes by immune intervention and up-regulation of these regulatory substances. However, whereas the peripheral effect of these treatments has been extensively studied, little information exists on their effect in the target organ, namely the brain. The study of CNS diseases is particularly complicated, because the accessibility of immune factors and regulatory cells is strictly controlled by the blood–brain barrier, constituting a distinct and unique microenvironment.

Glatiramer acetate (GA, Copaxone, Copolymer 1), a drug approved for the treatment of MS, exerts a marked suppressive effect on EAE induced by various encephalitogens in several species (4). We previously demonstrated that the therapeutic effect of GA is mediated by regulatory cells that suppress disease and secrete high amounts of antiinflammatory T helper (Th) 2/3 cytokines (5). These GA-induced suppressor cells crossreact with the autoantigen myelin basic protein by secreting Th2/3 cytokines and induce bystander suppression of processes mediated by other encephalitogens (6). GA-specific Th2/3 cells have been found in the periphery, in the spleens and lymph nodes of experimental animals, and in peripheral blood mononuclear cells of humans treated with GA, suggesting that these cells are

involved in the therapeutic effect induced by GA on MS as well (5–7). Furthermore, we have recently demonstrated that GA-specific regulatory cells, induced in the periphery either by injection or by oral treatment with GA, pass the blood–brain barrier and accumulate in the CNS. This finding was manifested by their isolation from brains of actively sensitized GA-treated mice and by localization of GA-specific cells in the brain after their passive transfer to the periphery (8, 9).

Although the presence of GA-specific Th2 cells in the CNS was confirmed, their ability to actually secrete Th2 cytokines and induce therapeutic effect *in situ* has not been verified. Some reservation concerning the capability of T cells to secrete Th2 cytokines in the CNS was raised after finding that the CNS environment induces bias toward the Th1 pathway and that myelin basic protein-specific Th2 cells can aggravate EAE (6, 10). It was therefore essential to elucidate whether the GA-specific cells accumulating in the brain actually function as suppressor cells in the diseased organ and secrete antiinflammatory cytokines *in situ*.

It was recently demonstrated that GA-specific cells of both mouse and human origin also secrete the potent brain-derived neurotrophic factor (BDNF) (3, 11), which induces axonal outgrowth, remyelination, regeneration, and rescue of degenerating neurons (12, 13). Yet, this BDNF secretion was found only in peripheral T cell lines *in vitro* and not in the target organ. BDNF expression by GA-specific cells in the CNS may indicate that GA activity is not restricted to antiinflammatory effect but generates actual neuroprotection and regeneration processes as well. In this study, we investigated whether GA-induced T cells that penetrate the brain do function as regulatory cells by producing Th2/3 cytokines and neurotrophic factor. We wish to report that, indeed, the cytokines IL-10, transforming growth factor β (TGF- β), and BDNF are expressed by GA-induced cells *in situ*.

Materials and Methods

Mice. (SJL/JxBALB/c)F1 female mice, 10–16 weeks old, were purchased from The Jackson Laboratory.

Glatiramer Acetate. GA consists of acetate salts of synthetic polypeptides, containing four amino acids: L-alanine, L-glutamate, L-lysine, and L-tyrosine (4). GA from batch no. 242990599, with an average molecular weight of 7,300, was obtained from Teva Pharmaceutical Industries (Petach Tikva, Israel) and used throughout the study.

T Cells. GA-specific cells from two T cell lines established from spleens of mice that had received daily injections (2 mg/day, 10

Abbreviations: GA, glatiramer acetate; BDNF, brain-derived neurotrophic factor; TGF- β , transforming growth factor β ; MS, multiple sclerosis; EAE, experimental autoimmune encephalomyelitis; GFAP, glial fibrillary acidic protein; Th, T helper.

[‡]To whom correspondence should be addressed. E-mail: michael.sela@weizmann.ac.il.

© 2003 by The National Academy of Sciences of the USA

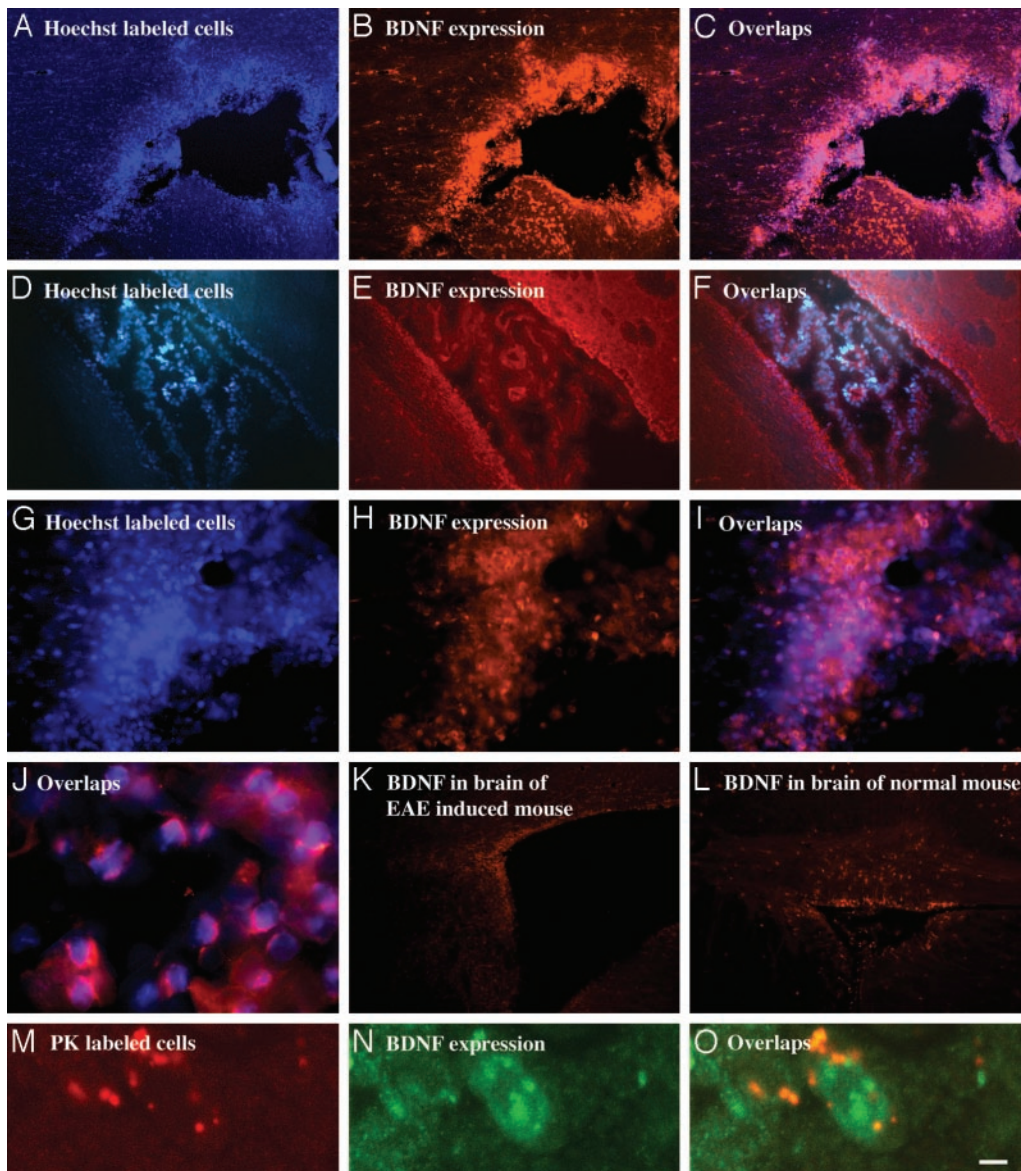


Fig. 1. Immunohistochemical analysis of BDNF expression by GA-specific cells in the brain. Activated labeled GA-specific cells were injected into the peritoneum of either EAE-induced (A–C, G–I, and M–O) or normal (D–F) mice. After 7 days, the mice were perfused and brain sections (20 μm) were stained immunocytochemically for BDNF expression. (A–C) Area surrounding the lateral ventricle. (D–F) Choroid plexus in the lateral ventricle. (G–I) Perivascular infiltration in the cortex. (J) Overlap image of enlarged Hoechst-labeled, GA-specific cells and their BDNF secretion in the cortex. (M–O) Enlarged images of single GA-specific PK-labeled cells in the cortex. Controls demonstrate BDNF expression in corresponding brain regions of an EAE-induced mouse (K) and a normal mouse (L). (Scale bar: A–F, K, and L, 100 μm ; G–I, 20 μm ; J and M–O, 10 μm .)

injections) or had been fed (250 $\mu\text{g}/\text{day}$, eight feedings) with GA, respectively, were used throughout this study. Cells were selected *in vitro* by repeating exposures to GA (50 $\mu\text{g}/\text{ml}$) on irradiated spleen cells, followed by propagation in T cell growth factor medium. These cells had been characterized as Th2 regulatory cells that can suppress EAE *in vivo* (5, 6).

T Cell Labeling. GA-specific cells were stained either by Hoechst 33342-blue fluorescent (Molecular Probes) or by PKH26-red fluorescent (Sigma), which incorporate to the cell nucleus or to the cell membrane, respectively, according to the manufacturer's instructions. Both staining methods did not interfere essentially with the biological activity of the cells, as demonstrated by the comparison of the proliferation and cytokine secretion of labeled cells to unlabeled cells and by the ability of the labeled cells to prevent EAE.

Adoptive Transfer. Activated prelabeled GA-specific T cells (30×10^6 per mouse) were injected into the peritoneum of either normal or EAE-induced mice 3 days after disease induction by whole spinal cord homogenate (5 mg in complete Freund's adjuvant) and pertussis toxin injection (0.2 μg per mouse). Brains were excised 7 days after cell injection because our previous studies indicated that this time is optimal for the accumulation of GA-specific cells, in contrast to nonspecific controls (8, 9).

Immunocytochemistry. Control EAE-induced mice injected with GA-specific T cells and normal mice were anesthetized and perfused with 2.5% paraformaldehyde. Brains were sectioned (20 μm) by cryostat or sliding microtome. Sections were preincubated in PBS with 20% horse serum and 0.05% Saponin (Sigma) for 1 h, then incubated overnight with the following primary antibodies: chicken

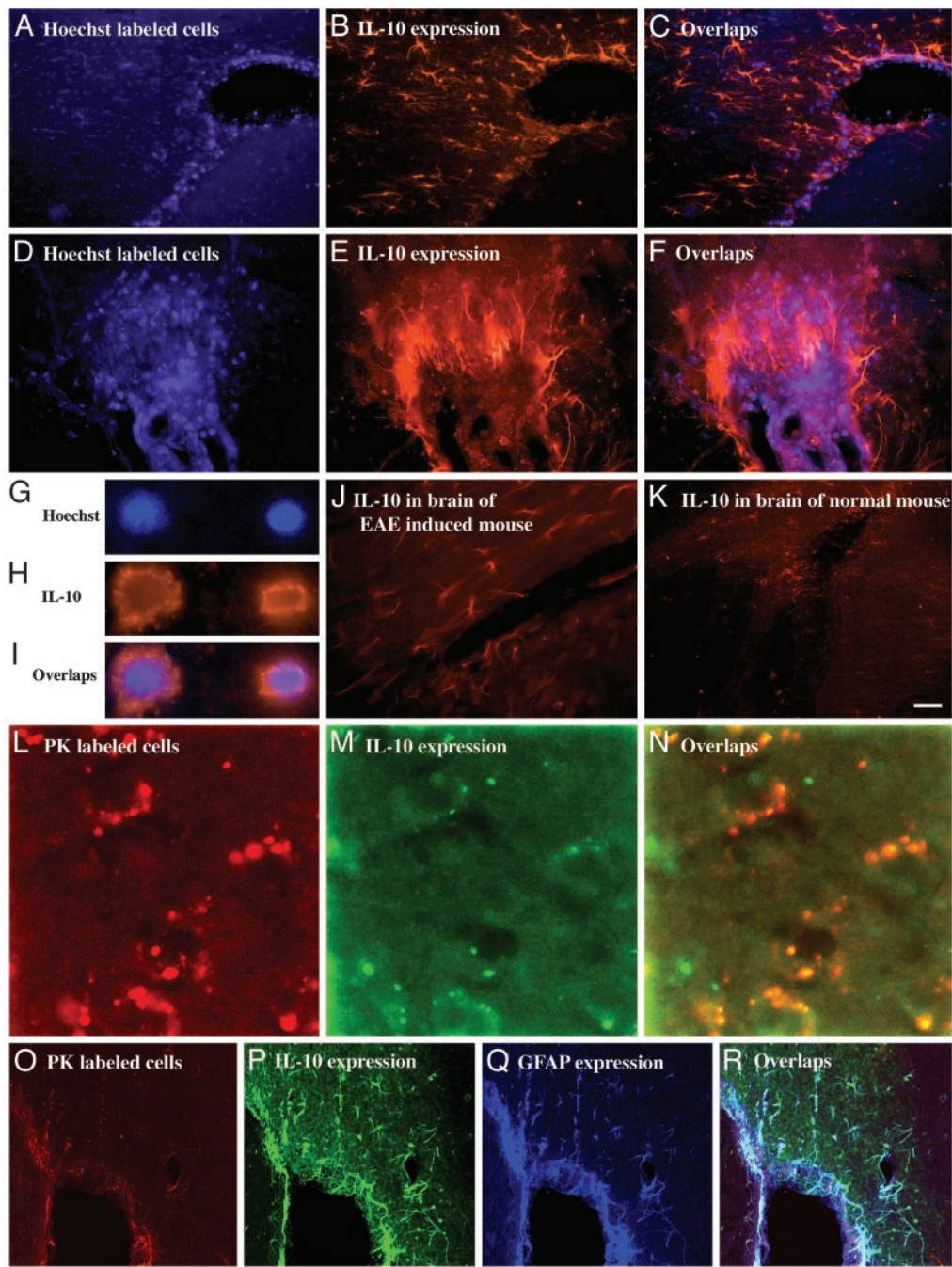


Fig. 2. Immunohistochemical analysis of IL-10 expression by GA-specific cells in brains of EAE-induced mice. (A–F) Perivascular infiltration in the thalamus. (G–I) Enlarged images of single cells in the thalamus. (L–N) Single cells in the cortex. (O–R) Nonoverlapping distribution of IL-10-expressing, GA-labeled cells and additional population of cells expressing IL-10 and GFAP in tissue surrounding the lateral ventricle. Controls demonstrate IL-10 expression in corresponding brain regions of an EAE-induced mouse (J) and a normal mouse (K). (Scale bar: A–C, 50 μm ; D–F, 20 μm ; G–I and L–N, 10 μm ; J, K, and O–R, 100 μm .)

anti-BDNF (Promega), goat anti-IL-10 (Santa Cruz Biotechnology), rabbit anti-TGF- β (Santa Cruz Biotechnology), rat anti-IFN- γ (BioSource International, Camarillo, CA), or mouse anti-glial fibrillary acidic protein (GFAP; Pharmingen), 1–10 $\mu\text{g}/\text{ml}$, diluted in PBS with 2% horse serum and 0.05% saponin. The second antibody step was performed by labeling with Cy2- or Cy3-conjugated donkey anti-chicken, donkey anti-goat, donkey anti-rabbit, donkey anti-rat, or donkey anti-mouse (Jackson ImmunoResearch), 1:250, for 20 min. Additional controls were incubated with secondary antibody alone. Slides of Hoechst-labeled cells were examined by fluorescence microscope (Nikon Eclipse E600). Slides

of PKH26-labeled cells were examined by confocal microscope (Axiocvert 100M, Zeiss). Photographs were taken by using SPOT software program. Images were processed with PHOTOSHOP (Adobe Systems, Mountain View, CA). Most photographs presented are from EAE-induced mice injected with prelabeled GA-specific cells.

Results

The Presence of Fluorescent-Labeled Adoptively Transferred GA-Specific T Cells in the Brain. Abundance of fluorescently prelabeled GA-specific cells was observed in brain sections with adoptively transferred GA-specific T cells in normal mice and particularly

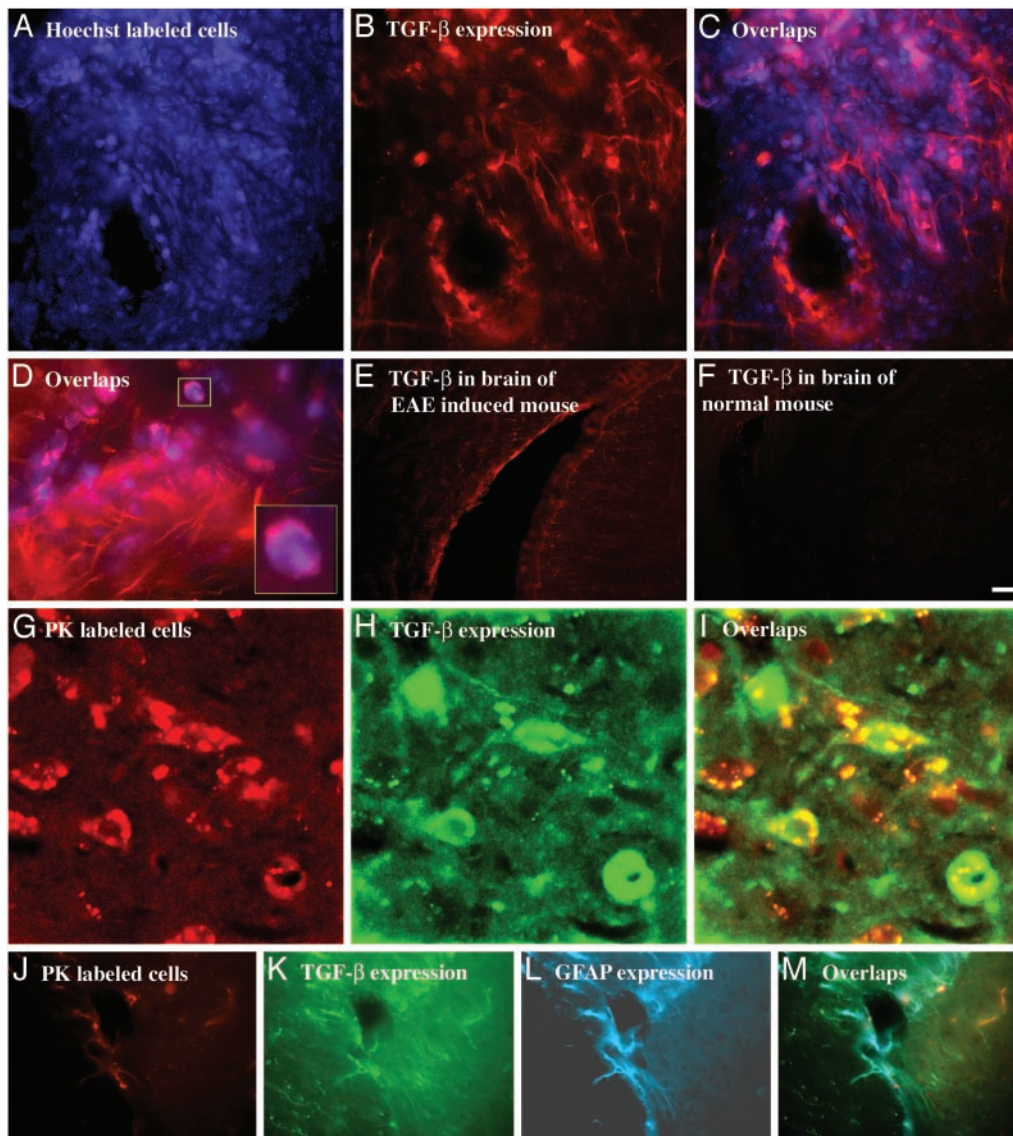


Fig. 3. Immunohistochemical analysis of TGF- β expression by GA-specific cells in brains of EAE-induced mice. (A–D) Perivascular infiltration in the cortex. (G–I) 3D reconstruction of PK-labeled cells in the thalamus by confocal scanning microscope. (J–M) Nonoverlapping distribution of TGF- β -expressing GA-labeled cells and additional population of cells expressing TGF- β and GFAP in tissue surrounding a blood vessel. Controls demonstrate TGF- β in corresponding brain region of an EAE-induced mouse (E) and a normal mouse (F) in the cortex. (Scale bar: A–C, 50 μ m; D, 20 μ m; E, F, and M–P, 100 μ m; G–L, 10 μ m.)

in brains of EAE-induced mice 7 days after their injection to the periphery. The GA-specific cells were visible in the ventricles, in particular, in the choroid plexus (Fig. 1D) and in the tissue surrounding the ventricles (Fig. 1A). Many clusters of cells were seen around blood vessels, indicating perivascular infiltration into the brain (Fig. 1G). Individual or clustered cells penetrated various regions of the brain, including the cortex, the thalamus, the basal ganglia, and the hippocampus. Brain sections, containing the penetrating fluorescently labeled GA-specific T cells and control brain sections from EAE-induced or normal mice were immunohistochemically stained for the expression of the neurotrophic factor BDNF, the Th2 cytokines IL-10 and TGF- β , and the Th1 cytokine IFN- γ . Images were taken from various regions of the thalamus and cortex, mainly from the laterodorsal thalamus nucleus, the ventral posteromedial thalamic nucleus, the ventral posterolateral thalamic nucleus, and the somatosensory cortex.

BDNF. As shown in Fig. 1, adoptively transferred GA-specific cells that had been accumulated in the brain (Fig. 1A, D, G, and M)

expressed BDNF *in situ* (Fig. 1B, E, H, and N). This finding was verified by colocalization of the corresponding fields (Fig. 1C, F, I, and O). Furthermore, staining of GA cells in the CNS by BDNF antibodies was also demonstrated on the single-cell level in Hoechst-labeled (Fig. 1J) and PK-labeled (Fig. 1M–O) cells. GA-specific cells expressing BDNF were observed in various regions of the brain, mainly in tissue surrounding the ventricles (Fig. 1A–C) and in perivascular cuffs (Fig. 1G–I). BDNF immunostaining localized both in the cytoplasm and in the membrane of the cells (Fig. 1J and N). In contrast to the strong BDNF expression in the brains containing GA-specific cells, only marginal BDNF staining was observed within the CNS of control EAE-induced (Fig. 1K) and in normal (Fig. 1L) mice into which no GA-specific cells were injected.

IL-10. Fig. 2 illustrates that GA-specific cells in the brain (Fig. 2A, D, and L) demonstrated intensive staining with anti-IL-10 antibodies (Fig. 2B, E, and M), as verified by colocalization of the corresponding fields (Fig. 2C, F, and N). This *in situ* IL-10

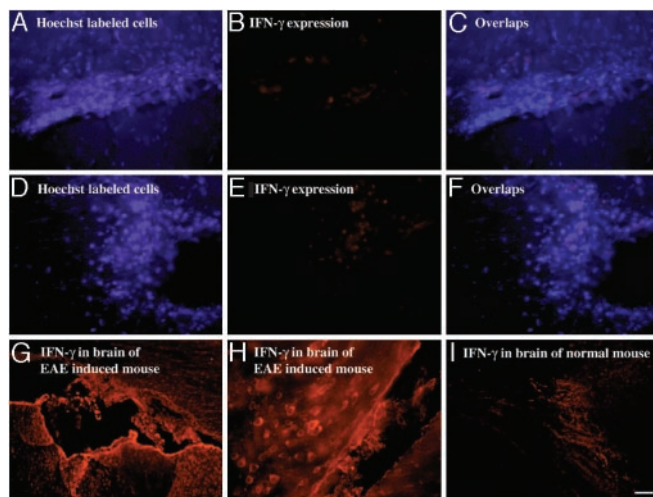


Fig. 4. Lack of expression of IFN- γ by GA-specific cells in the brain. Cells in the cortex of an EAE-induced mouse (A–C) and a normal mouse (D–F). Expression of IFN- γ in corresponding brain sections of controls: an EAE-induced mouse (G and H) and a normal mouse (I). (Scale bar: A–F and H, 40 μ m; G and I, 100 μ m.)

expression by GA cells was clearly demonstrated on a single-cell level in Hoechst-labeled (Fig. 2 G–I) and PK-labeled (Fig. 2 L–N) cells. IL-10 was expressed both in the cytoplasm and in the membrane of the cells (Fig. 2 H and M).

Clusters of GA-labeled cells expressing IL-10 were abundant in various regions throughout the brain. Moreover, unlabeled cells within and in the vicinity of these clusters also expressed high levels of IL-10 (Fig. 2 B, C, E, and F). These unlabeled IL-10-positive cells had elongated astrocyte-like morphology consistent with activated microglia. Triple staining of slides containing GA-specific cells (Fig. 2O) for IL-10 (Fig. 2P) and GFAP, a component of astrocyte filaments (Fig. 2Q), confirmed the astrocyte phenotype of these adjacent cells (Fig. 2R). Thus, IL-10 expression was evident not only in the labeled GA-specific cells that migrated to the brain but also in the surrounding resident CNS cells.

The intense IL-10 secretion was observed only in brains with adoptively transferred GA cells, whereas control mice expressed low to moderate IL-10 levels. IL-10 expression in brains of EAE-induced mice (Fig. 2J) was slightly higher than that observed in brains of normal mice (Fig. 2K). Moderate IL-10 expression appeared to be associated with areas of cellular infiltrated and perivascular cuffs.

TGF- β . A similar phenomenon was observed regarding TGF- β , as shown in Fig. 3. Adoptively transferred GA-specific cells in the brain manifested extensive TGF- β expression (Fig. 3 A–D and G–L), with strong cytoplasmatic and membranal staining of individual cells (Fig. 3 D and H). The staining pattern was similar to the pattern observed for IL-10, including the positive staining of surrounding elongated cells of astrocyte morphology, which was confirmed by triple labeling with GFAP (Fig. 3 J–M). These surrounding bystander resident cells displayed similar or even higher TGF- β expression intensity compared with the staining of the GA-specific cell population (Fig. 3D).

In contrast to the strong TGF- β secretion in brains with adoptively transferred GA cells, control mice expressed low to moderate TGF- β levels, which were higher in brains of EAE-induced mice (Fig. 3E) than in those of normal mice (Fig. 3F).

IFN- γ . The results presented hitherto pertain to the Th2-related cytokines. It was of interest to test the expression pattern of a Th1 cytokine such as IFN- γ . As shown in Fig. 4, GA-specific cells

that had been accumulated in the brain (Fig. 4 A and D) did not express IFN- γ *in situ* (Fig. 4 B and E). It was not possible to detect any IFN- γ in the brains of mice injected with GA-labeled cells, neither in EAE-induced (Fig. 4 A–C) nor in normal (Fig. 4 D–F) mice. On the other hand, intense staining for IFN- γ was found in corresponding brain regions of EAE-induced mice that were not injected with GA-specific cells (Fig. 4 G and H). This staining was much higher than that observed in normal mice (Fig. 4I).

Discussion

Immunomodulating therapies for CNS pathologies have been studied extensively and in clinical use for several years. However, the understanding of the pathway by which they actually operate in the target organ has lagged behind. Thus, neurotrophic factors and antiinflammatory cytokines are known to play a crucial role in MS and EAE modulation (1–3, 12–15), but information on their expression within the CNS is limited. In the present study we tested whether treatment with the MS drug GA results in secretion of neurotrophic factor and antiinflammatory cytokines *in situ* through specific Th2/3 cells that penetrate the brain. To trace the low amounts of factors secreted by a specific subset of T cells on the level of whole-brain tissue, we used the double-labeling approach in which prelabeled specific T cells were adoptively transferred and their cytokines/neurotrophic factor expression was subsequently immunohistologically detected.

As clearly demonstrated, GA-specific cells in the brain manifested intensive expression of the neurotrophic factor BDNF (Fig. 1) and of the two antiinflammatory cytokines, IL-10 (Fig. 2) and TGF- β (Fig. 3), but no trace of the inflammatory cytokine IFN- γ (Fig. 4). This expression was clearly verified on the single-cell level by labeling with two different dyes, i.e., Hoechst and PKH26, which incorporate into different cell loci (the nucleus and the membrane, respectively), indicating that these findings do not reflect an artifact caused by cell staining. It has been claimed that, because of its ability to bind cellular DNA, Hoechst labeling inhibits lymphocyte activity and interacts with bystander cells (16). We have not observed these phenomena, as demonstrated by the comparison of the proliferation and cytokine secretion of labeled cells with unlabeled cells and by the ability of the labeled cells to prevent EAE (8). Yet, to affirm staining specificity, we used, in addition, a vital labeling procedure by the membrane inserting dye PKH26. Parallel results were obtained with both staining methods.

BDNF, IL-10, and TGF- β manifested cytoplasmatic as well as membranal expression. Positively stained GA-specific cells were apparent in various regions throughout the brain, including the cortex, the thalamus, the basal ganglia, and the hippocampus, mainly in tissue surrounding the ventricles and in perivascular locations. They were found in brains of normal and EAE-induced mice after adoptive transfer of GA-specific cells. In both cases, staining intensity on a single-cell level looked similar. Yet, the total expression on the whole-tissue level was significantly higher in EAE-induced mice, because a great deal more GA-specific cells were present in the brains of those mice than in the brains of normal mice. The difference in cell infiltration could result from blood–brain barrier injury caused by the injection of pertussis toxin during EAE induction and from the destruction typical to the disease process. In any event, an extensive expression of these modulatory substances by GA-specific cells in the CNS was manifested during the pathological process. T cells from lines induced by oral immunization or by daily injections of GA demonstrated similar CNS penetration and expression patterns of all the factors tested.

Intense staining with BDNF, IL-10, and TGF- β antibodies was found only in brains of mice that had been injected with GA-specific cells. In control mice only faint staining was noted. It is of interest that BDNF staining in brains of EAE-induced

Explore Litigation Insights

Docket Alarm provides insights to develop a more informed litigation strategy and the peace of mind of knowing you're on top of things.

Real-Time Litigation Alerts



Keep your litigation team up-to-date with **real-time alerts** and advanced team management tools built for the enterprise, all while greatly reducing PACER spend.

Our comprehensive service means we can handle Federal, State, and Administrative courts across the country.

Advanced Docket Research



With over 230 million records, Docket Alarm's cloud-native docket research platform finds what other services can't. Coverage includes Federal, State, plus PTAB, TTAB, ITC and NLRB decisions, all in one place.

Identify arguments that have been successful in the past with full text, pinpoint searching. Link to case law cited within any court document via Fastcase.

Analytics At Your Fingertips



Learn what happened the last time a particular judge, opposing counsel or company faced cases similar to yours.

Advanced out-of-the-box PTAB and TTAB analytics are always at your fingertips.

API

Docket Alarm offers a powerful API (application programming interface) to developers that want to integrate case filings into their apps.

LAW FIRMS

Build custom dashboards for your attorneys and clients with live data direct from the court.

Automate many repetitive legal tasks like conflict checks, document management, and marketing.

FINANCIAL INSTITUTIONS

Litigation and bankruptcy checks for companies and debtors.

E-DISCOVERY AND LEGAL VENDORS

Sync your system to PACER to automate legal marketing.