

ARRIS Group, Inc.
and
Cox Communications, Inc.
v.
C-Cation Technologies, LLC

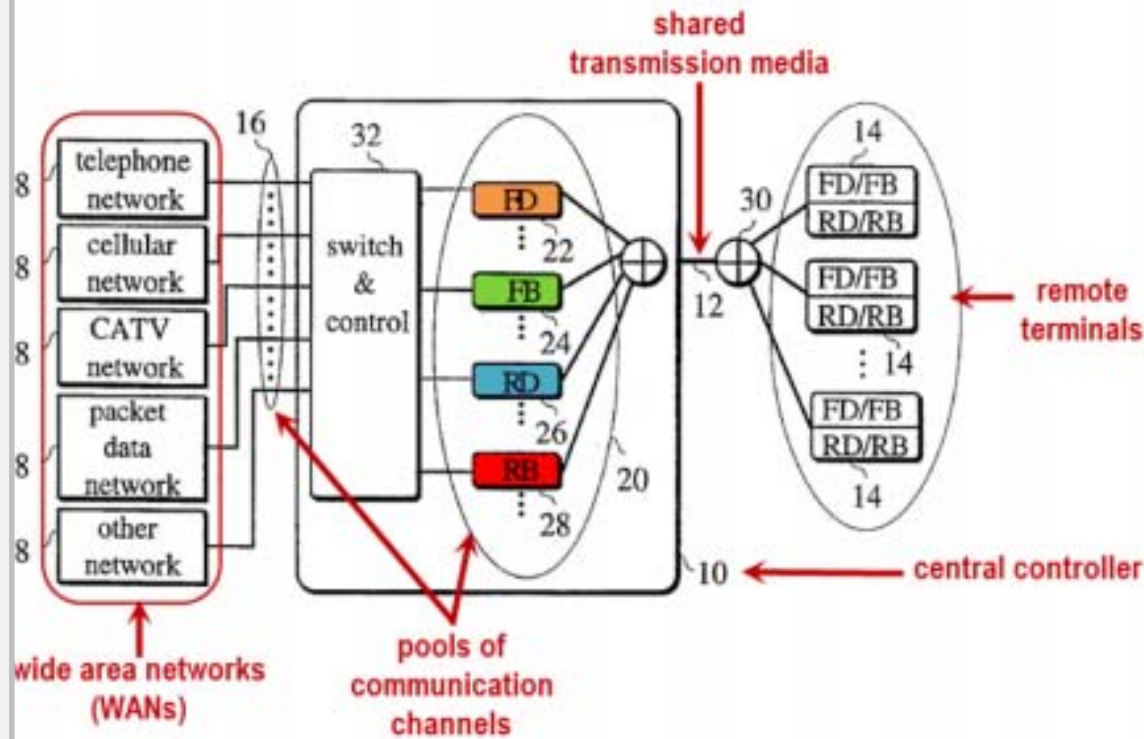
IPR2015-00635

Petitioners' Oral Hearing Demonstratives

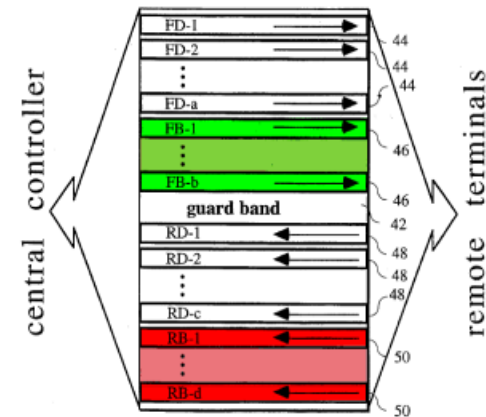
April 26, 2016



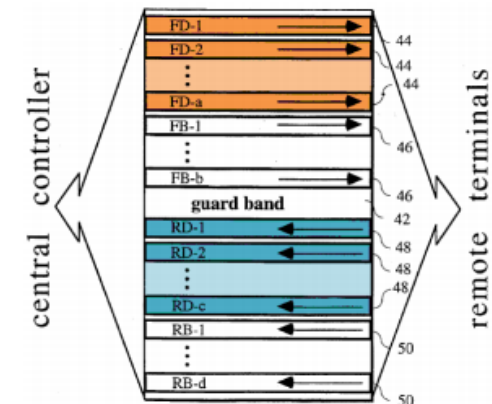
'883 Patent Overview



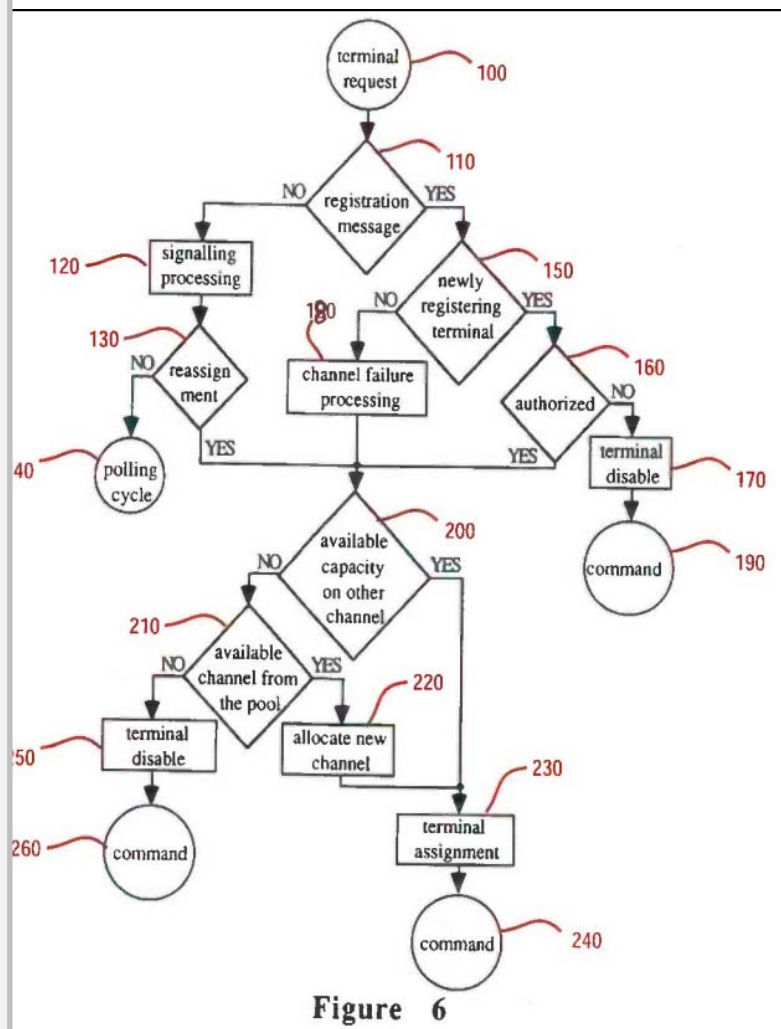
bearer channels



signalling data channels



'883 Patent Overview



Through the registration process, the central controller assigns the remote terminal to a group supported by coupling of the specific forward and reverse signalling data channels.

Ex. 1001, 3:47-50.

Through the registration process, the central controller assigns the remote terminal to a group corresponding to a specific set of signalling data channels.

Ex. 1001, 7:36-38.

If the signalling data channel is available, the central controller will complete the registration process by commanding the remote terminal to tune to the assigned channels.

Ex. 1001, 8:50-53.

'883 Patent, Claim 1

1. In a multiple access communication system comprising a central controller, a shared transmission means for signalling data and user information, and a plurality of remote terminals, a method of allocating signalling data channels between said central controller and said plurality of remote terminals from a plurality of communication channels and of assigning remote terminals comprising the steps of:

(a) establishing communications between said central controller and said plurality of remote terminals via a plurality of signalling data channels, each of said remote terminals being initially assigned to a pair of predetermined signalling data channels;

(b) monitoring the status of a plurality of the signalling data channels in use between said central controller and said plurality of remote terminals for the usability of said signalling data channels;

(c) determining whether one of said plurality of remote terminals needs to be reassigned to a different signalling data channel other than said predetermined signalling data channel;

(d) determining whether a different and suitable signalling data channel is available other than said predetermined channel; and

(e) reassigning by said central controller said remote terminal to a different and suitable signalling data channel for communication henceforward.

'883 Patent, Claim 3

3. In a multiple access communication system according to claim 1, said step of monitoring the status of a plurality of the signalling data channels in use between said central controller and said plurality of remote terminals for the usability of said signalling data channels comprising the steps of:

- (a) calculating the aggregate traffic load requirements of said plurality of signalling data channels in use;
- (b) monitoring the past collision count of said plurality of signalling data channels in use;
- (c) monitoring the transmission error count of said plurality of signalling data channels in use; and
- (d) sensing the status of said plurality of signalling data channels in use for failure.

Explore Litigation Insights

Docket Alarm provides insights to develop a more informed litigation strategy and the peace of mind of knowing you're on top of things.

Real-Time Litigation Alerts



Keep your litigation team up-to-date with **real-time alerts** and advanced team management tools built for the enterprise, all while greatly reducing PACER spend.

Our comprehensive service means we can handle Federal, State, and Administrative courts across the country.

Advanced Docket Research



With over 230 million records, Docket Alarm's cloud-native docket research platform finds what other services can't. Coverage includes Federal, State, plus PTAB, TTAB, ITC and NLRB decisions, all in one place.

Identify arguments that have been successful in the past with full text, pinpoint searching. Link to case law cited within any court document via Fastcase.

Analytics At Your Fingertips



Learn what happened the last time a particular judge, opposing counsel or company faced cases similar to yours.

Advanced out-of-the-box PTAB and TTAB analytics are always at your fingertips.

API

Docket Alarm offers a powerful API (application programming interface) to developers that want to integrate case filings into their apps.

LAW FIRMS

Build custom dashboards for your attorneys and clients with live data direct from the court.

Automate many repetitive legal tasks like conflict checks, document management, and marketing.

FINANCIAL INSTITUTIONS

Litigation and bankruptcy checks for companies and debtors.

E-DISCOVERY AND LEGAL VENDORS

Sync your system to PACER to automate legal marketing.