

[54] SEQUENTIAL COMPUTER NETWORK SHUTDOWN SYSTEM AND PROCESS THEREFOR

[57] ABSTRACT

[75] Inventors: Ronald L. Pitt, Escondido; Carleton H. Smith, San Diego, both of Calif.

A user configurable, rule based sequencing of the shutdown of individual devices or the entire computer network is forwarded to a collection of software programmed micro-processors operating on the network. Every required device of the system is provided with shutdown software and a conventional UPS (known variously as an uninterruptable power supply, uninterruptable power system, uninterrupted power supply, and uninterrupted power system). A user interface program is used by a system administrator to configure the operation of the shutdown software. In the preferred embodiment, the network system includes, at a minimum, a file server coupled to a storage device containing a database, a database server, and at least one database work station, such as used for accounting purposes. Shutdown software and a UPS are coupled or otherwise associated with each of the file server, the database server, the work station and, when used, the network communication device. The user interface program establishes the configuration process. The shutdown software establishes the shutdown process. The configuration process is installed to configure the system and to establish rules or a system administrator's plan. The software validates the rules for error and inconsistencies, such as may have been made by the administrator. If there are any errors and inconsistencies, the system administrator is so advised and corrections are recommended. If there are no errors or inconsistencies, the user interface program or software is permitted to communicate the system administrator's plan to all shutdown software running on the individual devices. The shutdown process follows the rules in the configuration process.

[73] Assignee: Deltec Electronics Corporation, San Diego, Calif.

[21] Appl. No.: 330,697

[22] Filed: Oct. 28, 1994

[51] Int. Cl.⁶ G06F 1/30; G06F 13/10

[52] U.S. Cl. 395/750; 395/182.22; 395/651

[58] Field of Search 395/750, 182.22, 395/650; 364/707

[56] References Cited

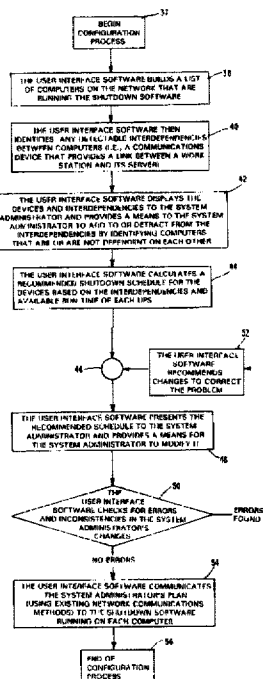
U.S. PATENT DOCUMENTS

4,495,568	1/1985	Gilbert et al.	395/182.2
4,611,289	9/1986	Coppola	364/492
4,663,539	5/1987	Sharp et al.	307/38
5,053,635	10/1991	West	307/67
5,117,324	5/1992	Johnson, Jr.	361/66
5,151,855	9/1992	Gray et al.	395/750
5,168,444	12/1992	Cukor et al.	364/401
5,287,515	2/1994	Murai	395/700
5,315,161	5/1994	Robinson et al.	307/66
5,317,752	5/1994	Jewett et al.	395/750
5,323,393	6/1994	Barrett et al.	370/85.8
5,381,554	1/1995	Langer et al.	395/750
5,483,656	1/1996	Oprescu et al.	395/750
5,542,035	7/1996	Kikinis et al.	395/750

Primary Examiner—Jack B. Harvey
 Assistant Examiner—Sumati Lefkowitz
 Attorney, Agent, or Firm—Lewis B. Sternfels

13 Claims, 4 Drawing Sheets

Microfiche Appendix Included
 (1544 Microfiche, 16 Pages)



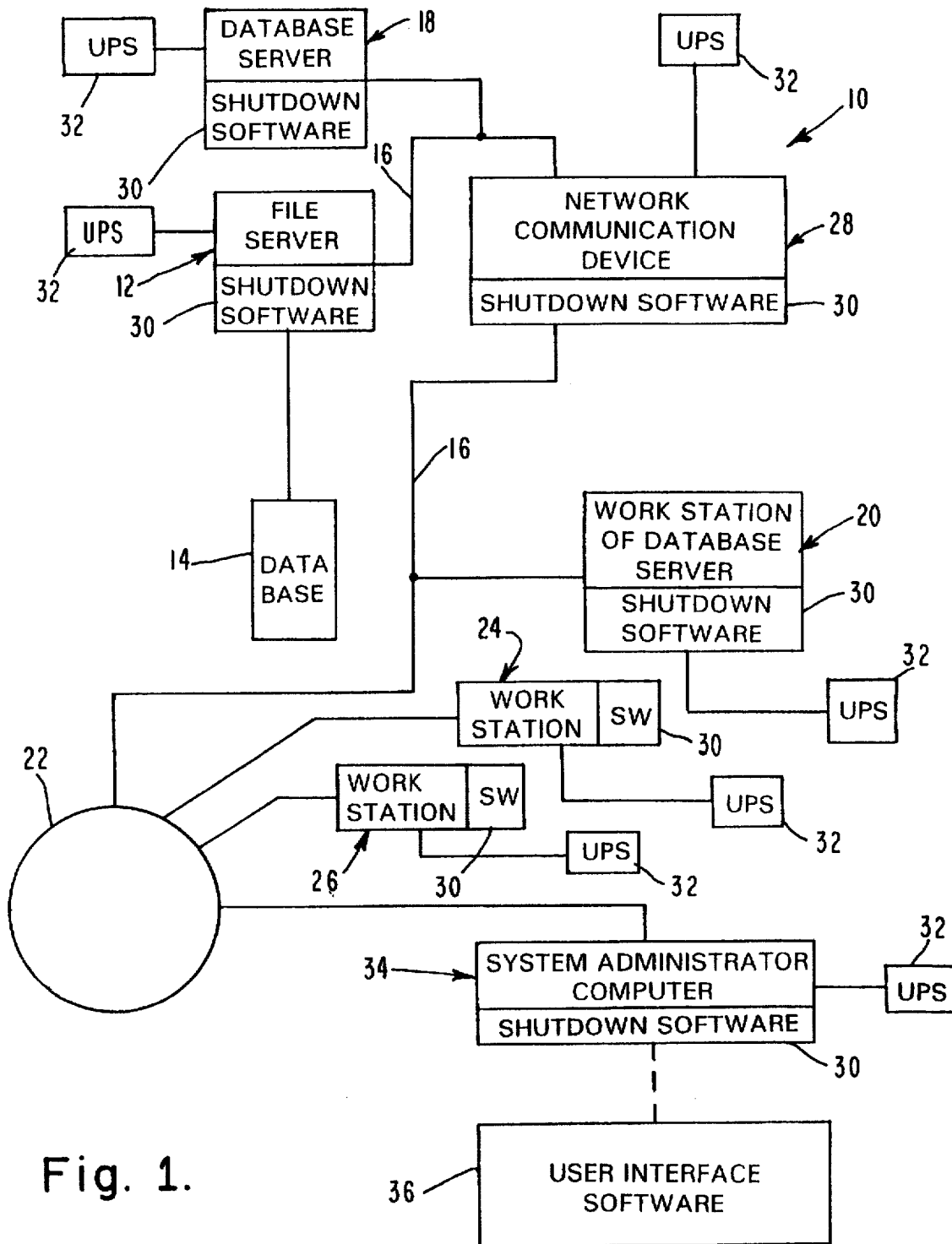


Fig. 1.

Fig. 2a.

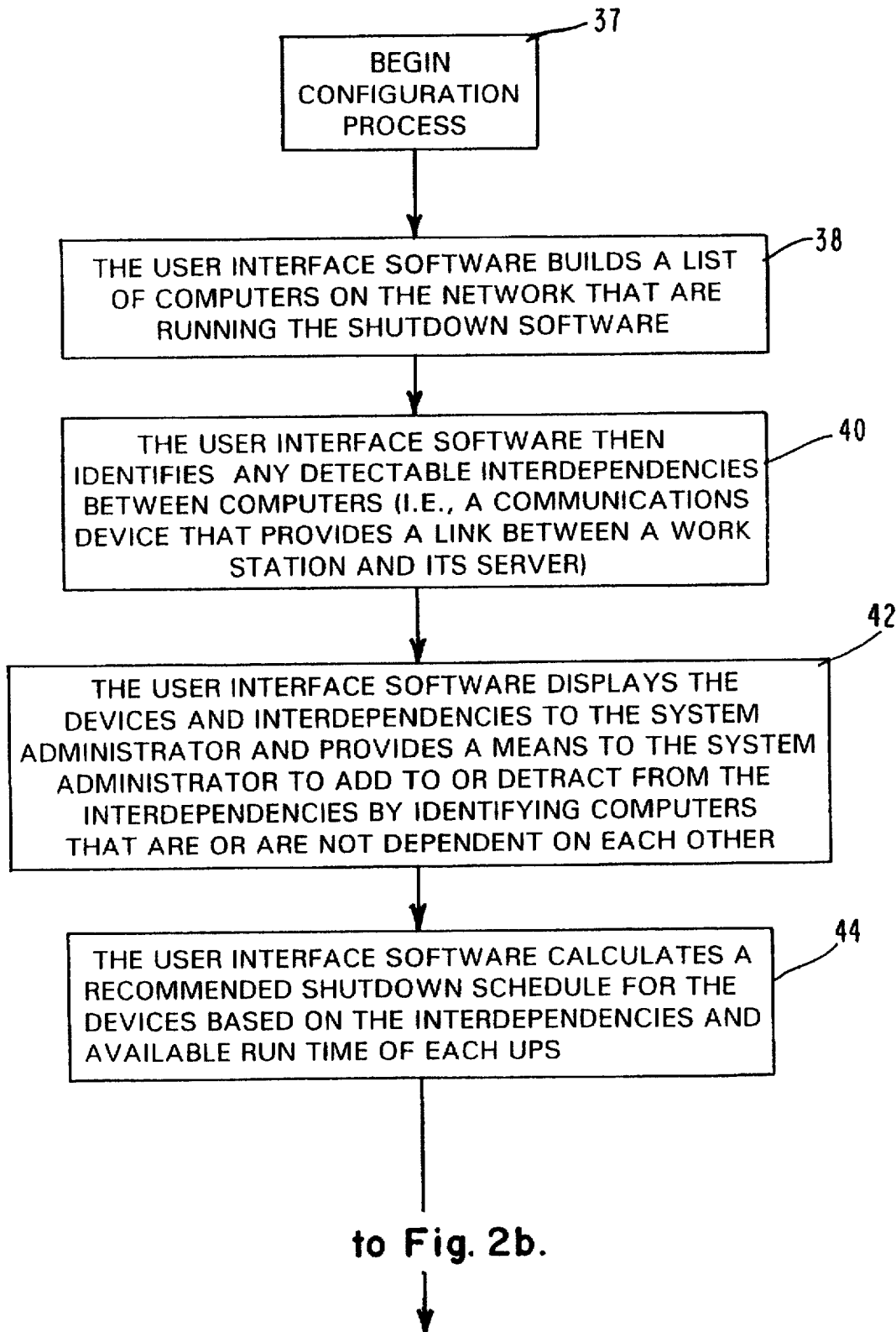
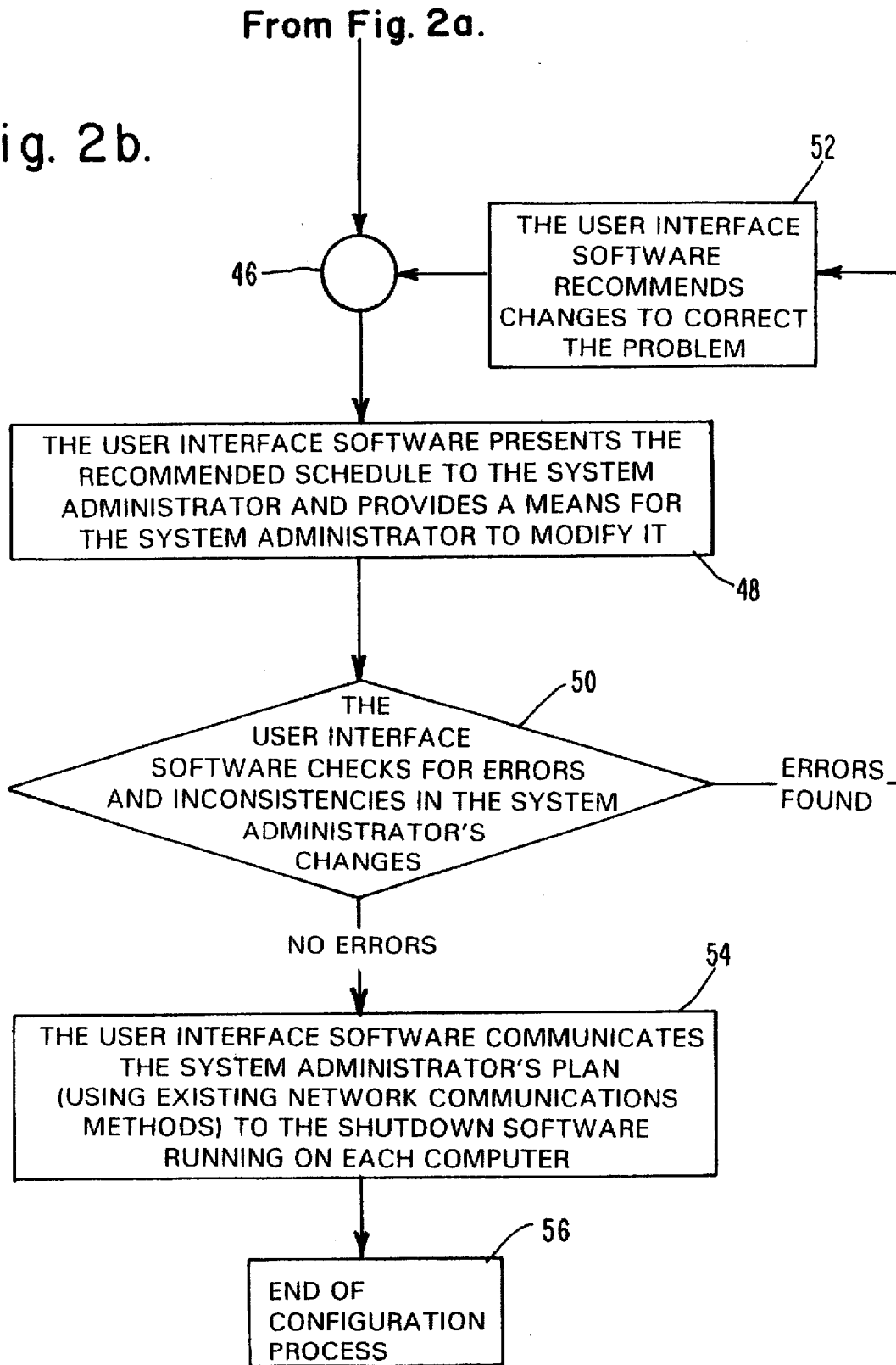


Fig. 2b.



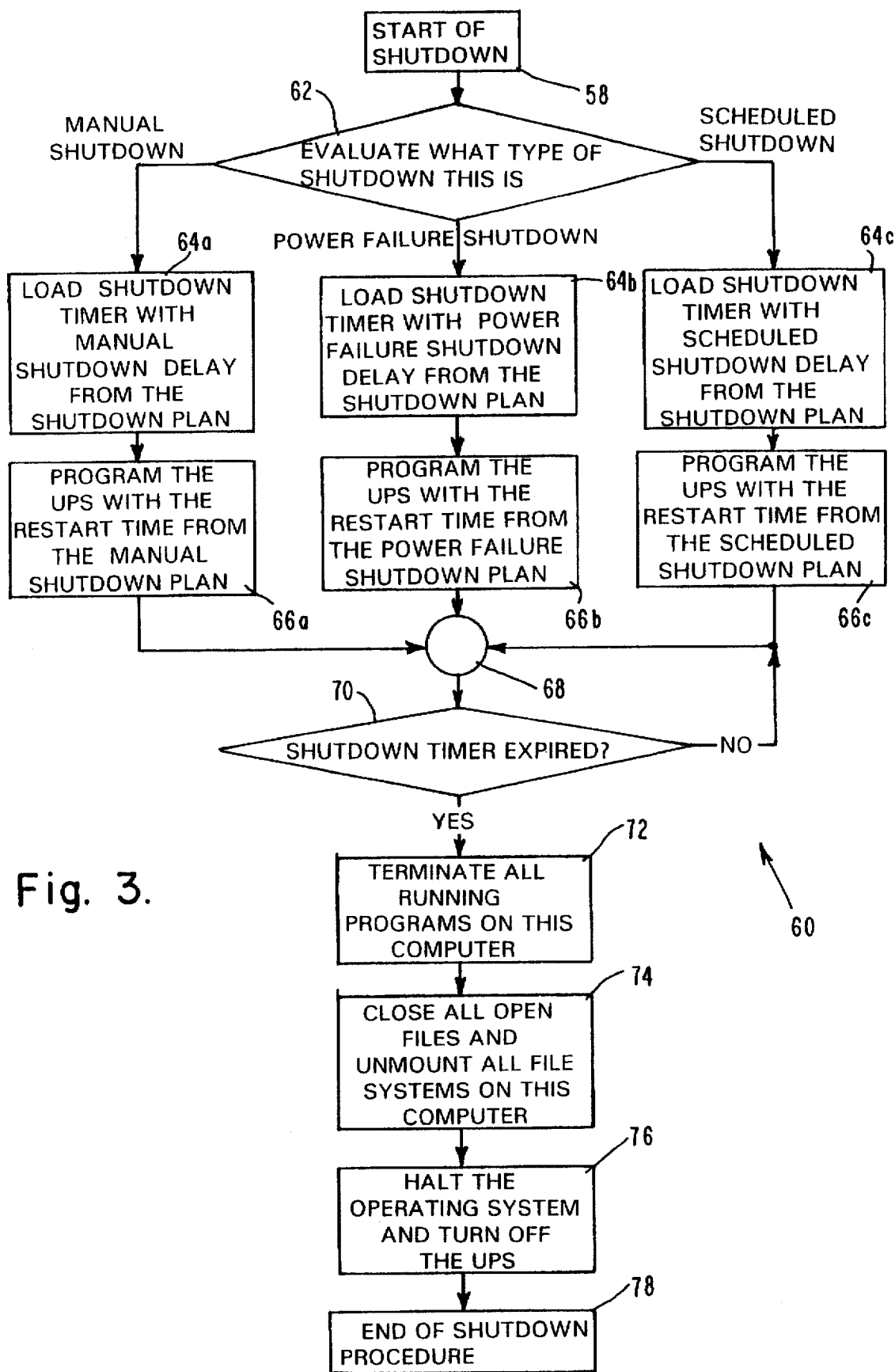


Fig. 3.

60

Explore Litigation Insights

Docket Alarm provides insights to develop a more informed litigation strategy and the peace of mind of knowing you're on top of things.

Real-Time Litigation Alerts



Keep your litigation team up-to-date with **real-time alerts** and advanced team management tools built for the enterprise, all while greatly reducing PACER spend.

Our comprehensive service means we can handle Federal, State, and Administrative courts across the country.

Advanced Docket Research



With over 230 million records, Docket Alarm's cloud-native docket research platform finds what other services can't. Coverage includes Federal, State, plus PTAB, TTAB, ITC and NLRB decisions, all in one place.

Identify arguments that have been successful in the past with full text, pinpoint searching. Link to case law cited within any court document via Fastcase.

Analytics At Your Fingertips



Learn what happened the last time a particular judge, opposing counsel or company faced cases similar to yours.

Advanced out-of-the-box PTAB and TTAB analytics are always at your fingertips.

API

Docket Alarm offers a powerful API (application programming interface) to developers that want to integrate case filings into their apps.

LAW FIRMS

Build custom dashboards for your attorneys and clients with live data direct from the court.

Automate many repetitive legal tasks like conflict checks, document management, and marketing.

FINANCIAL INSTITUTIONS

Litigation and bankruptcy checks for companies and debtors.

E-DISCOVERY AND LEGAL VENDORS

Sync your system to PACER to automate legal marketing.