



(12) **United States Patent**
Arrouye et al.

(10) **Patent No.:** **US 6,256,635 B1**
(45) **Date of Patent:** **Jul. 3, 2001**

(54) **METHOD AND APPARATUS FOR CONFIGURING A COMPUTER USING SCRIPTING**

(75) Inventors: **Yan Arrouye**, Cupertino; **John Comiskey**, San Jose; **Chris Nebel**, Sunnyvale; **Richard Ford**, Arlington; **Michel Guittet**, Redmond; **Alice Li**, Los Altos, all of CA (US)

(73) Assignee: **Apple Computer, Inc.**, Cupertino, CA (US)

(*) Notice: Subject to any disclaimer, the term of this patent is extended or adjusted under 35 U.S.C. 154(b) by 0 days.

(21) Appl. No.: **09/074,705**

(22) Filed: **May 8, 1998**

(51) **Int. Cl.**⁷ **G06F 17/30**

(52) **U.S. Cl.** **707/102; 707/10; 707/200; 709/220; 709/223; 713/1; 717/11**

(58) **Field of Search** **707/10, 102, 103, 707/200, 201; 709/220, 221, 223, 226; 713/1; 717/11**

(56) **References Cited**

U.S. PATENT DOCUMENTS

5,175,800	12/1992	Galis et al.	706/45
5,414,812	5/1995	Filip et al.	707/103
5,784,539	* 7/1998	Lenz	706/45
5,784,563	* 7/1998	Marshall et al.	709/221
5,838,907	* 11/1998	Hansen	709/220
5,931,909	* 8/1999	Taylor	709/221
6,029,196	* 2/2000	Lenz	709/221
6,066,182	* 5/2000	Wilde et al.	717/11
6,078,951	* 6/2000	Pashupathy et al.	709/217

FOREIGN PATENT DOCUMENTS

0791881	8/1997	(EP)
0803808	10/1997	(EP)

OTHER PUBLICATIONS

“AppleScript: Easy-to-learn Automation for Macintosh Systems,” a PDF printable version of 6-page document, downloaded on Jul. 11, 2000, at www.apple.com/apple-script/techsheet/AppleScript.00.html.*

“Process Manager for a Personal Computer” IBM Technical Disclosure Bulletin, US, IBM Corp. New York, vol. 30, No. 6, pp. 10-15 XP000035572 ISSN: 0018-8689 11/1987.

“Method for Updating Configuration Once” IBM Technical Disclosure Bulletin, US, IBM Corp. New York, vol. 38, No. 2, pp. 537-538 XP0000502680 ISSN: 0018-8689 2/1995.

* cited by examiner

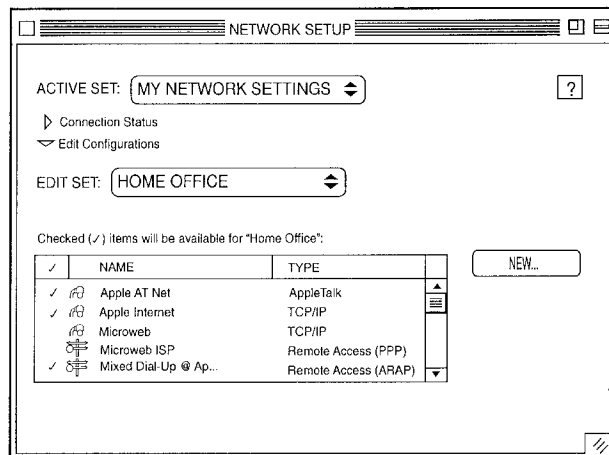
Primary Examiner—Hosain T. Alam

(74) *Attorney, Agent, or Firm*—The Hecker Law Group

(57) **ABSTRACT**

A method and apparatus for configuring a computer. One embodiment of the invention combines all of the prior art control panels related to networking into a consolidated Network Setup Control Panel. In addition, the invention provides for computer configuration by scripting. The configuration may be for a type of system setting or for network configurations and protocols. Through scripting, a computer may be configured locally or remotely on a network. One embodiment of the invention provides for a centralized database or Configuration Library consisting of collected data relating to available configuration settings. This database is not limited to configuration information and can be used as a general database containing information the user desires to store. To modify a configuration by scripting, the invention provides for a Scripting Interface consisting of a Scripting Server and Scripting Plug-In. The Scripting Server receives the script forwarded from a user or network administrator, parses the script and determines the appropriate Scripting Plug-In to forward the desired action to. The Scripting Plug-In receives the commands and executes the appropriate actions to modify the configuration as directed.

44 Claims, 11 Drawing Sheets



NETWORK SETUP CONTROL PANEL, MAIN WINDOW

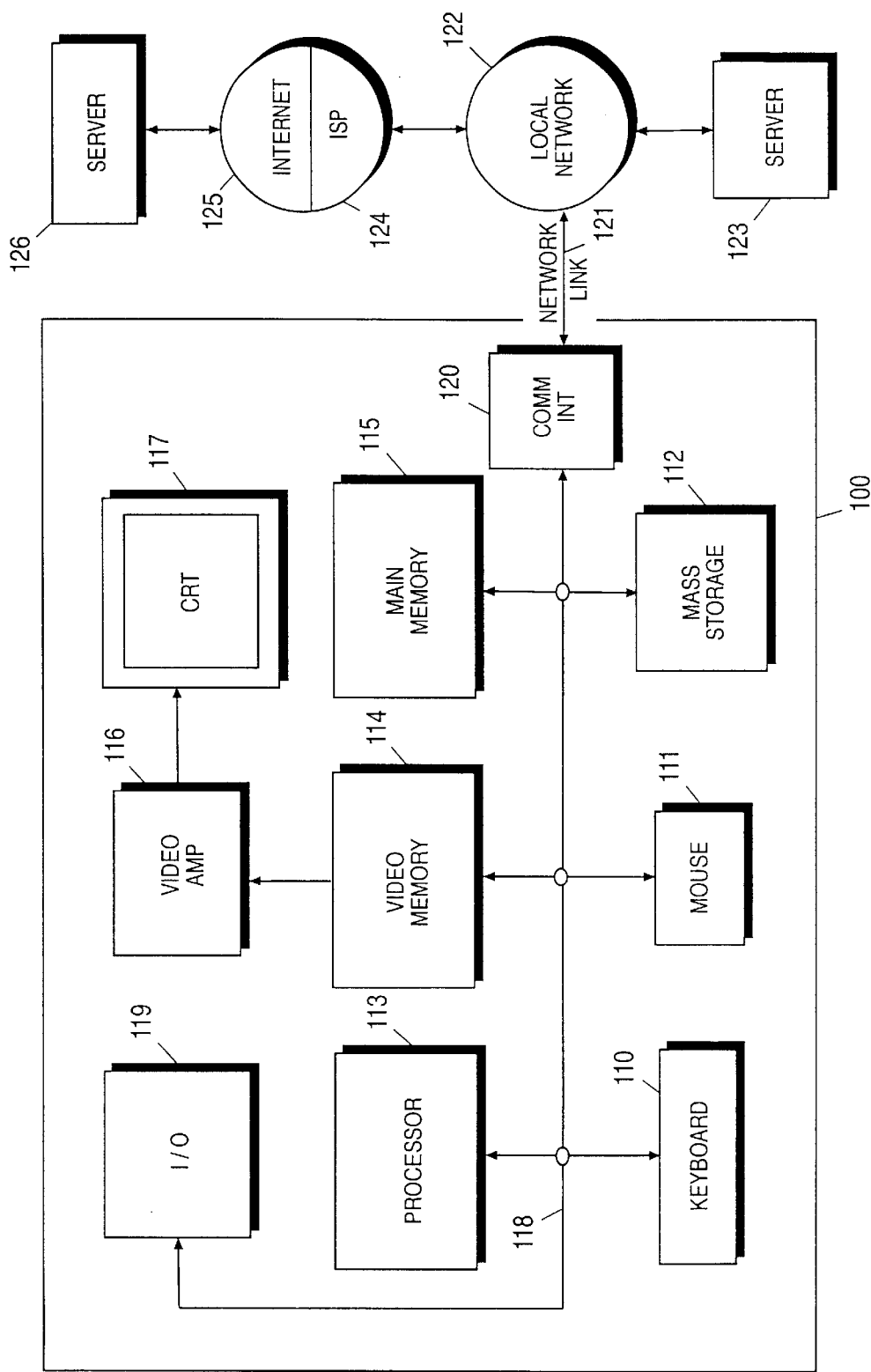


FIGURE 1

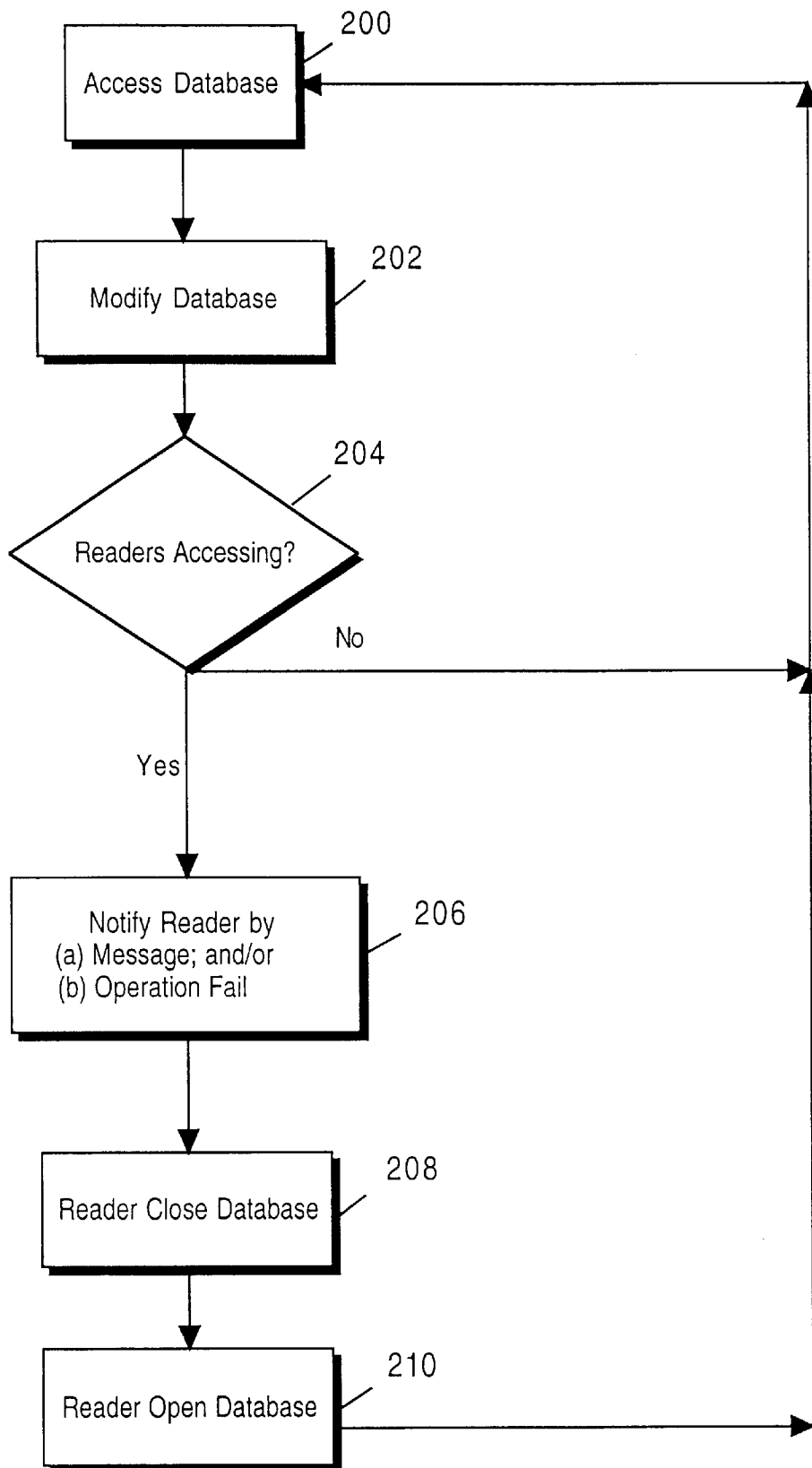


FIGURE 2

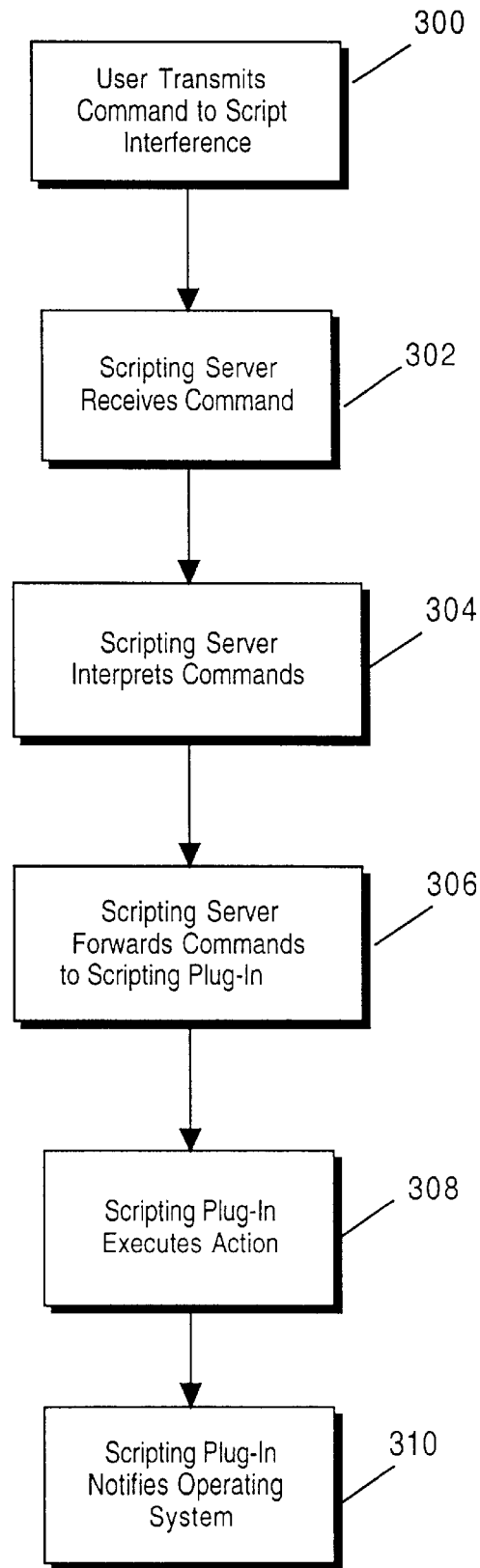


FIGURE 3

FIGURE 4A

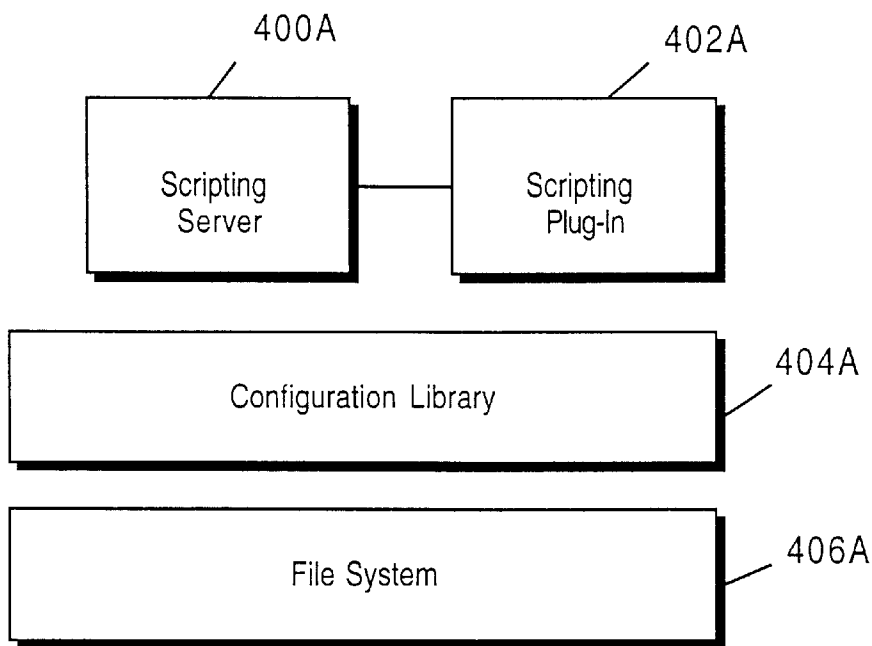
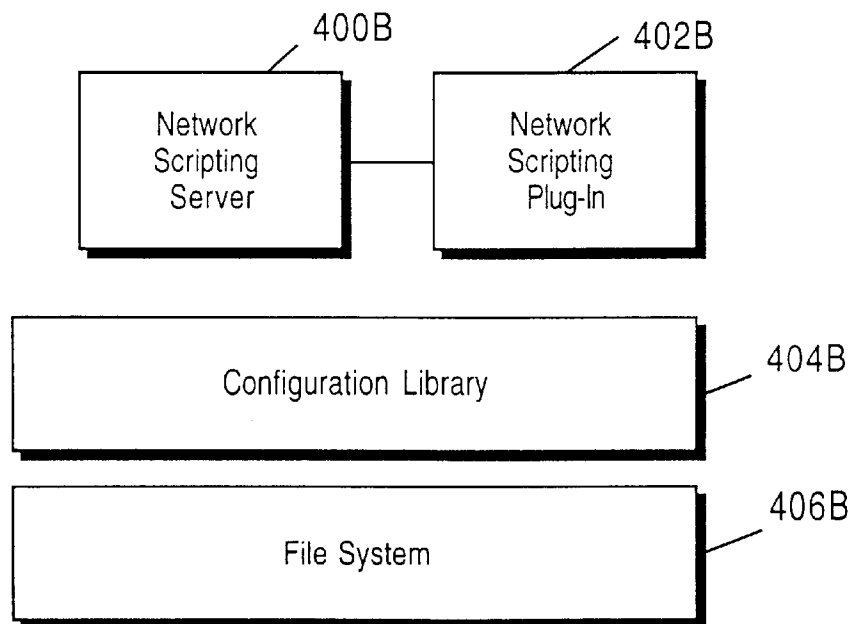


FIGURE 4B



Explore Litigation Insights

Docket Alarm provides insights to develop a more informed litigation strategy and the peace of mind of knowing you're on top of things.

Real-Time Litigation Alerts



Keep your litigation team up-to-date with **real-time alerts** and advanced team management tools built for the enterprise, all while greatly reducing PACER spend.

Our comprehensive service means we can handle Federal, State, and Administrative courts across the country.

Advanced Docket Research



With over 230 million records, Docket Alarm's cloud-native docket research platform finds what other services can't. Coverage includes Federal, State, plus PTAB, TTAB, ITC and NLRB decisions, all in one place.

Identify arguments that have been successful in the past with full text, pinpoint searching. Link to case law cited within any court document via Fastcase.

Analytics At Your Fingertips



Learn what happened the last time a particular judge, opposing counsel or company faced cases similar to yours.

Advanced out-of-the-box PTAB and TTAB analytics are always at your fingertips.

API

Docket Alarm offers a powerful API (application programming interface) to developers that want to integrate case filings into their apps.

LAW FIRMS

Build custom dashboards for your attorneys and clients with live data direct from the court.

Automate many repetitive legal tasks like conflict checks, document management, and marketing.

FINANCIAL INSTITUTIONS

Litigation and bankruptcy checks for companies and debtors.

E-DISCOVERY AND LEGAL VENDORS

Sync your system to PACER to automate legal marketing.