



United States Patent [19]

[11] Patent Number: **5,796,951**

Hamner et al.

[45] Date of Patent: **Aug. 18, 1998**

[54] **SYSTEM FOR DISPLAYING INFORMATION RELATING TO A COMPUTER NETWORK INCLUDING ASSOCIATION DEVICES WITH TASKS PERFORMABLE ON THOSE DEVICES**

5,483,631	1/1996	Nagai et al.	395/155
5,504,921	4/1996	Dev et al.	395/800
5,553,226	9/1996	Kiuchi et al.	395/161
5,604,892	2/1997	Nuttall et al.	395/500
5,611,050	3/1997	Theimer et al.	395/200.53

OTHER PUBLICATIONS

Anonymous. *User Interface Design to Hide Complexity in Dialogs*, IBM Technical Disclosure Bulletin, vol. 34, No. 9, Feb. 1992, pp. 234-236.

Primary Examiner—Richard L. Ellis
Attorney, Agent, or Firm—Blakely, Sokoloff, Taylor & Zafman

[75] Inventors: **John F. Hamner**, Pleasant Grove; **Sandra Janich**, Salt Lake City; **Jeffrey L. Despain**, Pleasant Grove; **Katherine D. Niemann**, Orem; **Brian D. Sevy**, Lehi, all of Utah; **Dzung D. Tran**, Beaverton; **Frank K. Welch**, Portland, both of Oreg.

[73] Assignee: **Intel Corporation**, Santa Clara, Calif.

[57] ABSTRACT

A computer-implemented method of managing a computer network including a plurality of devices is provided, wherein a plurality of network management tasks are performable upon the devices. Data is gathered about a present configuration of the network, including the types of devices in the network, the quantity of each type of device present in the network, the relationships between the devices, and the tasks performable upon each of the devices. The data is then stored in a database representing a network map. A display is generated corresponding to the network map using the data in the database. The display shows an association of the devices with the tasks performable on the devices using bitmap representations of the devices and tasks. The display may include hierarchical, schematic, or geographical representations of the devices on the network. The devices are organized into a plurality of groups. In response to a user input selecting a device or group, the tasks performable by that device or group are identified on the display. A user may initiate any one of the displayed tasks by applying a user input selecting that task.

[21] Appl. No.: **577,875**

[22] Filed: **Dec. 22, 1995**

[51] Int. Cl.⁶ **G06F 15/177**

[52] U.S. Cl. **395/200.53**

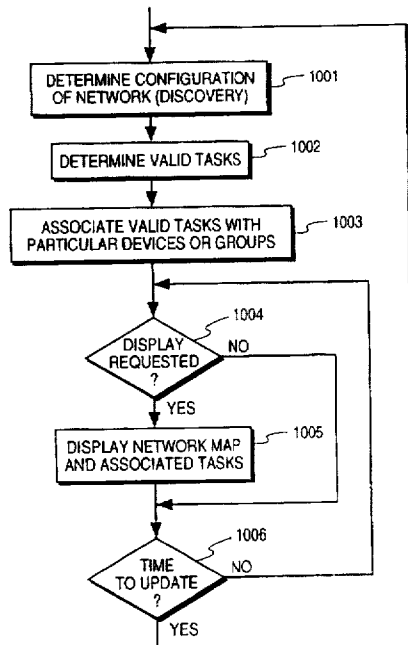
[58] Field of Search 395/200.53, 200.54, 395/200.55, 200.56, 911

[56] References Cited

U.S. PATENT DOCUMENTS

4,823,283	4/1989	Diehm et al.	395/352
4,864,492	9/1989	Blakely-Fogel et al.	395/54
5,261,044	11/1993	Dev et al.	395/200.53
5,335,323	8/1994	Kolnick	395/164
5,394,522	2/1995	Sanchez-Frank et al.	395/200.53
5,398,336	3/1995	Tantry et al.	395/600
5,414,812	5/1995	Filip et al.	395/200
5,428,730	6/1995	Baker et al.	395/154
5,434,791	7/1995	Koko et al.	364/468
5,452,415	9/1995	Hotka	395/161
5,471,399	11/1995	Tanaka et al.	364/491

39 Claims, 15 Drawing Sheets



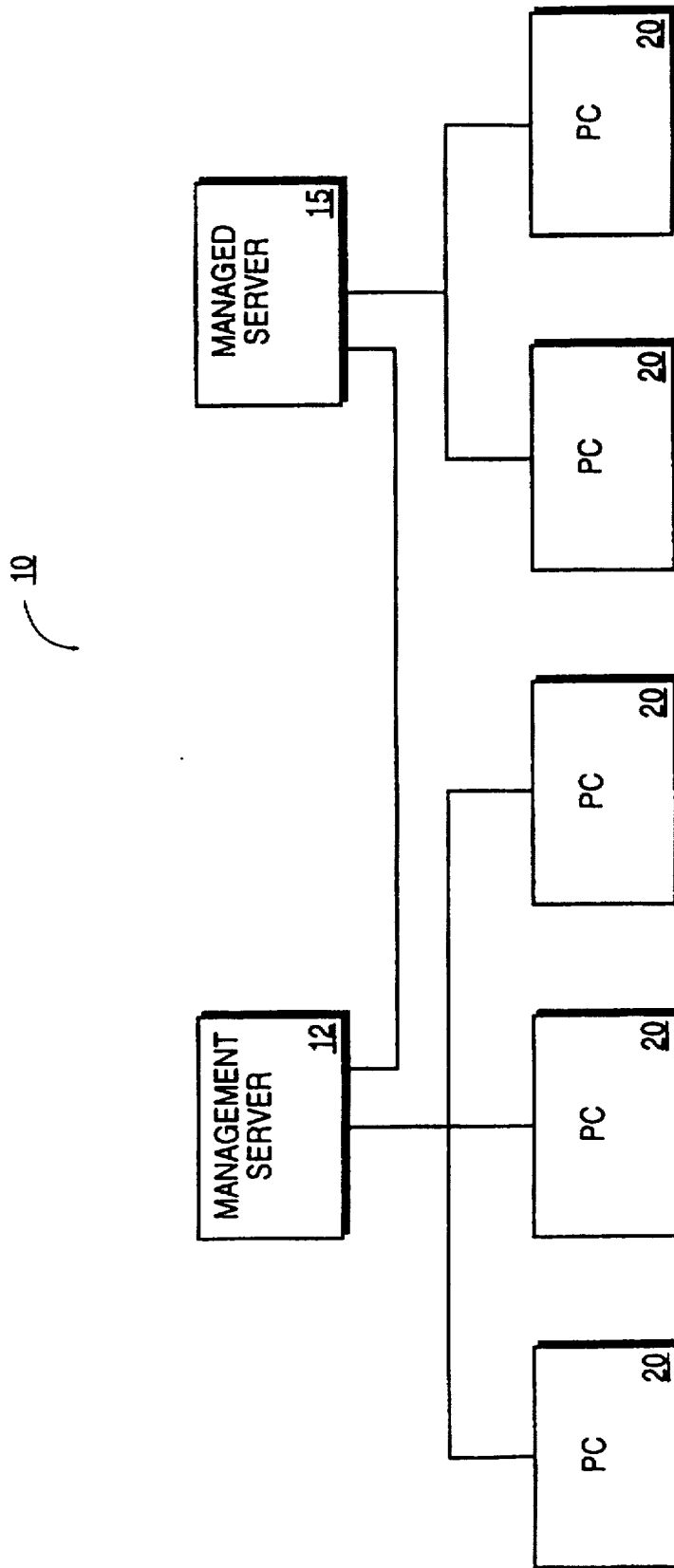


FIG. 1

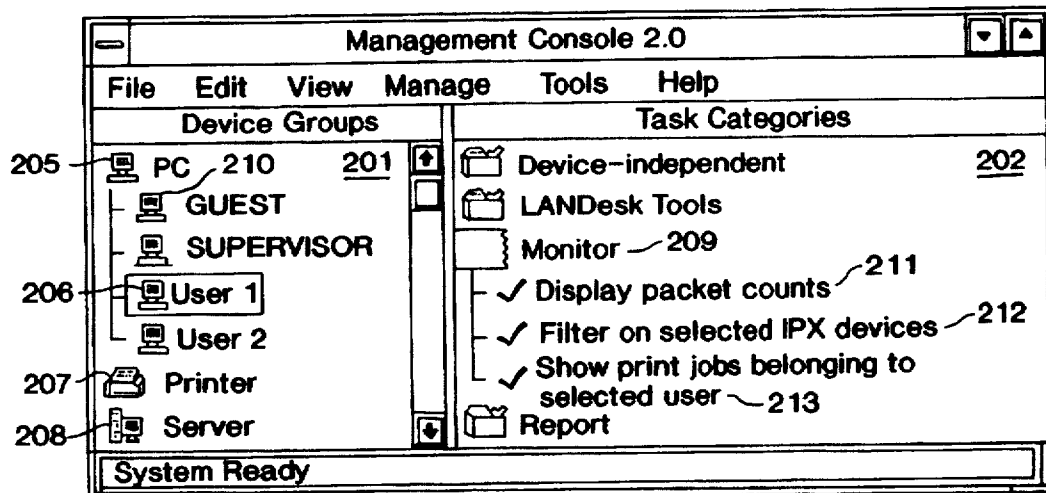
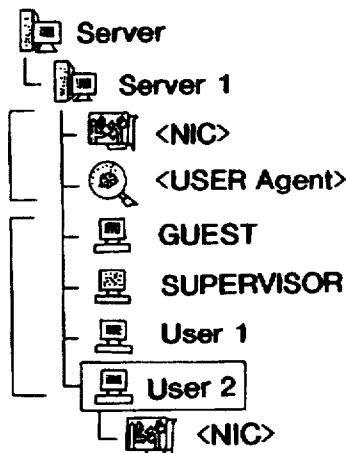


FIG. 2A

200

FIG. 2B



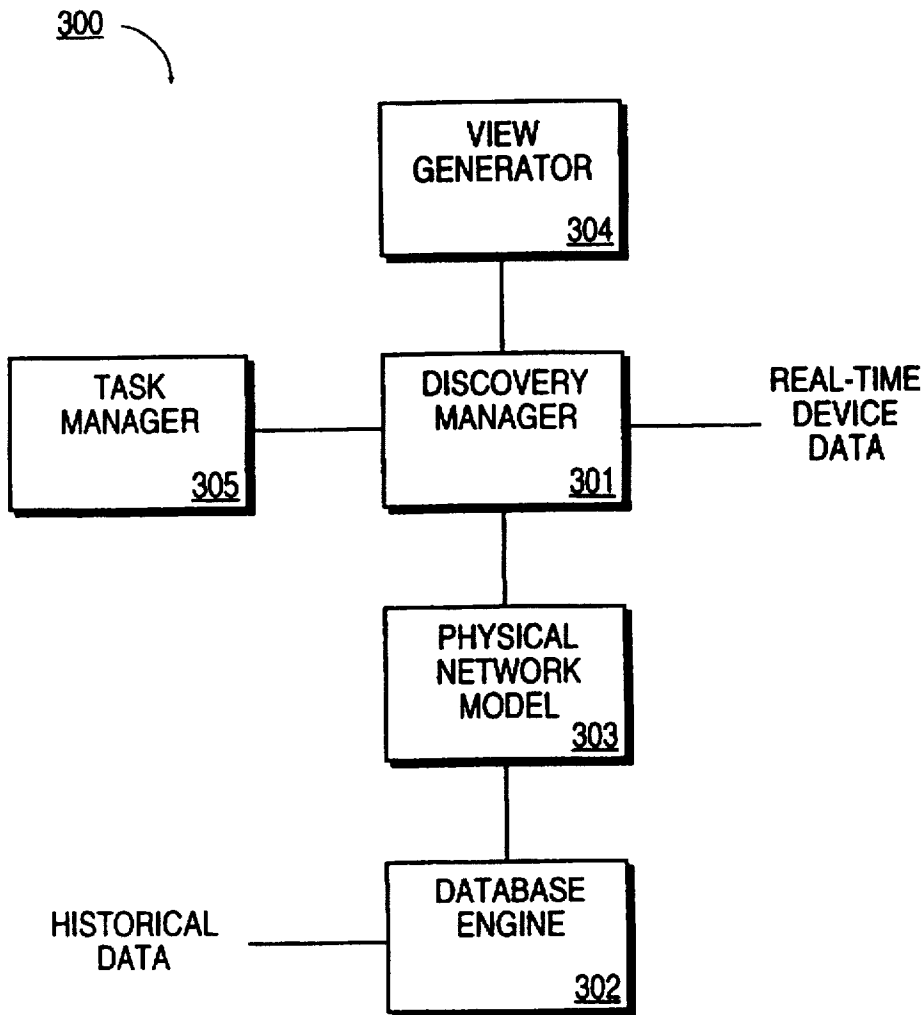


FIG. 3

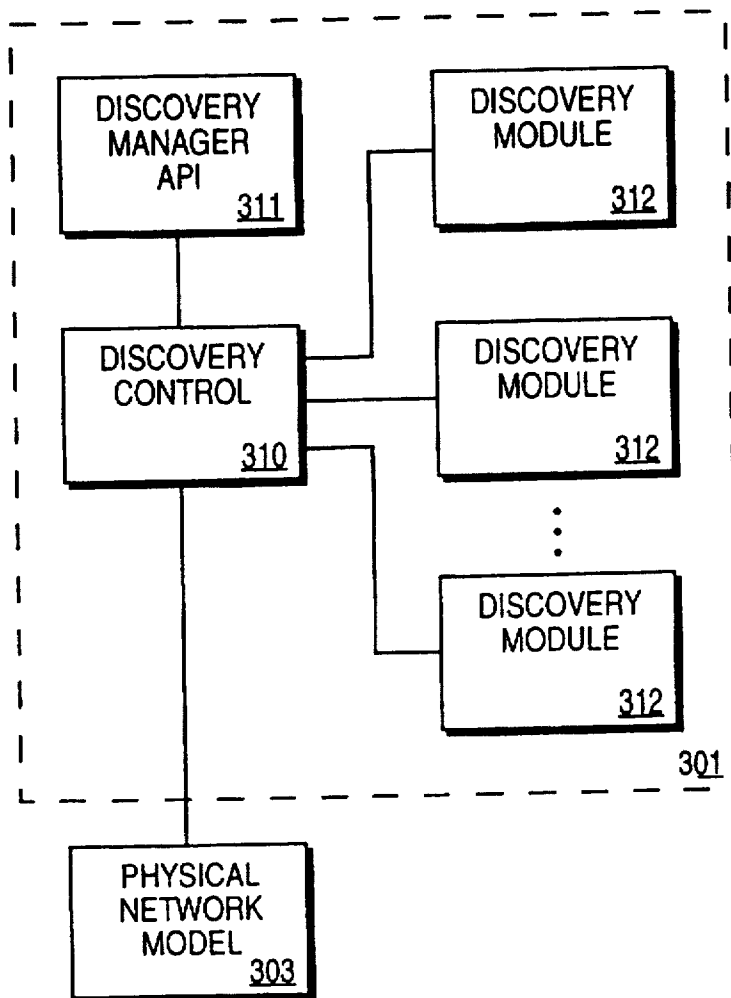


FIG. 4

Explore Litigation Insights

Docket Alarm provides insights to develop a more informed litigation strategy and the peace of mind of knowing you're on top of things.

Real-Time Litigation Alerts



Keep your litigation team up-to-date with **real-time alerts** and advanced team management tools built for the enterprise, all while greatly reducing PACER spend.

Our comprehensive service means we can handle Federal, State, and Administrative courts across the country.

Advanced Docket Research



With over 230 million records, Docket Alarm's cloud-native docket research platform finds what other services can't. Coverage includes Federal, State, plus PTAB, TTAB, ITC and NLRB decisions, all in one place.

Identify arguments that have been successful in the past with full text, pinpoint searching. Link to case law cited within any court document via Fastcase.

Analytics At Your Fingertips



Learn what happened the last time a particular judge, opposing counsel or company faced cases similar to yours.

Advanced out-of-the-box PTAB and TTAB analytics are always at your fingertips.

API

Docket Alarm offers a powerful API (application programming interface) to developers that want to integrate case filings into their apps.

LAW FIRMS

Build custom dashboards for your attorneys and clients with live data direct from the court.

Automate many repetitive legal tasks like conflict checks, document management, and marketing.

FINANCIAL INSTITUTIONS

Litigation and bankruptcy checks for companies and debtors.

E-DISCOVERY AND LEGAL VENDORS

Sync your system to PACER to automate legal marketing.