

[54] DEVICE FOR OPTICALLY MEASURING THE SHADING OF TRANSLUCENT PANES

[76] Inventor: Christian Beha, Fohrentalstrasse 6, D-7804 Glottertal, Fed. Rep. of Germany

[21] Appl. No.: 224,152

[22] Filed: Jul. 26, 1988

[51] Int. Cl.⁴ H01J 40/14

[52] U.S. Cl. 250/209; 356/222

[58] Field of Search 250/208, 209, 578; 356/244, 222, 224

[56] References Cited

U.S. PATENT DOCUMENTS

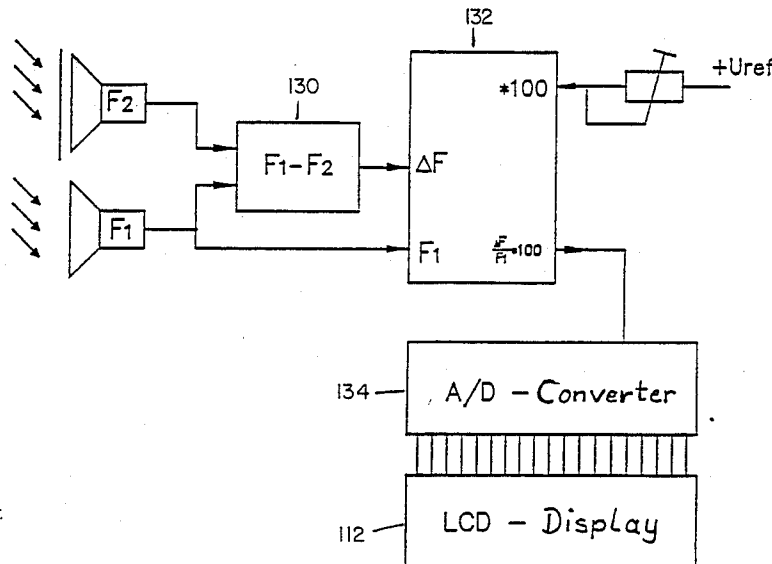
3,941,487	3/1976	Ehret et al.	356/244
3,989,948	11/1976	Allington	250/578
4,037,972	7/1977	Pross	356/206
4,236,826	12/1980	Yamanishi	356/432

Primary Examiner—David C. Nelms
Assistant Examiner—William L. Oen
Attorney, Agent, or Firm—Mason, Fenwick & Lawrence

[57] ABSTRACT

A device for measuring the shading of a translucent pane having an exterior side and an interior side comprising first and second photoelectric sensors for measuring unattenuated daylight, each of the sensors having a photosensitive surface and a spectral sensitivity substantially corresponding to the spectral sensitivity of the human eye and generating an output signal proportional to the intensity of the measured daylight, a first mounting element for mounting the first sensor on the exterior surface with the photosensitive surface of the first sensor facing away from the exterior surface, a second mounting element for mounting the second sensor on the interior surface with the photosensitive surface of the second sensor facing the interior surface, a housing, and an electronic circuit disposed in the housing and electrically connected to the first and second sensors for calculating the difference of the output signals of the first and second sensors, calculating the ratio of the difference to the signal from the first sensor, and displaying the ratio as a reference value.

14 Claims, 5 Drawing Sheets



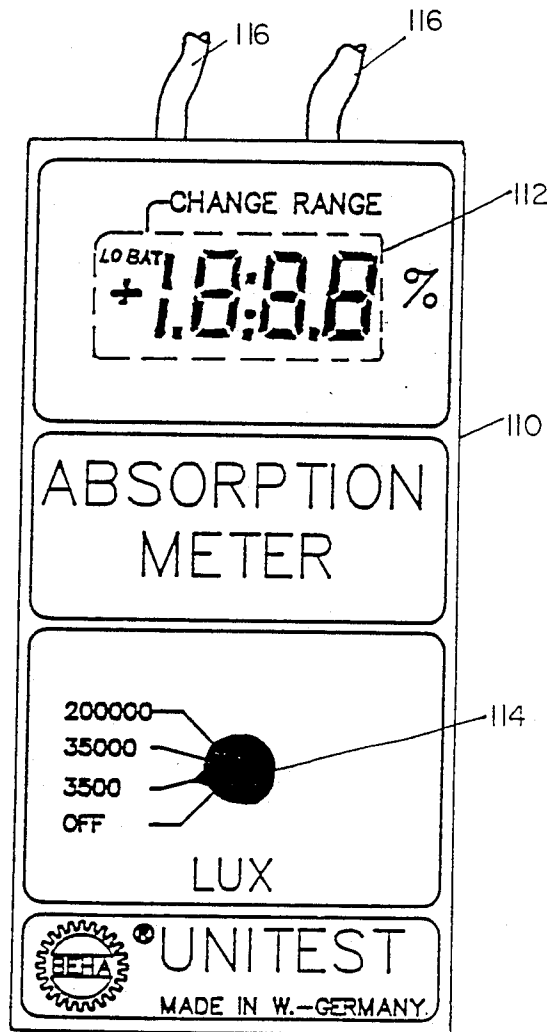


FIG. 1

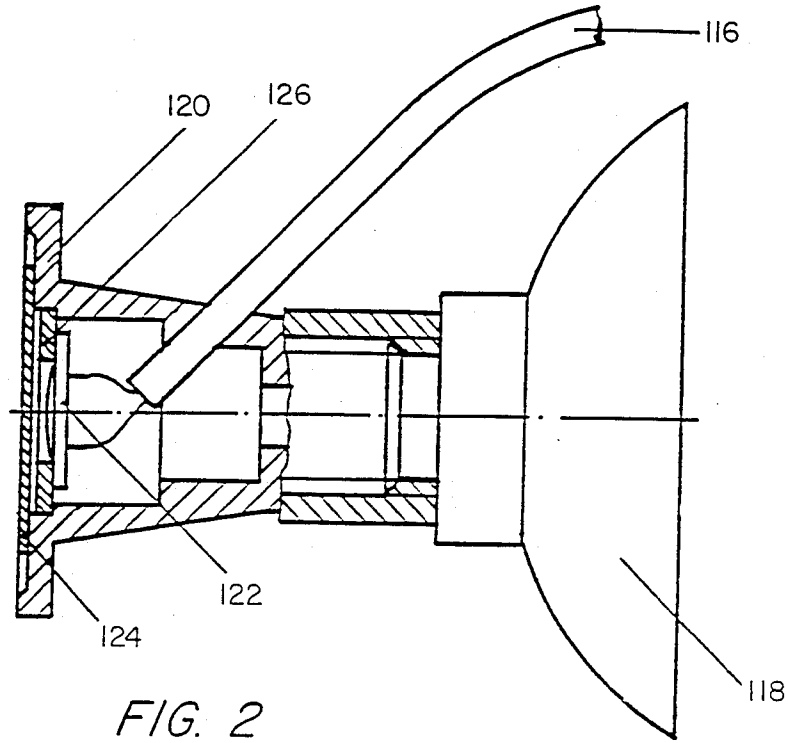


FIG. 2

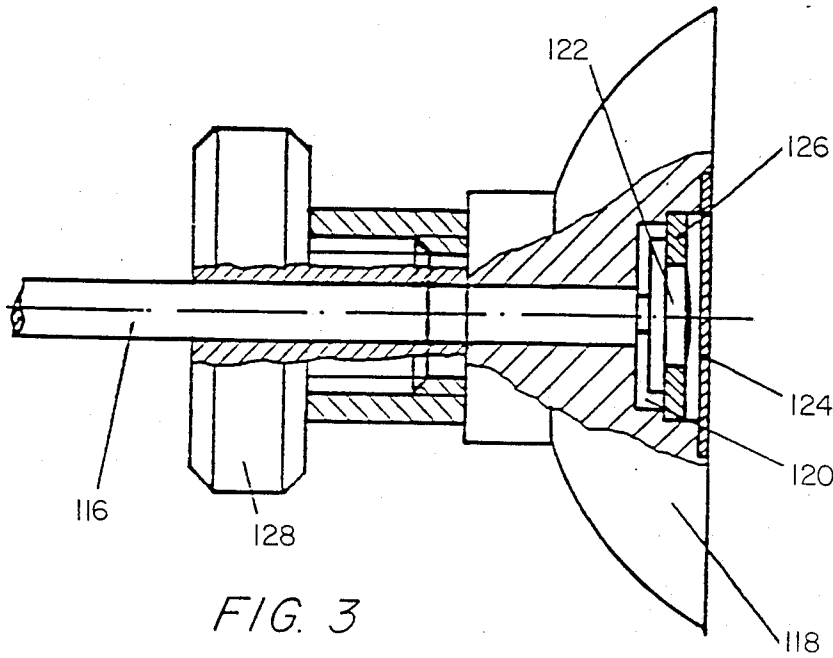


FIG. 3

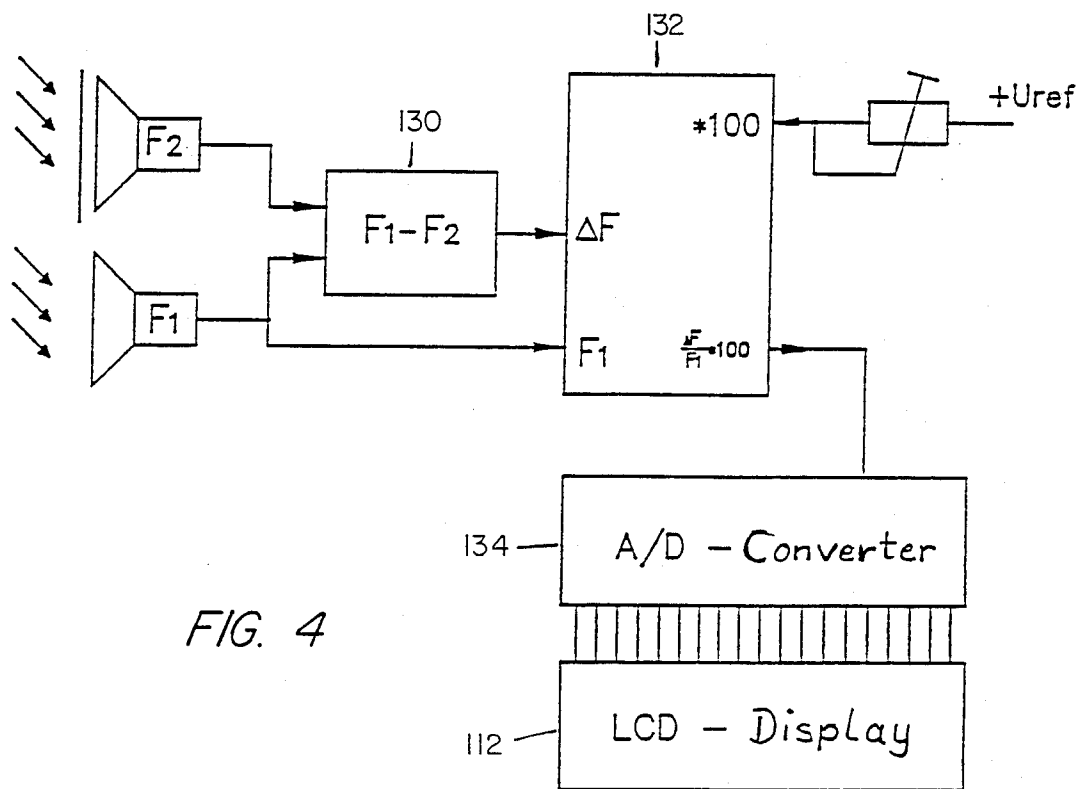


FIG. 4

FIG. 5

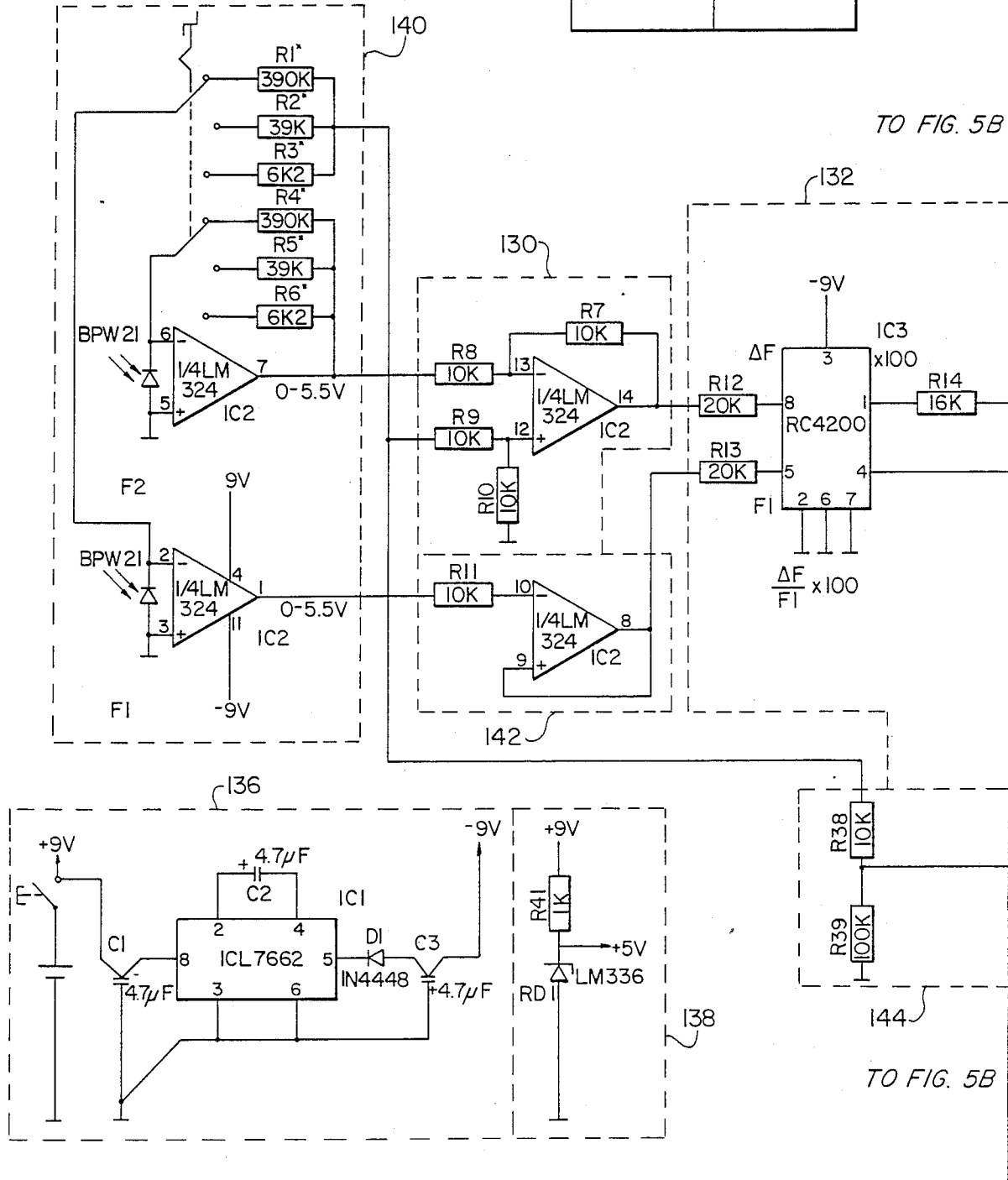
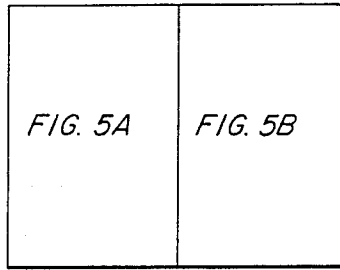


FIG. 5A

Explore Litigation Insights

Docket Alarm provides insights to develop a more informed litigation strategy and the peace of mind of knowing you're on top of things.

Real-Time Litigation Alerts



Keep your litigation team up-to-date with **real-time alerts** and advanced team management tools built for the enterprise, all while greatly reducing PACER spend.

Our comprehensive service means we can handle Federal, State, and Administrative courts across the country.

Advanced Docket Research



With over 230 million records, Docket Alarm's cloud-native docket research platform finds what other services can't. Coverage includes Federal, State, plus PTAB, TTAB, ITC and NLRB decisions, all in one place.

Identify arguments that have been successful in the past with full text, pinpoint searching. Link to case law cited within any court document via Fastcase.

Analytics At Your Fingertips



Learn what happened the last time a particular judge, opposing counsel or company faced cases similar to yours.

Advanced out-of-the-box PTAB and TTAB analytics are always at your fingertips.

API

Docket Alarm offers a powerful API (application programming interface) to developers that want to integrate case filings into their apps.

LAW FIRMS

Build custom dashboards for your attorneys and clients with live data direct from the court.

Automate many repetitive legal tasks like conflict checks, document management, and marketing.

FINANCIAL INSTITUTIONS

Litigation and bankruptcy checks for companies and debtors.

E-DISCOVERY AND LEGAL VENDORS

Sync your system to PACER to automate legal marketing.