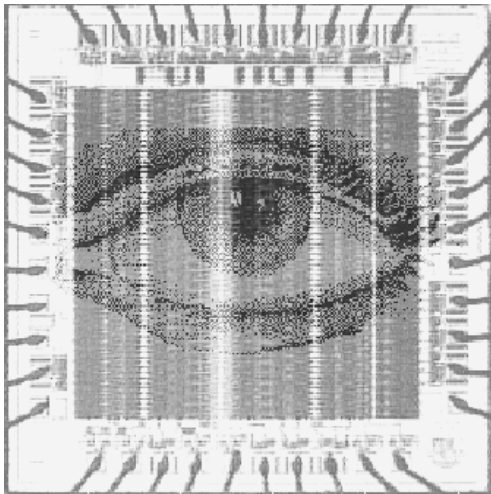


# ***Vision Chips or Seeing Silicon***

***Third Revision***

***Alireza Moini  
March 1997***



The Centre for High Performance  
Integrated Technologies and Systems

The University of Adelaide  
SA 5005, Australia

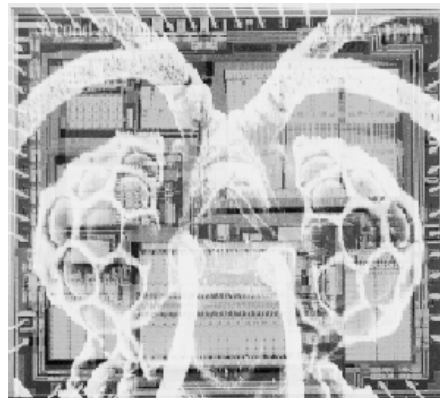
Tel: 61 8 8303 3403

Fax: 61 8 8303 4360

Email: [moini@eleceng.adelaide.edu.au](mailto:moini@eleceng.adelaide.edu.au)



Department of Electronics Engineering  
The University of Adelaide  
SA 5005, Australia



<http://www.eleceng.adelaide.edu.au/Groups/GAAS/Bugeye/visionchips/index.html>

Magna 2005

Revision 3.5  
Copyright ©1995-1997  
Alireza Moini  
All Rights Reserved

# Vision Chips or Seeing Silicon

Alireza Moini

The Centre for High Performance Integrated Technologies and Systems

Department of Electrical & Electronics Engineering

The Univ. of Adelaide, SA 5005, Australia

Tel: +61 8 8303 3403, Fax: +61 8 8303 4360

email: [moini@eleceng.adelaide.edu.au](mailto:moini@eleceng.adelaide.edu.au)

WWW: <http://www.eleceng.adelaide.edu.au/Personal/moini/>

March 1997

# Contents

<b>1</b>	<b>Introduction</b>	<b>5</b>
1.1	Smart sensors . . . . .	5
1.2	Advantages and disadvantages of vision chips . . . . .	6
1.3	Challenges . . . . .	7
1.4	Technology . . . . .	8
1.4.1	CMOS . . . . .	8
1.4.2	BiCMOS . . . . .	9
1.4.3	CCD and CMOS/CCD . . . . .	9
1.4.4	GaAs MESFET and HEMT . . . . .	10
1.5	Major groups working on vision chips . . . . .	10
1.6	How vision chips are presented in this report . . . . .	12
	<b>Acknowledgments</b>	<b>14</b>
<b>2</b>	<b>Spatial Vision Chips</b>	<b>16</b>
2.1	Introduction . . . . .	16
2.2	Mahowald and Mead's silicon retina . . . . .	18
2.3	Mead's adaptive retina . . . . .	19
2.4	Mahowald and Delbrück's stereo matching chips . . . . .	20
2.5	Bernard et al.'s Boolean artificial retina . . . . .	22
2.6	Andreou and Boahen's silicon retina . . . . .	23
2.7	Kobayashi et al.'s image Gaussian filter . . . . .	24
2.8	PASIC sensor from Linköping University . . . . .	26
2.9	MAPP2200 sensor from IVP . . . . .	28
2.10	Forchheimer-Åström's NSIP sensor . . . . .	28
2.11	Sandini et al.'s foveated CCD chip . . . . .	29
2.12	IMEC-IBIDEM's foveated CMOS chip . . . . .	31
2.13	Wodnicki et al.'s foveated CMOS sensor . . . . .	32
2.14	Standley's orientation detection chip . . . . .	33
2.15	Harris et al.'s Resistive Fuse Vision Chip . . . . .	35
2.16	DeWeerth's Localization and Centroid Computation Chip . . . . .	38
2.17	Ward & Syrzycki's Receptive Field Sensors . . . . .	40
2.18	Wu & Chiu's 2D Silicon Retina . . . . .	42
2.19	Nilson et al.'s Shunting Inhibition Vision Chip . . . . .	43
2.20	Keast & Sodini's CCD/CMOS Imager and Processor . . . . .	44
2.21	Mitsubishi Electric's CMOS Artificial Retina with VSP . . . . .	46
2.22	Venier et al.'s Solar Illumination Monitoring Chip . . . . .	47

<b>3</b>	<b>Spatio-Temporal Vision Chips</b>	<b>49</b>
3.1	Introduction . . . . .	49
3.2	Lyon's eye . . . . .	50
3.3	Tanner and Mead's correlating motion detection chip . . . . .	51
3.4	Tanner and Mead's optic flow motion detection chip . . . . .	53
3.5	Moore and Koch's multiplicative motion detector . . . . .	54
3.6	Bair and Koch's motion detection chip . . . . .	55
3.7	Delbrück's focusing chip . . . . .	56
3.8	Delbrück's velocity tuned motion sensor . . . . .	57
3.9	Meitzler et al.'s sampled-data motion chip . . . . .	59
3.10	Moini et al.'s insect vision-based motion detection chip . . . . .	60
3.11	Moini et al.'s second insect vision-based motion detection chip . . . . .	62
3.12	Dron's multi-scale veto CCD motion sensor . . . . .	65
3.13	Horiuchi et al.'s delay line-based motion detection chip . . . . .	66
3.14	Chong et al.'s change detector . . . . .	68
3.15	Gottardi and Yang's CCD/CMOS motion sensor . . . . .	69
3.16	Kramer et al.'s velocity sensor . . . . .	70
3.17	Indiveri et al.'s time-to-crash sensor . . . . .	72
3.18	Indiveri et al.'s direction-of-heading detector . . . . .	74
3.19	McQuirk's CCD focus of expansion estimation chip . . . . .	75
3.20	Gruss et al.'s range finder . . . . .	76
3.21	Sarpeshkar et al.'s pulse mode motion detector . . . . .	77
3.22	Meitzler et al.'s 2D position and motion detection chip . . . . .	79
3.23	Aizawa et al.'s Image Sensor with Compression . . . . .	80
3.24	Hamamoto et al.'s Image Sensor With Motion Adaptive Storage Time . . . . .	82
3.25	Simoni et al.'s Optical Sensor and Analog Memory Chip with Change Detection . . . . .	83
3.26	Espejo et al.'s Smart Pixel CNN . . . . .	84
3.27	Moini et al.'s Shunting Inhibition Vision Chip . . . . .	85
3.28	Etienne-Cummings et al.'s Motion Detector Chip . . . . .	86
3.29	CSEM's Motion Detector Chip for Pointing Devices . . . . .	88
<b>4</b>	<b>Chips for Vision</b>	<b>90</b>
4.1	Introduction . . . . .	90
4.2	Hakkaranien & Lee's AVD CCD Chip for Stereo Vision . . . . .	91
4.3	Erten's CMOS Chip for Stereo Correspondence . . . . .	93
<b>5</b>	<b>Optical Neuro Chips</b>	<b>95</b>
5.1	Mitsubishi Electric's Optical neurochip and retina . . . . .	95
5.2	Yu et al.'s optical neurochip . . . . .	97
<b>6</b>	<b>Active Pixel Sensors</b>	<b>99</b>
6.1	Introduction . . . . .	99
6.2	JPL's active pixel sensors . . . . .	99
6.3	Technion's Adaptive Sensitivity CCD Imager . . . . .	100
6.4	Technion's TDI CCD sensor . . . . .	101
6.5	Fowler et al.'s pixel level ADC sensor . . . . .	102

# Explore Litigation Insights

Docket Alarm provides insights to develop a more informed litigation strategy and the peace of mind of knowing you're on top of things.

## Real-Time Litigation Alerts



Keep your litigation team up-to-date with **real-time alerts** and advanced team management tools built for the enterprise, all while greatly reducing PACER spend.

Our comprehensive service means we can handle Federal, State, and Administrative courts across the country.

## Advanced Docket Research



With over 230 million records, Docket Alarm's cloud-native docket research platform finds what other services can't. Coverage includes Federal, State, plus PTAB, TTAB, ITC and NLRB decisions, all in one place.

Identify arguments that have been successful in the past with full text, pinpoint searching. Link to case law cited within any court document via Fastcase.

## Analytics At Your Fingertips



Learn what happened the last time a particular judge, opposing counsel or company faced cases similar to yours.

Advanced out-of-the-box PTAB and TTAB analytics are always at your fingertips.

## API

Docket Alarm offers a powerful API (application programming interface) to developers that want to integrate case filings into their apps.

## LAW FIRMS

Build custom dashboards for your attorneys and clients with live data direct from the court.

Automate many repetitive legal tasks like conflict checks, document management, and marketing.

## FINANCIAL INSTITUTIONS

Litigation and bankruptcy checks for companies and debtors.

## E-DISCOVERY AND LEGAL VENDORS

Sync your system to PACER to automate legal marketing.